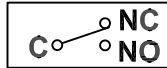


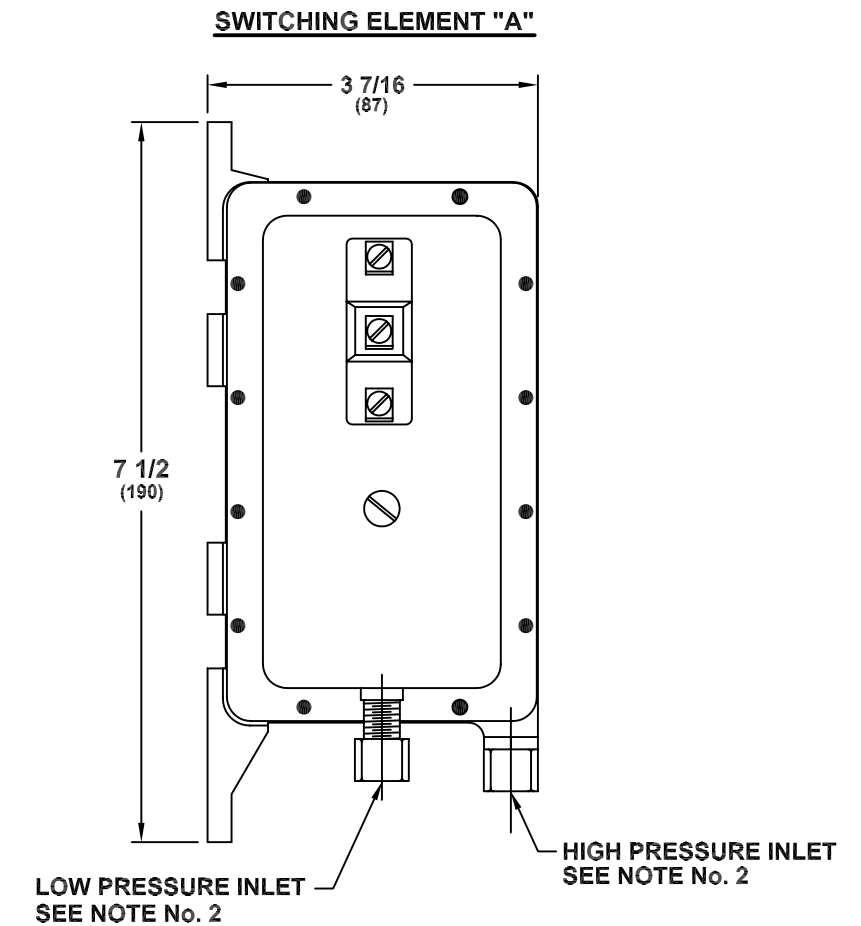
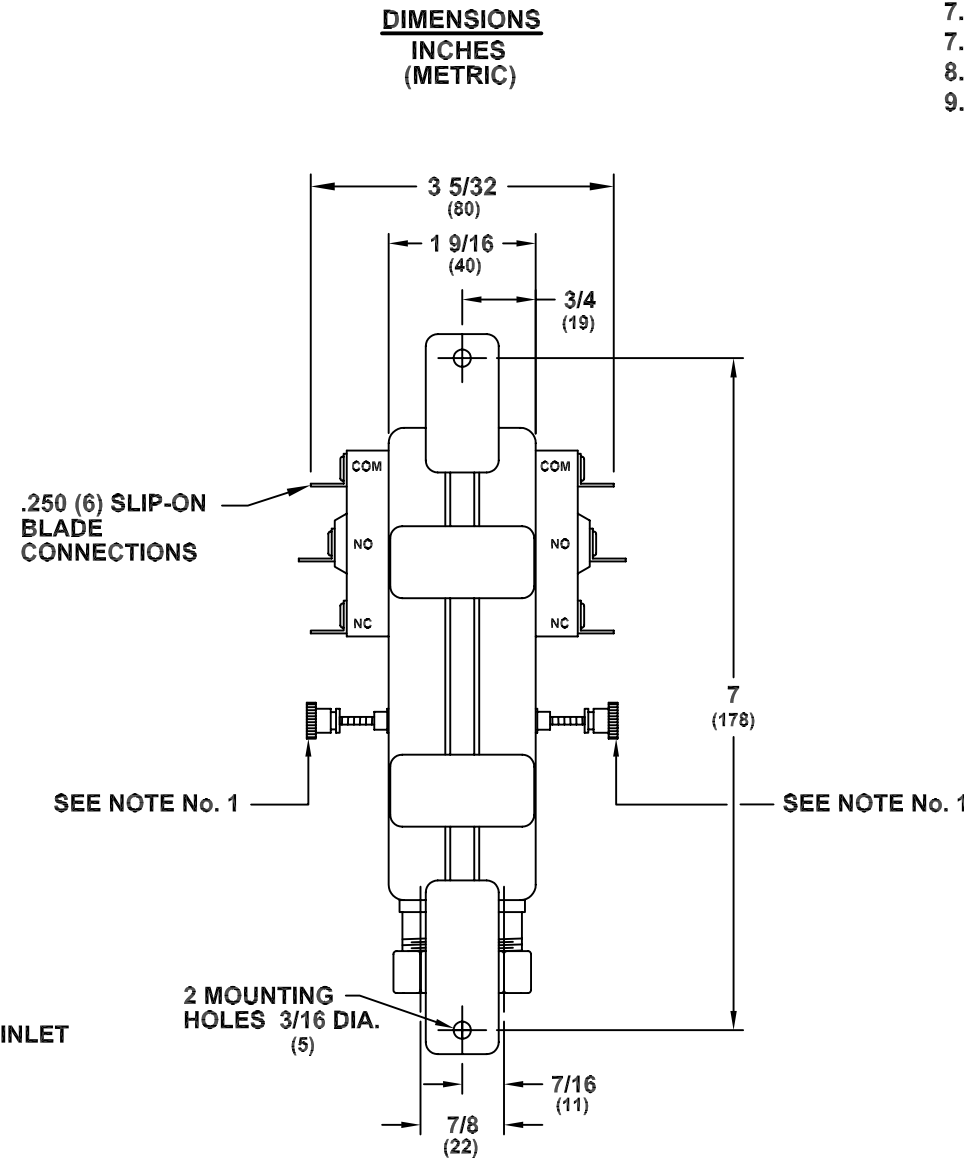
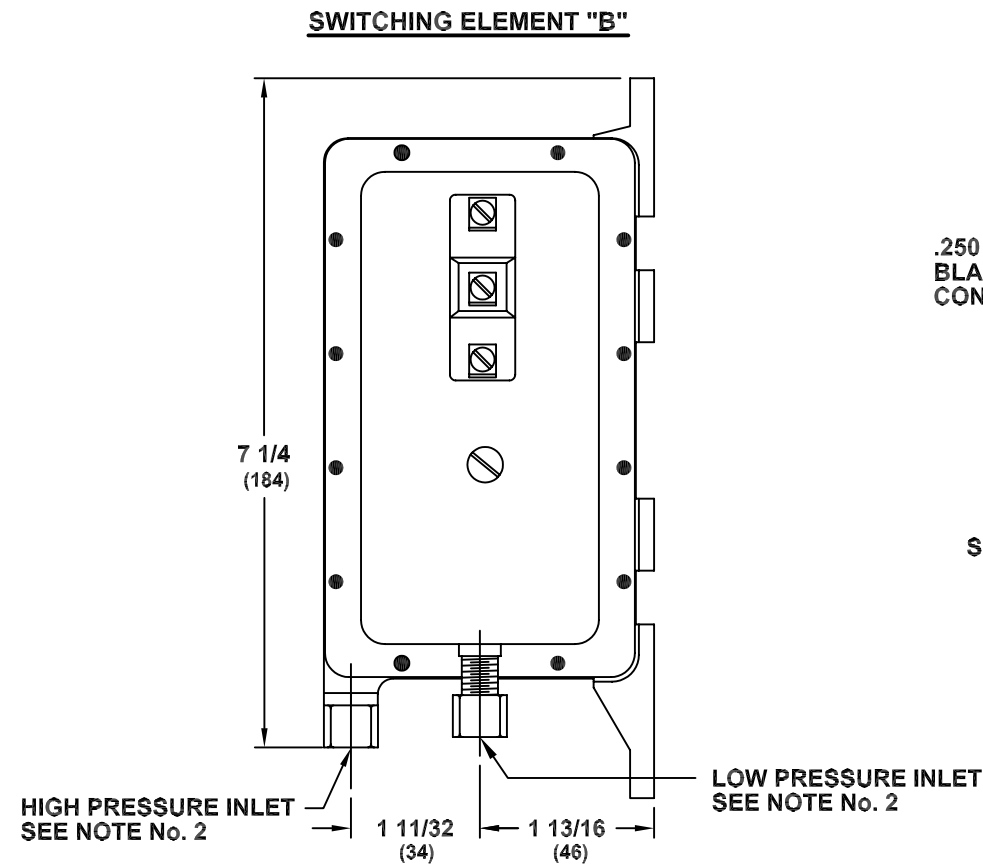
SPECIFICATIONS: SWITCHING ELEMENT "B"

- 1.0 Mounting Position: Diaphragm Vertical (See Diagram Below).
- 2.0 Set Point (Sealed): Factory Set @ 0.15" +.00" / -.10" w.c. Pressure Fall Vertical Plane.
- 2.1 Field Adjustable: "Operate Range" .05" w.c. to 2.0" w.c.
- 2.2 Field Adjustable: "Release Range" .04" w.c. to 1.9" w.c.
- 3.0 Approximate Switching Differential: Progressive; Increasing From .02 ± .01" w.c. at Minimum Set Point To Approximately .1" w.c. At Maximum Set Point.
- 4.0 Measured Media: Air
- 5.0 Operating Temperature Range: -40° to 176° F (-40.0° C to 80.0° C).
- 6.0 Life: 100,000 Cycles Minimum At ½ PSI Maximum Pressure Each Cycle And At Maximum Electrical Load.
- 7.0 Electrical Rating
- 7.1 300 Va Pilot Duty At 115 to 277 Vac
- 7.2 15a Non-inductive to 277 Vac
- 8.0 Contact Arrangement: SPDT
- 9.0 Position Of Switch Contacts Before Pressure Is Applied:



SPECIFICATIONS: SWITCHING ELEMENT "A"

- 1.0 Mounting Position: Diaphragm Vertical (See Diagram Below).
- 2.0 Set Point (Sealed): Factory Set @ 0.65" +.10" / -.00" w.c. Pressure Rise Vertical Plane.
- 2.1 Field Adjustable: "Operate Range" .05" w.c. to 2.0" w.c.
- 2.2 Field Adjustable: "Release Range" .04" w.c. to 1.9" w.c.
- 3.0 Approximate Switching Differential: Progressive; Increasing From .02 ± .01" w.c. at Minimum Set Point To Approximately .1" w.c. At Maximum Set Point.
- 4.0 Measured Media: Air
- 5.0 Operating Temperature Range: -40° to 176° F (-40.0° C to 80.0° C).
- 6.0 Life: 100,000 Cycles Minimum At ½ PSI Maximum Pressure Each Cycle And At Maximum Electrical Load.
- 7.0 Electrical Rating
- 7.1 300 Va Pilot Duty At 115 to 277 Vac
- 7.2 15a Non-inductive to 277 Vac
- 8.0 Contact Arrangement: SPDT
- 9.0 Position Of Switch Contacts Before Pressure Is Applied:



NOTES:

1. External Adjustment Screw - Sealed
2. Sample Line Connectors, (1) High Pressure and (2) Low Pressure, Complete With Nut and Ferrule Will Accept 1/4" OD Tubing ie Copper, Aluminum or Plastic.
3. Approval or Recognition By: U.L. File MH6213; and C.S.A. File LR18754.

SENSING SWITCH SPECIFICATIONS				
CAPTIVE AIR				
B	3117	08/17/04	MJA	FL
A	2945	01/06/04	RW	FL
REV	DCN No.	DATE	BY	CHKD
DRAWING RELEASE No. 2760				
DWN	DATE	CHKD	Cleveland Controls Division of UniControl Inc.	
RW	05/21/02	FL	1111 Brookpark Rd. Cleveland, Ohio 44109-5825	
CHKD	DATE	SCALE	USED ON	
FL	05/21/02	NONE	SHEET 1 OF 1	
.XX = ±.015 .XXX = ±.005 ANGLES = 90°			B20741-177	
				B
				REV