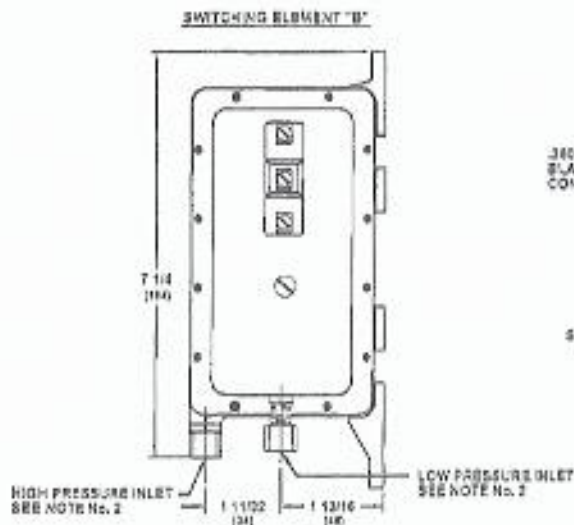
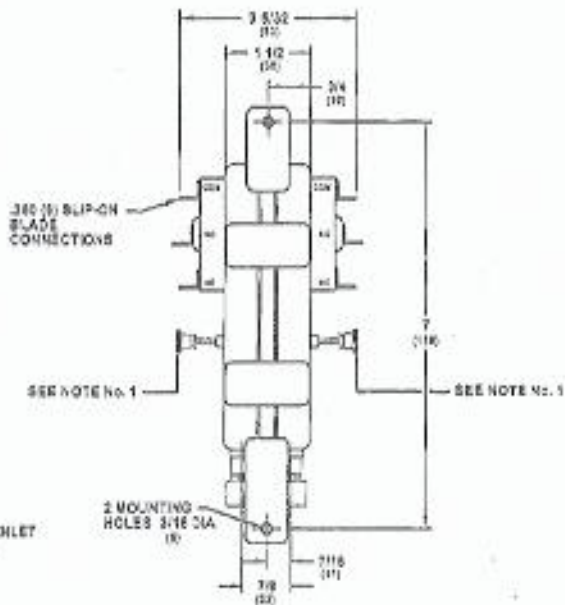


**SPECIFICATIONS: SWITCHING ELEMENT "B"**

- 1.0 Mounting Position: Diaphragm Vertical (See Diagram Below).
- 2.0 Set Point (Sealed): Factory Set @  $.15" \pm .01" / \pm .10" \text{ w.c. Pressure Fall Vertical Plane}$ .
- 2.1 Field Adjustable: "Operate Range"  $.05" \text{ w.c. to } 2.0" \text{ w.c.}$
- 2.2 Field Adjustable: "Release Range"  $.04" \text{ w.c. to } 1.5" \text{ w.c.}$
- 3.0 Approximate Switching Differential: Progressive; increasing From  $.02 \pm .01" \text{ w.c.}$  at Minimum Set Point To Approximately  $.3" \text{ w.c.}$  At Maximum Set Point.
- 4.0 Measured Media: Air
- 5.0 Operating Temperature Range:  $-40^\circ \text{ to } 175^\circ \text{ F}$  [ $-40.0^\circ \text{ C to } 80.0^\circ \text{ C}$ ].
- 6.0 Life: 100,000 Cycles Minimum At  $\frac{1}{2}$  PSI Maximum Pressure Each Cycle And At Maximum Electrical Load.
- 7.0 Electrical Rating
- 7.1 300 Va Pilot Duty At 115 to 277 Vac
- 7.2 15a Non-inductive to 277 Vac
- 8.0 Contact Arrangement: SPDT
- 9.0 Position Of Switch Contacts Before Pressure is Applied:

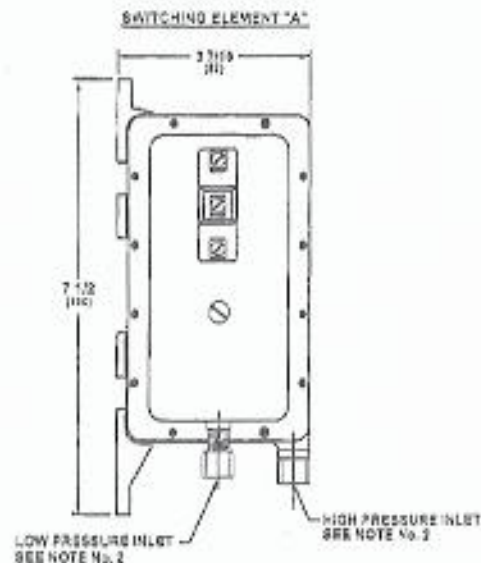


**DIMENSIONS  
INCHES  
(METRIC)**



**SPECIFICATIONS: SWITCHING ELEMENT "A"**

- 1.0 Mounting Position: Diaphragm Vertical (See Diagram Below).
- 2.0 Set Point (Sealed): Factory Set @  $0.80" \pm .10" / \pm .00" \text{ w.c. Pressure Fall Vertical Plane}$ .
- 2.1 Field Adjustable: "Operate Range"  $.05" \text{ w.c. to } 2.0" \text{ w.c.}$
- 2.2 Field Adjustable: "Release Range"  $.04" \text{ w.c. to } 1.5" \text{ w.c.}$
- 3.0 Approximate Switching Differential: Progressive; increasing From  $.02 \pm .01" \text{ w.c.}$  at Minimum Set Point To Approximately  $.3" \text{ w.c.}$  At Maximum Set Point.
- 4.0 Measured Media: Air
- 5.0 Operating Temperature Range:  $-40^\circ \text{ to } 175^\circ \text{ F}$  [ $-40.0^\circ \text{ C to } 80.0^\circ \text{ C}$ ].
- 6.0 Life: 100,000 Cycles Minimum At  $\frac{1}{2}$  PSI Maximum Pressure Each Cycle And At Maximum Electrical Load.
- 7.0 Electrical Rating
- 7.1 300 Va Pilot Duty At 115 to 277 Vac
- 7.2 15a Non-inductive to 277 Vac
- 8.0 Contact Arrangement: SPDT
- 9.0 Position Of Switch Contacts Before Pressure is Applied:



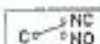
**NOTES:**

- 1. External Adjustment Screw - Sealed
- 2. Sample Line Connectors, (1) High Pressure and (2) Low Pressure. Complete With Nut and Female W/it Accept 1/4" OD Tubing in Copper, Aluminum or Plastic.
- 3. Approval or Recognition By: U.L. File M95213; and C.S.A. File LR13754.

SENSING SWITCH SPECIFICATIONS				
CAPTIVE AIR				
CLEVELAND CONTROLS MODEL: DDP-106-256				
REV	DATE	BY	CHKD	USED ON
1	21 2 54			
CHKD	DATE	SCALE	NOTE	

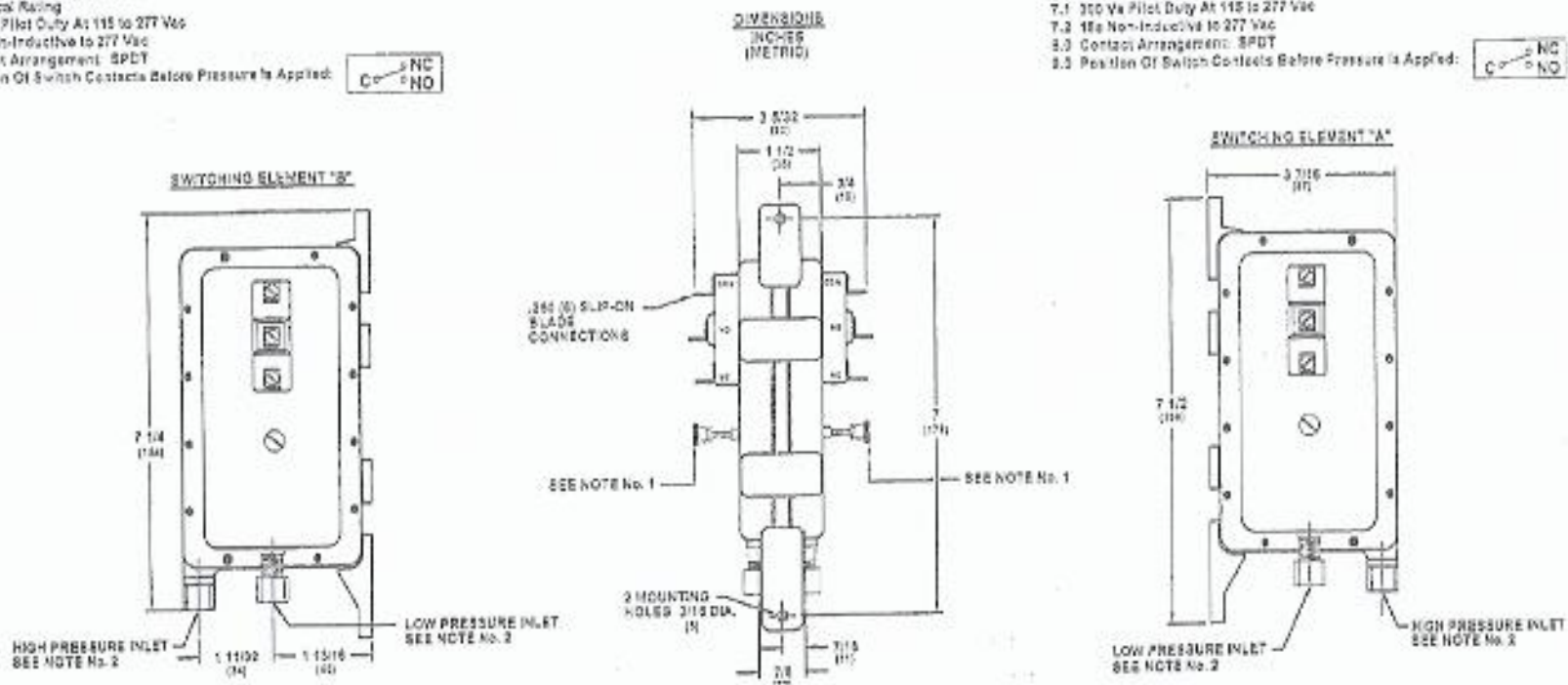
**SPECIFICATIONS: SWITCHING ELEMENT "B"**

- 1.0 Mounting Position: Diaphragm Vertical (See Diagram Below).
- 2.0 Set Point (Sealed): Factory Set @ 0.15" ±.00" i.e. 10" w.c. Pressure Fall Vertical Plane.
- 2.1 Field Adjustable: "Operate Range" .05" w.c. to 2.2" w.c.
- 2.2 Field Adjustable: "Release Range" .04" w.c. to 1.9" w.c.
- 3.0 Approximate Switching Differential: Progressive; Increasing From .02 ±.01" w.c. at Minimum Set Point To Approximately .1" w.c. At Maximum Set Point.
- 4.0 Measured Media: Air
- 5.0 Operating Temperature Range: -40° to 175° F (-40.0° C to 80.0° C).
- 6.0 Life: 100,000 Cycles Minimum At 1/2 PSI Maximum Pressure Each Cycle And At Maximum Electrical Load.
- 7.0 Electrical Rating
- 7.1 300 Va Pilot Duty At 115 to 277 Vac
- 7.2 15a Non-Inductive to 277 Vac
- 8.0 Contact Arrangement: SPDT
- 8.0 Position Of Switch Contacts Before Pressure Is Applied:



**SPECIFICATIONS: SWITCHING ELEMENT "A"**

- 1.0 Mounting Position: Diaphragm Vertical (See Diagram Below).
- 2.0 Set Point (Sealed): Factory Set @ 0.65" ±.13" i.e. 50" w.c. Pressure Rise Vertical Plane.
- 2.1 Field Adjustable: "Operate Range" .05" w.c. to 2.0" w.c.
- 2.2 Field Adjustable: "Release Range" .04" w.c. to 1.9" w.c.
- 3.0 Approximate Switching Differential: Progressive; Increasing From .02 ±.01" w.c. at Minimum Set Point To Approximately .1" w.c. At Maximum Set Point.
- 4.0 Measured Media: Air
- 5.0 Operating Temperature Range: -40° to 175° F (-40.0° C to 80.0° C).
- 6.0 Life: 100,000 Cycles Minimum At 1/2 PSI Maximum Pressure Each Cycle And At Maximum Electrical Load.
- 7.0 Electrical Rating
- 7.1 300 Va Pilot Duty At 115 to 277 Vac
- 7.2 15a Non-Inductive to 277 Vac
- 8.0 Contact Arrangement: SPDT
- 8.0 Position Of Switch Contacts Before Pressure Is Applied:



**NOTES:**

1. External Adjustment Screw - Sealed
2. Sample Line Connectors, (1) High Pressure and (2) Low Pressure, Complete With Nut and Ferrule Will Accept 3/4" OD Tubing Is Copper, Aluminum or Plastic.
3. Approval or Recognition By U.L. File MH213; and C.S.A. File LR18754.

SENSING SWITCH SPECIFICATIONS						-CAPTIVE AIR		
CLEVELAND CONTROLS MODEL: DDP-106-177								
REV	DATE	BY	CHKD	APP'D	CHG'D	Cleveland Controls division of UniControl Inc. 1111 Brookpark Rd. Cleveland, Ohio 44123-5625		
0-00	08/15/82					3X-1274	300-1206	APR/84/1
DRAWING RELEASE NO. 170						US00 09	8-SET 1	OF 1
						B20741-177		