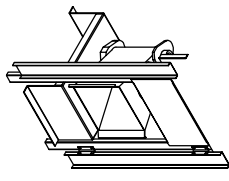
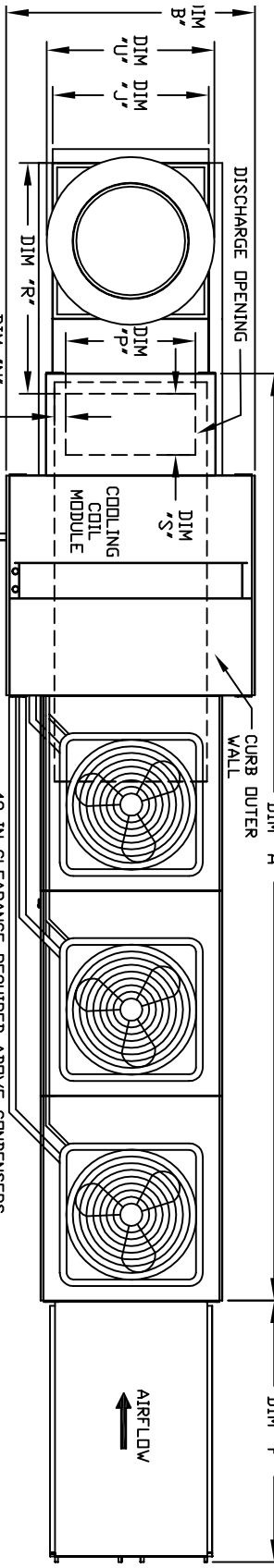


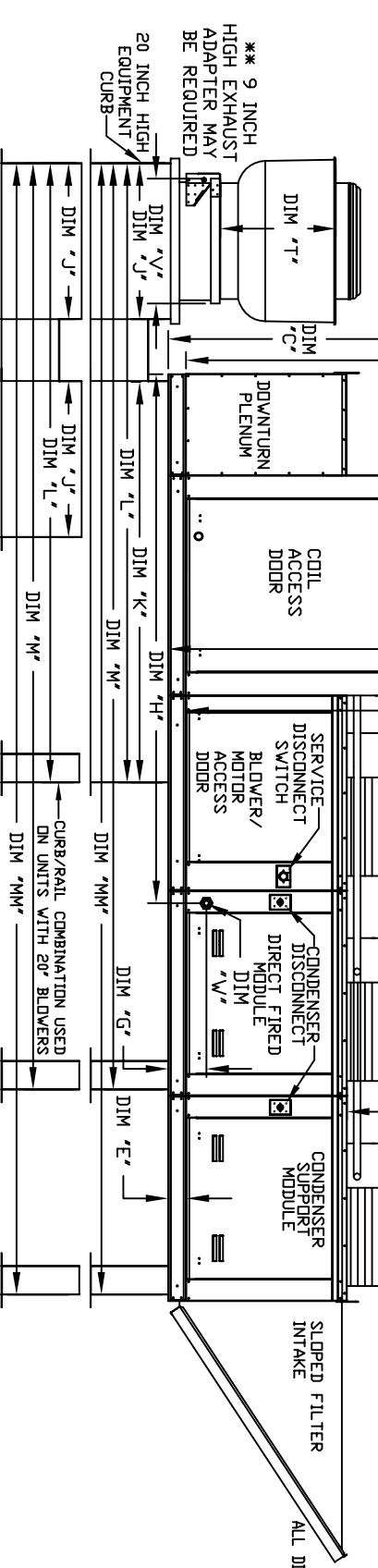
MODULAR OUTDOOR DOWN DISCHARGE DIRECT FIRED HEATER-ROOF TOP PACKAGE WITH COOLING AND INTAKE HOOD



Direct Fired (DF) Profile Plate Assembly



ALL DIMENSIONS ARE NOMINAL AND GIVEN IN INCHES



MODEL #	T	U	V	S
BDU12	14-1/2	22	19	18
BDU18	18-1/2	27-1/4	21	18
BDU23	21-1/2	30-1/4	21	18
BDU28	23-1/2	33-3/4	24-3/4	28
BDU33	29-1/2	38-7/8	28	33
BDU38	30-5/8	43-3/8	33	38
BDU43	33-1/2	52-3/4	40	43

MAX. ROOF OPENING 2" SMALLER THAN CURB OUTSIDE DIMENSION

Direct Fired Profile Plate Specifications:
 Direct fired burners shall have patented (US Patent No. US6629532B2) self-adjusting profile plates that allow burners to achieve clean combustion by lifting by-product levels to a maximum of 50ppm of carbon monoxide (CO), and 0.5ppm of nitrogen dioxide (NO2).
 Application:
 Spring-loaded burner profile plates are engineered to automatically react to the momentum of a fresh air stream, without the need for any motors or actuators to mechanically adjust them. With this feature, all DF units are designed for demand control ventilation (DCV) requirements.
Specifications:
 All profile plate assemblies shall be included in the DF unit's ETL listing and comply with combined safety standards ANSI Z83.4 and CSA 3.7 (non-recirculating DF heaters) and ANSI Z83.18 (recirculating DF heaters).
General Construction:
 Profile plates shall be formed from G90 galvanized steel.
 Profile plates shall vary in size per unit.
 Profile plates shall be made from the same plate as the discharge of the burner.
 Inset plates shall incorporate a 10 degree chamfer to properly fit and align with the main plate.
 Inset plates shall be made from plated steel.
 Spring hinges shall be made from plated steel.

MODEL	UNIT DIMENSIONS				CURB/RAIL				DISCHARGE OPENING								
	A	B	C	D	E	F	G	H	J	K	L	M	N	P	R	S	
BDU1200-618	165	196-1/4	54-3/8	51-1/8	5-1/4	51-5/8	9-1/2	114-7/16	35	84	133	199-5/8	241-7/8	6-5/16	22-3/8	149-1/2	18
BDU1250-618	165	196-1/4	54-3/8	51-1/8	5-1/4	51-5/8	9-1/2	114-7/16	35	84	133	199-5/8	241-7/8	6-5/16	22-3/8	149-1/2	18
BDU1300-618	165	196-1/4	54-3/8	51-1/8	5-1/4	51-5/8	9-1/2	114-7/16	35	84	133	199-5/8	241-7/8	6-5/16	22-3/8	149-1/2	18
BDU1500-920	257-1/2	60-7/16	64-3/8	59-1/8	5-1/4	76-3/8	13-9/16	151	42	115-3/16	171-3/16	255-7/8	310-3/16	5-1/4	31-1/2	56-13/16	23-1/2

CONDENSING UNIT WEIGHT TO WEIGHT IN TABLE ABOVE

MODEL	WEIGHT #1	TONNAGE #2	TONNAGE #3	CC	DD	EE
15 TON-9201591 LBS	5 TON	5 TON	5 TON	32-13/16	76-3/16	70-7/8
15 TON-9201591 LBS	5 TON	5 TON	5 TON	32-13/16	97-3/16	91-15/16

DATA REFERENCE