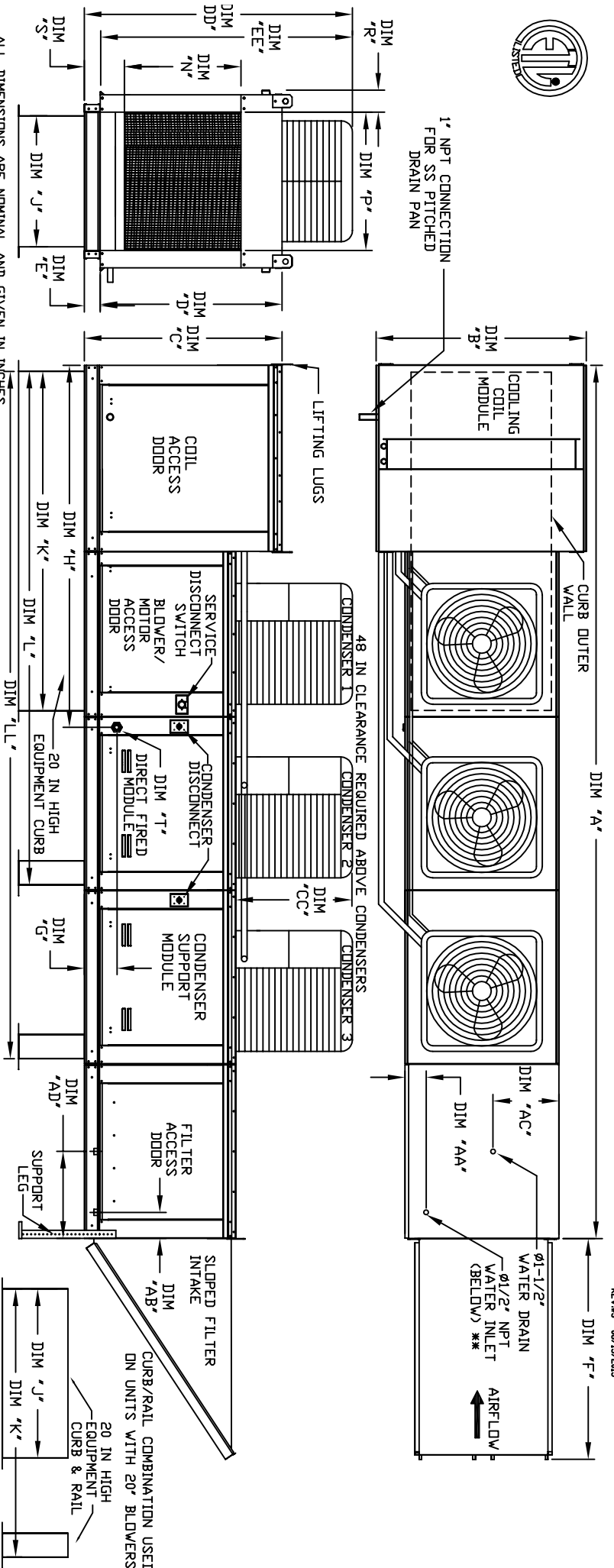


MODULAR OUTDOOR SIDE DISCHARGE DIRECT FIRED HEATER PACKAGED UNIT WITH COOLING, EVAPORATIVE COOLER INTAKE AND INTAKE HOOD



HCER SWAC-49U-15
REV A3 06/15/2015

ALL DIMENSIONS ARE NOMINAL AND GIVEN IN INCHES.

MODEL	UNIT DIMENSIONS										CURB/RAIL	DISCHARGE OPENING			WATER INLET DRAIN OPENING			FILT. FILTER VELOCITY					
	A	B	C	D	E	F	G	H	J	K		L	N	P	R	S	AA	AB	AC	AD	AE		
D-500-G18	210-1/8	54-3/8	56-3/8	51-1/8	51-1/4	51-5/8	9-1/2	90-1/16	35	84	126-1/4	168-1/2	29-5/8	30	11-1/2	7-3/8	4-1/2	5-3/4	20	19	16"x20"x2" (6)	8800	CFM = 762 FPM
D-750-G18	210-1/8	34-3/8	36-3/8	51-1/8	51-1/4	51-5/8	9-1/2	90-1/16	35	84	126-1/4	168-1/2	29-5/8	30	11-1/2	7-3/8	4-1/2	5-3/4	20	19	16"x20"x2" (6)	8800	CFM = 762 FPM
D-1000-G18	210-1/8	34-3/8	36-3/8	51-1/8	51-1/4	51-5/8	9-1/2	90-1/16	35	84	126-1/4	168-1/2	29-5/8	30	11-1/2	7-3/8	4-1/2	5-3/4	20	19	16"x20"x2" (6)	8800	CFM = 762 FPM
D-1500-G18	262-1/2	60-7/16	64-3/8	59-1/8	51-1/4	51-5/8	9-1/2	120-5/8	42	115-3/16	169-7/16	223-3/4	36-3/4	34	12-1/2	7-3/8	4-1/2	5-3/4	23	23	17-1/2"x20"x2" (10)	13000	CFM = 743 FPM
D-1500-920	262-1/2	60-7/16	64-3/8	59-1/8	51-1/4	51-5/8	9-1/2	120-5/8	42	115-3/16	169-7/16	223-3/4	36-3/4	34	12-1/2	7-3/8	4-1/2	5-3/4	23	23	17-1/2"x20"x2" (10)	13000	CFM = 743 FPM

UNIT INFORMATION

MODEL	BURNER				GAS PRESSURE	GAS CONNECTION	TINNAGE RANGE	STANDARD EVAPORATIVE COOLING UNIT		GELDEK EVAPORATIVE COOLING UNIT								
	LENGTH	BTU	ADJ. BTU	HIGH				TOT. WEIGHT	MEDIA SIZE & QTY	VEL. & MAX. GPM/INCH/LESS	MAX. FLOW RATE	TOT. WEIGHT	MEDIA SIZE & QTY	VEL. & MAX. GPM/INCH/LESS	MAX. FLOW RATE			
D-500-G18	12"	18	350	7" WC	14" WC	15 TON	15 TON	15 TON	1725 LBS	20"x25"x2" (8)	348 FPM	14	7 GPH	1715 LBS	30"x36"x12"	1067 FPM	28	8.4 GPH
D-750-G18	18"	27.5	82.5	7" WC	14" WC	15 TON	15 TON	15 TON	1725 LBS	20"x25"x2" (8)	348 FPM	14	7 GPH	1720 LBS	30"x36"x12"	1067 FPM	28	8.4 GPH
D-1000-G18	24"	36.6	110	7" WC	14" WC	15 TON	15 TON	15 TON	1725 LBS	20"x25"x2" (8)	348 FPM	14	7 GPH	1725 LBS	30"x36"x12"	1067 FPM	28	8.4 GPH
D-1500-920	24"	36.6	110	7" WC	14" WC	15 TON	15 TON	15 TON	2760 LBS	16"x20"x2" (15)	572 FPM	24	12 GPH	2730 LBS	38"x43"x12"	1382 FPM	35	10.15 GPH
D-1500-920	30"	45.8	137.5	7" WC	5 PSI	15 TON	15 TON	15 TON	2775 LBS	16"x20"x2" (15)	572 FPM	24	12 GPH	2745 LBS	38"x43"x12"	1382 FPM	35	10.15 GPH

MAX. ROOF OPENING 2" SMALLER THAN CURB OUTSIDE DIMENSION

ADD CONDENSING UNIT WEIGHT TO WEIGHT IN TABLE ABOVE

MAX. EVAP. WATER PRESSURE = 50 PSI @ 70 DEG. F

CONDENSER INFORMATION

MODEL	WEIGHT*	#1	#2	#3	CC	DD	EE
15 TON-G18	151 LBS	5	5	5	TON	5	TON
15 TON-920	151 LBS	5	5	5	TON	5	TON
32-13/16	151 LBS	5	5	5	TON	5	TON
76-3/16	151 LBS	5	5	5	TON	5	TON
70-7/8	151 LBS	5	5	5	TON	5	TON
92-13/16	151 LBS	5	5	5	TON	5	TON
97-3/16	151 LBS	5	5	5	TON	5	TON
91-15/16	151 LBS	5	5	5	TON	5	TON

R410A REFRIGERANT

Direct Fired Profile Plate Specifications

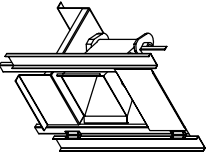
Direct fired burners shall have patented US Patent No. US6629528B2, self-adjusting profile plates designed to ensure proper air velocity and pressure drop across the burner. Profile plates shall allow burners to achieve clean combustion by limiting by-product levels to a maximum of 3ppm of carbon monoxide (CO), and 50ppm of nitrogen oxide (NOx).

Additional burner profile plates are engineered to automatically react to the composition of a fresh air stream, without the need for any motors or actuators, to mechanically adjust them. With this feature, all DF units are designed for demand control ventilation (DCV) requirements.

All profile plate assemblies shall be included in the DF unit's ETL listing and comply with combined safety standards ANSI Z83.4 and CSA 3.7 Non-recirculating DF heaters and ANSI Z83.18 recirculating DF heaters.

General Construction: Profile plates shall be formed from G90 galvanized steel.

Profile plates shall be formed from G90 galvanized steel. Profile plates shall be mounted along the same plane as the discharge of the burner. Design shall incorporate properly torqued, permanently mounted spring hinges.



Direct Fired (DF) Profile Plate Assembly