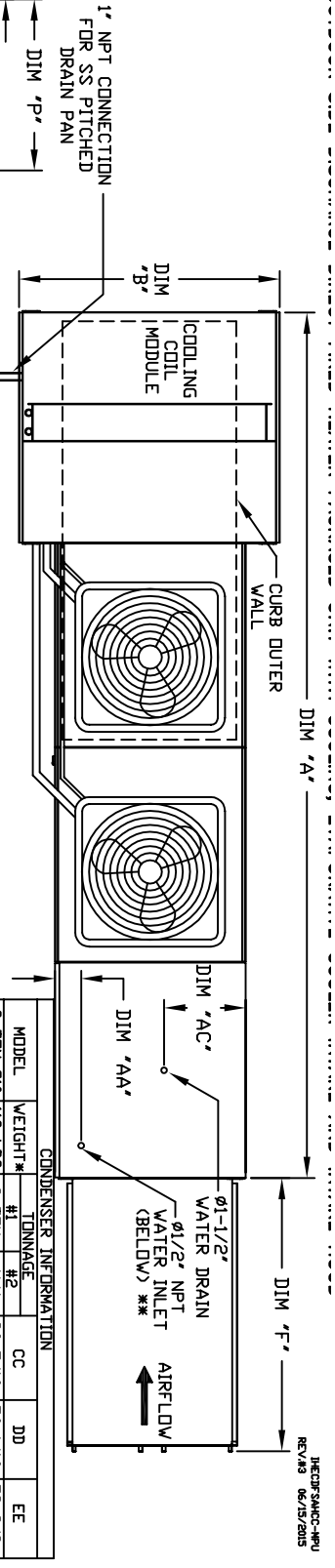




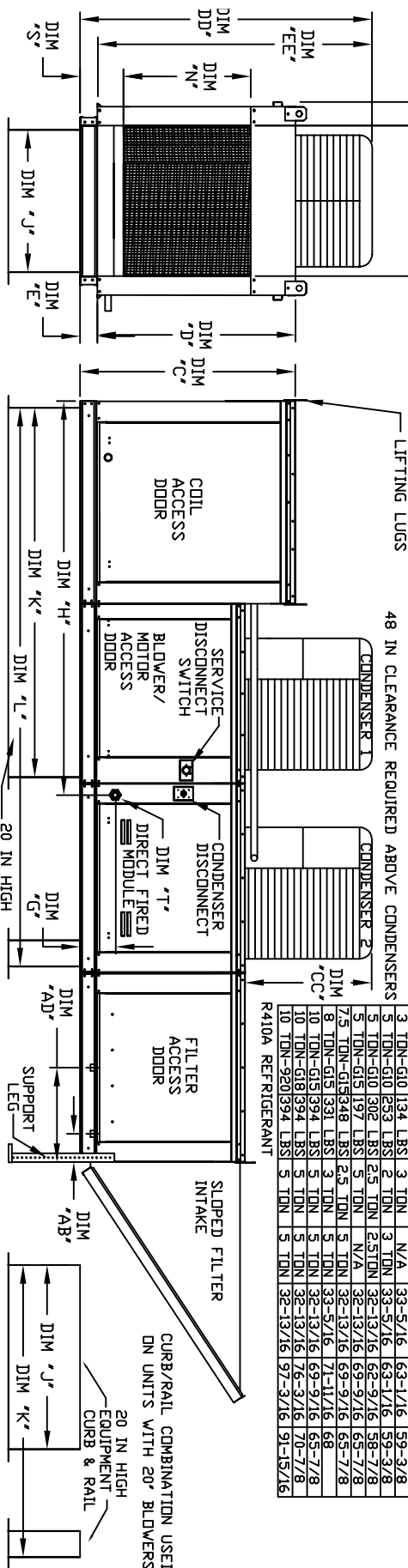
1HEDCR-SM6C-RPU  
REV#3 06/15/2015



48 IN CLEARANCE REQUIRED ABOVE CONDENSERS

CONDENSER INFORMATION

MODEL	WEIGHT #	TONNAGE		CC	DD	EE
#1	#2	#1	#2			
2 TON-G10	119 LBS	2 TON	N/A	26-5/16	56-1/16	52-3/8
3 TON-G10	134 LBS	3 TON	N/A	33-5/16	63-1/16	59-3/8
5 TON-G10	153 LBS	2 TON	N/A	33-5/16	63-1/16	59-3/8
5 TON-G10	153 LBS	3 TON	N/A	33-5/16	63-1/16	59-3/8
7 1/2 TON-G10	197 LBS	2 5/8 TON	N/A	35-13/16	62-9/16	58-7/8
7 1/2 TON-G10	197 LBS	3 TON	N/A	35-13/16	62-9/16	58-7/8
8 TON-G15	197 LBS	2 1/2 TON	N/A	35-13/16	62-9/16	58-7/8
8 TON-G15	197 LBS	3 TON	N/A	35-13/16	62-9/16	58-7/8
10 TON-G18	239 LBS	5 TON	N/A	38-1/16	69-9/16	65-7/8
10 TON-G18	239 LBS	5 TON	N/A	38-1/16	69-9/16	65-7/8
12 TON-G20	294 LBS	5 TON	N/A	38-1/16	69-9/16	65-7/8
12 TON-G20	294 LBS	5 TON	N/A	38-1/16	69-9/16	65-7/8
15 TON-G20	394 LBS	5 TON	N/A	38-1/16	69-9/16	65-7/8
15 TON-G20	394 LBS	5 TON	N/A	38-1/16	69-9/16	65-7/8



ALL DIMENSIONS ARE NOMINAL AND GIVEN IN INCHES.

UNIT INFORMATION

MODEL	A	B	C	D	E	F	G	H	J	K	L	N	P	R	S	AA	AB	AC	AD	AE
D1250-G10	149-1/8	39-3/8	42-3/4	39	3-3/4	44-3/8	7-13/16	77-1/16	21	71	113-1/4	17-1/2	16	11	5-3/4	4-1/2	13	16	16-x20-x2" (3)	23000 CFM = 572 FPM
D1500-G10	149-1/8	39-3/8	42-3/4	39	3-3/4	44-3/8	7-13/16	77-1/16	21	71	113-1/4	17-1/2	16	11	5-3/4	4-1/2	13	16	16-x20-x2" (3)	23000 CFM = 572 FPM
D1750-G15	156-7/8	49-3/8	47-3/4	44	3-3/4	53-5/8	7-13/16	85-1/16	31	79	121-1/4	29-3/4	22-3/4	12-5/8	5-3/4	4-1/2	18	16	20-x25-x2" (3)	26000 CFM = 696 FPM
D1500-G15	156-7/8	49-3/8	47-3/4	44	3-3/4	53-5/8	7-13/16	85-1/16	31	79	121-1/4	29-3/4	22-3/4	12-5/8	5-3/4	4-1/2	18	16	20-x25-x2" (3)	26000 CFM = 696 FPM
D1750-G18	167-7/8	54-3/8	47-3/4	44	3-3/4	53-5/8	7-13/16	85-1/16	31	79	121-1/4	29-3/4	22-3/4	12-5/8	5-3/4	4-1/2	18	16	20-x25-x2" (3)	26000 CFM = 696 FPM
D1500-G18	167-7/8	54-3/8	47-3/4	44	3-3/4	53-5/8	7-13/16	85-1/16	31	79	121-1/4	29-3/4	22-3/4	12-5/8	5-3/4	4-1/2	18	16	20-x25-x2" (3)	26000 CFM = 696 FPM
D1750-G18	167-7/8	54-3/8	47-3/4	44	3-3/4	53-5/8	7-13/16	85-1/16	31	79	121-1/4	29-3/4	22-3/4	12-5/8	5-3/4	4-1/2	18	16	20-x25-x2" (3)	26000 CFM = 696 FPM
D1500-G18	167-7/8	54-3/8	47-3/4	44	3-3/4	53-5/8	7-13/16	85-1/16	31	79	121-1/4	29-3/4	22-3/4	12-5/8	5-3/4	4-1/2	18	16	20-x25-x2" (3)	26000 CFM = 696 FPM
D1750-G18	167-7/8	54-3/8	47-3/4	44	3-3/4	53-5/8	7-13/16	85-1/16	31	79	121-1/4	29-3/4	22-3/4	12-5/8	5-3/4	4-1/2	18	16	20-x25-x2" (3)	26000 CFM = 696 FPM
D1000-G20	208-3/16	60-7/16	64-3/8	51-1/8	5-1/4	51-5/8	9-1/2	90-1/16	35	84	126-1/4	29-5/8	30	11-1/2	7-3/8	4-1/2	20	19	16-x20-x2" (6)	28000 CFM = 762 FPM
D1500-G20	208-3/16	60-7/16	64-3/8	51-1/8	5-1/4	51-5/8	9-1/2	90-1/16	35	84	126-1/4	29-5/8	30	11-1/2	7-3/8	4-1/2	20	19	16-x20-x2" (6)	28000 CFM = 762 FPM
D1500-G20	208-3/16	60-7/16	64-3/8	51-1/8	5-1/4	51-5/8	9-1/2	90-1/16	35	84	126-1/4	29-5/8	30	11-1/2	7-3/8	4-1/2	20	19	16-x20-x2" (6)	28000 CFM = 762 FPM

STANDARD EVAPORATIVE COOLING UNIT			
MODEL	TOT. WEIGHT	MEDIA SIZE & QTY	MAX. FLOW RATE
D1080	1080 LBS	20"x25"x2" (3)	406 FPM
D1450	1450 LBS	16"x20"x2" (8)	429 FPM
D1450	1450 LBS	16"x20"x2" (8)	429 FPM
D1450	1450 LBS	20"x25"x2" (8)	429 FPM
D1715	1715 LBS	20"x25"x2" (8)	348 FPM
D1715	1715 LBS	20"x25"x2" (8)	348 FPM
D1715	1715 LBS	20"x25"x2" (8)	348 FPM
D2715	2715 LBS	16"x20"x2" (15)	572 FPM
D2715	2715 LBS	16"x20"x2" (15)	572 FPM
D2715	2715 LBS	16"x20"x2" (15)	572 FPM

CELLER EVAPORATIVE COOLING UNIT			
MODEL	TOT. WEIGHT	MEDIA SIZE & QTY	MAX. FLOW RATE
D1085	1085 LBS	20"x24"x12" (3)	1050 FPM
D1445	1445 LBS	25"x32"x12" (2)	1080 FPM
D1445	1445 LBS	25"x32"x12" (2)	1080 FPM
D1445	1445 LBS	25"x32"x12" (2)	1080 FPM
D1705	1705 LBS	30"x36"x12" (2)	1067 FPM
D1710	1710 LBS	30"x36"x12" (2)	1067 FPM
D1715	1715 LBS	30"x36"x12" (2)	1067 FPM
D2715	2715 LBS	38"x43"x12" (3)	1322 FPM
D2715	2715 LBS	38"x43"x12" (3)	1322 FPM
D2715	2715 LBS	38"x43"x12" (3)	1322 FPM

**MAX. RUDF OPENING 2 INCHES SMALLER THAN CURB OUTSIDE DIMENSION**

**MAX. EVAP. WATER PRESSURE = 50 PSI @ 70 DEG. F**

Direct Fired Profile Plate Specifications:  
Direct fired burners shall have patented QUS Patent No. US6692322B2 self-adjusting profile plate technology to achieve clean combustion by limiting by-product levels to a maximum of 50ppm of carbon monoxide (CO) and 50ppm of nitrogen dioxide (NO2).  
Application: Spring-loaded burner profile plates are engineered to automatically react to the momentary fluctuations in burner flame height, ensuring a consistent flame height and preventing burner overheating. All profile plate assemblies shall be included in the JF unit's ETL listing and comply with combined safety standards ANSI Z83.4 and CSA 37 (non-recirculating JF heaters) and ANSI Z83.8 (recirculating JF heaters).  
Construction: Burner profile plates shall be formed from 580 galvanized steel.  
General Construction: Burner profile plates shall be formed from 580 galvanized steel.  
Profile plates shall be mounted on the same plane as the discharge of the burner.  
Design shall incorporate properly torqued, permanently mounted spring hinges.

Direct Fired GRP Profile Plate Assembly