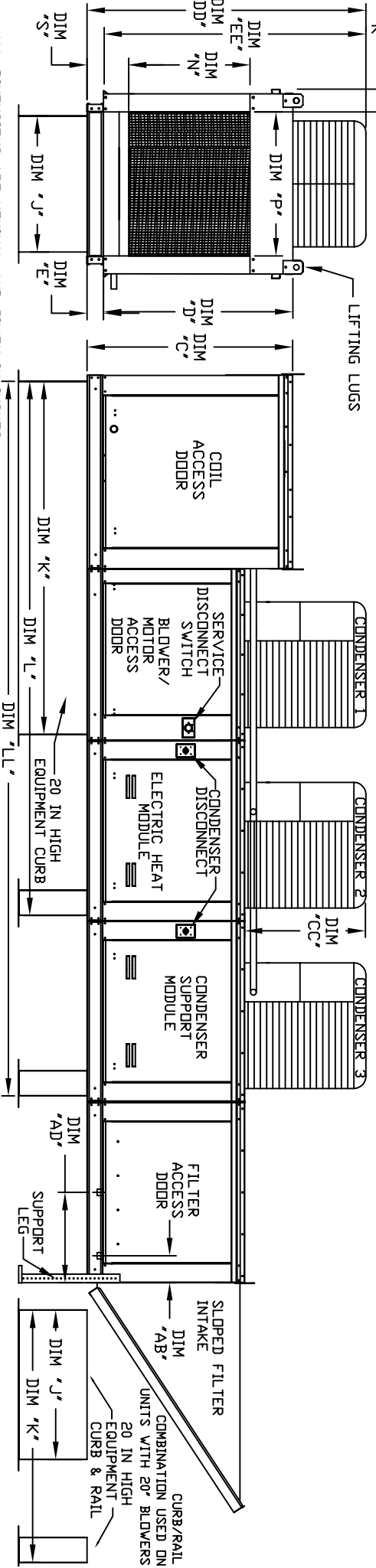
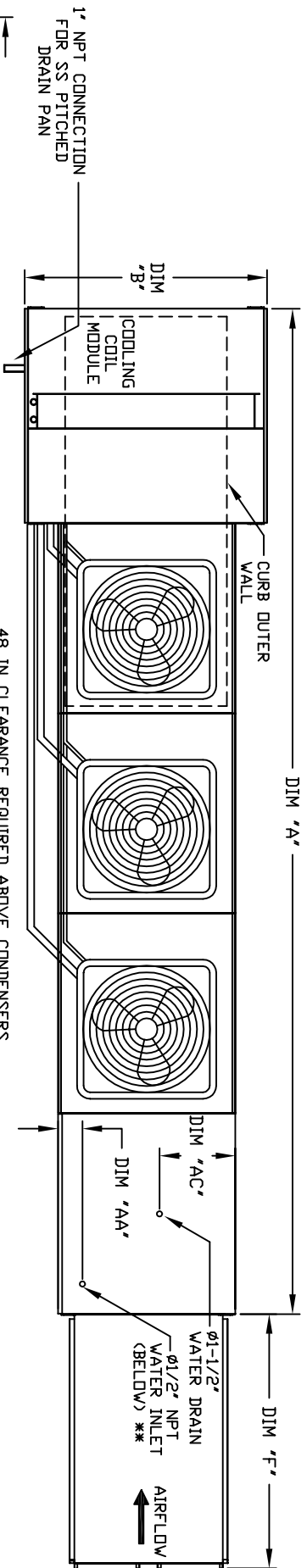


MODULAR OUTDOOR SIDE DISCHARGE ELECTRIC HEATER PACKAGED UNIT WITH COOLING, EVAPORATIVE COOLER INTAKE AND INTAKE HOOD

THECERSHACC-HPU-15
REV. #2 06/15/2015



ALL DIMENSIONS ARE NOMINAL AND GIVEN IN INCHES.

MODEL		A	B	C	D	E	F	J	K	L	LL	N	P	R	S	AA	AB	AC	AD	AD	AA'	AB'	AA''	AB''		
E3-G18	210-1/8	54-3/8	56-3/8	51-1/8	5-1/4	51-5/8	35	84	126-1/4	168-1/2	29-5/8	30	11-1/2	7-3/8	4-1/2	5-3/4	20	19	16'-x20'-x2" (G)	16'-x20'-x2" (G)	15'-x20'-x2" (G)	16'-x20'-x2" (G)	16'-x20'-x2" (G)	16'-x20'-x2" (G)		
E4-920	266-1/2	60-7/16	64-3/8	59-1/8	5-1/4	76-3/8	42	115-3/16	169-7/16	223-3/4	36-3/4	34	12-1/2	7-3/8	4-1/2	5-3/4	23-1/2	17-1/2	16'-x20'-x2" (G)	16'-x20'-x2" (G)	15'-x20'-x2" (G)	16'-x20'-x2" (G)	16'-x20'-x2" (G)			
UNIT INFORMATION																										
STANDARD EVAPORATIVE COOLING UNIT												CELDEK EVAPORATIVE COOLING UNIT														
MODEL	MIN	RANGE	TOT. WEIGHT	MEDIA SIZE & QTY	VEL. @ MAX. CFM	NOZZLES	MAX. FLOW RATE	TOT. WEIGHT	MEDIA SIZE & QTY	VEL. @ MAX. CFM	NOZZLES	MAX. FLOW RATE	TOT. WEIGHT	MEDIA SIZE & QTY	VEL. @ MAX. CFM	NOZZLES	MAX. FLOW RATE	TOT. WEIGHT	MEDIA SIZE & QTY	VEL. @ MAX. CFM	NOZZLES	MAX. FLOW RATE	TOT. WEIGHT	MEDIA SIZE & QTY		
E3-G18	15 Ton	15 Ton	1730 LBS	20'-x25'-x2" (8)	348 FPM	14	7 GPH	1720 LBS	30'-x36'-x12"	1067 FPM	28	8.4 GPH	E4-920	15 Ton	15 Ton	2780 LBS	16'-x20'-x2" (15)	572 FPM	24	12 GPH	2750 LBS	38'-x43'-x12"	1322 FPM	35	10.15 GPH	
*ADD CONDENSING UNIT WEIGHT TO WEIGHT IN TABLE ABOVE												** MAX. EVAP. WATER PRESSURE = 50 PSI @ 70 DEG F														
CONDENSER INFORMATION												MAX. ROOF OPENING 2' SMALLER THAN CURB OUTSIDE DIMENSION														

MODEL		#1	#2	#3	CC	DD	EE
15 TON-G18	591 LBS	5 TON	5 TON	5 TON	32-13/16	76-9/16	70-7/8
15 TON-920	591 LBS	5 TON	5 TON	5 TON	32-13/16	97-9/16	91-15/16

P4104A PERFORMER/P4104A