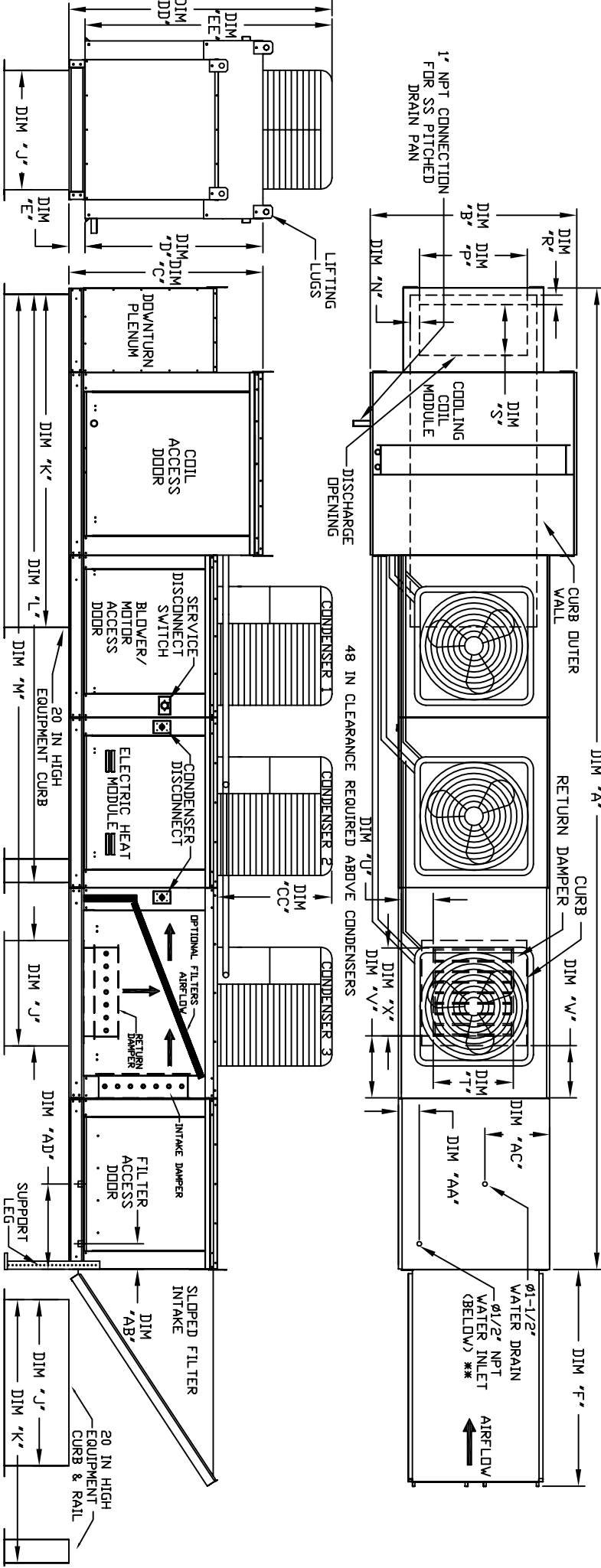


MODULAR OUTDOOR DOWN DISCHARGE ELECTRIC HEATER PACKAGED UNIT WITH COOLING, MIXING BOX, EVAPORATIVE COOLER INTAKE AND INTAKE HOOD

18CONDENACCOP-HPU-15
REV. #2 06/15/2015



ALL DIMENSIONS ARE NOMINAL AND GIVEN IN INCHES.

MODEL	A	B	C	D	E	F	J	K	L	M	N	P	R	S	T	U	V	W	X	AA	AB	AC	AD	AE																											
E3-G18	234	1/2	154	3/8	56	3/8	51	1/4	51	5/8	35	84	150	5/8	190	1/16	6	5	16	R2	3/8	1	1/2	18	28	8	7	4	1/2	30	4	1/2	5	3/4	20	19	16	20	2	6	2	16	20	2	6	2	16	20	2	6	2
E4-920	292	7/8	160	7/16	64	3/8	81	5/16	76	3/8	42	115	3/16	199	7/8	247	1/4	31	1/2	1	13/16	23	1/2	33	10	11	8	36	4	1/2	5	3/4	23	1/2	17	1/2	16	20	2	6	2	16	20	2	6	2					

UNIT INFORMATION

MODEL	TONNAGE RANGE	TOT. WEIGHT	MEDIA SIZE & QTY	VEL. @ MAX. CFM	NOZZLES	MAX. FLOW RATE
E3-G18	15 Ton	15 Ton	20"x25"x2" (6)	348 FPM	14	7 GPH
E4-920	15 Ton	15 Ton	34x30 LBS	16"x20"x2" (15)	372 FPM	12 GPH

*ADD CONDENSING UNIT WEIGHT TO WEIGHT IN TABLE ABOVE **MAX EVAP WATER PRESSURE = 50 PSI @ 70 DEG F

STANDARD EVAPORATIVE COOLING UNIT

MODEL	TONNAGE RANGE	TOT. WEIGHT	MEDIA SIZE & QTY	VEL. @ MAX. CFM	NOZZLES	MAX. FLOW RATE
E3-G18	15 Ton	15 Ton	20"x25"x2" (6)	348 FPM	14	7 GPH
E4-920	15 Ton	15 Ton	34x30 LBS	16"x20"x2" (15)	372 FPM	12 GPH

OPTIONAL MIXING BOX FILTERS

MODEL	TONNAGE RANGE	TOT. WEIGHT	MEDIA SIZE & QTY	VEL. @ MAX. CFM	NOZZLES	MAX. FLOW RATE
G18	15 Ton	15 Ton	15"x20"x2" (4), 15"x15"x2" (2)	1067 FPM	28	8.4 GPH
920	15 Ton	15 Ton	18"x25"x2" (4), 16"x20"x2" (2)	1322 FPM	35	10.13 GPH