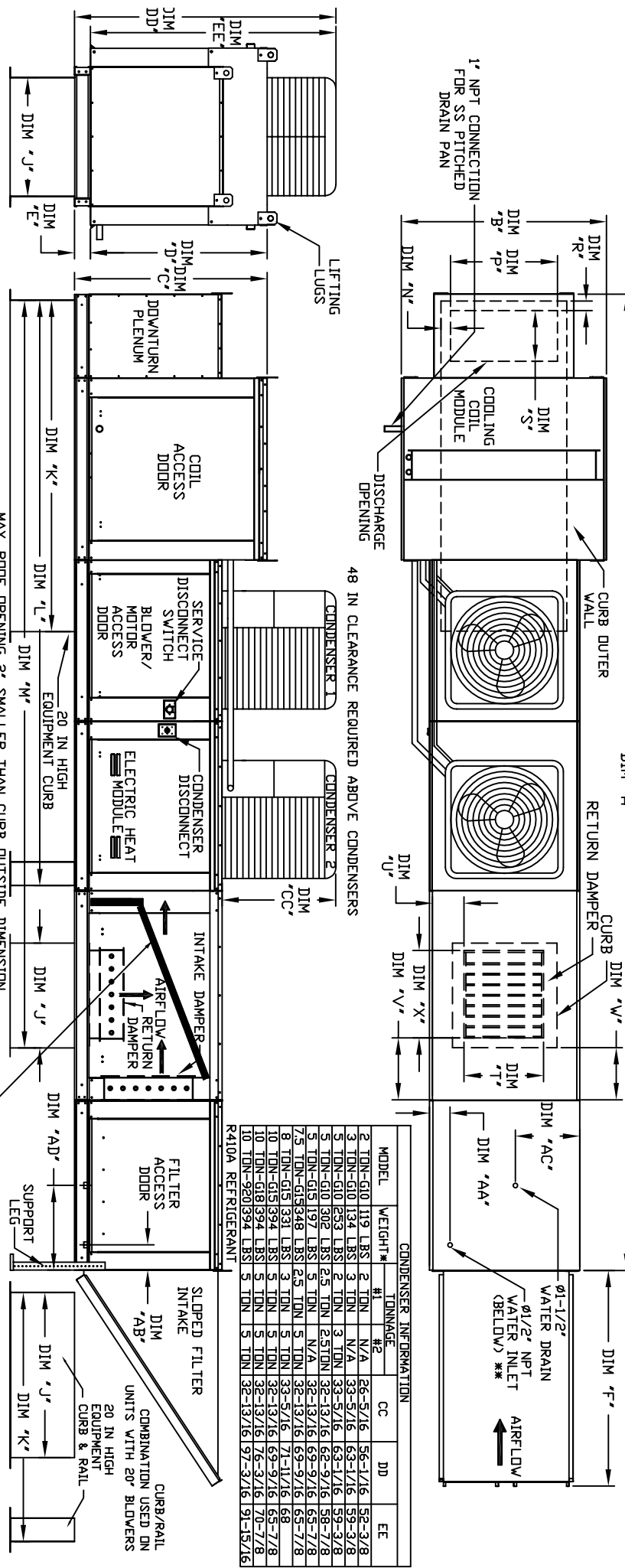


MODULAR OUTDOOR DOWN DISCHARGE ELECTRIC HEATER PACKAGED UNIT WITH COOLING, MIXING BOX, EVAPORATIVE COOLER INTAKE AND INTAKE HOOD

REVISIONS  
REV# 06/15/2015



ALL DIMENSIONS ARE NOMINAL AND GIVEN IN INCHES.

MAX. ROOF OPENING 2' SMALLER THAN CURB OUTSIDE DIMENSION

48 IN CLEARANCE REQUIRED ABOVE CONDENSERS

MODEL	A	B	C	D	E	F	J	K	L	M	N	P	R	S	T	U	V	X	AA	AB	AC	AD	AE
E1-G10	209-1/2	139-3/8	42-3/4	39	3-3/4	44-3/8	21	71	131-5/8	163-1/16	3-9/16	13-7/8	1-13/16	11-1/2	14	8	14	12-1/2	18	4-1/2	6-1/4	13	16
E2-G10	233-1/2	149-3/8	47-3/4	44	3-3/4	53-5/8	31	79	145-5/8	182-1/16	4-5/16	22-3/8	1-9/16	11	8	11	7-1/2	24	4-1/2	6-1/4	18	16	20
E3-G18	234-1/2	154-3/8	56-3/8	56	3-3/8	61-1/8	35	84	150-5/8	190-1/16	6-5/16	22-3/8	1-1/2	18	8	7	4-1/2	30	4-1/2	5-3/4	19	16	20
E4-920	292-7/16	164-3/8	64-3/8	64	3-3/8	71-1/4	42	115-3/16	199-7/8	247-13/16	5-1/4	31-1/2	1-13/16	23-1/2	33	10	11	36	4-1/2	5-3/4	23-1/2	20	20

MODEL	TONNAGE RANGE	TOT. WEIGHT	MEDIA SIZE & QTY	VEL. @ MAX. CFM	NOZZLES	MAX. FLOW RATE
E1-G10	2 Ton	1270 LBS	20"x25"x2" (3)	406 FPM	6	3 GPH
E2-G10	3 Ton	1745 LBS	16"x20"x2" (8)	429 FPM	10	6.5 GPH
E3-G18	10 Ton	2140 LBS	20"x25"x2" (8)	348 FPM	14	8.4 GPH
E4-920	10 Ton	3430 LBS	16"x20"x2" (15)	572 FPM	24	10.15 GPH

MODEL	TONNAGE RANGE	TOT. WEIGHT	MEDIA SIZE & QTY	VEL. @ MAX. CFM	NOZZLES	MAX. FLOW RATE
E1-G10	2 Ton	1270 LBS	20"x24"x12"	1050 FPM	12	3.9 GPH
E2-G10	3 Ton	1740 LBS	25"x32"x12"	1080 FPM	20	6.5 GPH
E3-G18	10 Ton	2130 LBS	30"x36"x12"	1067 FPM	28	8.4 GPH
E4-920	10 Ton	3400 LBS	38"x43"x12"	1322 FPM	35	10.15 GPH

MODEL	WEIGHT*	TONNAGE	#1	#2	CC	DD	EE
2 TON-G10	119 LBS	2 TON	N/A	N/A	26-5/16	56-1/16	52-3/8
3 TON-G10	134 LBS	3 TON	N/A	N/A	33-7/16	63-1/16	59-3/8
5 TON-G10	183 LBS	5 TON	3 TON	3 TON	33-7/16	63-1/16	59-3/8
7.5 TON-G15	197 LBS	5 TON	2.5 TON	2.5 TON	32-13/16	62-9/16	58-7/8
10 TON-G15	348 LBS	5 TON	N/A	N/A	32-13/16	62-9/16	58-7/8
8 TON-G15	331 LBS	3 TON	5 TON	5 TON	32-13/16	62-9/16	58-7/8
10 TON-G15	394 LBS	5 TON	5 TON	5 TON	32-13/16	62-9/16	58-7/8
10 TON-G18	394 LBS	5 TON	5 TON	5 TON	32-13/16	76-3/16	70-7/8
10 TON-920	394 LBS	5 TON	5 TON	5 TON	32-13/16	97-3/16	91-15/16

© 2015 YORK INTERNATIONAL, INC. YORK INTERNATIONAL, INC. YORK INTERNATIONAL, INC. YORK INTERNATIONAL, INC. YORK INTERNATIONAL, INC.