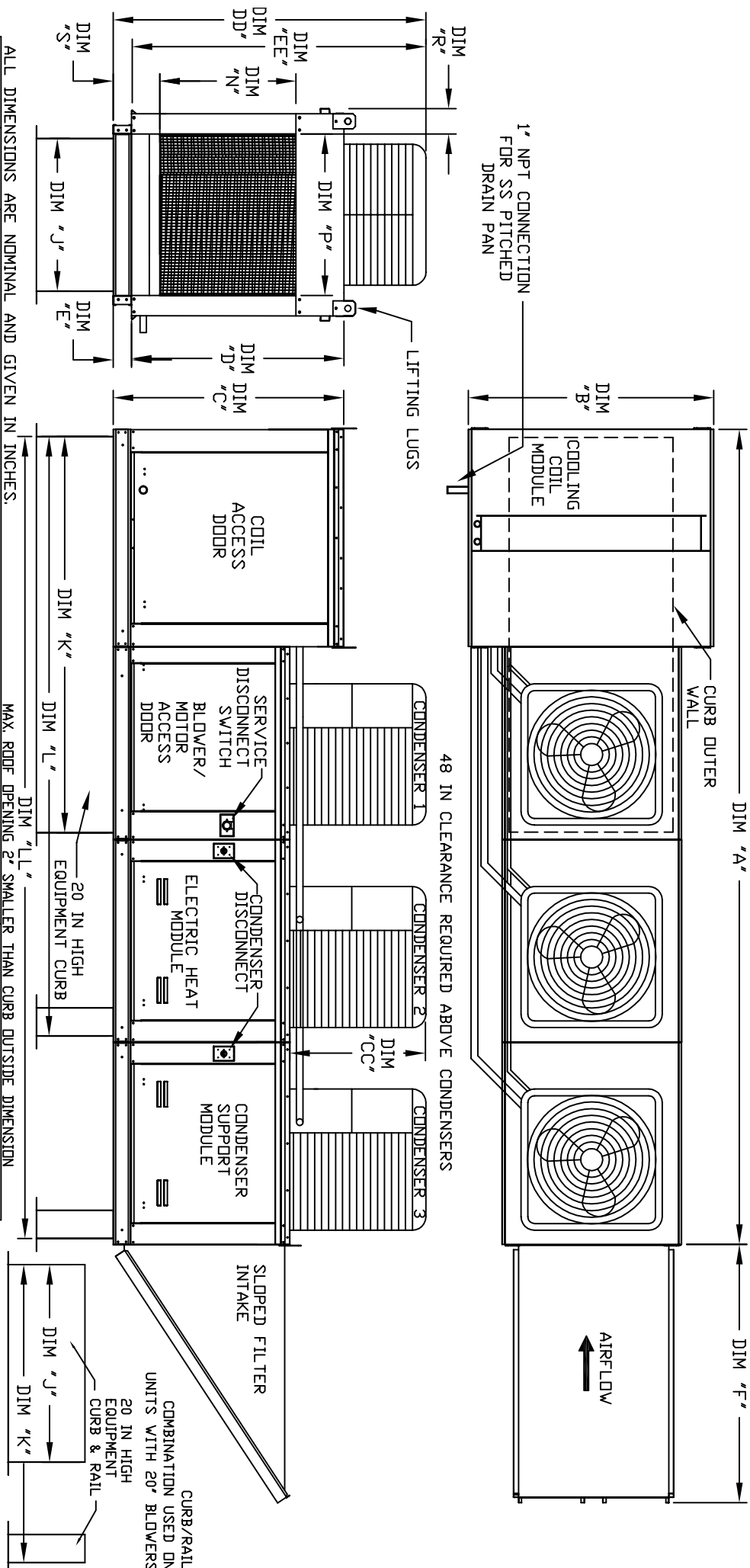


# MODULAR OUTDOOR SIDE DISCHARGE ELECTRIC HEATER PACKAGED UNIT WITH COOLING AND INTAKE HOOD

HEHSAC-APU-15  
REV#3 06/15/2015



ALL DIMENSIONS ARE NOMINAL AND GIVEN IN INCHES.

MODEL	WEIGHT	UNIT DIMENSIONS											CURB/RAIL	MAX. ROOF OPENING 2" SMALLER THAN CURB OUTSIDE DIMENSION DISCHARGE OPENING	
		A	B	C	D	E	F	J	K	L	LL	N			P
E3-G18	1450 LBS	171-7/8	54-3/8	56-3/8	51-1/8	5-1/4	51-5/8	35	84	126-1/4	168-1/2	29-5/8	30	11-1/2	7-3/8
E4-920	2450 LBS	227-1/8	60-7/16	64-3/8	59-1/8	5-1/4	76-3/8	42	115-3/16	169-7/16	223-3/4	36-3/4	34	12-1/2	7-3/8

UNIT INFORMATION.

MODEL	TONNAGE RANGE			FILTER SIZE & QTY	MAX. FILTER VELOCITY
	MIN	MAX			
E3-G18	15 Ton	15 Ton		16"x20"x2" (6)	@8000 CFM = 762 FPM
E4-920	15 Ton	15 Ton		16"x20"x2" (10)	@13000 CFM = 743 FPM

\*ADD CONDENSING UNIT WEIGHT TO WEIGHT IN TABLE ABOVE

MODEL	CONDENSER INFORMATION			CC	DD	EE
	WEIGHT*	#1	#2			
15 TON-G18	591 LBS	5 TON	5 TON	32-13/16	76-3/16	70-7/8
15 TON-920	591 LBS	5 TON	5 TON	32-13/16	97-3/16	91-15/16

DATA DEPENDENT