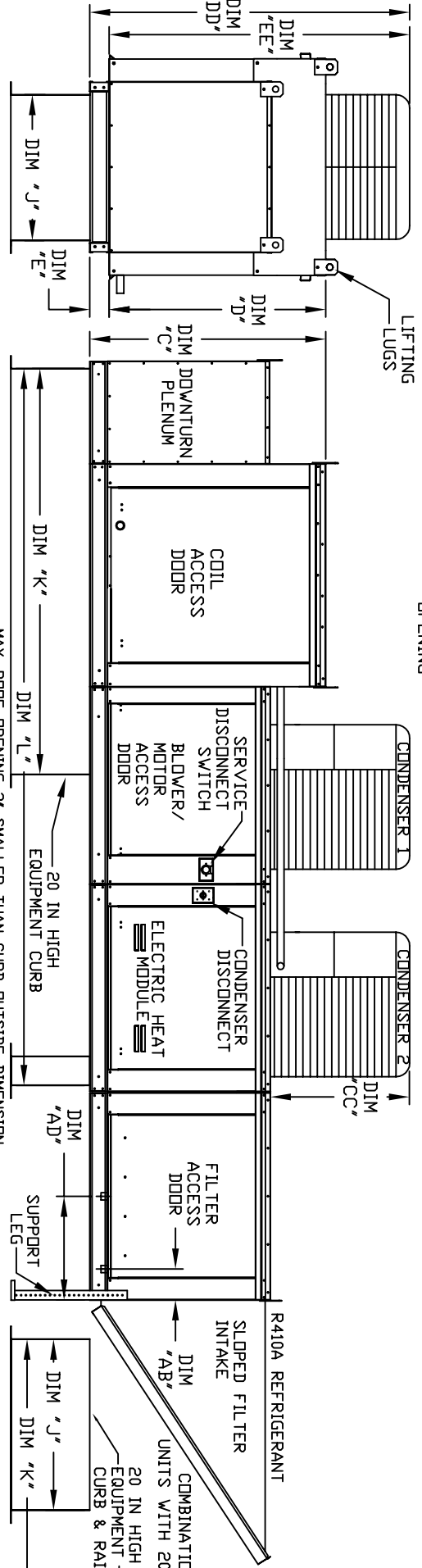
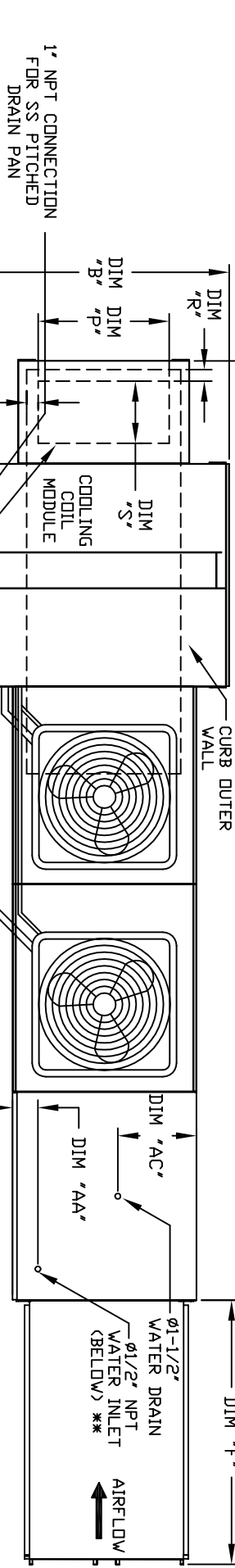


MODULAR OUTDOOR DOWN DISCHARGE ELECTRIC HEATER PACKAGED UNIT WITH COOLING, EVAPORATIVE COOLER INTAKE AND INTAKE HOOD

THESESAHCCDP-49U  
REV. A/E 06/15/2015



ALL DIMENSIONS ARE NOMINAL AND GIVEN IN INCHES.

MAX. ROOF OPENING 2" SMALLER THAN CURB OUTSIDE DIMENSION

MODEL	UNIT DIMENSIONS				CURB/RAIL				DISCHARGE OPENING				WATER INLET				DRAIN OPENING				INTAKE FILTER SIZE & QTY				MAX. FILTER VELOCITY
	A	B	C	D	E	F	J	K	L	N	P	R	S	AA	AB	AC	AD	AE	AF	AG	AH	AI	AJ		
E1-G10	167-1/4	39-3/8	42-3/4	39	3-3/4	44-3/8	21	71	131-5/8	3-9/16	13-7/8	1-13/16	11-1/2	4-1/2	5-1/4	13	16	16"x20"x2" (3)	23600 CFM = 686 FPM						
E2-G15	181-1/4	49-3/8	47-3/4	44	3-3/4	53-5/8	31	79	145-5/8	4-5/16	22-3/8	1-9/16	18	4-1/2	5-1/4	18	16	20"x25"x2" (3)	6500 CFM = 754 FPM						
E3-G18	192-1/4	54-3/8	56-3/8	51-1/8	5-1/4	51-5/8	35	84	150-5/8	5-7/16	22-3/8	1-1/2	18	4-1/2	5-3/4	20	19	16"x20"x2" (6)	8000 CFM = 762 FPM						
E4-9E20	238-9/16	60-7/16	64-3/8	59-1/8	5-1/4	76-3/8	42	115-3/16	199-13/16	5-1/4	31-1/2	1-13/16	23-1/2	4-1/2	5-3/4	23-1/2	17-1/2	16"x20"x2" (10)	13000 CFM = 743 FPM						

MODEL	TONNAGE RANGE		STANDARD EVAPORATIVE COOLING UNIT				CELDEK EVAPORATIVE COOLING UNIT					
	MIN	MAX	TOT. WEIGHT	MEDIA SIZE & QTY	VEL. @ MAX. CFM	NOZZLES	MAX. FLOW RATE	TOT. WEIGHT	MEDIA SIZE & QTY	VEL. @ MAX. CFM	NOZZLES	MAX. FLOW RATE
E1-G10	2 Ton	5 Ton	115 LBS	20"x25"x2" (3)	406 FPM	6	3 GPH	1120 LBS	20"x24"x12"	1050 FPM	12	3.9 GPH
E2-G15	5 Ton	10 Ton	1530 LBS	16"x20"x2" (8)	429 FPM	10	5 GPH	1525 LBS	25"x32"x12"	1080 FPM	20	6.5 GPH
E3-G18	10 Ton	10 Ton	1860 LBS	20"x25"x2" (8)	348 FPM	14	7 GPH	1850 LBS	30"x36"x12"	1067 FPM	28	8.4 GPH
E4-9E20	10 Ton	10 Ton	2955 LBS	16"x20"x2" (15)	572 FPM	24	12 GPH	2925 LBS	38"x43"x12"	1322 FPM	35	10.15 GPH

WARRANTY INFORMATION: UNIT VENTILATE TO EXTERIOR TO MAINTAIN AIRFLOW. MAX. ROOF OPENING 2" SMALLER THAN CURB OUTSIDE DIMENSION. R410A REFRIGERANT. SLOPED FILTER INTAKE. CURB/RAIL COMBINATION USED ON UNITS WITH 20" BLOWERS. 20 IN HIGH EQUIPMENT CURB & RAIL.