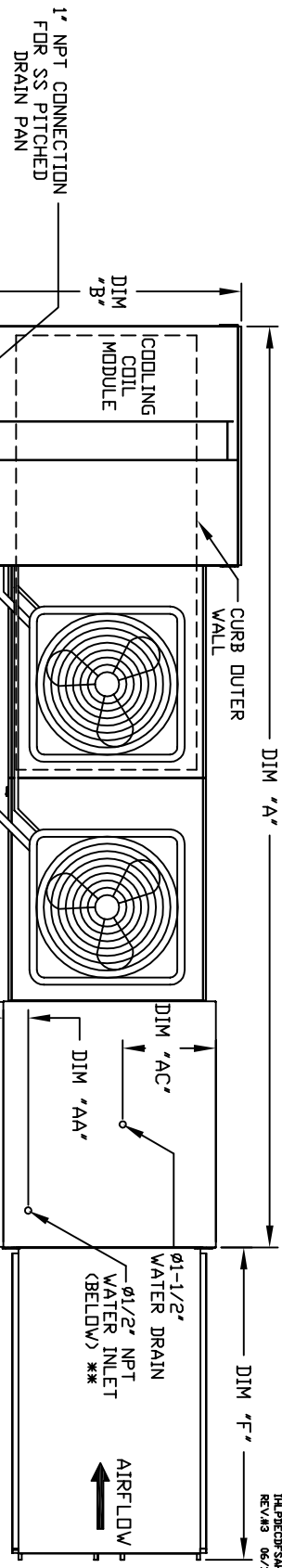




MODULAR OUTDOOR SIDE DISCHARGE DIRECT FIRED HEATER PACKAGED UNIT WITH COOLING, LPD EVAPORATIVE COOLER INTAKE AND INTAKE HOOD

1/4" BORE
REV#3 06/15/2015

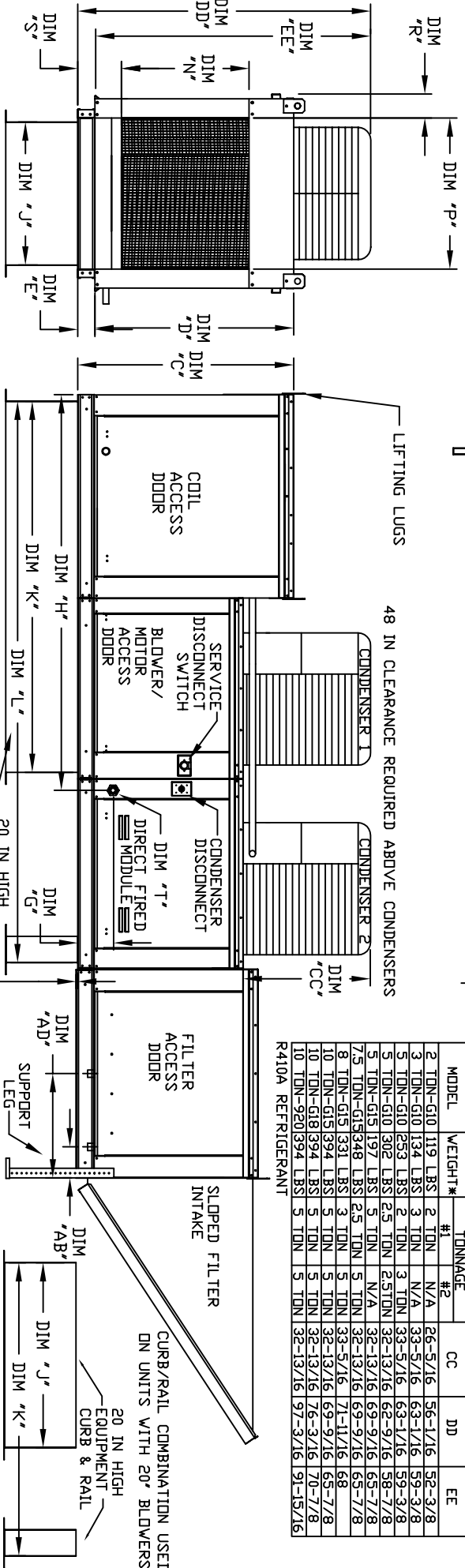


1" NPT CONNECTION FOR SS PITCHED DRAIN PAN

LIFTING LUGS

48 IN CLEARANCE REQUIRED ABOVE CONDENSERS

CONDENSER INFORMATION					
MODEL	WEIGHT*	#1	#2	CC	DD
2 TON-G10	119 LBS	2 TON	N/A	26-5/16	56-1/16
3 TON-G10	134 LBS	3 TON	N/A	33-5/16	63-1/16
4 TON-G10	153 LBS	4 TON	N/A	33-5/16	63-1/16
5 TON-G10	177 LBS	5 TON	2.5 TON	32-13/16	62-9/16
7.5 TON-G15	197 LBS	5 TON	N/A	32-13/16	62-9/16
8 TON-G15	331 LBS	5 TON	5 TON	33-5/16	71-1/16
10 TON-G15	394 LBS	5 TON	5 TON	32-13/16	69-9/16
10 TON-G18	394 LBS	5 TON	5 TON	32-13/16	70-7/8
10 TON-920	394 LBS	5 TON	5 TON	32-13/16	70-7/8
R410A REFRIGERANT		5 TON	5 TON	32-13/16	97-3/16



ALL DIMENSIONS ARE NOMINAL AND GIVEN IN INCHES.

20 IN HIGH EQUIPMENT CURB

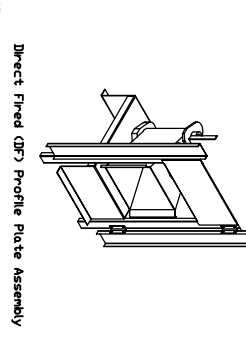
1-1/2" ON G15 UNITS ONLY

20 IN HIGH EQUIPMENT CURB & RAIL

MODEL	UNIT DIMENSIONS									
	A	B	C	D	E	F	G	H	J	K
D-250-G10	149-1/8	39-3/8	42-3/4	39	3-3/4	53-5/8	7-13/16	77-1/16	21	71
D-500-G10	149-1/8	39-3/8	42-3/4	39	3-3/4	53-5/8	7-13/16	77-1/16	21	71
D-750-G15	162-7/8	42-3/8	47-3/4	44	3-3/4	57-5/8	7-13/16	85-1/16	31	79
D-300-G15	162-7/8	42-3/8	47-3/4	44	3-3/4	57-5/8	7-13/16	85-1/16	31	79
D-750-G15	162-7/8	42-3/8	47-3/4	44	3-3/4	57-5/8	7-13/16	85-1/16	31	79
D-500-G18	165	54-3/8	56-3/8	51-1/8	5-1/4	76-3/8	9-1/2	90-1/16	35	84
D-750-G18	165	54-3/8	56-3/8	51-1/8	5-1/4	76-3/8	9-1/2	90-1/16	35	84
D-1000-G18	165	54-3/8	56-3/8	51-1/8	5-1/4	76-3/8	9-1/2	90-1/16	35	84
D-1500-920	208-3/16	60-7/16	64-3/8	59-1/8	5-1/4	76-3/8	13-9/16	120-5/8	42	115

MODEL	CURB/RAIL									
	L	M	N	P	R	S	AA	AB	AC	AD
D-250-G10	113-1/4	17-1/2	16	11	5-3/4	4-1/2	6-1/4	18	16	16
D-500-G10	113-1/4	17-1/2	16	11	5-3/4	4-1/2	6-1/4	18	16	16
D-750-G15	121-1/4	29-3/4	22-3/4	12-5/8	5-3/4	4-1/2	6-3/4	20	19	19
D-300-G15	121-1/4	29-3/4	22-3/4	12-5/8	5-3/4	4-1/2	6-3/4	20	19	19
D-750-G15	121-1/4	29-3/4	22-3/4	12-5/8	5-3/4	4-1/2	6-3/4	20	19	19
D-500-G18	126-1/4	29-5/8	30	11-1/2	7-3/8	4-1/2	6-3/4	23-1/2	17-1/2	17-1/2
D-750-G18	126-1/4	29-5/8	30	11-1/2	7-3/8	4-1/2	6-3/4	23-1/2	17-1/2	17-1/2
D-1000-G18	126-1/4	29-5/8	30	11-1/2	7-3/8	4-1/2	6-3/4	23-1/2	17-1/2	17-1/2
D-1500-920	169-1/2	36-3/4	34	12-1/2	7-3/8	4-1/2	6-3/4	28-7/8	17-1/2	17-1/2

MODEL	DISCHARGE OPENING									
	T	U	V	W	X	Y	Z	AA	AB	AC
D-250-G10	113-1/4	17-1/2	16	11	5-3/4	4-1/2	6-1/4	18	16	16
D-500-G10	113-1/4	17-1/2	16	11	5-3/4	4-1/2	6-1/4	18	16	16
D-750-G15	121-1/4	29-3/4	22-3/4	12-5/8	5-3/4	4-1/2	6-3/4	20	19	19
D-300-G15	121-1/4	29-3/4	22-3/4	12-5/8	5-3/4	4-1/2	6-3/4	20	19	19
D-750-G15	121-1/4	29-3/4	22-3/4	12-5/8	5-3/4	4-1/2	6-3/4	20	19	19
D-500-G18	126-1/4	29-5/8	30	11-1/2	7-3/8	4-1/2	6-3/4	23-1/2	17-1/2	17-1/2
D-750-G18	126-1/4	29-5/8	30	11-1/2	7-3/8	4-1/2	6-3/4	23-1/2	17-1/2	17-1/2
D-1000-G18	126-1/4	29-5/8	30	11-1/2	7-3/8	4-1/2	6-3/4	23-1/2	17-1/2	17-1/2
D-1500-920	169-1/2	36-3/4	34	12-1/2	7-3/8	4-1/2	6-3/4	28-7/8	17-1/2	17-1/2



MODEL	BURNER BTU RANGE (MBH)		GAS PRESSURE		GAS CONNECTION		TONNAGE RANGE	
	MIN	MAX	MIN	MAX	1" NPT	MIN	MAX	
D-250-G10	6"	18	7" WC	14" WC	3/4"	2 Ton	5 Ton	
D-500-G10	12"	18	7" WC	14" WC	3/4"	2 Ton	5 Ton	
D-750-G15	6"	18	7" WC	14" WC	3/4"	2 Ton	5 Ton	
D-300-G15	12"	18	7" WC	14" WC	3/4"	2 Ton	5 Ton	
D-750-G15	12"	18	7" WC	14" WC	3/4"	2 Ton	5 Ton	
D-500-G18	18"	27.5	7" WC	14" WC	1"	5 Ton	10 Ton	
D-750-G18	18"	27.5	7" WC	14" WC	1"	5 Ton	10 Ton	
D-1000-G18	24"	36.6	7" WC	14" WC	1"	10 Ton	10 Ton	
D-1500-920	24"	36.6	7" WC	14" WC	1-1/4"	10 Ton	10 Ton	
D-1500-920	30"	45.8	5" WC	5" WC	1-1/4"	10 Ton	10 Ton	

MODEL	CELDEK EVAPORATIVE COOLING UNIT									
	TOT. WEIGHT	MEDIA SIZE & QTY	NOZZLES	MAX. FLOW RATE						
D-250-G10	114.5 LBS	25" x 32" x 12"	20	6.5 GPH						
D-500-G10	115.0 LBS	25" x 32" x 12"	20	6.5 GPH						
D-750-G15	152.5 LBS	30" x 36" x 12"	28	8.4 GPH						
D-300-G15	153.0 LBS	30" x 36" x 12"	28	8.4 GPH						
D-750-G15	153.5 LBS	30" x 36" x 12"	28	8.4 GPH						
D-500-G18	189.5 LBS	38" x 43" x 12"	35	10.15 GPH						
D-750-G18	190.0 LBS	38" x 43" x 12"	35	10.15 GPH						
D-1000-G18	190.5 LBS	38" x 43" x 12"	35	10.15 GPH						
D-1500-920	279.5 LBS	45" x 54" x 12"	42	12.6 GPH						
D-1500-920	281.0 LBS	45" x 54" x 12"	42	12.6 GPH						

MODEL	INTAKE HOOD									
	FILTER SIZE & QTY	WATER INLET	DRAIN OPENING							
D-250-G10	20" x 25" x 2" (3)	1-1/2"	6-1/4"							
D-500-G10	20" x 25" x 2" (3)	1-1/2"	6-1/4"							
D-750-G15	20" x 25" x 2" (3)	1-1/2"	6-1/4"							
D-300-G15	20" x 25" x 2" (3)	1-1/2"	6-1/4"							
D-750-G15	20" x 25" x 2" (3)	1-1/2"	6-1/4"							
D-500-G18	16" x 20" x 2" (6)	1-1/2"	6-1/4"							
D-750-G18	16" x 20" x 2" (6)	1-1/2"	6-1/4"							
D-1000-G18	16" x 20" x 2" (6)	1-1/2"	6-1/4"							
D-1500-920	20" x 25" x 2" (8)	1-1/2"	6-1/4"							

Direct Fired Profile Plate Specifications:
 The burner shall have a patented US Patent No. US6499932, self-modulating profile plates designed to ensure proper air velocity and pressure drop across the burner. Profile plates shall allow burners to achieve clean combustion by lifting by-product levels to a minimum of 50ppm of carbon monoxide (CO), and 50ppm of nitrogen dioxide (NO2).
 Spring-loaded burner profile plates are engineered to automatically react to the momentum of a fresh air stream, without the need for any motors or actuators to mechanically adjust the burner. This feature, all DF units are designed for demand control ventilation (DCV) requirements.
 Applications:
 All profile plate assemblies shall be included in the DF unit's FL, listing and comply with combine NFPA 96, ANSI Z93.4 and CSA 317 flame-retarding calculating DF heaters, and ANSI Z93.8 (re-circulating DF heaters).
 General Construction:
 Profile plates shall be formed from G90 galvanized steel.
 Profile plates shall vary in size per unit.
 Profile plates shall be mounted along the same plane as the discharge of the burner.
 Design shall incorporate properly torqued, permanently mounted spring hinges.