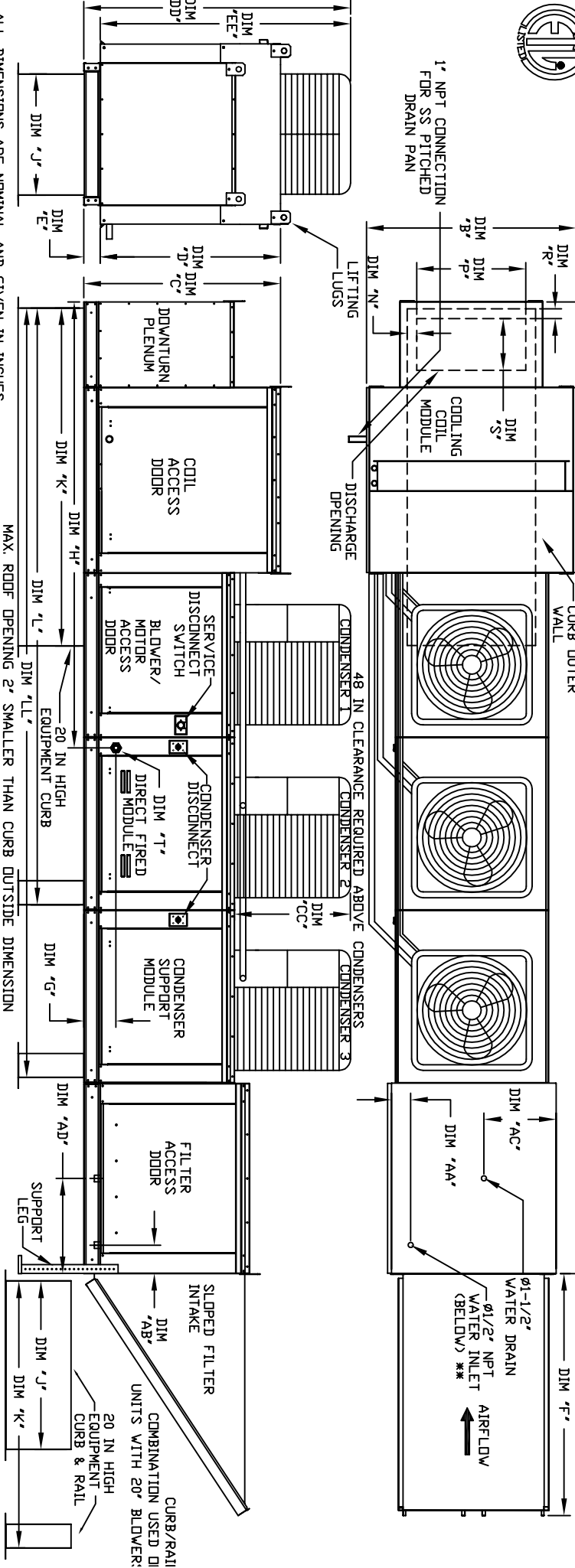




MODULAR OUTDOOR DOWN DISCHARGE DIRECT FIRED HEATER PACKAGED UNIT WITH COOLING, LPD EVAPORATIVE COOLER INTAKE AND INTAKE HOOD

THE PREFERRED MODEL IS
REV# 06/15/2015



ALL DIMENSIONS ARE NOMINAL AND GIVEN IN INCHES.

MAX. ROOF OPENING 2' SMALLER THAN CURB OUTSIDE DIMENSION

MODEL	UNIT DIMENSIONS										CURB/RAIL	DISCHARGE OPENING												
	A	B	C	D	E	F	G	H	I	J		K	L	M	N	P	Q	R	S	AA	AB	AC	AD	
D1500-G18	231-5/8	54-3/8	56-3/8	51-1/8	5-1/4	76-3/8	9-1/2	114-7/16	35	84	150-5/8	192-7/8	3-9/16	13-7/8	1-13/16	11-1/2	4-1/2	5-3/4	23-1/2	17-1/2	16-x20-x2" (D)			
D1750-G18	231-5/8	54-3/8	56-3/8	51-1/8	5-1/4	76-3/8	9-1/2	114-7/16	35	84	150-5/8	192-7/8	3-9/16	13-7/8	1-13/16	11-1/2	4-1/2	5-3/4	23-1/2	17-1/2	16-x20-x2" (D)			
D1000-G18	231-5/8	54-3/8	56-3/8	51-1/8	5-1/4	76-3/8	9-1/2	114-7/16	35	84	150-5/8	192-7/8	3-9/16	13-7/8	1-13/16	11-1/2	4-1/2	5-3/4	23-1/2	17-1/2	16-x20-x2" (D)			
D1000-920	292-7/8	60-7/16	64-3/8	59-1/8	5-1/4	71-3/8	13-9/16	151	42	115-3/16	199-7/8	254-1/8	5-1/4	31-1/2	1-13/16	4-1/2	5-3/4	28-7/8	17-1/2	16-x20-x2" (D)				
D1500-920	292-7/8	60-7/16	64-3/8	59-1/8	5-1/4	71-3/8	13-9/16	151	42	115-3/16	199-7/8	254-1/8	5-1/4	31-1/2	1-13/16	4-1/2	5-3/4	28-7/8	17-1/2	20-x25-x2" (B)				

MODEL	CONDENSER INFORMATION			TONNAGE RANGE		
	WEIGHT#	#1	#2	MIN	MAX	EE
D1500-G18	12"	18	855	7" VC	14" VC	15 Ton 15 Ton
D1750-G18	18"	27.5	1250	7" VC	14" VC	15 Ton 15 Ton
D1000-G18	24"	36.6	1100	7" VC	14" VC	15 Ton 15 Ton
D1000-920	24"	36.6	1100	7" VC	14" VC	15 Ton 15 Ton
D1500-920	30"	45.8	1375	7" VC	14" VC	15 Ton 15 Ton

MODEL	CONDENSER INFORMATION			TONNAGE RANGE		
	WEIGHT#	#1	#2	MIN	MAX	EE
D1500-G18	12"	18	855	7" VC	14" VC	15 Ton 15 Ton
D1750-G18	18"	27.5	1250	7" VC	14" VC	15 Ton 15 Ton
D1000-G18	24"	36.6	1100	7" VC	14" VC	15 Ton 15 Ton
D1000-920	24"	36.6	1100	7" VC	14" VC	15 Ton 15 Ton
D1500-920	30"	45.8	1375	7" VC	14" VC	15 Ton 15 Ton

UNIT INFORMATION

BURNER BTU RANGE (GPH) GAS PRESSURE GAS CONNECTION TONNAGE RANGE

CONDENSER INFORMATION

TONNAGE RANGE

CELDEK EVAPORATIVE COOLING UNIT

TOT. WEIGHT MEDIA SIZE & QTY NOZZLES MAX. FLOW RATE

2035 LBS 38"x43"x12" 35 10.15 GPH

2040 LBS 38"x43"x12" 35 10.15 GPH

2045 LBS 38"x43"x12" 35 10.15 GPH

2985 LBS 45"x54"x12" 42 12.6 GPH

3000 LBS 45"x54"x12" 42 12.6 GPH

Direct Fired Profile Plate Specifications:

Direct fired burners shall have patented (US Patent No. US6693333B2), self-adjusting profile plates designed to ensure proper air velocity and pressure drop across the burner. Profile plates shall be mounted along the same plane as the discharge of the burner. Profile plates shall incorporate properly torqued, permanently mounted spring fingers. Spring fingers shall be made from divised steel.

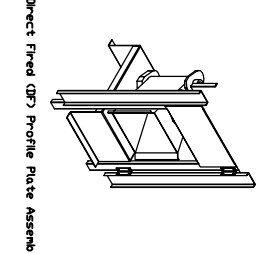
General Construction:

Profile plates shall vary in size per unit.

Profile plates shall be mounted along the same plane as the discharge of the burner.

Spring fingers shall incorporate properly torqued, permanently mounted spring fingers.

Spring fingers shall be made from divised steel.



Direct Fired (DF) Profile Plate Assm