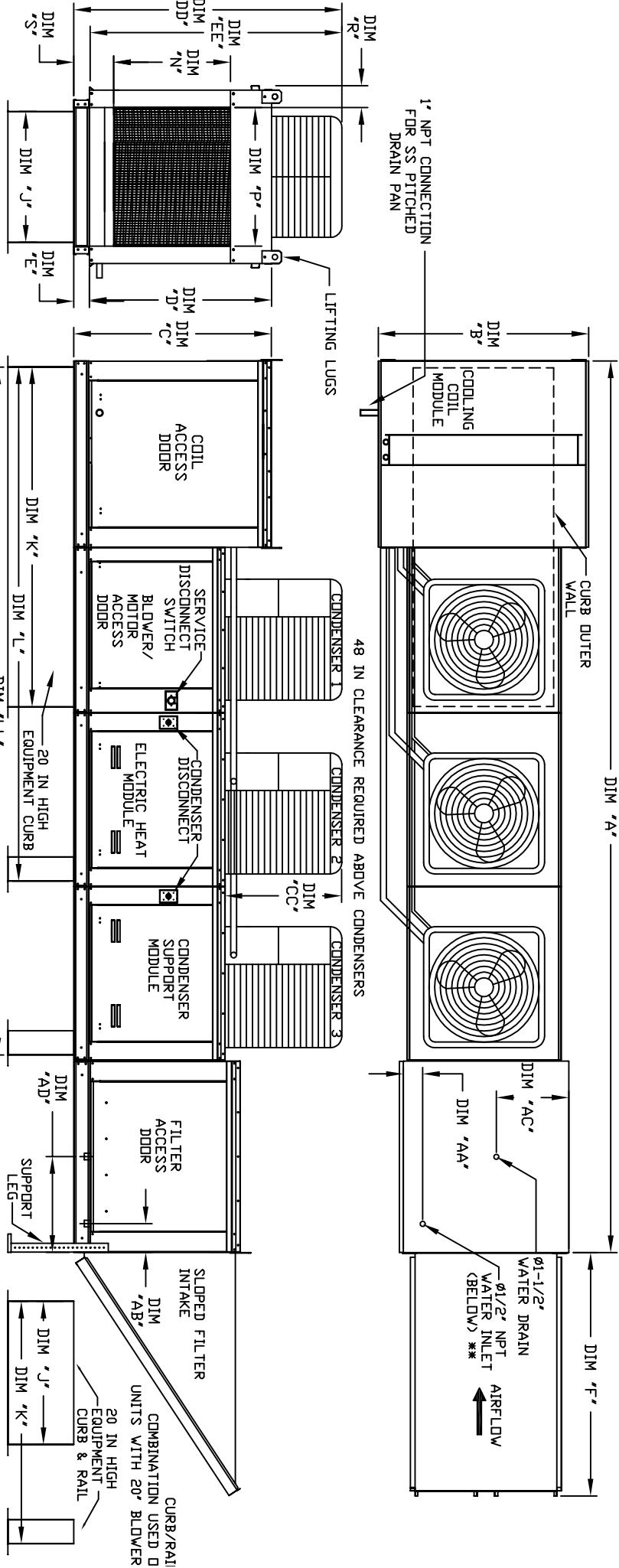


MODULAR OUTDOOR SIDE DISCHARGE ELECTRIC HEATER PACKAGED UNIT WITH COOLING, LPD EVAPORATIVE COOLER INTAKE AND INTAKE HOOD

JH.PERCENSMC-HPU-15  
REV.02 06/15/2015



ALL DIMENSIONS ARE NOMINAL AND GIVEN IN INCHES.

MODEL	A	B	C	D	E	F	J	K	L	LL	N	R	S	AA	AB	AC	AD	AE	
E3-G18	207-1/4	54-3/8	56-3/8	51-1/8	5-1/4	76-3/8	35	84	126-1/4	168-1/2	29-5/8	30	11-1/2	7-3/8	4-1/2	5-3/4	23-1/2	17-1/2	16"x20"x2" (10)
E4-920	262-1/2	60-7/16	64-3/8	59-1/8	5-1/4	71-3/8	42	115-3/16	169-7/16	223-3/4	36-3/4	34	12-1/2	7-3/8	4-1/2	5-3/4	28-7/8	17-1/2	20"x25"x2" (8)

UNIT INFORMATION

MODEL	TONNAGE RANGE	TOT. WEIGHT	MEDIA SIZE & QTY	VEL. @ MAX. CFM(INCH)ZLES	MAX. FLOW RATE
E3-G18	15 Ton	15 Ton	38"x43"x12"	705 FPM	35
E4-920	15 Ton	15 Ton	45"x54"x12"	770 FPM	42

CELUDEK EVAPORATIVE COOLING UNIT  
 \*\*ADD CONDENSING UNIT WEIGHT TO WEIGHT IN TABLE ABOVE  
 \*\* MAX EVAP WATER PRESSURE = 50 PSI @ 70 DEG F

CONDENSER INFORMATION

MODEL	WEIGHT*	#1	#2	#3	CC	DD	EE
15 TON-G18/591	5 TON	5 TON	5 TON	5 TON	32-13/16	76-3/16	70-7/8
15 TON-920/591	5 TON	5 TON	5 TON	5 TON	32-13/16	97-3/16	91-5/16

\*MAX. WEIGHT PER UNIT