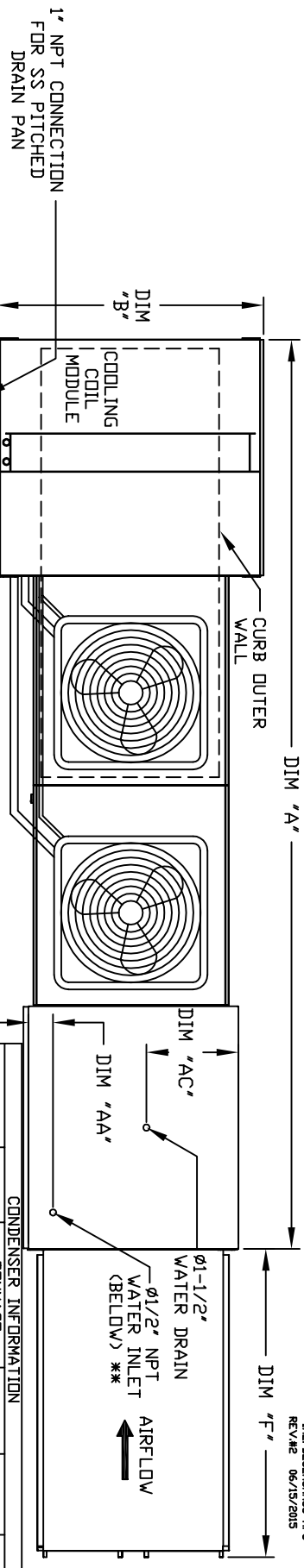


MODULAR OUTDOOR SIDE DISCHARGE ELECTRIC HEATER PACKAGED UNIT WITH COOLING, LPD EVAPORATIVE COOLER AND INTAKE HOOD

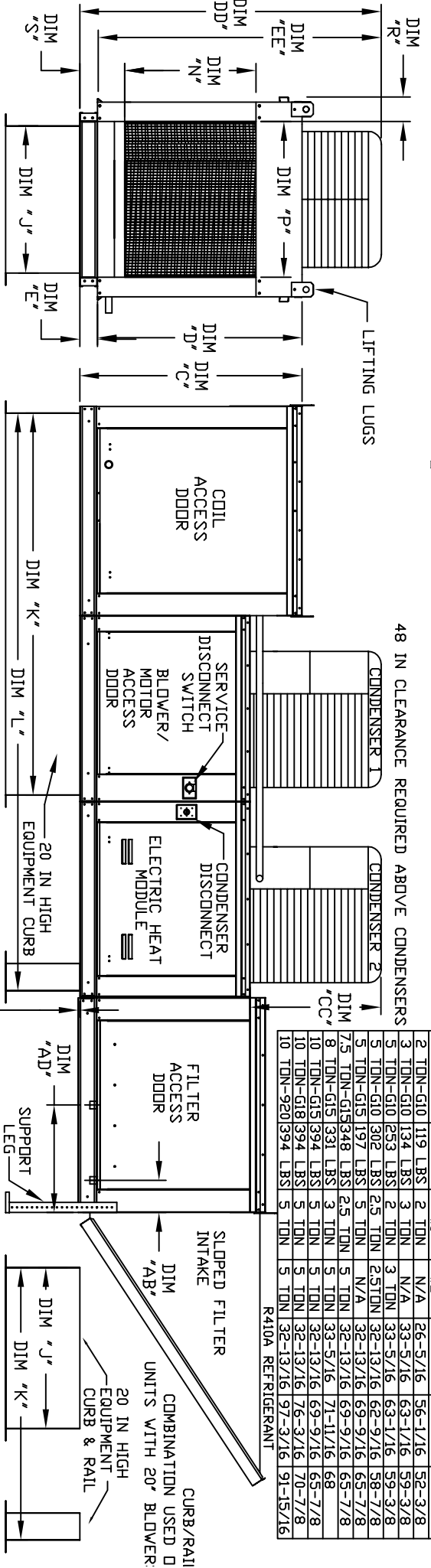
THE PAPERWORK GROUP  
REV. #2 06/15/2015



48 IN CLEARANCE REQUIRED ABOVE CONDENSERS

CONDENSER INFORMATION		CC	DD	EE
MODEL	WEIGHT*	#1	#2	
2 TON-G10	119 LBS	2 TON	N/A	26-5/16
3 TON-G10	134 LBS	3 TON	N/A	56-1/16
5 TON-G10	253 LBS	3 TON	N/A	59-3/8
5 TON-G10	253 LBS	2 TON	N/A	59-3/8
5 TON-G10	302 LBS	2.5 TON	32-13/16	62-9/16
5 TON-G15	197 LBS	5 TON	N/A	58-7/8
7.5 TON-G15	348 LBS	2.5 TON	32-13/16	65-7/8
8 TON-G15	331 LBS	3 TON	33-5/16	71-11/16
10 TON-G15	394 LBS	5 TON	32-13/16	69-9/16
10 TON-G18	384 LBS	5 TON	32-13/16	76-3/16
10 TON-G20	394 LBS	5 TON	32-13/16	97-3/16
		5 TON	32-13/16	91-5/16

R410A REFRIGERANT



ALL DIMENSIONS ARE NOMINAL AND GIVEN IN INCHES.

MODEL	UNIT DIMENSIONS										CURB/RAIL	DISCHARGE OPENING										WATER INLET				DRAIN OPENING				INTAKE FILTER SIZE & QTY				MAX. FILTER VELOCITY																																																																																																																																																																																																																																																																																																																																																																																																																																																																																																																																																																																																																																																																												
	A	B	C	D	E	F	J	K	L	N		P	R	S	AA	AB	AC	AD	AE	AF	AG	AH	AI	AJ	AK	AL	AM	AN	AO	AP	AQ	AR	AS		AT	AV	AW	AX	AY	AZ	BA	BB	BC	BD	BE	BF	BG	BH	BI	BJ	BK	BL	BM	BN	BO	BP	BQ	BR	BS	BT	BU	BV	BW	BX	BY	BZ	CA	CB	CC	CD	CE	CF	CG	CH	CI	CJ	CK	CL	CM	CN	CO	CP	CQ	CR	CS	CT	CU	CV	CW	CX	CY	CZ	DA	DB	DC	DD	DE	DF	DG	DH	DI	DJ	DK	DL	DM	DN	DO	DP	DQ	DR	DS	DT	DU	DV	DW	DX	DY	DZ	EA	EB	EC	ED	EE	EF	EG	EH	EI	EJ	EK	EL	EM	EN	EO	EP	EQ	ER	ES	ET	EU	EV	EW	EX	EY	EZ	FA	FB	FC	FD	FE	FF	FG	FH	FI	FJ	FK	FL	FM	FN	FO	FP	FQ	FR	FS	FT	FU	FV	FW	FX	FY	FZ	GA	GB	GC	GD	GE	GF	GG	GH	GI	GJ	GK	GL	GM	GN	GO	GP	GQ	GR	GS	GT	GU	GV	GW	GX	GY	GZ	HA	HB	HC	HD	HE	HF	HG	HH	HI	HJ	HK	HL	HM	HN	HO	HP	HQ	HR	HS	HT	HU	HV	HW	HX	HY	HZ	IA	IB	IC	ID	IE	IF	IG	IH	II	IJ	IK	IL	IM	IN	IO	IP	IQ	IR	IS	IT	IU	IV	IW	IX	IY	IZ	JA	JB	JC	JD	JE	JF	JG	JH	JI	JJ	JK	JL	JM	JN	JO	JP	JQ	JR	JS	JT	JU	JV	JW	JX	JY	JZ	KA	KB	KC	KD	KE	KF	KG	KH	KI	KJ	KL	KM	KN	KO	KP	KQ	KR	KS	KT	KU	KV	KW	KX	KY	KZ	LA	LB	LC	LD	LE	LF	LG	LH	LI	LJ	LK	LL	LM	LN	LO	LP	LQ	LR	LS	LT	LU	LV	LW	LX	LY	LZ	MA	MB	MC	MD	ME	MF	MG	MH	MI	MJ	MK	ML	MM	MN	MO	MP	MQ	MR	MS	MT	MU	MV	MW	MX	MY	MZ	NA	NB	NC	ND	NE	NF	NG	NH	NI	NJ	NK	NL	NM	NN	NO	NP	NQ	NR	NS	NT	NU	NV	NW	NX	NY	NZ	OA	OB	OC	OD	OE	OF	OG	OH	OI	OJ	OK	OL	OM	ON	OO	OP	OQ	OR	OS	OT	OU	OV	OW	OX	OY	OZ	PA	PB	PC	PD	PE	PF	PG	PH	PI	PJ	PK	PL	PM	PN	PO	PP	PQ	PR	PS	PT	PU	PV	PW	PX	PY	PZ	QA	QB	QC	QD	QE	QF	QG	QH	QI	QJ	QK	QL	QM	QN	QO	QP	QQ	QR	QS	QT	QU	QV	QW	QX	QY	QZ	RA	RB	RC	RD	RE	RF	RG	RH	RI	RJ	RK	RL	RM	RN	RO	RP	RQ	RR	RS	RT	RU	RV	RW	RX	RY	RZ	SA	SB	SC	SD	SE	SF	SG	SH	SI	SJ	SK	SL	SM	SN	SO	SP	SQ	SR	SS	ST	SU	SV	SW	SX	SY	SZ	TA	TB	TC	TD	TE	TF	TG	TH	TI	TJ	TK	TL	TM	TN	TO	TP	TQ	TR	TS	TT	TU	TV	TW	TX	TY	TZ	UA	UB	UC	UD	UE	UF	UG	UH	UI	UJ	UK	UL	UM	UN	UO	UP	UQ	UR	US	UT	UU	UV	UW	UX	UY	UZ	VA	VB	VC	VD	VE	VF	VG	VH	VI	VJ	VK	VL	VM	VN	VO	VP	VQ	VR	VS	VT	VU	VV	VW	VX	VY	VZ	WA	WB	WC	WD	WE	WF	WG	WH	WI	WJ	WK	WL	WM	WN	WO	WP	WQ	WR	WS	WT	WU	WV	WW	WX	WY	WZ	XA	XB	XC	XD	XE	XF	XG	XH	XI	XJ	XK	XL	XM	XN	XO	XP	XQ	XR	XS	XT	XU	XV	XW	XX	XY	XZ	YA	YB	YC	YD	YE	YF	YG	YH	YI	YJ	YK	YL	YM	YN	YO	YP	YQ	YR	YS	YT	YU	YV	YW	YX	YY	YZ	ZA	ZB	ZC	ZD	ZE	ZF	ZG	ZH	ZI	ZJ	ZK	ZL	ZM	ZN	ZO	ZP	ZQ	ZR	ZS	ZT	ZU	ZV	ZW
E1-G10	148-7/8	39-3/8	42-3/4	39	3-3/4	53-5/8	21	71	113-1/4	17-1/2	16	11	5-3/4	4-1/2	6-1/4	18	16	20	20"x25"x2" (3)	3600 CFM = 417 FPM																																																																																																																																																																																																																																																																																																																																																																																																																																																																																																																																																																																																																																																																																										
E2-G15	162-7/8	49-3/8	47-3/4	44	3-3/4	51-5/8	31	79	121-1/4	29-3/4	22-3/4	12-5/8	5-3/4	4-1/2	5-3/4	20	19	16	16"x20"x2" (6)	6500 CFM = 619 FPM																																																																																																																																																																																																																																																																																																																																																																																																																																																																																																																																																																																																																																																																																										
E3-G18	165	54-3/8	56-3/8	51-1/8	5-1/4	76-3/8	35	84	126-1/4	29-5/8	30	11-1/2	7-3/8	4-1/2	5-3/4	23-1/2	17-1/2	17	16"x20"x2" (10)	8000 CFM = 457 FPM																																																																																																																																																																																																																																																																																																																																																																																																																																																																																																																																																																																																																																																																																										
E4-920	208-3/16	160-7/16	64-3/8	59-1/8	5-1/4	71-3/8	42	115-3/16	169-7/16	36-3/4	34	12-1/2	7-3/8	4-1/2	5-3/4	28-7/8	17-1/2	17	20"x25"x2" (8)	13000 CFM = 565 FPM																																																																																																																																																																																																																																																																																																																																																																																																																																																																																																																																																																																																																																																																																										

UNIT INFORMATION

MODEL	TONNAGE RANGE		CELDEK EVAPORATIVE COOLING UNIT	
	MIN	MAX	TOT. WEIGHT	MAX. FLOW RATE
E1-G10	2 Ton	5 Ton	1100 LBS	6.5 GPH
E2-G15	5 Ton	10 Ton	1490 LBS	8.4 GPH
E3-G18	10 Ton	10 Ton	1900 LBS	10.15 GPH
E4-920	10 Ton	10 Ton	2815 LBS	12.6 GPH

\*\*ADD CONDENSING UNIT WEIGHT TO WEIGHT IN TABLE ABOVE

\*\*\* MAX EVAP WATER PRESSURE = 50 PSI @ 70 DEG. F

MAX CONDENSING UNIT WEIGHT TO WEIGHT IN TABLE ABOVE