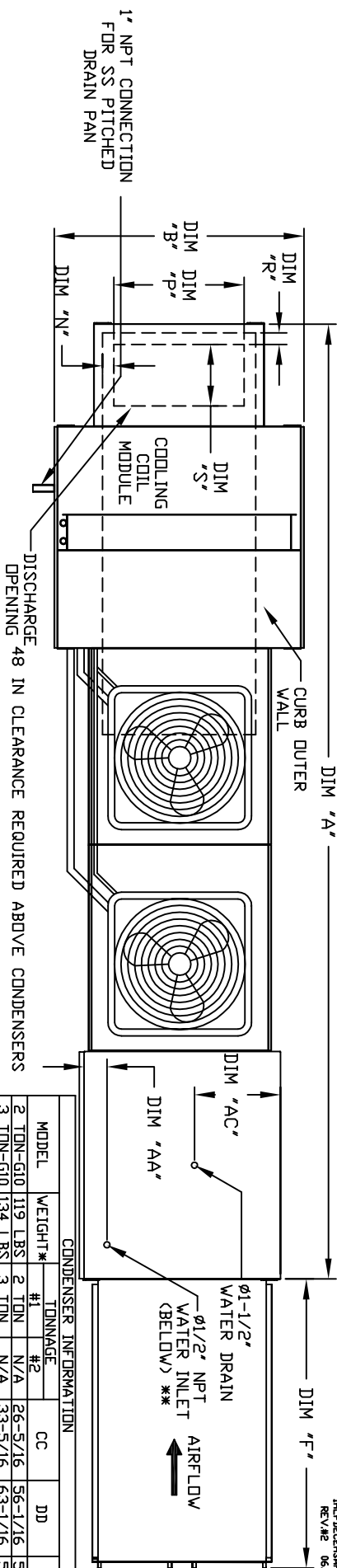


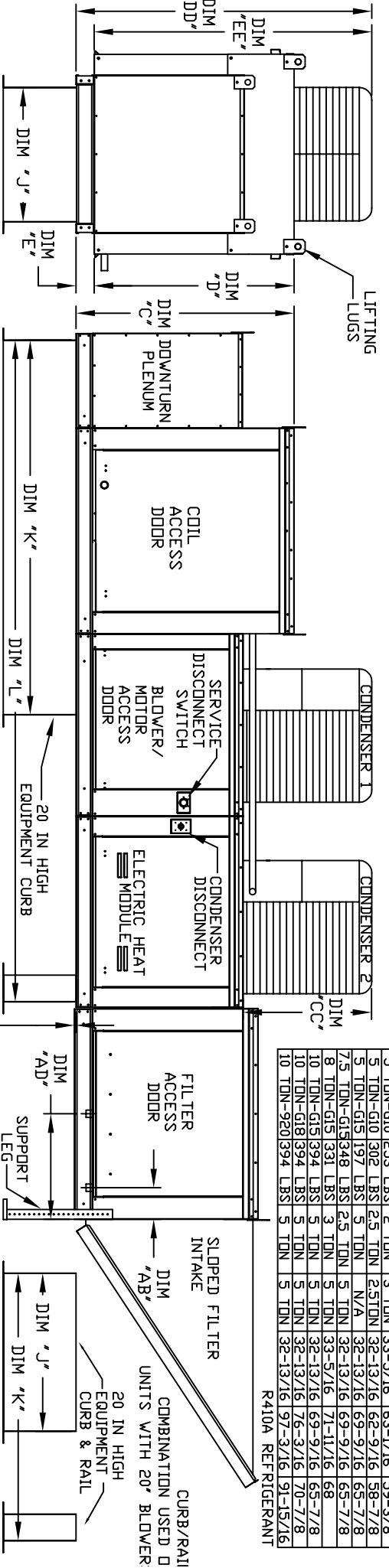
MODULAR OUTDOOR DOWN DISCHARGE ELECTRIC HEATER PACKAGED UNIT WITH COOLING, LPD EVAPORATIVE COOLER INTAKE AND INTAKE HOOD

THE PREFERRED UNIT  
REV.#2 06/15/2015



MODEL	WEIGHT*	TONNAGE	CC	DD	EE
2 TON-G10 119 LBS	26-5/16	N/A	56-1/16	52-3/8	
3 TON-G10 134 LBS	33-5/16	N/A	63-1/16	59-3/8	
5 TON-G10 253 LBS	2 TON	3 TON	33-5/16	63-1/16	59-3/8
5 TON-G10 302 LBS	2.5 TON	2.5 TON	32-13/16	62-9/16	58-7/8
5 TON-G15 197 LBS	5 TON	N/A	32-13/16	69-9/16	65-7/8
7.5 TON-G15 348 LBS	2.5 TON	5 TON	32-13/16	69-9/16	65-7/8
8 TON-G15 331 LBS	3 TON	5 TON	33-5/16	71-11/16	68
10 TON-G15 394 LBS	5 TON	5 TON	32-13/16	69-9/16	65-7/8
10 TON-G18 394 LBS	5 TON	5 TON	32-13/16	76-3/16	70-7/8
10 TON-G20 394 LBS	5 TON	5 TON	32-13/16	97-3/16	91-5/16

R410A REFRIGERANT



ALL DIMENSIONS ARE NOMINAL AND GIVEN IN INCHES.

MAX. ROOF OPENING 2" SMALLER THAN CURB OUTSIDE DIMENSION

1-1/2" ON E2 UNITS ONLY

MODEL	TONNAGE RANGE		CELDEK EVAPORATIVE COOLING UNIT																	
	MIN	MAX	TOT. WEIGHT	MEDIA SIZE & QTY	VEL. @ MAX. CFM	NOZZLES	MAX. FLOW RATE	CURB/RAIL						DISCHARGE OPENING		WATER INLET	DRAIN OPENING	INTAKE FILTER SIZE & QTY	MAX. FILTER VELOCITY	
A	B	C	D	E	F	J	K	L	N	P	R	S	AA	AB	AC	AD	(3)	(6)	(8)	
E1-G10	167-1/4	39-3/8	42-3/4	39	3-3/4	53-5/8	21	71	131-5/8	3-9/16	13-7/8	1-13/16	11-1/2	4-1/2	6-1/4	18	20"x25"x2"	(3)	3600 CFM = 417 FPM	
E2-G15	187-1/4	49-3/8	47-3/4	44	3-3/4	51-5/8	31	79	145-5/8	4-5/16	12-3/8	1-9/16	18	4-1/2	5-3/4	20	16"x20"x2"	(6)	6500 CFM = 619 FPM	
E3-G18	189-3/8	54-3/8	56-3/8	51-1/8	5-1/4	76-3/8	35	84	150-5/8	6-5/16	12-3/8	1-1/2	18	4-1/2	5-3/4	23-1/2	17-1/2	16"x20"x2"	(10)	8000 CFM = 457 FPM
E4-G20	238-9/16	60-7/16	64-3/8	59-1/8	5-1/4	71-3/8	42	115-3/16	199-13/16	5-1/4	13-1/2	23-1/2	4-1/2	5-3/4	28-7/8	17-1/2	20"x25"x2"	(8)	13000 CFM = 565 FPM	

UNIT INFORMATION:

MODEL	TONNAGE RANGE	TOT. WEIGHT	MEDIA SIZE & QTY	VEL. @ MAX. CFM	NOZZLES	MAX. FLOW RATE
E1-G10	2 Ton	5 Ton	1180 LBS	25"x32"x12"	648 FPM	20
E2-G15	5 Ton	10 Ton	1605 LBS	30"x36"x12"	867 FPM	28
E3-G18	10 Ton	10 Ton	2040 LBS	38"x43"x12"	705 FPM	35
E4-G20	10 Ton	10 Ton	3005 LBS	45"x54"x12"	770 FPM	42

\*ADD CONDENSING UNIT WEIGHT TO WEIGHT IN TABLE ABOVE