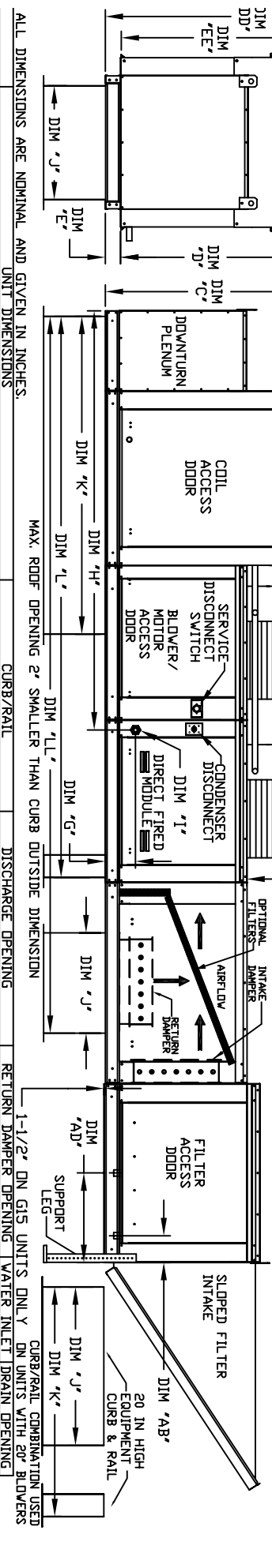


MODEL	WEIGHT #	#1 TONNAGE	#2 TONNAGE	CC	DD	EE
2 TON-G10	119 LBS	2 TON	N/A	26-5/16	56-1/16	52-3/8
3 TON-G10	134 LBS	3 TON	N/A	33-5/16	63-1/16	59-3/8
4 TON-G10	153 LBS	4 TON	N/A	33-9/16	63-1/16	59-3/8
5 TON-G10	197 LBS	5 TON	N/A	32-13/16	62-9/16	58-7/8
6 TON-G10	253 LBS	6 TON	N/A	32-13/16	62-9/16	58-7/8
7.5 TON-G15	348 LBS	7.5 TON	5 TON	32-13/16	65-9/16	61-1/8
8 TON-G15	331 LBS	8 TON	5 TON	33-5/16	71-11/16	68
10 TON-G15	394 LBS	10 TON	5 TON	32-13/16	69-9/16	65-7/8
10 TON-G18	394 LBS	10 TON	5 TON	32-13/16	76-3/16	70-7/8
10 TON-G20	394 LBS	10 TON	5 TON	32-13/16	97-3/16	91-15/16



ALL DIMENSIONS ARE NOMINAL AND GIVEN IN INCHES.

MAX. ROOF OPENING 2" SMALLER THAN CURB OUTSIDE DIMENSION

48 IN CLEARANCE REQUIRED ABOVE CONDENSERS

1-1/2" ON G15 UNITS ONLY ON UNITS WITH 20" BLOWERS

CURB/RAIL COMBINATION USED ON UNITS WITH 20" BLOWERS

MODEL	A	B	C	D	E	F	G	H	J	K	L	M	N	P	R	S	T	U	V	X	AA	AB	AC	AD	
D1250-G10	209-1/2	39-3/8	48-3/4	39	3-3/4	53-5/8	7-13/16	95-7/16	21	71	131-5/8	163-1/16	3-9/16	613-7/8	1-13/16	11-1/2	14	8	14	12-1/2	18	4-1/2	6-1/4	18	16
D1500-G10	209-1/2	39-3/8	48-3/4	39	3-3/4	53-5/8	7-13/16	95-7/16	21	71	131-5/8	163-1/16	3-9/16	613-7/8	1-13/16	11-1/2	14	8	14	12-1/2	18	4-1/2	6-1/4	18	16
D1250-G15	229-1/2	49-3/8	47-3/4	44	3-3/4	51-5/8	7-13/16	109-7/16	31	79	149-3/8	182-1/16	4-5/16	622-3/8	1-9/16	18	22-3/4	8	11	7-1/2	24	4-1/2	5-3/4	20	19
D1500-G15	229-1/2	49-3/8	47-3/4	44	3-3/4	51-5/8	7-13/16	109-7/16	31	79	149-3/8	182-1/16	4-5/16	622-3/8	1-9/16	18	22-3/4	8	11	7-1/2	24	4-1/2	5-3/4	20	19
D1750-G18	231-5/8	54-3/8	56-3/8	44	3-3/4	51-5/8	5-1/4	76-3/8	35	84	150-5/8	190-1/16	6-5/16	622-3/8	1-1/2	18	28	8	7	4-1/2	30	4-1/2	5-3/4	23-1/2	17-1/2
D1500-G18	231-5/8	54-3/8	56-3/8	44	3-3/4	51-5/8	5-1/4	76-3/8	35	84	150-5/8	190-1/16	6-5/16	622-3/8	1-1/2	18	28	8	7	4-1/2	30	4-1/2	5-3/4	23-1/2	17-1/2
D1000-G18	231-5/8	54-3/8	56-3/8	44	3-3/4	51-5/8	5-1/4	76-3/8	35	84	150-5/8	190-1/16	6-5/16	622-3/8	1-1/2	18	28	8	7	4-1/2	30	4-1/2	5-3/4	23-1/2	17-1/2
D1000-G20	292-7/8	60-7/16	64-3/8	59-1/4	7-13/16	81-1/4	13-9/16	151	42	115-3/16	199-7/8	247-7/8	5-1/4	31-1/2	1-13/16	23-1/2	33	10	11	8	36	4-1/2	5-3/4	28-7/8	17-1/2
D1500-G20	292-7/8	60-7/16	64-3/8	59-1/4	7-13/16	81-1/4	13-9/16	151	42	115-3/16	199-7/8	247-7/8	5-1/4	31-1/2	1-13/16	23-1/2	33	10	11	8	36	4-1/2	5-3/4	28-7/8	17-1/2

MODEL	BURNER LENGTH	BTU RANGE LOW	BTU HIGH	GAS PRESSURE MIN	GAS PRESSURE MAX	GAS CONNECTION	TONNAGE RANGE MIN	TONNAGE RANGE MAX
D1250-G10	6"	18	275	7" WC	14" WC	3/4"	2 Ton	5 Ton
D1500-G10	6"	18	275	7" WC	14" WC	3/4"	2 Ton	5 Ton
D1250-G15	6"	18	275	7" WC	14" WC	3/4"	2 Ton	5 Ton
D1500-G15	6"	18	275	7" WC	14" WC	3/4"	2 Ton	5 Ton
D1750-G18	18"	275	825	7" WC	14" WC	1"	5 Ton	10 Ton
D1500-G18	18"	275	825	7" WC	14" WC	1"	5 Ton	10 Ton
D1750-G18	18"	275	825	7" WC	14" WC	1"	5 Ton	10 Ton
D1500-G18	18"	275	825	7" WC	14" WC	1"	5 Ton	10 Ton
D1000-G18	24"	36.6	1100	7" WC	14" WC	1"	10 Ton	10 Ton
D1000-G20	24"	36.6	1100	7" WC	14" WC	1"	10 Ton	10 Ton
D1500-G20	30"	45.8	1375	7" WC	14" WC	1-1/4"	10 Ton	10 Ton

MODEL	CONDENSING UNIT WEIGHT	EVAPORATIVE COOLING UNIT WEIGHT	OPTIONAL MIXING BOX FILTERS	INTAKE HOOD
D1250-G10	1385 LBS	25"x32"x12"	10"x16"x2"	20"x25"x2"
D1500-G10	1385 LBS	25"x32"x12"	10"x16"x2"	20"x25"x2"
D1250-G15	1855 LBS	30"x36"x12"	15"x25"x2"	20"x25"x2"
D1500-G15	1855 LBS	30"x36"x12"	15"x25"x2"	20"x25"x2"
D1750-G18	1865 LBS	30"x36"x12"	15"x25"x2"	20"x25"x2"
D1500-G18	2303 LBS	38"x43"x12"	15"x20"x2"	16"x20"x2"
D1750-G18	2303 LBS	38"x43"x12"	15"x20"x2"	16"x20"x2"
D1000-G18	3460 LBS	45"x54"x12"	18"x25"x2"	20"x25"x2"
D1000-G20	3475 LBS	45"x54"x12"	18"x25"x2"	20"x25"x2"

Direct-Fired Profile Burner Specifications

Direct-fired burners shall have patented US Patent No. US6295282B2, self-adjusting profile plates designed to ensure proper air velocity and combustion by being by-products levels to a burner. Profile plates shall allow burners to achieve clean combustion by being by-products levels to a burner of 50ppm of carbon monoxide (CO), and 50ppm of nitrogen dioxide (NO2).

Direct-Fixed Profile Burner Specifications

Direct-fired burners shall have patented US Patent No. US6295282B2, self-adjusting profile plates designed to ensure proper air velocity and combustion by being by-products levels to a burner. Profile plates shall allow burners to achieve clean combustion by being by-products levels to a burner of 50ppm of carbon monoxide (CO), and 50ppm of nitrogen dioxide (NO2).

Section 23.0000 HVAC Equipment

23.10.0000 Heating, Ventilating, and Air Conditioning Equipment

23.10.10.0000 Heating Equipment

23.10.10.0010 Direct-Fired Burners

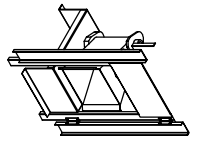
23.10.10.0010.0000 Direct-Fired Burners

23.10.10.0010.0000.0000 Direct-Fired Burner Profile Plates

Profile plates shall be formed from 600 galvanized steel.

Profile plates shall be mounted along the same slope as the discharge of the burner.

Profile plates shall incorporate proper torque, permanently mounted spring hinges.



Direct-Fired (DF) Profile Plate Assembly