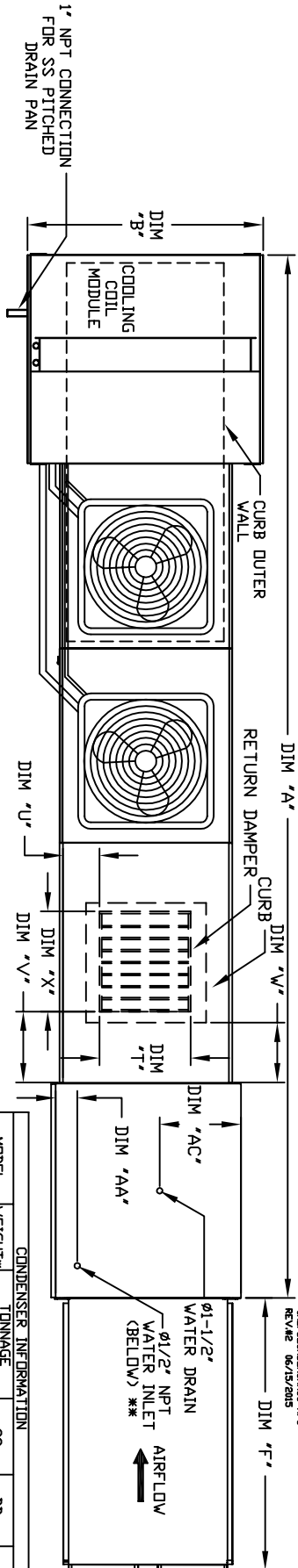
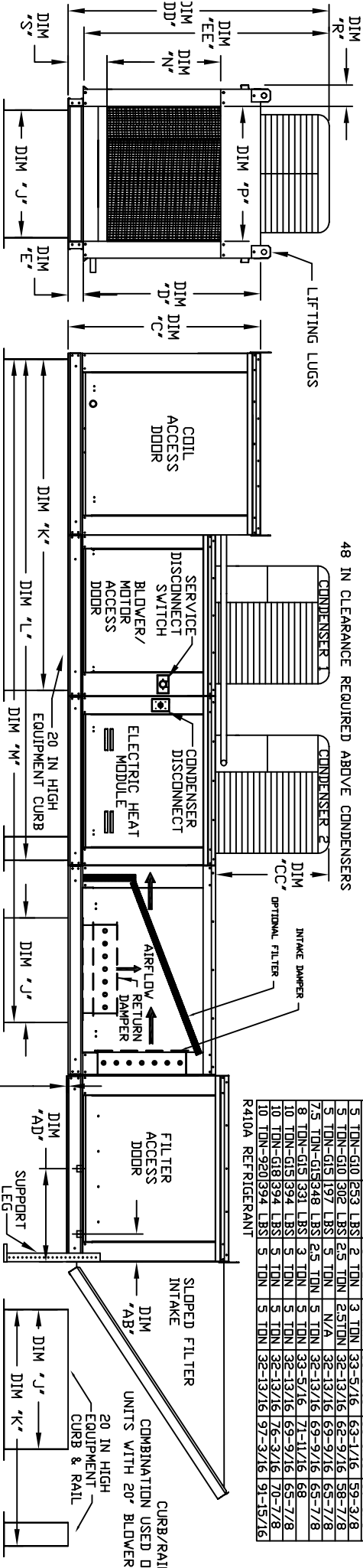


MODULAR OUTDOOR SIDE DISCHARGE ELECTRIC HEATER PACKAGED UNIT WITH COOLING, MIXING BOX, LPD EVAPORATIVE COOLER INTAKE AND INTAKE HOOD



HALFCOENR5AC-14PU
REV#2 06/15/2015

48 IN CLEARANCE REQUIRED ABOVE CONDENSERS



ALL DIMENSIONS ARE NOMINAL AND GIVEN IN INCHES.

MAX. ROOF OPENING 2" SMALLER THAN CURB OUTSIDE DIMENSION

1-1/2" DN E2 UNITS ONLY

MODEL	UNIT DIMENSIONS			CURB/RAIL			DISCHARGE OPENING			RETURN DAMPER OPENING			WATER INLET DRAIN OPENING			MAX. FILTER VELOCITY						
	A	B	C	D	E	F	J	K	L	M	N	P	R	S	T		U	V	AA	AB	AC	AD
E1-G10	191-1/8	39-3/8	42-3/4	39	3-3/4	53-5/8	21	71	113-1/4	144-11/16	17-1/2	16	11	5-3/4	14	8	14	12-1/2	6-1/4	18	19	83600 CFM = 417 FPM
E2-G15	205-1/8	49-3/8	47-3/4	44	3-3/4	51-5/8	31	79	121-1/4	157-11/16	29-3/4	22-3/4	12-5/8	5-3/4	22-3/4	8	11	7-1/2	24	4-1/2	20	16500 CFM = 619 FPM
E3-G18	207-1/4	54-3/8	56-3/8	51-1/8	5-1/4	76-3/8	35	84	126-1/4	165-11/16	29-5/8	30	11-1/2	7-3/8	28	8	7	4-1/2	30	4-1/2	20	16500 CFM = 457 FPM
E4-G20	266-1/2	60-7/16	64-3/8	64-3/8	5-1/4	71-3/8	42	115-3/16	169-1/2	217-7/16	36-3/4	34	12-1/2	7-3/8	33	10	11	8	36	4-1/2	20	81300 CFM = 565 FPM

MODEL	TONNAGE RANGE		CELDEK EVAPORATIVE COOLING UNIT			OPTIONAL MIXING BOX FILTERS		
	MIN	MAX	TOT. WEIGHT	MEDIA SIZE & QTY	VEL. @ MAX. CFM	NOZZLES	MAX. FLOW RATE	FILTER SIZE & QTY
E1-G10	2 Ton	5 Ton	1255 LBS	25"x32"x12"	648 FPM	20	6.5 GPH	10"x16"x2" (5)
E2-G15	5 Ton	10 Ton	1705 LBS	30"x36"x12"	867 FPM	28	8.4 GPH	20"x25"x2" (2), 16"x25"x2" (1)
E3-G18	10 Ton	10 Ton	2180 LBS	38"x43"x12"	705 FPM	35	10.15 GPH	15"x20"x2" (4), 15"x15"x2" (2)
E4-G20	10 Ton	10 Ton	3290 LBS	45"x54"x12"	770 FPM	42	12.6 GPH	18"x25"x2" (4), 16"x20"x2" (2)

CELDEK EVAPORATIVE COOLING UNIT

OPTIONAL MIXING BOX FILTERS

MAX. FILTER VELOCITY