

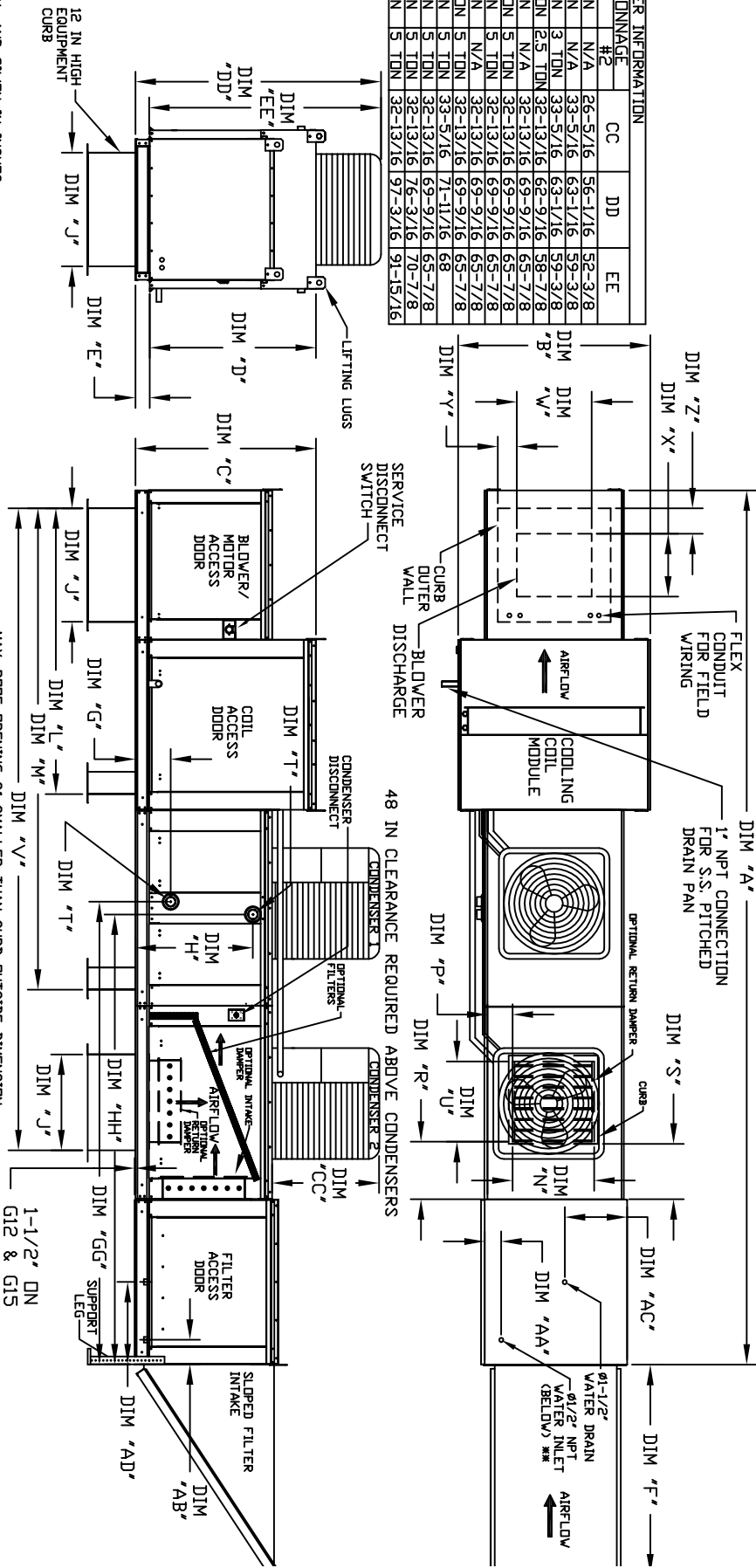


OUTDOOR DOWN DISCHARGE MOD PACKAGE UNIT, HEATING COIL, LPD EVAPORATIVE COOLER INTAKE, INTAKE HOOD AND OPTIONAL MIXING BOX

14.PS03030301-4P0
REV. 06/15/2015

CONDENSER INFORMATION

MODEL	WEIGHT #	TONNAGE	CC	DD	EE
2 TON-G10 119 LBS	2 TON	N/A	26-5/16	56-1/16	52-3/8
3 TON-G10 134 LBS	3 TON	N/A	33-5/16	63-1/16	59-3/8
3 TON-G10 253 LBS	2 TON	N/A	33-5/16	63-1/16	59-3/8
5 TON-G10 302 LBS	2.5 TON	N/A	32-13/16	62-9/16	58-7/8
5 TON-G12 197 LBS	5 TON	N/A	32-13/16	62-9/16	58-7/8
7.5 TON-G12 348 LBS	2.5 TON	N/A	32-13/16	62-9/16	58-7/8
10 TON-G12 394 LBS	5 TON	N/A	32-13/16	62-9/16	58-7/8
5 TON-G15 197 LBS	5 TON	N/A	32-13/16	62-9/16	58-7/8
7.5 TON-G15 302 LBS	2.5 TON	N/A	32-13/16	62-9/16	58-7/8
8 TON-G15 331 LBS	3 TON	N/A	33-9/16	69-9/16	65-7/8
10 TON-G15 394 LBS	5 TON	N/A	32-13/16	62-9/16	58-7/8
10 TON-G18 394 LBS	5 TON	N/A	32-13/16	62-9/16	58-7/8
10 TON-G20 394 LBS	5 TON	N/A	32-13/16	62-9/16	58-7/8



ALL DIMENSIONS ARE NOMINAL AND GIVEN IN INCHES.

MAX. ROOF OPENING 2" SMALLER THAN CURB OUTSIDE DIMENSION

1-1/2" ON G12 & G15 UNITS ONLY

UNIT DIMENSIONS

MODEL	A	B	C	D	E	F	G	H	I	J	K	L	M	N	P	R	S	U	V	W	X	Y	Z	AA	AB	AC	AD
G10	191-1/8	89-3/8	42-3/4	39	8-3/4	53-5/8	21	65-13/16	107-15/16	14	8	14	12-1/2	18	140-7/8	13-1/4	11-1/2	3-7/8	7-5/8	7-15/16	4-1/2	6-1/4	18	19	16	16	
G12	205-1/8	85-3/8	42-3/4	44	8-3/4	51-5/8	21	74-5/8	116-3/4	22-3/4	8	11	7-1/2	24	154-7/8	15-3/4	13-9/16	7-5/8	7-15/16	4-1/2	6-1/4	20	20	19	19		
G15	205-1/8	85-3/8	42-3/4	44	8-3/4	51-5/8	21	74-5/8	116-3/4	22-3/4	8	11	7-1/2	24	154-7/8	15-3/4	13-9/16	7-5/8	7-15/16	4-1/2	6-1/4	20	20	19	19		
G18	207-1/4	84-3/8	42-3/8	44	8-3/4	51-5/8	21	74-5/8	116-3/4	22-3/4	8	11	7-1/2	24	154-7/8	15-3/4	13-9/16	7-5/8	7-15/16	4-1/2	6-1/4	20	20	19	19		
G20	207-1/4	84-3/8	42-3/8	44	8-3/4	51-5/8	21	74-5/8	116-3/4	22-3/4	8	11	7-1/2	24	154-7/8	15-3/4	13-9/16	7-5/8	7-15/16	4-1/2	6-1/4	20	20	19	19		
920	262-1/2	80-7/16	64-3/8	59-1/8	8-1/4	71-3/8	42	104-9/32	158-13/32	33	10	11	8	36	162-3/8	24-1/8	24-1/8	8-9/16	1-1/8	4-1/2	3-3/4	28-7/8	17-1/2	17-1/2	17-1/2		

DISCHARGE OPENING

MODEL	W	X	Y	Z	AA	AB	AC	AD
G10	13-1/2	18	140-7/8	13-1/4	11-1/2	3-7/8	7-5/8	7-15/16
G12	13-1/2	24	154-7/8	15-3/4	13-9/16	7-5/8	7-15/16	4-1/2
G15	13-1/2	24	154-7/8	15-3/4	13-9/16	7-5/8	7-15/16	4-1/2
G18	13-1/2	24	154-7/8	15-3/4	13-9/16	7-5/8	7-15/16	4-1/2
G20	13-1/2	24	154-7/8	15-3/4	13-9/16	7-5/8	7-15/16	4-1/2
920	4-1/2	19	6-1/8	5-1/2	4-1/2	3-3/4	23-1/2	17-1/2

WATER INTAKE DRAIN OPENING

MODEL	AA	AB	AC	AD
G10	4-1/2	6-1/4	18	16
G12	4-1/2	6-1/4	20	19
G15	4-1/2	6-1/4	20	19
G18	4-1/2	6-1/4	20	19
G20	4-1/2	6-1/4	20	19
920	3-3/4	23-1/2	17-1/2	17-1/2

TOTAL CAPACITY PIPE CONNECTION

MODEL	MP1	MP2	MP3	MP4	MP5	MP6	MP7	MP8	MP9	MP10
G10	8-1/4	96-15/16	24-3/4	49-3/16	3-1/16					
G12	8-1/4	102-15/16	28-3/4	4100-3/16	3-1/16					
G15	8-1/4	102-15/16	28-3/4	4100-3/16	3-1/16					
G18	9-1/2	99-13/16	38	97-9/16	6/8					
920	2-1/2	118-1/4	45-1/2	114-5/8	9/20					

STEAM COIL MODULE

MODEL	MP1	MP2	MP3	MP4	MP5	MP6	MP7	MP8	MP9	MP10
G10	176.49									
G12	328.19									
G15	328.19									
G18	505.64									
920	812.24									

OPTIONAL MIXING BOX FILTERS

MODEL	MP1	MP2	MP3	MP4	MP5	MP6	MP7	MP8	MP9	MP10
G10	2	5	5	5	5	5	5	5	5	5
G12	2	5	5	5	5	5	5	5	5	5
G15	2	5	5	5	5	5	5	5	5	5
G18	2	5	5	5	5	5	5	5	5	5
920	2	5	5	5	5	5	5	5	5	5

TONNAGE RANGE

MODEL	MIN	MAX
G10	2 Ton	5 Ton
G12	5 Ton	10 Ton
G15	5 Ton	10 Ton
G18	10 Ton	10 Ton
920	10 Ton	10 Ton

INTAKE FILTERS

MODEL	SIZE & QTY	WEIGHT	TONNAGE RANGE
G10	20"x25"x2" (3)	11.5 LBS	2 Ton
G12	16"x20"x2" (6)	15.35 LBS	5 Ton
G15	16"x20"x2" (6)	15.45 LBS	5 Ton
G18	16"x20"x2" (10)	19.95 LBS	10 Ton
920	20"x25"x2" (4)	29.90 LBS	10 Ton

CELEDEK EVAPORATIVE COOLING UNIT V/V

MODEL	SIZE & QTY	WEIGHT	TONNAGE RANGE
G10	25"x32"x12" (2)	6.5 GPH	2 Ton
G12	30"x36"x12" (2)	8.4 GPH	5 Ton
G15	30"x36"x12" (2)	8.4 GPH	5 Ton
G18	38"x43"x12" (2)	10.15 GPH	10 Ton
920	45"x54"x12" (2)	12.6 GPH	10 Ton

OPTIONAL MIXING BOX FILTERS

MODEL	SIZE & QTY	WEIGHT	TONNAGE RANGE
G10	10"x16"x2" (5)	6.5 GPH	2 Ton
G12	16"x25"x2" (2)	16.25 GPH	5 Ton
G15	16"x25"x2" (2)	16.25 GPH	5 Ton
G18	15"x15"x2" (2)	15.15 GPH	10 Ton
920	18"x25"x2" (4)	15.25 GPH	10 Ton

OPTIONAL MIXING BOX FILTERS

MODEL	SIZE & QTY	WEIGHT	TONNAGE RANGE
G10	10"x16"x2" (5)	6.5 GPH	2 Ton
G12	16"x25"x2" (2)	16.25 GPH	5 Ton
G15	16"x25"x2" (2)	16.25 GPH	5 Ton
G18	15"x15"x2" (2)	15.15 GPH	10 Ton
920	18"x25"x2" (4)	15.25 GPH	10 Ton

OPTIONAL MIXING BOX FILTERS

MODEL	SIZE & QTY	WEIGHT	TONNAGE RANGE
G10	10"x16"x2" (5)	6.5 GPH	2 Ton
G12	16"x25"x2" (2)	16.25 GPH	5 Ton
G15	16"x25"x2" (2)	16.25 GPH	5 Ton
G18	15"x15"x2" (2)	15.15 GPH	10 Ton
920	18"x25"x2" (4)	15.25 GPH	10 Ton