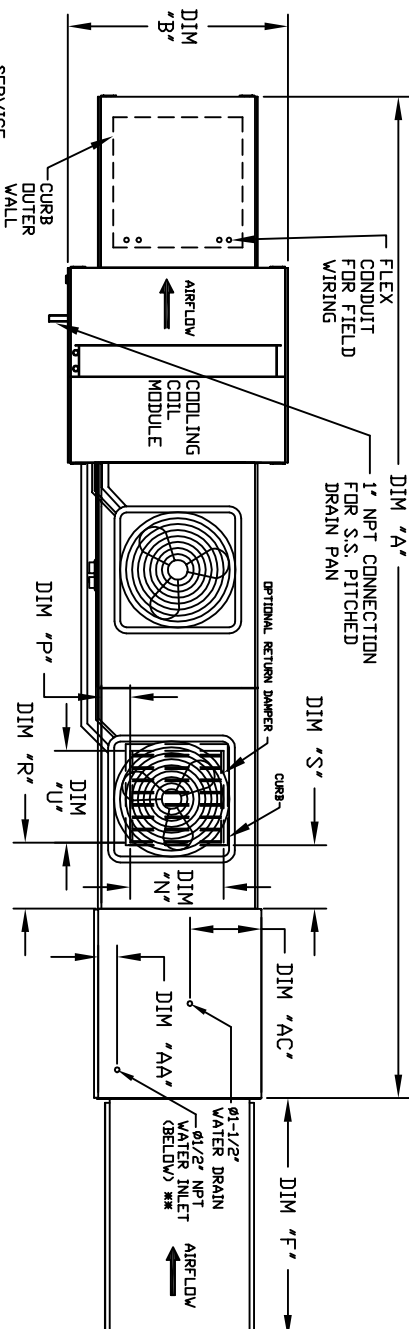
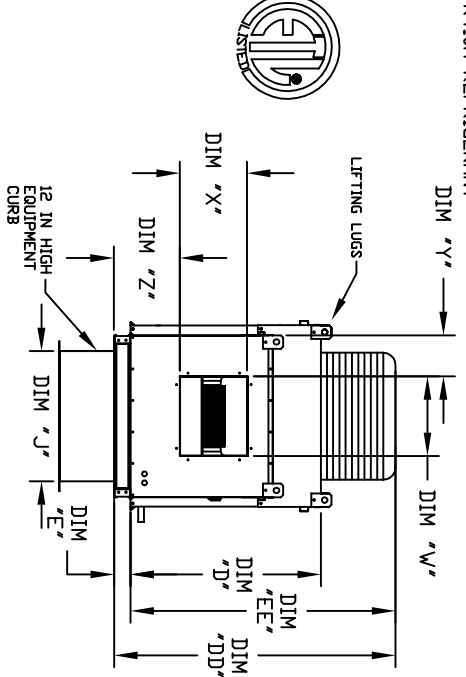


OUTDOOR SIDE DISCHARGE MOD PACKAGE UNIT, HEATING COIL, LPD EVAPORATIVE COOLER INTAKE, INTAKE HOOD AND OPTIONAL MIXING BOX

14.PS08030004-000
REV. 06/15/2015

CONDENSER INFORMATION				
MODEL	WEIGHT #1	TONNAGE	CC	DD
2 TON-G10	119 LBS	2 TON	26-5/16	56-1/16
3 TON-G10	134 LBS	3 TON	33-5/16	63-1/16
4 TON-G10	153 LBS	4 TON	40-1/16	70-3/8
5 TON-G10	177 LBS	5 TON	47-1/16	77-3/8
6 TON-G10	203 LBS	6 TON	54-1/16	84-3/8
7.5 TON-G10	233 LBS	7.5 TON	61-1/16	91-3/8
10 TON-G10	283 LBS	10 TON	71-1/16	101-3/8
15 TON-G10	394 LBS	15 TON	84-1/16	114-3/8
20 TON-G10	514 LBS	20 TON	97-3/16	127-3/8
25 TON-G10	643 LBS	25 TON	110-3/16	140-3/8
30 TON-G10	781 LBS	30 TON	123-1/16	153-3/8
35 TON-G10	928 LBS	35 TON	136-1/16	166-3/8
40 TON-G10	1084 LBS	40 TON	149-1/16	179-3/8
45 TON-G10	1249 LBS	45 TON	162-1/16	192-3/8
50 TON-G10	1424 LBS	50 TON	175-1/16	205-3/8
55 TON-G10	1609 LBS	55 TON	188-1/16	218-3/8
60 TON-G10	1804 LBS	60 TON	201-1/16	231-3/8
65 TON-G10	2009 LBS	65 TON	214-1/16	244-3/8
70 TON-G10	2224 LBS	70 TON	227-1/16	257-3/8
75 TON-G10	2449 LBS	75 TON	240-1/16	270-3/8
80 TON-G10	2684 LBS	80 TON	253-1/16	283-3/8
85 TON-G10	2929 LBS	85 TON	266-1/16	296-3/8
90 TON-G10	3184 LBS	90 TON	279-1/16	309-3/8
95 TON-G10	3449 LBS	95 TON	292-1/16	322-3/8
100 TON-G10	3724 LBS	100 TON	305-1/16	335-3/8
10 TON-G18	394 LBS	5 TON	32-13/16	76-3/16
10 TON-G20	394 LBS	5 TON	32-13/16	91-15/16

R410A REFRIGERANT



ALL DIMENSIONS ARE NOMINAL AND GIVEN IN INCHES.

MAX. ROOF OPENING 2" SMALLER THAN CURB OUTSIDE DIMENSION

1-1/2" ON G12 & G15 UNITS ONLY

UNIT DIMENSIONS		DISCHARGE OPENING		WATER INTAKE		WATER INTAKE		WATER INTAKE	
MODEL	A	B	C	D	E	F	G	H	I
G10	191-1/8	89-3/8	42-3/4	39	3-3/4	53-5/8	21	65-13/16	107-15/16
G12	205-1/8	95-3/8	47-3/4	44	3-3/4	57-5/8	21	74-5/8	116-3/4
G15	205-1/8	95-3/8	47-3/4	44	3-3/4	57-5/8	21	74-5/8	116-3/4
G18	207-1/4	97-3/8	49-3/8	46	3-3/4	59-3/8	21	76-3/8	118-3/4
G20	207-1/4	97-3/8	49-3/8	46	3-3/4	59-3/8	21	76-3/8	118-3/4
G25	211-1/4	101-3/8	53-3/8	50	3-3/4	63-3/8	21	80-3/8	122-3/4
G30	215-1/4	105-3/8	57-3/8	54	3-3/4	67-3/8	21	84-3/8	126-3/4
G35	219-1/4	109-3/8	61-3/8	58	3-3/4	71-3/8	21	88-3/8	130-3/4
G40	223-1/4	113-3/8	65-3/8	62	3-3/4	75-3/8	21	92-3/8	134-3/4
G45	227-1/4	117-3/8	69-3/8	66	3-3/4	79-3/8	21	96-3/8	138-3/4
G50	231-1/4	121-3/8	73-3/8	70	3-3/4	83-3/8	21	100-3/8	142-3/4
G55	235-1/4	125-3/8	77-3/8	74	3-3/4	87-3/8	21	104-3/8	146-3/4
G60	239-1/4	129-3/8	81-3/8	78	3-3/4	91-3/8	21	108-3/8	150-3/4
G65	243-1/4	133-3/8	85-3/8	82	3-3/4	95-3/8	21	112-3/8	154-3/4
G70	247-1/4	137-3/8	89-3/8	86	3-3/4	99-3/8	21	116-3/8	158-3/4
G75	251-1/4	141-3/8	93-3/8	90	3-3/4	103-3/8	21	120-3/8	162-3/4
G80	255-1/4	145-3/8	97-3/8	94	3-3/4	107-3/8	21	124-3/8	166-3/4
G85	259-1/4	149-3/8	101-3/8	98	3-3/4	111-3/8	21	128-3/8	170-3/4
G90	263-1/4	153-3/8	105-3/8	102	3-3/4	115-3/8	21	132-3/8	174-3/4
G95	267-1/4	157-3/8	109-3/8	106	3-3/4	119-3/8	21	136-3/8	178-3/4
G100	271-1/4	161-3/8	113-3/8	110	3-3/4	123-3/8	21	140-3/8	182-3/4

HOT WATER MODULE		STEAM COIL MODULE	
MODEL	TOTAL CAPACITY (GPH)	MODEL	TOTAL CAPACITY (GPH)
G10	165.63	G10	176.49
G12	320.88	G12	328.19
G15	320.88	G15	328.19
G18	514.97	G18	505.64
G20	831.87	G20	812.24

INTAKE FILTERS		OPTIONAL MIXING BOX FILTERS	
MODEL	FILTER SIZE & QTY	MODEL	FILTER SIZE & QTY
G10	20"x25"x2" (3)	G10	10"x16"x2" (5)
G12	16"x20"x2" (6)	G12	20"x25"x2" (2)
G15	16"x20"x2" (6)	G15	16"x25"x2" (1)
G18	16"x20"x2" (10)	G18	15"x15"x2" (2)
G20	20"x25"x2" (4)	G20	18"x25"x2" (4)

CELDICK EVAPORATIVE COOLING UNIT	
MODEL	TOTAL WEIGHT (LBS)
G10	1115
G12	1535
G15	1545
G18	1990
G20	3015