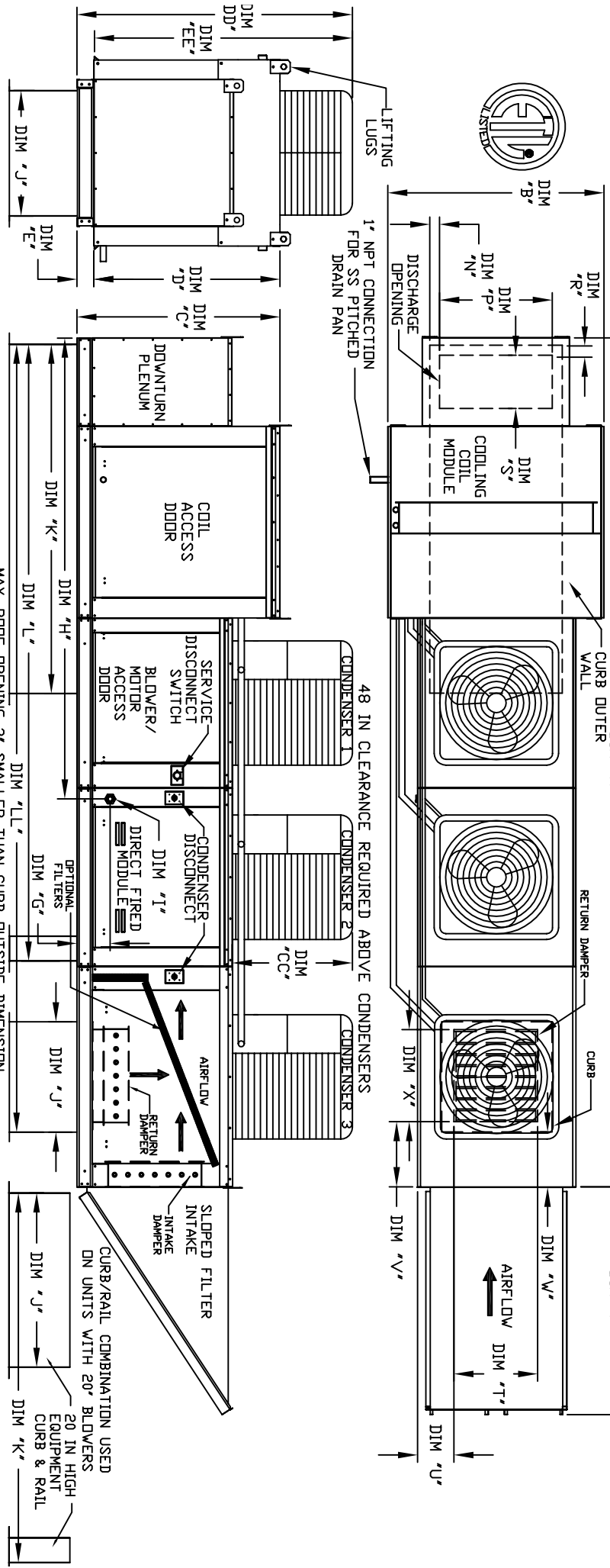


# MODULAR OUTDOOR DOWN DISCHARGE DIRECT FIRED RECIRCULATING HEATER WITH COOLING AND INTAKE HOOD



ALL DIMENSIONS ARE NOMINAL AND GIVEN IN INCHES.

MODEL	WEIGHT	UNIT DIMENSIONS										CURB/RAIL	DISCHARGE OPENING	RETURN DAMPER OPENING								
		A	B	C	D	E	F	G	H	J	K				L	M	N	P	R	S	T	U
D.500-G18	1895 LBS	196-1/4	54-3/8	56-3/8	51-1/8	5-1/4	51-5/8	9-1/2	114-7/16	35	84	150-5/8	190-1/16	5-1/16	22-3/8	1-1/2	18	28	7	4-1/2	30	
D.750-G18	1900 LBS	196-1/4	54-3/8	56-3/8	51-1/8	5-1/4	51-5/8	9-1/2	114-7/16	35	84	150-5/8	190-1/16	5-1/16	22-3/8	1-1/2	18	28	8	4-1/2	30	
D.1000-G18	1905 LBS	196-1/4	54-3/8	56-3/8	51-1/8	5-1/4	51-5/8	9-1/2	114-7/16	35	84	150-5/8	190-1/16	5-1/16	22-3/8	1-1/2	18	28	8	4-1/2	30	
D.1000-920	3080 LBS	257-1/2	60-7/16	64-3/8	59-1/8	5-1/4	76-3/8	13-9/16	151	42	115-3/16	199-7/8	247-7/8	5-1/4	31-1/2	1-13/16	23-1/2	33	10	7	4-1/2	30
D.1500-920	3095 LBS	257-1/2	60-7/16	64-3/8	59-1/8	5-1/4	76-3/8	13-9/16	151	42	115-3/16	199-7/8	247-7/8	5-1/4	31-1/2	1-13/16	23-1/2	33	10	11	8	36

BTU RANGE (MBH) GAS PRESSURE GAS CONNECTION TONNAGE RANGE FILTERS

MODEL	BURNER LENGTH	BTU LOW	BTU HIGH	MIN	MAX	1" (NPT)	MIN	MAX	FILTER SIZE & QTY	MAX. FILTER VELOCITY	FILTER SIZE & QTY	OPTIONAL MIXING BOX FILTERS
D.500-G18	18"	18	530	7" WC	14" WC	1	15 Ton	15 Ton	16"x20"x2" (6)	@800 CFM = 762 FPM	15"x20"x2" (4), 15"x15"x2" (2)	
D.750-G18	18"	27.5	825	7" WC	14" WC	1	15 Ton	15 Ton	16"x20"x2" (6)	@800 CFM = 762 FPM	15"x20"x2" (4), 15"x15"x2" (2)	
D.1000-G18	24"	36.6	1100	7" WC	14" WC	1	15 Ton	15 Ton	16"x20"x2" (6)	@800 CFM = 762 FPM	15"x20"x2" (4), 15"x15"x2" (2)	
D.1000-920	24"	36.6	1100	7" WC	14" WC	1	15 Ton	15 Ton	16"x20"x2" (6)	@800 CFM = 762 FPM	15"x20"x2" (4), 15"x15"x2" (2)	
D.1500-920	30"	45.8	1375	7" WC	14" WC	1-1/4	15 Ton	15 Ton	16"x20"x2" (10)	@1300 CFM = 743 FPM	18"x25"x2" (4), 16"x20"x2" (2)	

KADD CONDENSING UNIT WEIGHT TO WEIGHT IN TABLE ABOVE

CONDENSER INFORMATION

MODEL	WEIGHT #1	TONNAGE #2	TONNAGE #3	CC	DD	EE
15 TON-G18S91	5 TON	5 TON	5 TON	32-13/16	76-3/16	70-7/8
15 TON-920S91	5 TON	5 TON	5 TON	32-13/16	97-3/16	91-15/16

R410A REFRIGERANT

Direct Fired Profile Plate Specifications

Description:  
Direct fired burners shall have patented (US Patent No. US6692382), self-adjusting profile plates designed to ensure proper air velocity and pressure drop across the burner. Profile plates shall allow burners to achieve clean combustion by limiting by-product levels to a maximum of 50ppm of carbon monoxide (CO), and 50ppm of nitrogen dioxide (NO2).

Application:  
Spring-loaded burner profile plates are engineered to automatically react to the momentum of a fresh air stream, without the need for any motors or actuators to mechanically adjust them. With this feature, all DF units are designed for demand control ventilation (DCV) requirements.

Certifications:  
All profile plate assemblies shall be included in the DF unit's ETL listing and comply with combined safety standards ANSI Z83.4 and CSA 3.7 (non-recirculating DF heaters) and ANSI Z83.18 (recirculating DF heaters).

General Construction:  
Profile plates shall be formed from G90 galvanized steel.  
Profile plates shall vary in size per unit.  
Profile plates shall be mounted along the same plane as the discharge of the burner.  
Design shall incorporate properly torqued, permanently mounted spring hinges.

Direct Fired (DF) Profile Plate Assembly