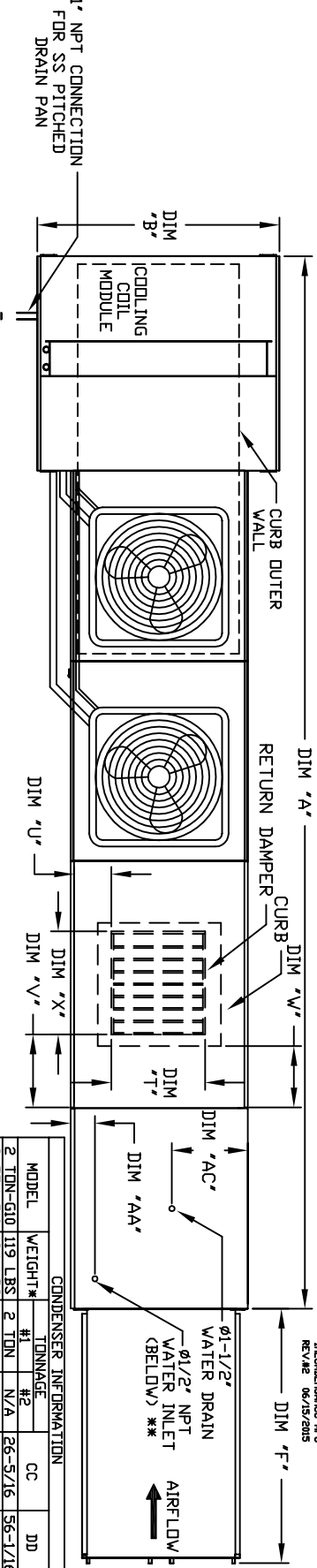
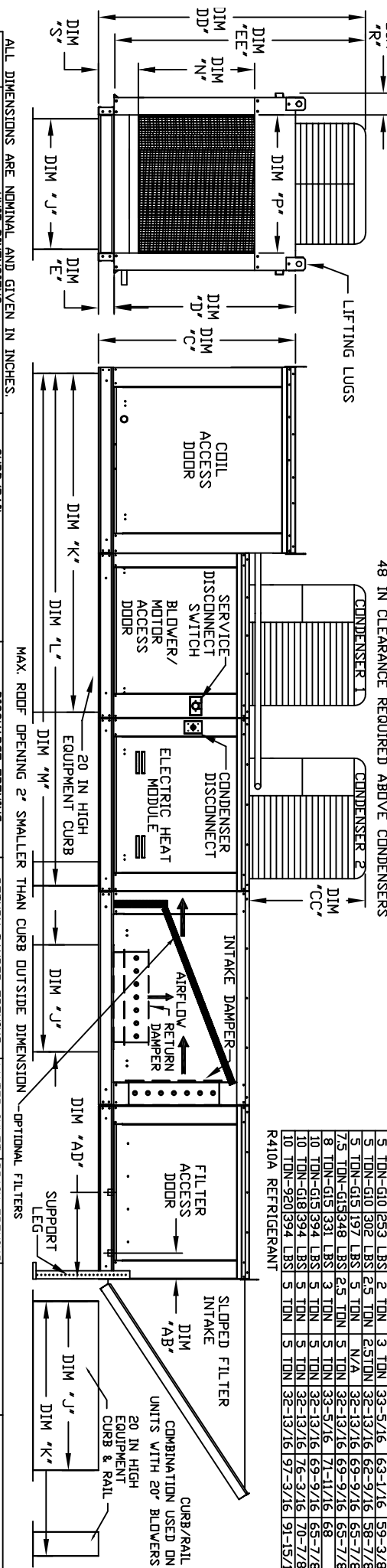


MODULAR OUTDOOR SIDE DISCHARGE ELECTRIC HEATER PACKAGED UNIT WITH COOLING, MIXING BOX, EVAPORATIVE COOLER INTAKE AND INTAKE HOOD



MODEL	WEIGHT*	TONNAGE	CC	DD	EE
2 TON-G10	119 LBS	2 TON	N/A	56-5/16	56-1/16
3 TON-G10	134 LBS	3 TON	N/A	63-1/16	59-3/8
5 TON-G10	253 LBS	2 TON	3 TON	33-5/16	63-1/16
5 TON-G10	302 LBS	2.5 TON	2.5 TON	32-13/16	62-9/16
5 TON-G15	197 LBS	5 TON	N/A	32-13/16	69-9/16
7.5 TON-G15	348 LBS	2.5 TON	5 TON	32-13/16	65-7/8
8 TON-G15	331 LBS	3 TON	5 TON	33-5/16	71-11/16
10 TON-G15	394 LBS	3 TON	5 TON	32-13/16	69-9/16
10 TON-G18	394 LBS	3 TON	5 TON	32-13/16	70-7/8
10 TON-G20	394 LBS	3 TON	5 TON	32-13/16	70-7/8
10 TON-G20	394 LBS	5 TON	5 TON	32-13/16	97-3/16

R410A REFRIGERANT



ALL DIMENSIONS ARE NOMINAL AND GIVEN IN INCHES.

MODEL	A	B	C	D	E	F	J	K	L	M	N	P	R	S	T	U	V	W	X	AA	AB	AC	AD
E1-G10	191-1/8	39-3/8	42-3/4	39	3-3/4	44-3/8	21	71	113-1/4	144-11/16	17-1/2	16	11	5-3/4	14	8	14	12-1/2	18	4-1/2	6-1/4	13	16
E2-G15	199-1/8	49-3/8	47-3/4	44	3-3/4	53-5/8	31	79	121-1/4	157-11/16	29-3/4	22-3/4	12-5/8	5-3/4	22-3/4	8	11	7-1/2	24	4-1/2	6-1/4	18	16
E3-G18	210-1/8	54-3/8	56-3/8	51-1/8	5-1/4	51-5/8	35	84	126-1/4	165-11/16	29-5/8	30	11-1/2	7-3/8	28	8	7	4-1/2	30	4-1/2	5-3/4	20	19
E4-920	262-1/2	60-7/16	64-3/8	59-1/8	5-1/4	76-3/8	42	115-3/16	169-1/2	217-7/16	36-3/4	34	12-1/2	7-3/8	33	10	11	8	36	4-1/2	5-3/4	23-1/2	17-1/2

MAX. ROOF OPENING 2" SMALLER THAN CURB OUTSIDE DIMENSION

OPTIONAL FILTERS

OPTIONAL MIXING BOX FILTERS

MAX. FILTER VELOCITY

MODEL	MIN	MAX	TOT. WEIGHT	MEDIA SIZE & QTY	VEL. @ MAX. CFM	NOZZLES	MAX. FLOW RATE
E1-G10	2 Ton	5 Ton	1190 LBS	20"x25"x2" (3)	406 FPM	6	3 GPH
E2-G15	5 Ton	10 Ton	1630 LBS	16"x20"x2" (8)	429 FPM	10	5 GPH
E3-G18	10 Ton	10 Ton	2000 LBS	20"x25"x2" (8)	429 FPM	14	7 GPH
E4-920	10 Ton	10 Ton	3240 LBS	16"x20"x2" (15)	572 FPM	24	12 GPH

MODEL	MIN	MAX	TOT. WEIGHT	MEDIA SIZE & QTY	VEL. @ MAX. CFM	NOZZLES	MAX. FLOW RATE
E1-G10	2 Ton	5 Ton	1195 LBS	20"x24"x12"	1050 FPM	12	3.9 GPH
E2-G15	5 Ton	10 Ton	1625 LBS	25"x32"x12"	1080 FPM	20	6.5 GPH
E3-G18	10 Ton	10 Ton	1990 LBS	30"x36"x12"	1067 FPM	28	8.4 GPH
E4-920	10 Ton	10 Ton	3210 LBS	38"x43"x12"	1322 FPM	35	10.15 GPH