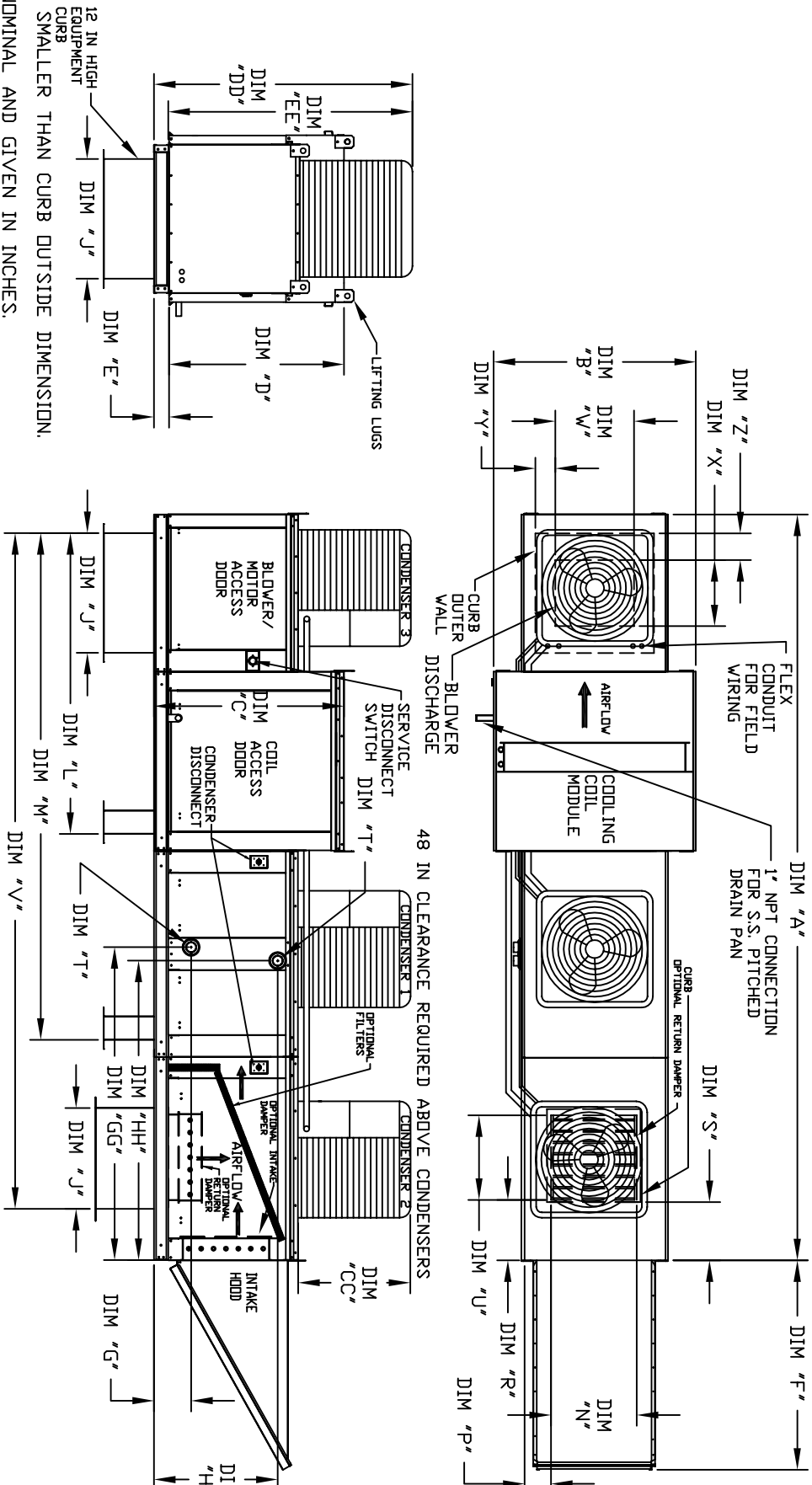




OUTDOOR DOWN DISCHARGE MOD PACKAGE UNIT, HEATING COIL, INTAKE HOOD AND OPTIONAL MIXING BOX

JMBHC0204H-4P0-15
REV. #3 06/15/2015



MAX. ROOF OPENING 2" SMALLER THAN CURB OUTSIDE DIMENSION.
ALL DIMENSIONS ARE NOMINAL AND GIVEN IN INCHES.

MODEL	UNIT DIMENSIONS													DISCHARGE OPENING													TONNAGE RANGE UNIT INFORMATION												
	A	B	C	D	E	F	G	H	I	J	K	L	M	N	P	R	S	U	V	W	X	Y	Z	MIN	MAX	FILTER SIZE & QTY	MAX. FILTER VELOCITY												
G18	171-7/8	54-3/8	56-3/8	51-1/8	5-1/4	51-5/8	35	79-3/16	121-5/16	28	8	7	4-1/2	30	162-3/8	22	19	19	24-7/8	24-7/8	7/8	8-9/16	1-1/8	15	15	15	16"x20"x2" (6)	8500 CFM = 762 FPM											
920	227-1/8	60-7/16	64-3/8	59-1/8	5-1/4	76-3/8	42	104-9/32	158-15/32	33	10	11	8	36	208	22	19	19	24-7/8	24-7/8	7/8	1-1/8	15	15	15	16"x20"x2" (10)	81500 CFM = 857 FPM												

MODEL	TOTAL CAPACITY PIPE CONNECTION													TOTAL CAPACITY PIPE CONNECTION													TOTAL CAPACITY PIPE CONNECTION												
	MBHD	1"	1-1/2"	2"	2-1/2"	3"	4"	5"	6"	8"	10"	12"	15"	18"	20"	24"	30"	36"	42"	48"	60"	72"	84"	96"	108"	120"	144"	180"											
G18	514.97	1-1/2"	1-1/2"	2"	2-1/2"	3"	4"	5"	6"	8"	10"	12"	15"	18"	20"	24"	30"	36"	42"	48"	60"	72"	84"	96"	108"	120"	144"	180"											
920	831.87	2-1/2"	2-1/2"	3"	3-1/2"	4"	5"	6"	8"	10"	12"	15"	18"	20"	24"	30"	36"	42"	48"	60"	72"	84"	96"	108"	120"	144"	180"												

MODEL	TOTAL CAPACITY PIPE CONNECTION													TOTAL CAPACITY PIPE CONNECTION													TOTAL CAPACITY PIPE CONNECTION												
	MBHD	1"	1-1/2"	2"	2-1/2"	3"	4"	5"	6"	8"	10"	12"	15"	18"	20"	24"	30"	36"	42"	48"	60"	72"	84"	96"	108"	120"	144"	180"											
G18	514.97	1-1/2"	1-1/2"	2"	2-1/2"	3"	4"	5"	6"	8"	10"	12"	15"	18"	20"	24"	30"	36"	42"	48"	60"	72"	84"	96"	108"	120"	144"	180"											
920	831.87	2-1/2"	2-1/2"	3"	3-1/2"	4"	5"	6"	8"	10"	12"	15"	18"	20"	24"	30"	36"	42"	48"	60"	72"	84"	96"	108"	120"	144"	180"												

*ADD CONDENSING UNIT WEIGHT TO WEIGHT IN TABLE ABOVE

CONDENSER INFORMATION

MODEL	WEIGHT*	#1	#2	#3	CC	DD	EE
15 TON-G18	591 LBS	5 TON	5 TON	5 TON	32-13/16	76-3/16	70-7/8
15 TON-920	591 LBS	5 TON	5 TON	5 TON	32-13/16	97-3/16	91-15/16