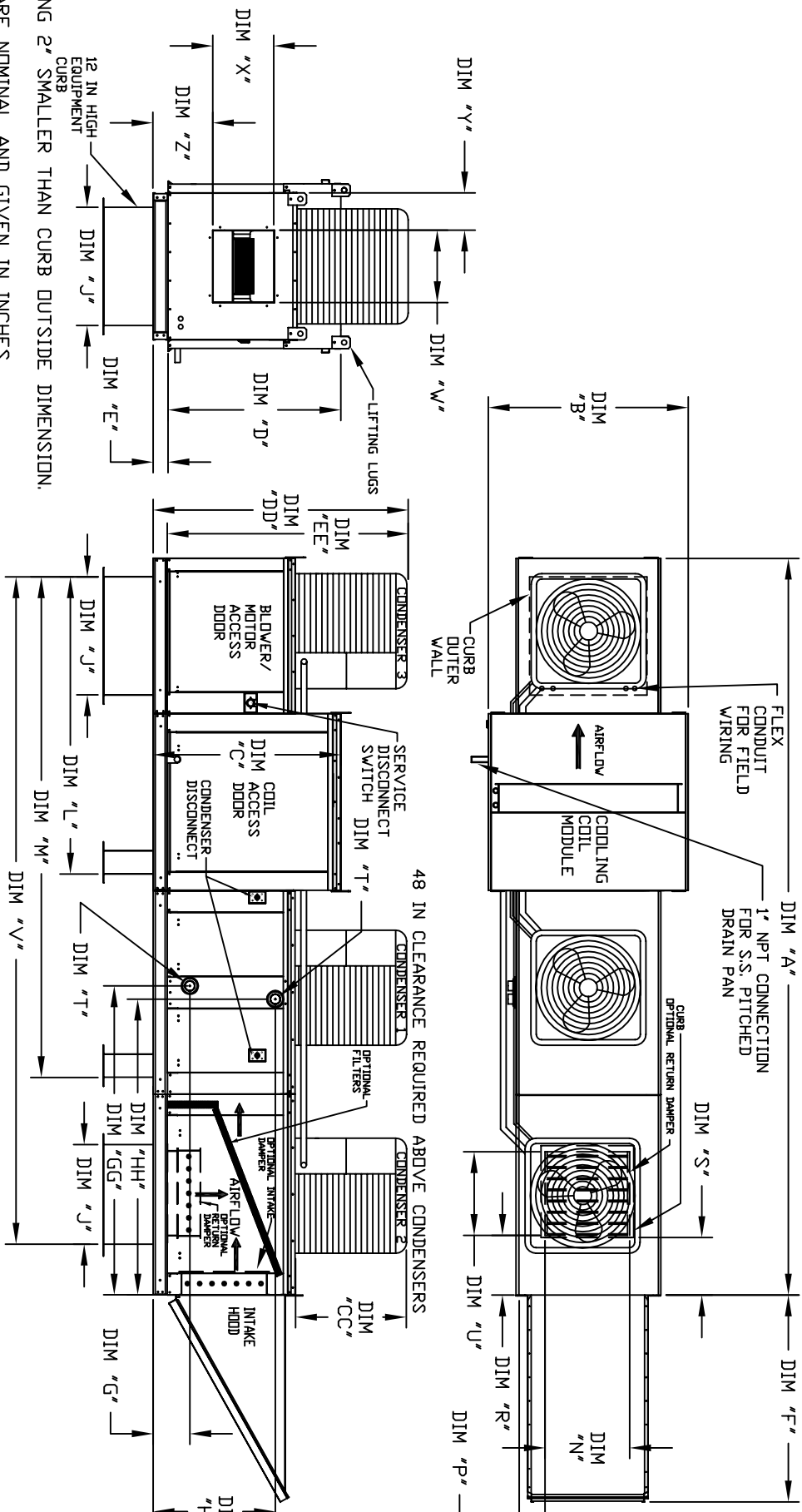




OUTDOOR SIDE DISCHARGE MOD PACKAGE UNIT, HEATING COIL, INTAKE HOOD AND OPTIONAL MIXING BOX

1H8HCCS5AH-MU-15
REV A3 06/15/2015



ALL DIMENSIONS ARE NOMINAL AND GIVEN IN INCHES.

MAX. ROOF OPENING 2\"/>

UNIT DIMENSIONS													DISCHARGE OPENING													TONNAGE RANGE UNIT INFORMATION												
MODEL	A	B	C	D	E	F	G	H	J	M	N	P	R	S	U	V	W	X	Y	Z	MIN	MAX	FILTER SIZE & QTY	MAX. FILTER VELOCITY														
G18	171-7/8	54-3/8	56-3/8	51-1/8	51-1/8	51-5/8	35	79-3/16	121-5/16	28	8	7	4-1/2	30	162-3/8	22	19	9	17-7/8	15	15	15	15	16"x20"x2" (6)	8500 CFM = 762 FPM													
920	227-1/8	60-7/16	64-3/8	59-1/8	5-1/4	76-3/8	42	104-9/32	158-15/32	33	10	11	8	36	208	24-7/8	24-7/8	11-1/16	19-1/8	15	15	15	15	16"x20"x2" (10)	81500 CFM = 857 FPM													

HDI WATER COIL MODULE													STEAM COIL MODULE												
MODEL	WEIGHT*	(MHB)	(GMP)	TOTAL CAPACITY	PIPE CONNECTION	G	GG	H	HH	MODEL	WEIGHT*	(MHB)	(GMP)	TOTAL CAPACITY	PIPE CONNECTION	PSI	G	GG	H	HH	OPTIONAL MIXING BOX FILTERS				
G18	1570	LBS	514.97	1-1/2	9-1/2	64-7/16	38	62-3/16	HH	G18	1565	LBS	505.64	2-1/2	5	10-1/4	63-5/16	23-5/8	63-5/16	HH	15"x20"x2" (4), 15"x15"x2" (2)				
920	2635	LBS	831.87	2-1/2	10	82-7/8	45-1/2	75-7/8	HH	920	2600	LBS	812.24	2-1/2	5	10-1/4	81-13/32	28-5/8	81-13/32	HH	18"x25"x2" (4), 16"x20"x2" (2)				

CONDENSER INFORMATION												
MODEL	WEIGHT*	#1	#2	#3	CC	DD	EE					
15 TON-G18	591 LBS	5 TON	5 TON	5 TON	32-13/16	76-3/16	70-7/8					
15 TON-920	591 LBS	5 TON	5 TON	5 TON	32-13/16	97-3/16	91-15/16					

*ADD CONDENSING UNIT WEIGHT TO WEIGHT IN TABLE ABOVE