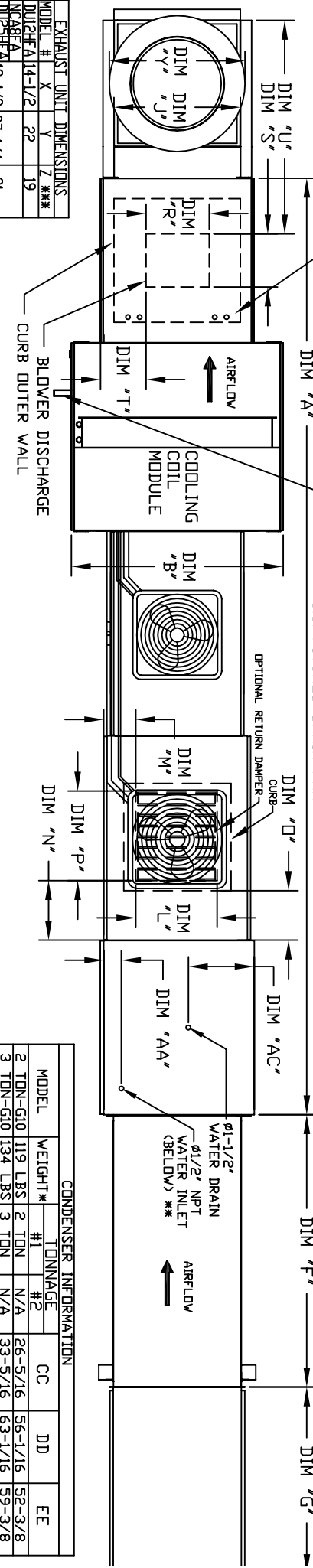


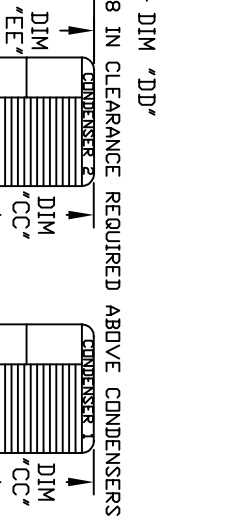
OUTDOOR DOWN DISCHARGE MOD PACKAGE UNIT-ROOFTOP PACKAGE, HEATING COIL, LPD EVAPORATIVE COOLER INTAKE, INTAKE HOOD AND OPTIONAL MIXING BOX FOR FIELD WIRING



EXHAUST UNIT DIMENSIONS

MODEL #	X	Y	Z	***
DJ12HFA14-1/2	22	19		
NC48FA				
DJ25HFA	18-1/2	27-1/4	21	
DJ30HFA				
DJ33HFA				
NC410FA	21-1/2	30-1/4	21	
DJ50HFA				
NC414FA	23	33-3/4	24-3/4	
DJ25HFA				
DJ30HFA				
NC416FA	23-1/2	39-3/8	28	
NC418FA	29-1/2	38-7/8	28	
NC424FA	30-5/8	43-3/8	33	
NC430FA	33-1/2	52-3/4	40	

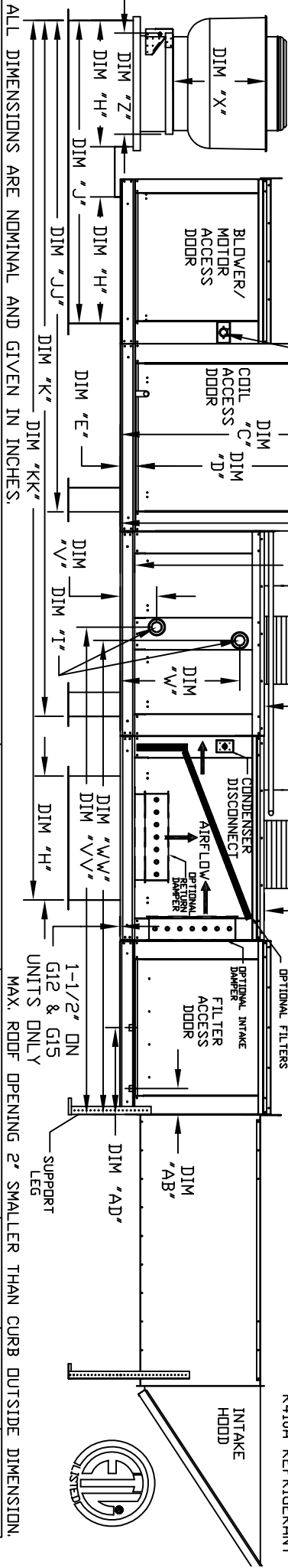
\*\*\* 9 IN. HIGH EXHAUST ADAPTER MAY BE REQUIRED



CONDENSER INFORMATION

MODEL	WEIGHT*	#1 TONNAGE	#2 TONNAGE	CC	DD	EE
2 TON-G10	119 LBS	2 TON	N/A	26-5/16	56-1/16	52-3/8
3 TON-G10	134 LBS	3 TON	N/A	33-5/16	63-1/16	59-3/8
5 TON-G10	253 LBS	2 TON	3 TON	33-5/16	63-1/16	59-3/8
5 TON-G10	302 LBS	2.5 TON	2.5 TON	32-13/16	62-9/16	58-7/8
5 TON-G12	197 LBS	5 TON	N/A	32-13/16	69-9/16	65-7/8
7.5 TON-G12	348 LBS	5 TON	5 TON	32-13/16	69-9/16	65-7/8
10 TON-G12	394 LBS	5 TON	5 TON	32-13/16	69-9/16	65-7/8
5 TON-G15	197 LBS	5 TON	N/A	32-13/16	69-9/16	65-7/8
7.5 TON-G15	302 LBS	2.5 TON	2.5 TON	32-13/16	69-9/16	65-7/8
8 TON-G15	331 LBS	3 TON	5 TON	33-5/16	71-11/16	68
10 TON-G15	394 LBS	5 TON	5 TON	32-13/16	69-9/16	65-7/8
10 TON-G18	394 LBS	5 TON	5 TON	32-13/16	76-3/16	70-7/8
10 TON-G20	394 LBS	5 TON	5 TON	32-13/16	97-3/16	91-15/16

R410A REFRIGERANT



ALL DIMENSIONS ARE NOMINAL AND GIVEN IN INCHES.

MAX. ROOF OPENING 2" SMALLER THAN CURB OUTSIDE DIMENSION.

UNIT DIMENSIONS

MODEL	A	B	C	D	E	F	G	H	J	JU	K	KK	L	M	N	O	P	R	S	T	U	AA	AB	AC	AD		
G10	191-1/8	39-3/8	42-3/4	39	3-3/4	80	53-5/8	21	56	100-3/16	142-15/16	175-7/8	14	8	14	12-1/2	18	13-1/4	11-1/2	36-3/4	20"x25"x2"	(3)	4-1/2	6-1/4	18	16	
G12	205-1/8	49-3/8	47-3/4	44	3-3/4	75	51-5/8	31	76	119-5/8	161-3/4	199-7/8	22-3/4	8	11	7-1/2	24	15-3/4	13-9/16	7-5/8	52-15/16	16"x20"x2"	(6)	4-1/2	5-3/4	20	19
G15	205-1/8	49-3/8	47-3/4	44	3-3/4	75	51-5/8	31	76	119-5/8	161-3/4	199-7/8	22-3/4	8	11	7-1/2	24	18-3/4	16	6-1/8	50-1/2	16"x20"x2"	(6)	4-1/2	5-3/4	20	19
G18	197-1/4	54-3/8	56-3/8	51-1/8	5-1/4	50	76-3/8	35	84	128-3/16	171-15/16	211-3/8	28	8	7	4-1/2	30	22	19	6-1/2	56	16"x20"x2"	(10)	4-1/2	5-3/4	23-1/2	17-1/2

RETURN OPENING

MODEL	G	GG	H	HH
G10	8-1/4	96-15/16	24-3/4	49-3/16
G12	8-1/4	102-15/16	28-3/4	100-3/16
G15	8-1/4	102-15/16	28-3/4	100-3/16
G18	9-1/2	99-13/16	38	97-9/16

DISCHARGE OPENING

MODEL	G	GG	H	HH
G10	8-3/4	95-9/16	16-15/16	95-9/16
G12	8-3/4	101-9/16	18-3/8	101-9/16
G15	8-3/4	101-9/16	18-3/8	101-9/16
G18	10-1/4	98-11/16	23-5/8	98-11/16

FILTER SIZE & QTY

MODEL	MIN	MAX
G10	2 Ton	5 Ton
G12	5 Ton	10 Ton
G15	5 Ton	10 Ton
G18	10 Ton	10 Ton

STEAM COIL MODULE

MODEL	TOTAL CAPACITY	PIPE CONNECTION	STEAM PSI	GG	HH	TONNAGE RANGE
G10	165.63 (MBS)	2" (MPT)	5	8-3/4	95-9/16	2 Ton
G12	320.88	2	5	8-3/4	101-9/16	5 Ton
G15	320.88	2	5	8-3/4	101-9/16	5 Ton
G18	514.97	1-1/2	5	10-1/4	98-11/16	10 Ton

CELDK EVAPORATIVE COOLING UNIT W/

MODEL	TOT. WEIGHT	STEAM COIL	MEDIA SIZE & QTY	NOZZLES	MAX. FLOW RATE
G10	1290 LBS	1290 LBS	20"x32"x12"	20	6.5 GPH
G12	1750 LBS	1750 LBS	30"x36"x12"	28	8.4 GPH
G15	1760 LBS	1760 LBS	30"x36"x12"	28	8.4 GPH
G18	2300 LBS	2295 LBS	38"x43"x12"	35	10.15 GPH

OPTIONAL MIXING BOX FILTERS

MODEL	10"x16"x2"	(3)	16"x25"x2"	(1)
G10	20"x25"x2"	(2)	16"x25"x2"	(1)
G12	20"x25"x2"	(2)	16"x25"x2"	(1)
G15	15"x20"x2"	(4)	15"x15"x2"	(2)

\*ADD CONDENSING UNIT WEIGHT TO WEIGHT IN TABLES ABOVE