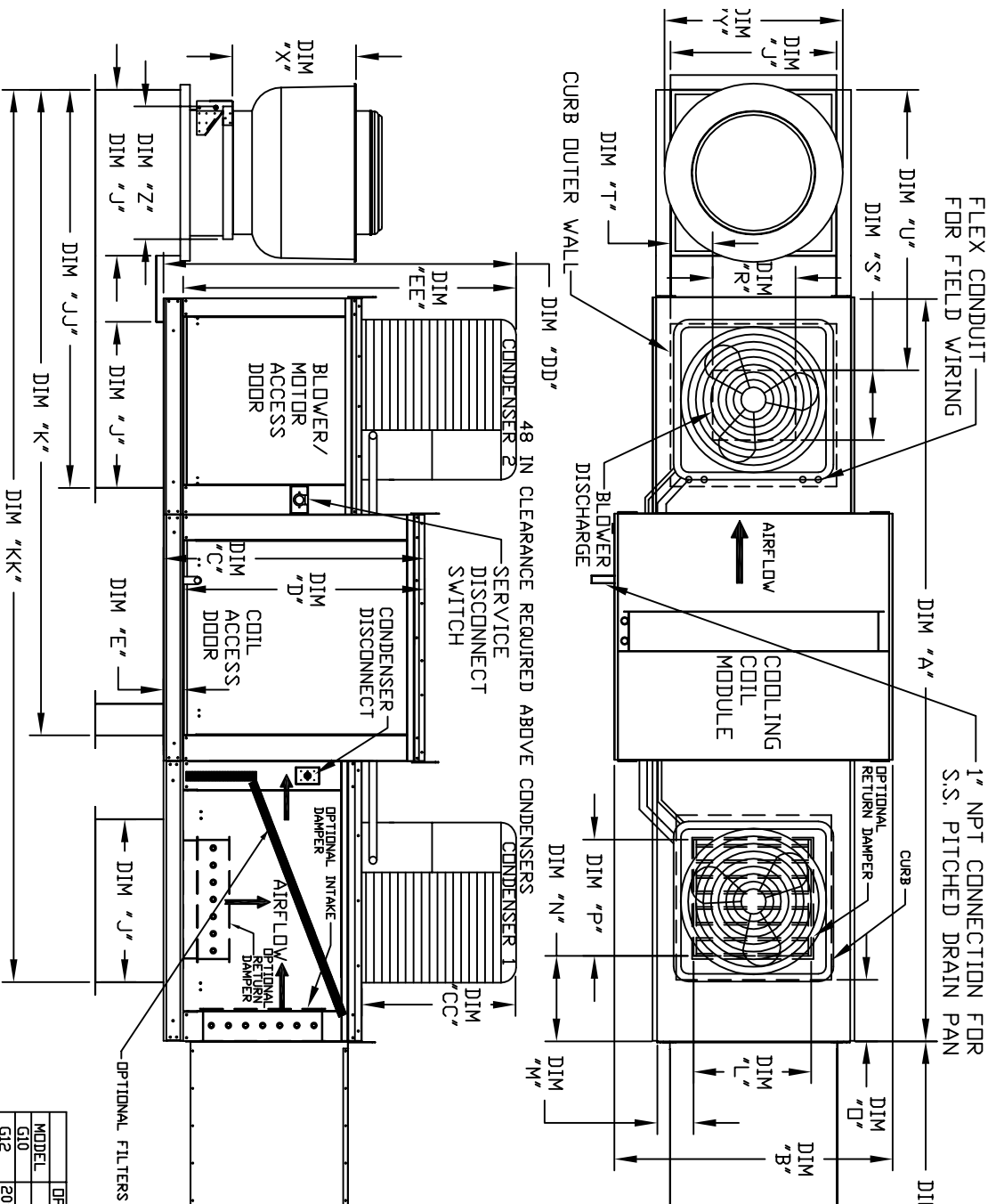


OUTDOOR DOWN DISCHARGE MOD PACKAGE UNIT-ROOFTOP PACKAGE, INTAKE HOOD AND OPTIONAL MIXING BOX

HTL/MCCDAHRT-HPU
REV.#7 06/15/2015



MAX. ROOF OPENING 2" SMALLER THAN CURB OUTSIDE DIMENSION.

ALL DIMENSIONS ARE NOMINAL AND GIVEN IN INCHES.

MODEL	WEIGHT*	#1 TONNAGE	#2 TONNAGE	CC	DD	EE
2 TON-G10	119 LBS	2 TON	N/A	26-5/16	56-1/16	52-3/8
3 TON-G10	134 LBS	3 TON	N/A	33-5/16	63-1/16	59-3/8
5 TON-G10	233 LBS	2 TON	N/A	33-5/16	63-1/16	59-3/8
5 TON-G10	302 LBS	2.5 TON	2.5 TON	32-13/16	62-9/16	58-7/8
5 TON-G12	197 LBS	5 TON	N/A	32-13/16	69-9/16	65-7/8
5 TON-G12	197 LBS	2.5 TON	2.5 TON	32-13/16	69-9/16	65-7/8
5 TON-G12	394 LBS	5 TON	5 TON	32-13/16	69-9/16	65-7/8
5 TON-G15	302 LBS	5 TON	N/A	32-13/16	69-9/16	65-7/8
5 TON-G15	331 LBS	3 TON	3 TON	33-5/16	71-11/16	68
8 TON-G15	394 LBS	5 TON	5 TON	32-13/16	69-9/16	65-7/8
10 TON-G18	394 LBS	5 TON	5 TON	32-13/16	76-3/16	70-7/8
10 TON-G20	394 LBS	5 TON	5 TON	32-13/16	97-3/16	91-15/16

MODEL #	X	Y	Z**
DUA2HFA	14-1/2	22	19
NCA8FA	18-1/2	27-1/4	21
DUS0HFA	21-1/2	30-1/4	21
NCA14FA	23-1/2	33-3/4	24-3/4
DUS5HFA	29-1/2	38-7/8	28
NCA18FA	30-5/8	43-3/8	33
NCA24FA	33-1/2	52-3/4	40

** 9 IN. HIGH EXHAUST ADAPTER MAY BE REQUIRED

MODEL	UNIT DIMENSIONS													RETURN OPENING													DISCHARGE OPENING													TINNAGE RANGE			FILTER SIZE & QTY
	A	B	C	D	E	F	G	J	U	K	KK	L	M	N	D	P	R	S	T	U	MIN	MAX	&	QTY																			
G10	895	116-5/8	39-3/8	42-3/4	39	3-3/4	88	44-3/8	21	56	100-3/16	133-5/8	14	8	14	12-1/2	18	13-1/4	11-1/2	3-7/8	36-3/4	2	5	16	x20	x2	(3)																
G12	1235	124-5/8	49-3/8	47-3/4	44	3-3/4	80	53-5/8	31	76	119-5/8	157-5/8	14	8	11	7-1/2	24	15-3/4	13-9/16	7-5/8	52-15/16	5	10	20	x25	x2	(3)																
G15	1245	124-5/8	49-3/8	47-3/4	44	3-3/4	80	53-5/8	31	76	119-5/8	157-5/8	14	8	11	7-1/2	24	18-3/4	16	6-1/8	50-1/2	5	10	20	x25	x2	(3)																
G18	1525	129-5/8	54-3/8	56-3/8	51-1/8	5-1/4	75	51-5/8	35	84	128-3/16	169-1/8	28	8	7	4-1/2	30	22	19	6-1/2	56	10	10	16	x20	x2	(6)																
920	2510	172-13/16	60-7/16	64-3/8	59-1/8	5-1/4	50	76-3/8	42	98	160-9/32	209-15/16	33	10	11	8	36	24-7/8	24-7/8	8-9/16	57-1/8	10	10	10	16	x20	x2	(10)															

*ADD CONDENSING UNIT WEIGHT TO WEIGHT IN TABLE ABOVE

