

CONDENSER INFORMATION

| MODEL | WEIGHT* | #1 TONNAGE | #2 TONNAGE | CC | DD | EE |
|-------------|---------|------------|------------|----------|----------|----------|
| 2 TON-G10 | 119 LBS | 2 TON | N/A | 26-5/16 | 56-1/16 | 52-3/8 |
| 3 TON-G10 | 134 LBS | 3 TON | N/A | 33-5/16 | 63-1/16 | 59-3/8 |
| 4 TON-G10 | 153 LBS | 3 TON | 3 TON | 33-5/16 | 63-1/16 | 59-3/8 |
| 5 TON-G10 | 177 LBS | 2.5 TON | 2.5 TON | 32-13/16 | 62-3/16 | 58-7/8 |
| 7.5 TON-G15 | 197 LBS | 5 TON | N/A | 32-13/16 | 69-9/16 | 65-7/8 |
| 8 TON-G15 | 331 LBS | 3 TON | 5 TON | 33-5/16 | 71-11/16 | 68 |
| 10 TON-G18 | 394 LBS | 5 TON | 5 TON | 32-13/16 | 69-9/16 | 65-7/8 |
| 10 TON-G18 | 394 LBS | 5 TON | 5 TON | 32-13/16 | 76-3/16 | 70-7/8 |
| 10 TON-G20 | 394 LBS | 5 TON | 5 TON | 32-13/16 | 97-3/16 | 91-15/16 |

R410A REFRIGERANT

ALL DIMENSIONS ARE NOMINAL AND GIVEN IN INCHES.

| MODEL | UNIT DIMENSIONS | | | | CURB/RAIL | | | | DISCHARGE OPENING | | | | WATER INLET DRAIN OPENING | | | | FILTERS | | | | | | | | | | | | | | | | | | | | |
|-----------|-----------------|---------|--------|--------|-----------|--------|---------|---------|-------------------|---------|---------|--------|---------------------------|--------|-------|-------|---------|--------|--------|-----|-----|-----|------|------|------|------|------|------|------|------|------|------|------|------|------|------|------|
| | A | B | C | D | E | F | G | H | I | J | K | L | M | N | O | P | Q | R | S | AA | AB | AC | AD | AE | AF | AG | AH | AI | AJ | AK | | | | | | | |
| D250-G10 | 181-1/8 | 39-3/8 | 42-3/4 | 39 | 3-3/4 | 44-3/8 | 7-13/16 | 77-1/16 | 21 | 71 | 113-1/4 | 17-1/2 | 16 | 11 | 5-3/4 | 4-1/2 | 38-1/2 | 13 | 48-1/4 | 20* | 25* | 22* | (3) | (3) | (3) | (3) | (3) | (3) | (3) | (3) | (3) | (3) | (3) | | | | |
| D500-G10 | 181-1/8 | 39-3/8 | 42-3/4 | 39 | 3-3/4 | 44-3/8 | 7-13/16 | 77-1/16 | 21 | 71 | 113-1/4 | 17-1/2 | 16 | 11 | 5-3/4 | 4-1/2 | 38-1/2 | 13 | 48-1/4 | 20* | 25* | 22* | (3) | (3) | (3) | (3) | (3) | (3) | (3) | (3) | (3) | (3) | (3) | | | | |
| D250-G12 | 182-1/8 | 42-3/8 | 47-3/4 | 44 | 3-3/4 | 45-3/8 | 7-13/16 | 85-1/16 | 21 | 72 | 113-1/4 | 17-1/2 | 16 | 11 | 5-3/4 | 4-1/2 | 38-1/2 | 13 | 48-1/4 | 20* | 25* | 22* | (3) | (3) | (3) | (3) | (3) | (3) | (3) | (3) | (3) | (3) | (3) | | | | |
| D500-G12 | 182-1/8 | 42-3/8 | 47-3/4 | 44 | 3-3/4 | 45-3/8 | 7-13/16 | 85-1/16 | 21 | 72 | 113-1/4 | 17-1/2 | 16 | 11 | 5-3/4 | 4-1/2 | 38-1/2 | 13 | 48-1/4 | 20* | 25* | 22* | (3) | (3) | (3) | (3) | (3) | (3) | (3) | (3) | (3) | (3) | (3) | (3) | | | |
| D750-G12 | 182-1/8 | 49-3/8 | 47-3/4 | 44 | 3-3/4 | 45-3/8 | 7-13/16 | 85-1/16 | 21 | 79 | 121-1/4 | 17-1/2 | 16 | 11 | 5-3/4 | 4-1/2 | 38-1/2 | 13 | 48-1/4 | 20* | 25* | 22* | (3) | (3) | (3) | (3) | (3) | (3) | (3) | (3) | (3) | (3) | (3) | (3) | | | |
| D1000-G12 | 182-1/8 | 49-3/8 | 47-3/4 | 44 | 3-3/4 | 45-3/8 | 7-13/16 | 85-1/16 | 21 | 79 | 121-1/4 | 17-1/2 | 16 | 11 | 5-3/4 | 4-1/2 | 38-1/2 | 13 | 48-1/4 | 20* | 25* | 22* | (3) | (3) | (3) | (3) | (3) | (3) | (3) | (3) | (3) | (3) | (3) | (3) | | | |
| D1500-G12 | 182-1/8 | 49-3/8 | 47-3/4 | 44 | 3-3/4 | 45-3/8 | 7-13/16 | 85-1/16 | 21 | 79 | 121-1/4 | 17-1/2 | 16 | 11 | 5-3/4 | 4-1/2 | 38-1/2 | 13 | 48-1/4 | 20* | 25* | 22* | (3) | (3) | (3) | (3) | (3) | (3) | (3) | (3) | (3) | (3) | (3) | (3) | (3) | | |
| D250-G18 | 185-1/8 | 44-3/8 | 47-3/4 | 44 | 3-3/4 | 45-3/8 | 7-13/16 | 85-1/16 | 21 | 79 | 121-1/4 | 17-1/2 | 16 | 11 | 5-3/4 | 4-1/2 | 38-1/2 | 13 | 48-1/4 | 20* | 25* | 22* | (3) | (3) | (3) | (3) | (3) | (3) | (3) | (3) | (3) | (3) | (3) | (3) | (3) | | |
| D500-G18 | 185-1/8 | 44-3/8 | 47-3/4 | 44 | 3-3/4 | 45-3/8 | 7-13/16 | 85-1/16 | 21 | 79 | 121-1/4 | 17-1/2 | 16 | 11 | 5-3/4 | 4-1/2 | 38-1/2 | 13 | 48-1/4 | 20* | 25* | 22* | (3) | (3) | (3) | (3) | (3) | (3) | (3) | (3) | (3) | (3) | (3) | (3) | (3) | | |
| D750-G18 | 185-1/8 | 51-3/8 | 47-3/4 | 44 | 3-3/4 | 45-3/8 | 7-13/16 | 85-1/16 | 21 | 84 | 129-1/4 | 17-1/2 | 16 | 11 | 5-3/4 | 4-1/2 | 38-1/2 | 13 | 48-1/4 | 20* | 25* | 22* | (3) | (3) | (3) | (3) | (3) | (3) | (3) | (3) | (3) | (3) | (3) | (3) | (3) | | |
| D1000-G18 | 185-1/8 | 51-3/8 | 47-3/4 | 44 | 3-3/4 | 45-3/8 | 7-13/16 | 85-1/16 | 21 | 84 | 129-1/4 | 17-1/2 | 16 | 11 | 5-3/4 | 4-1/2 | 38-1/2 | 13 | 48-1/4 | 20* | 25* | 22* | (3) | (3) | (3) | (3) | (3) | (3) | (3) | (3) | (3) | (3) | (3) | (3) | (3) | (3) | |
| D1500-G18 | 185-1/8 | 51-3/8 | 47-3/4 | 44 | 3-3/4 | 45-3/8 | 7-13/16 | 85-1/16 | 21 | 84 | 129-1/4 | 17-1/2 | 16 | 11 | 5-3/4 | 4-1/2 | 38-1/2 | 13 | 48-1/4 | 20* | 25* | 22* | (3) | (3) | (3) | (3) | (3) | (3) | (3) | (3) | (3) | (3) | (3) | (3) | (3) | (3) | |
| D250-G24 | 188-1/8 | 60-7/16 | 64-3/8 | 51-1/8 | 5-1/4 | 51-1/8 | 13-9/16 | 120-3/8 | 42 | 115-3/4 | 169-1/2 | 36-3/4 | 34 | 11-1/2 | 7-3/8 | 4-1/2 | 41-1/8 | 23-1/2 | 52-7/8 | 20* | 25* | 22* | (15) | (15) | (15) | (15) | (15) | (15) | (15) | (15) | (15) | (15) | (15) | (15) | (15) | (15) | |
| D500-G24 | 188-1/8 | 60-7/16 | 64-3/8 | 51-1/8 | 5-1/4 | 51-1/8 | 13-9/16 | 120-3/8 | 42 | 115-3/4 | 169-1/2 | 36-3/4 | 34 | 11-1/2 | 7-3/8 | 4-1/2 | 41-1/8 | 23-1/2 | 52-7/8 | 20* | 25* | 22* | (15) | (15) | (15) | (15) | (15) | (15) | (15) | (15) | (15) | (15) | (15) | (15) | (15) | (15) | |
| D750-G24 | 188-1/8 | 60-7/16 | 64-3/8 | 51-1/8 | 5-1/4 | 51-1/8 | 13-9/16 | 120-3/8 | 42 | 115-3/4 | 169-1/2 | 36-3/4 | 34 | 11-1/2 | 7-3/8 | 4-1/2 | 41-1/8 | 23-1/2 | 52-7/8 | 20* | 25* | 22* | (15) | (15) | (15) | (15) | (15) | (15) | (15) | (15) | (15) | (15) | (15) | (15) | (15) | (15) | (15) |
| D1000-G24 | 188-1/8 | 60-7/16 | 64-3/8 | 51-1/8 | 5-1/4 | 51-1/8 | 13-9/16 | 120-3/8 | 42 | 115-3/4 | 169-1/2 | 36-3/4 | 34 | 11-1/2 | 7-3/8 | 4-1/2 | 41-1/8 | 23-1/2 | 52-7/8 | 20* | 25* | 22* | (15) | (15) | (15) | (15) | (15) | (15) | (15) | (15) | (15) | (15) | (15) | (15) | (15) | (15) | (15) |
| D1500-G24 | 188-1/8 | 60-7/16 | 64-3/8 | 51-1/8 | 5-1/4 | 51-1/8 | 13-9/16 | 120-3/8 | 42 | 115-3/4 | 169-1/2 | 36-3/4 | 34 | 11-1/2 | 7-3/8 | 4-1/2 | 41-1/8 | 23-1/2 | 52-7/8 | 20* | 25* | 22* | (15) | (15) | (15) | (15) | (15) | (15) | (15) | (15) | (15) | (15) | (15) | (15) | (15) | (15) | (15) |

UNIT INFORMATION

| MODEL | BURNER BTU/DW/ BTU/HIGH | GAS PRESSURE | Tonnage Range | | Standard Evaporative Cooling Unit | | Deltek Evaporative Cooling Unit | | | | | | | | | |
|-----------|-------------------------|--------------|---------------|--------|---|----------------|---|-----------------|---------|----|-------|----------|-----------------|----------|----|-----------|
| | | | MIN | MAX | TOT. WEIGHT MEDIA SIZE & QTY VEL. @ MAX CFM/NZ/LEST | MAX. FLOW RATE | TOT. WEIGHT MEDIA SIZE & QTY VEL. @ MAX CFM/NZ/LEST | MAX. FLOW RATE | | | | | | | | |
| D250-G10 | 6" | 18 | 1/4" VC | 14" VC | 2 TON | 5 TON | 1180 LBS | 20"x25"x2" (3) | 406 FPM | 6 | 3 GPH | 1180 LBS | 20"x24"x12" | 1050 FPM | 12 | 3.9 GPH |
| D500-G10 | 12" | 18 | 1/4" VC | 14" VC | 3 TON | 5 TON | 1180 LBS | 20"x25"x2" (3) | 406 FPM | 6 | 3 GPH | 1180 LBS | 20"x24"x12" | 1050 FPM | 12 | 3.9 GPH |
| D750-G10 | 12" | 18 | 1/4" VC | 14" VC | 3 TON | 5 TON | 1180 LBS | 20"x25"x2" (3) | 406 FPM | 6 | 3 GPH | 1180 LBS | 20"x24"x12" | 1050 FPM | 12 | 3.9 GPH |
| D1000-G10 | 12" | 18 | 1/4" VC | 14" VC | 3 TON | 5 TON | 1180 LBS | 20"x25"x2" (3) | 406 FPM | 6 | 3 GPH | 1180 LBS | 20"x24"x12" | 1050 FPM | 12 | 3.9 GPH |
| D1500-G10 | 12" | 18 | 1/4" VC | 14" VC | 3 TON | 5 TON | 1180 LBS | 20"x25"x2" (3) | 406 FPM | 6 | 3 GPH | 1180 LBS | 20"x24"x12" | 1050 FPM | 12 | 3.9 GPH |
| D250-G12 | 6" | 18 | 1/4" VC | 14" VC | 3 TON | 5 TON | 1180 LBS | 20"x25"x2" (3) | 406 FPM | 6 | 3 GPH | 1180 LBS | 20"x24"x12" | 1050 FPM | 12 | 3.9 GPH |
| D500-G12 | 12" | 18 | 1/4" VC | 14" VC | 3 TON | 5 TON | 1180 LBS | 20"x25"x2" (3) | 406 FPM | 6 | 3 GPH | 1180 LBS | 20"x24"x12" | 1050 FPM | 12 | 3.9 GPH |
| D750-G12 | 12" | 18 | 1/4" VC | 14" VC | 3 TON | 5 TON | 1180 LBS | 20"x25"x2" (3) | 406 FPM | 6 | 3 GPH | 1180 LBS | 20"x24"x12" | 1050 FPM | 12 | 3.9 GPH |
| D1000-G12 | 12" | 18 | 1/4" VC | 14" VC | 3 TON | 5 TON | 1180 LBS | 20"x25"x2" (3) | 406 FPM | 6 | 3 GPH | 1180 LBS | 20"x24"x12" | 1050 FPM | 12 | 3.9 GPH |
| D1500-G12 | 12" | 18 | 1/4" VC | 14" VC | 3 TON | 5 TON | 1180 LBS | 20"x25"x2" (3) | 406 FPM | 6 | 3 GPH | 1180 LBS | 20"x24"x12" | 1050 FPM | 12 | 3.9 GPH |
| D250-G18 | 12" | 18 | 1/4" VC | 14" VC | 3 TON | 5 TON | 1180 LBS | 20"x25"x2" (3) | 406 FPM | 6 | 3 GPH | 1180 LBS | 20"x24"x12" | 1050 FPM | 12 | 3.9 GPH |
| D500-G18 | 12" | 18 | 1/4" VC | 14" VC | 3 TON | 5 TON | 1180 LBS | 20"x25"x2" (3) | 406 FPM | 6 | 3 GPH | 1180 LBS | 20"x24"x12" | 1050 FPM | 12 | 3.9 GPH |
| D750-G18 | 12" | 18 | 1/4" VC | 14" VC | 3 TON | 5 TON | 1180 LBS | 20"x25"x2" (3) | 406 FPM | 6 | 3 GPH | 1180 LBS | 20"x24"x12" | 1050 FPM | 12 | 3.9 GPH |
| D1000-G18 | 12" | 18 | 1/4" VC | 14" VC | 3 TON | 5 TON | 1180 LBS | 20"x25"x2" (3) | 406 FPM | 6 | 3 GPH | 1180 LBS | 20"x24"x12" | 1050 FPM | 12 | 3.9 GPH |
| D1500-G18 | 12" | 18 | 1/4" VC | 14" VC | 3 TON | 5 TON | 1180 LBS | 20"x25"x2" (3) | 406 FPM | 6 | 3 GPH | 1180 LBS | 20"x24"x12" | 1050 FPM | 12 | 3.9 GPH |
| D250-G24 | 24" | 36.6 | 1/4" VC | 14" VC | 5 TON | 10 TON | 2990 LBS | 16"x20"x2" (15) | 572 FPM | 14 | 7 GPH | 2990 LBS | 16"x20"x2" (15) | 1322 FPM | 35 | 10.15 GPH |
| D500-G24 | 24" | 36.6 | 1/4" VC | 14" VC | 5 TON | 10 TON | 2990 LBS | 16"x20"x2" (15) | 572 FPM | 14 | 7 GPH | 2990 LBS | 16"x20"x2" (15) | 1322 FPM | 35 | 10.15 GPH |
| D750-G24 | 24" | 36.6 | 1/4" VC | 14" VC | 5 TON | 10 TON | 2990 LBS | 16"x20"x2" (15) | 572 FPM | 14 | 7 GPH | 2990 LBS | 16"x20"x2" (15) | 1322 FPM | 35 | 10.15 GPH |
| D1000-G24 | 24" | 36.6 | 1/4" VC | 14" VC | 5 TON | 10 TON | 2990 LBS | 16"x20"x2" (15) | 572 FPM | 14 | 7 GPH | 2990 LBS | 16"x20"x2" (15) | 1322 FPM | 35 | 10.15 GPH |
| D1500-G24 | 24" | 36.6 | 1/4" VC | 14" VC | 5 TON | 10 TON | 2990 LBS | 16"x20"x2" (15) | 572 FPM | 14 | 7 GPH | 2990 LBS | 16"x20"x2" (15) | 1322 FPM | 35 | 10.15 GPH |

Direct Fired Profile Plates Specifications:

Direct Fired Burners shall have patented US Patent No. US5232929, self-cleaning profile plates designed to ensure complete velocity and pressure drop across the burner profile plates. Profile plates shall allow burners to achieve clean combustion by listing by-product levels to a medium of 50ppm of carbon monoxide (CO), and 0.5ppm of nitrogen dioxide (NO2).

Applications:

Spring-loaded burner profile plates are engineered to automatically react to the momentary of pressure fluctuations that occur during burner operation. The burner profile plates are designed with this feature, all JP units are designed for demand control ventilation (DCV) requirements.

General Construction:

Profile plates shall be formed from G90 galvanized steel.

Profile plates shall be mounted along the same plane as the discharge of the burner.

Design shall incorporate properly torqued, permanently mounted spring hinges.

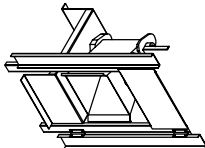
General Construction:

Profile plates shall be formed from G90 galvanized steel.

Profile plates shall be mounted along the same plane as the discharge of the burner.

Design shall incorporate properly torqued, permanently mounted spring hinges.

Direct Fired (DF) Profile Plate Assembly



MAXIMUM CONDENSING UNIT WEIGHT TO WEIGHT IN TABLE ABOVE

**MAX. EVAP WATER PRESSURE = 50 PSI @ 70 DEG. F