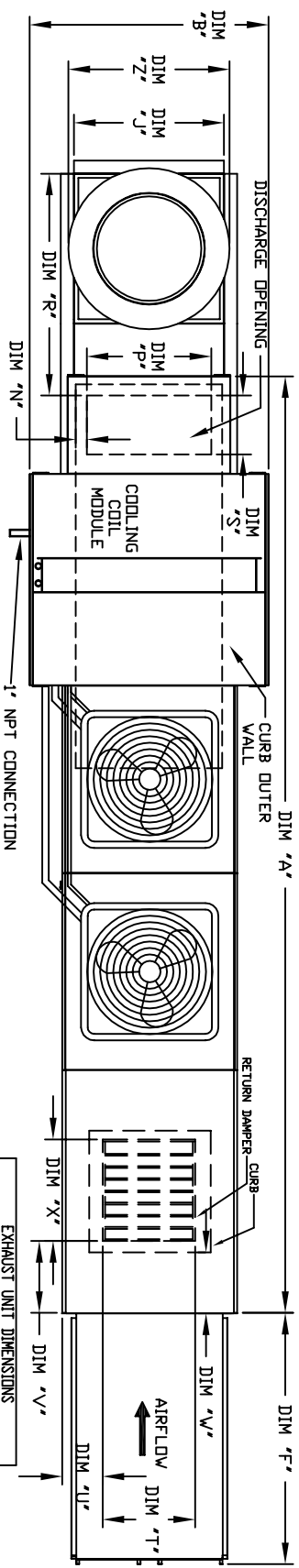


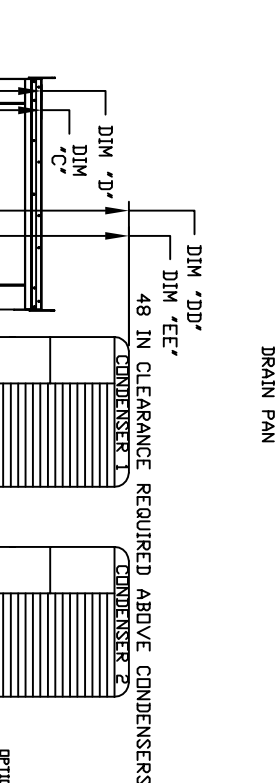
MODULAR OUTDOOR DOWN DISCHARGE DIRECT FIRED RECIRCULATING HEATER-ROOF TOP PACKAGE WITH COOLING AND INTAKE HOOD

18HDDF SAACPERF-RPU
REV #4 06/15/2015



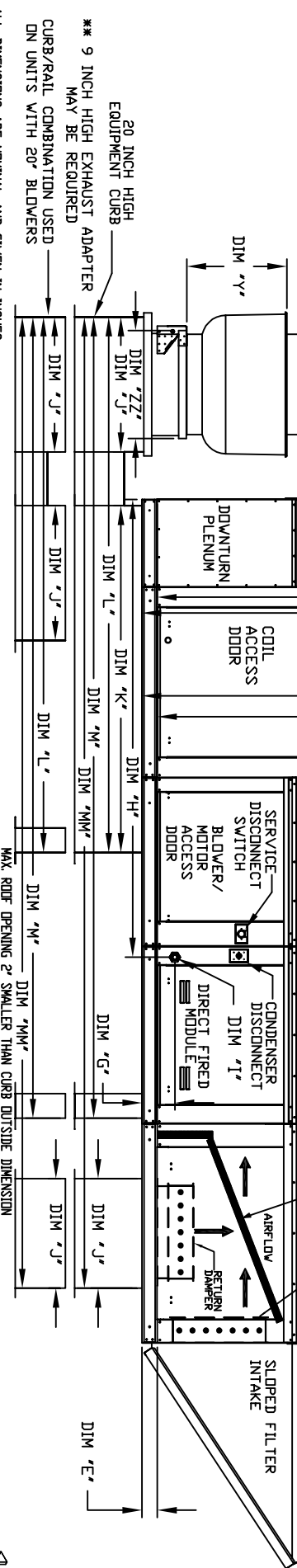
CONDENSER INFORMATION

MODEL	WEIGHT*	#1 TONNAGE	#2 TONNAGE	CC	DD	EE
2 TON-G10	119 LBS	2 TON	N/A	66-5/16	56-1/16	52-3/8
3 TON-G10	134 LBS	3 TON	N/A	63-5/16	63-1/16	59-3/8
5 TON-G10	253 LBS	2 TON	3 TON	63-5/16	63-1/16	59-3/8
5 TON-G10	302 LBS	2 1/2 TON	2 1/2 TON	32-13/16	62-9/16	58-7/8
7 1/2 TON-G15	197 LBS	5 TON	N/A	32-13/16	69-9/16	65-7/8
7 1/2 TON-G15	348 LBS	2 1/2 TON	5 TON	32-13/16	69-9/16	65-7/8
8 TON-G15	331 LBS	3 TON	5 TON	33-5/16	71-1/16	68
10 TON-G15	394 LBS	3 TON	5 TON	32-13/16	69-9/16	65-7/8
10 TON-G18	394 LBS	5 TON	5 TON	32-13/16	76-3/16	72-7/8
10 TON-G18	394 LBS	5 TON	5 TON	32-13/16	76-3/16	72-7/8
10 TON-G20	394 LBS	5 TON	5 TON	32-13/16	97-3/16	91-15/16



EXHAUST UNIT DIMENSIONS

MODEL #	Y	Z	ZZ**
DJ2HFA	14-1/2	22	19
NC48FA	18-1/2	27-1/4	21
DJ33HFA	21-1/2	30-1/4	21
NC40FA	23	33-3/4	24-3/4
NC41FA	23-1/2	33-3/8	28
NC41BFA	29-1/2	38-7/8	28
NC42FA	30-5/8	43-3/8	33
NC43FA	33-1/2	52-3/4	40



UNIT INFORMATION

MODEL	WEIGHT	A	B	C	E	F	G	H	J	K	L	M	N	P	R	S	T	U	V	X			
D250-G10	185 LBS	17-1/4	39-3/8	42-3/4	39	3-3/4	44-3/8	7-13/16	95-7/16	21	71	106	166-3/8	198-1/16	3-9/16	13-7/8	36-13/16	11-1/2	14	8	14	12-1/2	18
D300-G10	190 LBS	17-1/4	39-3/8	42-3/4	39	3-3/4	44-3/8	7-13/16	95-7/16	21	71	106	166-3/8	198-1/16	3-9/16	13-7/8	36-13/16	11-1/2	14	8	14	12-1/2	18
D250-G15	1600 LBS	19-1/4	49-3/8	47-3/4	44	3-3/4	53-5/8	7-13/16	109-7/16	31	79	124	190-5/8	227-1/16	4-5/16	22-3/8	46-9/16	18	22-3/4	8	11	7-1/2	24
D300-G15	1605 LBS	19-1/4	49-3/8	47-3/4	44	3-3/4	53-5/8	7-13/16	109-7/16	31	79	124	190-5/8	227-1/16	4-5/16	22-3/8	46-9/16	18	22-3/4	8	11	7-1/2	24
D250-G18	1895 LBS	19-1/4	54-3/8	51-3/4	44	3-3/4	57-5/8	9-1/2	114-7/16	35	84	133	199-5/8	239-1/16	6-5/16	22-3/8	49-1/2	18	28	8	7	4-1/2	30
D300-G18	1900 LBS	19-1/4	54-3/8	51-3/4	44	3-3/4	57-5/8	9-1/2	114-7/16	35	84	133	199-5/8	239-1/16	6-5/16	22-3/8	49-1/2	18	28	8	7	4-1/2	30
D1000-G18	1905 LBS	19-1/4	54-3/8	51-3/4	44	3-3/4	57-5/8	9-1/2	114-7/16	35	84	133	199-5/8	239-1/16	6-5/16	22-3/8	49-1/2	18	28	8	7	4-1/2	30
D1500-G20	3080 LBS	25-7/16	64-3/8	59-1/8	51-1/4	76-3/8	13-9/16	151	42	115-3/16	171-3/16	255-7/8	303-7/8	5-1/4	5-1/4	31-1/2	56-13/16	23-1/2	33	10	11	8	36
D1500-G20	3095 LBS	25-7/16	64-3/8	59-1/8	51-1/4	76-3/8	13-9/16	151	42	115-3/16	171-3/16	255-7/8	303-7/8	5-1/4	5-1/4	31-1/2	56-13/16	23-1/2	33	10	11	8	36

UNIT DIMENSIONS

MODEL	WEIGHT	A	B	C	E	F	G	H	J	K	L	M	N	P	R	S	T	U	V	X			
D250-G10	185 LBS	17-1/4	39-3/8	42-3/4	39	3-3/4	44-3/8	7-13/16	95-7/16	21	71	106	166-3/8	198-1/16	3-9/16	13-7/8	36-13/16	11-1/2	14	8	14	12-1/2	18
D300-G10	190 LBS	17-1/4	39-3/8	42-3/4	39	3-3/4	44-3/8	7-13/16	95-7/16	21	71	106	166-3/8	198-1/16	3-9/16	13-7/8	36-13/16	11-1/2	14	8	14	12-1/2	18
D250-G15	1600 LBS	19-1/4	49-3/8	47-3/4	44	3-3/4	53-5/8	7-13/16	109-7/16	31	79	124	190-5/8	227-1/16	4-5/16	22-3/8	46-9/16	18	22-3/4	8	11	7-1/2	24
D300-G15	1605 LBS	19-1/4	49-3/8	47-3/4	44	3-3/4	53-5/8	7-13/16	109-7/16	31	79	124	190-5/8	227-1/16	4-5/16	22-3/8	46-9/16	18	22-3/4	8	11	7-1/2	24
D250-G18	1895 LBS	19-1/4	54-3/8	51-3/4	44	3-3/4	57-5/8	9-1/2	114-7/16	35	84	133	199-5/8	239-1/16	6-5/16	22-3/8	49-1/2	18	28	8	7	4-1/2	30
D300-G18	1900 LBS	19-1/4	54-3/8	51-3/4	44	3-3/4	57-5/8	9-1/2	114-7/16	35	84	133	199-5/8	239-1/16	6-5/16	22-3/8	49-1/2	18	28	8	7	4-1/2	30
D1000-G18	1905 LBS	19-1/4	54-3/8	51-3/4	44	3-3/4	57-5/8	9-1/2	114-7/16	35	84	133	199-5/8	239-1/16	6-5/16	22-3/8	49-1/2	18	28	8	7	4-1/2	30
D1500-G20	3080 LBS	25-7/16	64-3/8	59-1/8	51-1/4	76-3/8	13-9/16	151	42	115-3/16	171-3/16	255-7/8	303-7/8	5-1/4	5-1/4	31-1/2	56-13/16	23-1/2	33	10	11	8	36
D1500-G20	3095 LBS	25-7/16	64-3/8	59-1/8	51-1/4	76-3/8	13-9/16	151	42	115-3/16	171-3/16	255-7/8	303-7/8	5-1/4	5-1/4	31-1/2	56-13/16	23-1/2	33	10	11	8	36

OPTIONAL MIXING BOX FILTERS

MODEL	WEIGHT	A	B	C	E	F	G	H	J	K	L	M	N	P	R	S	T	U	V	X			
D250-G10	185 LBS	17-1/4	39-3/8	42-3/4	39	3-3/4	44-3/8	7-13/16	95-7/16	21	71	106	166-3/8	198-1/16	3-9/16	13-7/8	36-13/16	11-1/2	14	8	14	12-1/2	18
D300-G10	190 LBS	17-1/4	39-3/8	42-3/4	39	3-3/4	44-3/8	7-13/16	95-7/16	21	71	106	166-3/8	198-1/16	3-9/16	13-7/8	36-13/16	11-1/2	14	8	14	12-1/2	18
D250-G15	1600 LBS	19-1/4	49-3/8	47-3/4	44	3-3/4	53-5/8	7-13/16	109-7/16	31	79	124	190-5/8	227-1/16	4-5/16	22-3/8	46-9/16	18	22-3/4	8	11	7-1/2	24
D300-G15	1605 LBS	19-1/4	49-3/8	47-3/4	44	3-3/4	53-5/8	7-13/16	109-7/16	31	79	124	190-5/8	227-1/16	4-5/16	22-3/8	46-9/16	18	22-3/4	8	11	7-1/2	24
D250-G18	1895 LBS	19-1/4	54-3/8	51-3/4	44	3-3/4	57-5/8	9-1/2	114-7/16	35	84	133	199-5/8	239-1/16	6-5/16	22-3/8	49-1/2	18	28	8	7	4-1/2	30
D300-G18	1900 LBS	19-1/4	54-3/8	51-3/4	44	3-3/4	57-5/8	9-1/2	114-7/16	35	84	133	199-5/8	239-1/16	6-5/16	22-3/8	49-1/2	18	28	8	7	4-1/2	30
D1000-G18	1905 LBS	19-1/4	54-3/8	51-3/4	44	3-3/4	57-5/8	9-1/2	114-7/16	35	84	133	199-5/8	239-1/16	6-5/16	22-3/8	49-1/2	18	28	8	7	4-1/2	30
D1500-G20	3080 LBS	25-7/16	64-3/8	59-1/8	51-1/4	76-3/8	13-9/16	151	42	115-3/16	171-3/16	255-7/8	303-7/8	5-1/4	5-1/4	31-1/2	56-13/16	23-1/2	33	10	11	8	36
D1500-G20	3095 LBS	25-7/16	64-3/8	59-1/8	51-1/4	76-3/8	13-9/16	151	42	115-3/16	171-3/16	255-7/8	303-7/8	5-1/4	5-1/4	31-1/2	56-13/16	23-1/2	33	10	11	8	36

Direct Fired (DF) Profile Plate Assembly

Direct Fired Profile Plate Specifications

Description: Burners shall have attached GHS Patent No. US6298222, self-cleaning profile plates designed to ensure proper air velocity and pressure drop across the burner. Profile plates shall allow burners to achieve clean combustion by lifting by-product levels to a medium of 5ppm of carbon monoxide (CO), and 50ppm of Nitrogen dioxide (NO2).

Application: Spring-loaded burner profile plates are engineered to automatically react to the momentum of a fresh air stream, without the need for any motors or actuators to mechanically adjust the lift. With this feature, all DF units are designed for demand control ventilation (DCV) requirements.

General Construction: All profile plate assemblies shall be included in the DF unit's ETL listing and comply with combiners (re-circulating DF heaters) and GHS 517 (non-re-circulating DF heaters) and ANSI Z89.8.

Profile plates shall be formed from 680 galvanized steel.

Profile plates shall vary in size per unit as the same plate as the discharge with combiner.

Design shall incorporate properly torqued, permanently mounted spring hinges.