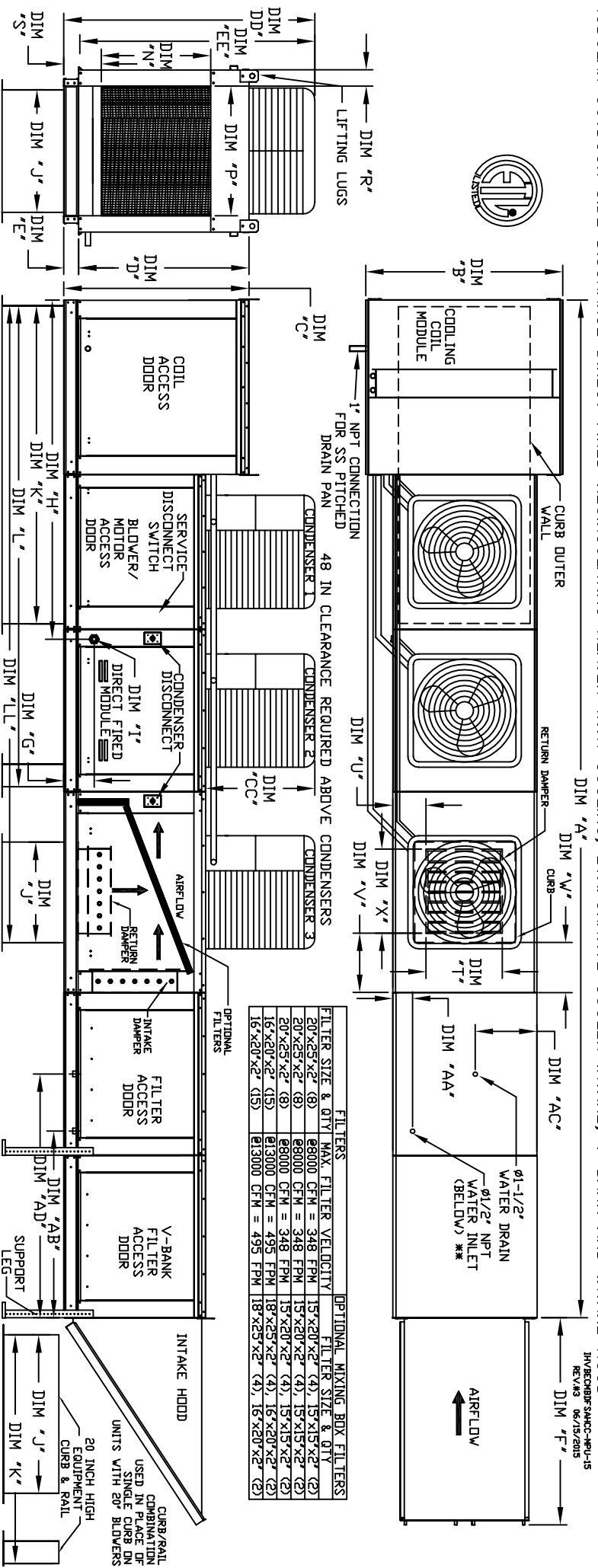


MODULAR OUTDOOR SIDE DISCHARGE DIRECT FIRED RECIRCULATING HEATER WITH COOLING, EVAPORATIVE COOLER INTAKE, V-BANK AND INTAKE HOOD

1H/REC/09F/3AAC-HEU-15
REV. 03 06/15/2015



ALL DIMENSIONS ARE NOMINAL AND GIVEN IN INCHES.

MAX. ROOF OPENING 2" SMALLER THAN CURB OUTSIDE DIMENSION

FILTERS

FILTER SIZE & QTY	MAX. FILTER VELOCITY	FILTER SIZE & QTY
20"x20"x2" (8)	8800 CFM = 348 FPM	15"x20"x2" (4), 15"x15"x2" (2)
20"x25"x2" (8)	8800 CFM = 348 FPM	15"x20"x2" (4), 15"x15"x2" (2)
20"x25"x2" (8)	8800 CFM = 348 FPM	15"x20"x2" (4), 15"x15"x2" (2)
16"x20"x2" (15)	813000 CFM = 495 FPM	18"x25"x2" (4), 16"x20"x2" (2)
16"x20"x2" (15)	813000 CFM = 495 FPM	18"x25"x2" (4), 16"x20"x2" (2)

UNIT INFORMATION

MODEL	A	B	C	D	E	F	G	H	J	K	L	N	P	R	S	T	U	V	X	AA	AB	AC	AD
D.500-G18	248-3/8	154-3/8	56-3/8	51-1/8	5-1/4	51-5/8	9-1/2	90-1/16	35	84	126-1/4	203-15/16	29-5/8	30	11-1/2	7-3/8	28	8	7	30	4-1/2	44	20
D.750-G18	248-3/8	154-3/8	56-3/8	51-1/8	5-1/4	51-5/8	9-1/2	90-1/16	35	84	126-1/4	203-15/16	29-5/8	30	11-1/2	7-3/8	28	8	7	30	4-1/2	44	20
D.1000-G18	248-3/8	154-3/8	56-3/8	51-1/8	5-1/4	51-5/8	9-1/2	90-1/16	35	84	126-1/4	203-15/16	29-5/8	30	11-1/2	7-3/8	28	8	7	30	4-1/2	44	20
D.1000-920	297-7/8	160-7/16	64-3/8	59-1/8	5-1/4	76-3/8	13-9/16	120-5/8	42	115-3/16	169-1/2	252-7/8	36-3/4	34	12-1/2	7-3/8	33	10	11	36	4-1/2	41-1/8	23-1/2
D.1500-920	297-7/8	160-7/16	64-3/8	59-1/8	5-1/4	76-3/8	13-9/16	120-5/8	42	115-3/16	169-1/2	252-7/8	36-3/4	34	12-1/2	7-3/8	33	10	11	36	4-1/2	41-1/8	23-1/2

STANDARD EVAPORATIVE COOLING UNIT

MODEL	BURNER BTU RANGE (QBHD)	BTU LOW	BTU HIGH	GAS PRESSURE	GAS CONNECTION	TONNAGE RANGE	TOT. WEIGHT	MEDIA SIZE & QTY	VEL. @ MAX. CFM	MIN. FLOW RATE	MAX. FLOW RATE
D.500-G18	12"	18	550	77" VC	1/4" VC	1	2160 LBS	20"x25"x2" (8)	348 FPM	14	14
D.750-G18	18"	27.5	825	77" VC	1/4" VC	1	2160 LBS	20"x25"x2" (8)	348 FPM	14	14
D.1000-G18	24"	36.6	1100	77" VC	1/4" VC	1	2160 LBS	20"x25"x2" (8)	348 FPM	14	14
D.1000-920	24"	36.6	1100	77" VC	1/4" VC	1	2160 LBS	20"x25"x2" (8)	348 FPM	14	14
D.1500-920	30"	45.8	1375	77" VC	1/4" VC	1	3440 LBS	38"x43"x12" (15)	1382 FPM	35	35

CONDENSER INFORMATION

MODEL	WEIGHT #1	TONNAGE #2	CC	DD	EE
15 TDN-G18/591	5 TON	5 TON	32-13/16	76-3/16	70-7/8
15 TDN-920/591	5 TON	5 TON	32-13/16	97-3/16	91-5/16

2410A REFRIGERANT

MODEL	WEIGHT #1	TONNAGE #2	CC	DD	EE
15 TDN-G18/591	5 TON	5 TON	32-13/16	76-3/16	70-7/8
15 TDN-920/591	5 TON	5 TON	32-13/16	97-3/16	91-5/16

DESCRIPTION: Direct fired burners shall have patented (US Patent No. US6295232), self-adjusting profile plates that allow burners to achieve clean combustion by lifting by-product levels to a medium of 50ppm of carbon monoxide (CO) and 50ppm of nitrogen dioxide (NO2).

GENERAL CONSTRUCTION: Profile plates shall be formed from 600 galvanized steel. Profile plates shall vary in size per unit. Profile plates shall be mounted along the same plane as the discharge of the burner. Design shall incorporate properly torqued, permanently mounted spring hinges.

APPLICATION: Spring-loaded burner profile plates are engineered to automatically react to the momentum of a fresh air stream, without the need for any motors or actuators to mechanically adjust them. With this feature, all DF units are designed for demand control ventilation (DCV) requirements.

IDENTIFICATION: All profile plate assemblies shall be included in the DF unit's ETL listing and comply with combined UL 181 and UL 181C requirements, and CSA S17 (non-rectracting DF heaters) and ANSI Z89.18 (rectracting DF heaters).

CEILING EVAPORATIVE COOLING UNIT: Direct fired profile plate specifications: **MAX. EVAP WATER PRESSURE = 50 PSI @ 70 DEG. F

