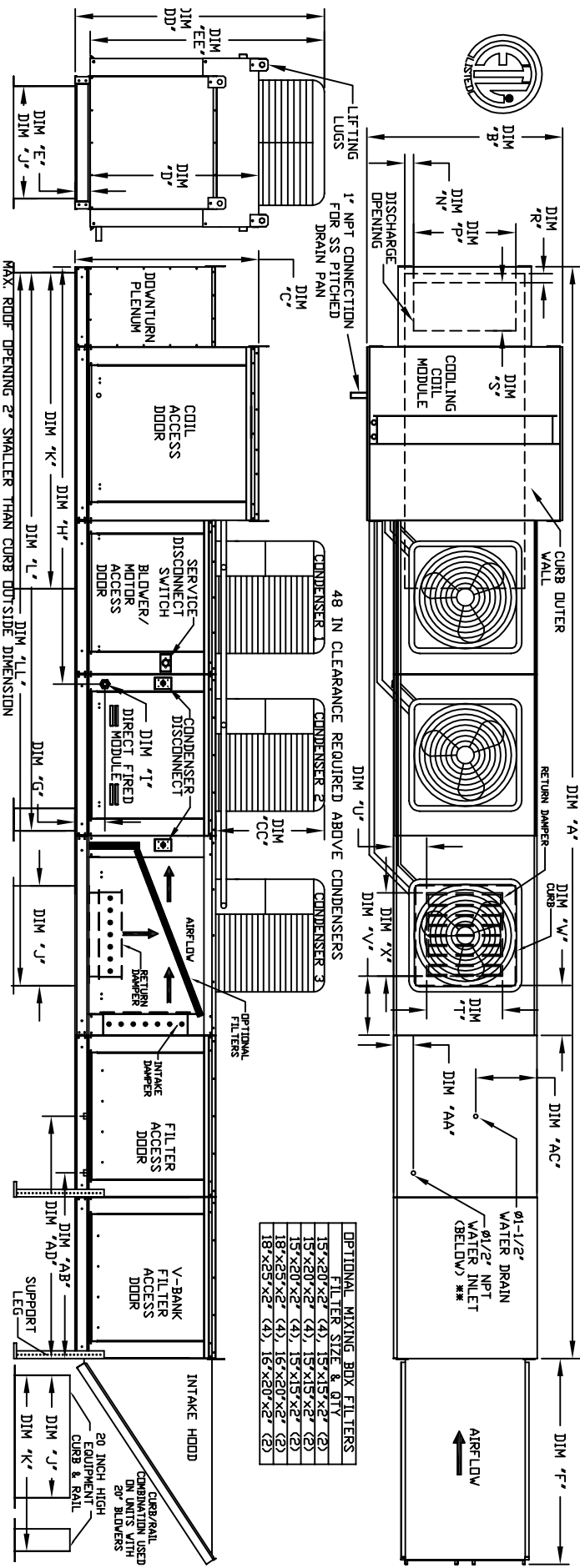


MODULAR OUTDOOR DOWN DISCHARGE DIRECT FIRED RECIRCULATING HEATER WITH COOLING, EVAPORATIVE COOLER INTAKE, V-BANK AND INTAKE HOOD

HWBCHDF54ACCP-4H-15
REV. A3 06/15/2015



OPTIONAL MIXING BOX FILTERS

FILTER SIZE & QTY
15'x20'x2" (4)
15'x15'x2" (2)
15'x20'x2" (4)
15'x15'x2" (2)
15'x20'x2" (4)
15'x15'x2" (2)
18'x25'x2" (4)
16'x20'x2" (2)
18'x25'x2" (4)
16'x20'x2" (2)

ALL DIMENSIONS ARE NOMINAL AND GIVEN IN INCHES.

MAX. ROOF OPENING 2" SMALLER THAN CURB DOTS SIDE DIMENSION

MODEL	A	B	C	D	E	F	G	H	J	K	L	M	N	P	Q	R	S	T	U	V	X	AA	AB	AC	AD
D-500-G18	27 3/4	54 3/8	56 3/8	51 1/8	51 1/4	51 5/8	9 1/2	114 1/4	35	84	150 5/8	190 1/4	6 5/16	22 3/8	18	28	8	7	30	4 1/2	44	20	57 1/4		
D-750-G18	42 1/2	84 3/8	86 3/8	81 1/8	81 1/4	81 5/8	9 1/2	114 1/4	35	84	150 5/8	190 1/4	6 5/16	22 3/8	18	28	8	7	30	4 1/2	44	20	57 1/4		
D-1000-G18	67 1/2	134 3/8	136 3/8	131 1/8	131 1/4	131 5/8	9 1/2	114 1/4	35	84	150 5/8	190 1/4	6 5/16	22 3/8	18	28	8	7	30	4 1/2	44	20	57 1/4		
D-1500-G20	98 1/4	194 3/8	196 3/8	191 1/8	191 1/4	191 5/8	9 1/2	114 1/4	35	84	150 5/8	190 1/4	6 5/16	22 3/8	18	28	8	7	30	4 1/2	44	20	57 1/4		
D-1500-920	38 1/4	60 1/16	64 3/8	59 1/8	51 1/4	76 3/8	13 9/16	151	42	113 3/16	199 7/8	247 7/8	5 1/4	3 1/2	23 1/2	23 1/2	33	10	11	36	4 1/2	41 1/8	23 1/2	152 7/8	

UNIT INFORMATION

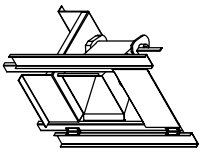
MODEL	BURNER LENGTH	BTU RANGE	CMBH	GAS PRESSURE		GAS CONNECTION	TONNAGE RANGE		FILTER SIZE & QTY		MAX. FILTER VELOCITY		STANDARD EVAPORATIVE COOLING UNIT		CELDK EVAPORATIVE COOLING UNIT							
				MIN	MAX		MIN	MAX	MIN	MAX	TOT. WEIGHT	HEAVY DUTY	TOT. WEIGHT	HEAVY DUTY								
D-500-G18	18"	18	550	7" VC	14" VC	1" (NPT)	15 TON	15 TON	15 TON	20'x25'x2" (8)	8000 CFM	348 FPM	2300 LBS	20'x25'x2" (8)	348 FPM	2290 LBS	30'x35'x12" (2)	1067 FPM	28	8.4 GPH	28	8.4 GPH
D-750-G18	18"	27.5	825	7" VC	14" VC	1" (NPT)	15 TON	15 TON	15 TON	20'x25'x2" (8)	8000 CFM	348 FPM	2300 LBS	20'x25'x2" (8)	348 FPM	2295 LBS	30'x35'x12" (2)	1067 FPM	28	8.4 GPH	28	8.4 GPH
D-1000-G18	24"	36.6	1100	7" VC	14" VC	1" (NPT)	15 TON	15 TON	15 TON	20'x25'x2" (8)	8000 CFM	348 FPM	2310 LBS	20'x25'x2" (8)	348 FPM	2310 LBS	30'x35'x12" (2)	1067 FPM	28	8.4 GPH	28	8.4 GPH
D-1500-G20	30"	45.8	1375	7" VC	14" VC	1" (NPT)	15 TON	15 TON	15 TON	20'x25'x2" (8)	8000 CFM	348 FPM	2360 LBS	20'x25'x2" (8)	348 FPM	3645 LBS	38'x43'x12" (2)	1322 FPM	35	10.15 GPH	35	10.15 GPH

CONDENSER INFORMATION

MODEL	WEIGHT#1	TONNAGE#1	WEIGHT#2	TONNAGE#2	WEIGHT#3	TONNAGE#3	CC	DD	EE
15 TON-G18	591 LBS	5 TON	5 TON	5 TON	5 TON	5 TON	32-13/16	76-3/16	70-7/8
15 TON-920	591 LBS	5 TON	5 TON	5 TON	5 TON	5 TON	32-13/16	97-3/16	91-15/16

R410A REFRIGERANT

Direct Fired Profile Plate Specifications
Direct fired burners shall have patented US Patent No. US6692928B, self-adjusting profile plates designed to ensure proper air velocity and pressure drop across the burner. Profile plates shall be made of carbon monoxide (CO) and oxygen (O2) and shall be made of a material that is resistant to corrosion.
Application:
Spring-loaded burner profile plates are engineered to automatically react to the momentum of a fresh air stream, without the need for any motors or actuators to mechanically adjust them. With this feature, all JP units are designed for demand control ventilation (DCV) requirements.
General Construction:
Profile plates shall be formed from G90 galvanized steel.
Profile plates shall be mounted along the same plane as the discharge of the burner.
Design shall incorporate properly torqued, permanently mounted spring hinges.



Direct Fired (DF) Profile Plate Assembly

MAX. EVAP WATER PRESSURE = 50 PSI @ 70 DEG. F