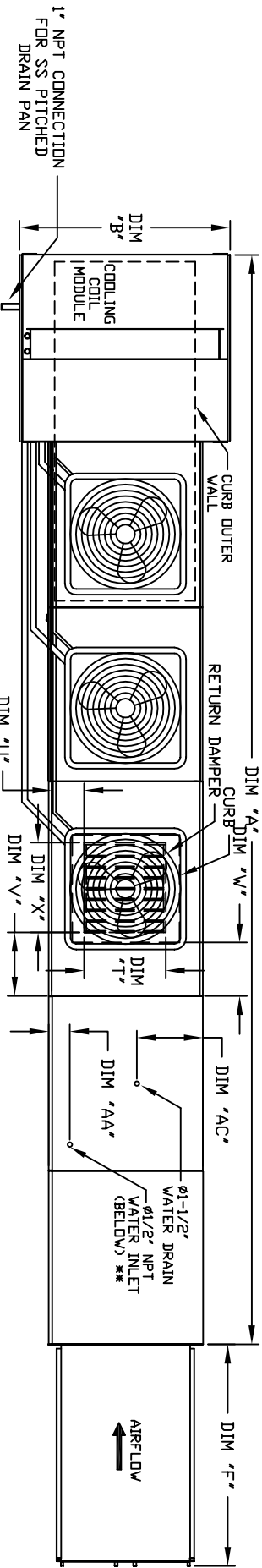
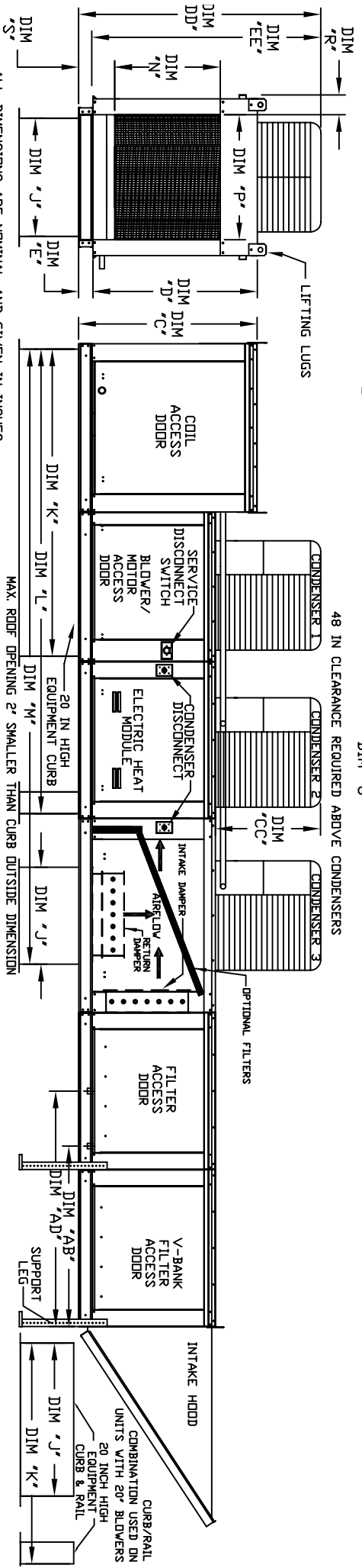


MODULAR OUTDOOR SIDE DISCHARGE ELECTRIC HEATER PACKAGED UNIT WITH COOLING, EVAPORATIVE COOLER INTAKE, V-BANK, MIXING BOX AND INTAKE HOOD



HW/RECHERS/ARC-490-15
REV#E 06/15/2015



ALL DIMENSIONS ARE NOMINAL AND GIVEN IN INCHES.

MAX. ROOF OPENING 2' SMALLER THAN CURB OUTSIDE DIMENSION

MODEL	A	B	C	D	E	F	J	K	L	M	N	P	R	S	T	U	V	X	AA	AB	AC	AD	AE
E3-G18	248-3/8	54-3/8	56-3/8	51-1/8	5-1/4	5-5/8	35	84	126-1/4	203-15/16	29-5/8	30	11-1/2	7-3/8	28	8	7	4-1/2	30	4-1/2	24	20	57-1/4
E4-920	297-7/8	60-7/16	64-3/8	59-1/8	5-1/4	7-6-3/8	42	115-3/16	169-1/2	252-13/16	36-3/4	34	12-1/2	7-3/8	33	10	11	8	36	4-1/2	24	20	57-1/4

MODEL	TONNAGE RANGE			STANDARD EVAPORATIVE COOLING UNIT			CELDICK EVAPORATIVE COOLING UNIT				
	MIN	RANGE	MAX	TOT. WEIGHT	ME.DIA SIZE & QTY	VEL. & MAX. CFM NOZZLES	MAX. FLOW RATE	TOT. WEIGHT	ME.DIA SIZE & QTY	VEL. & MAX. CFM NOZZLES	MAX. FLOW RATE
E3-G18	15 Ton	15 Ton	15 Ton	2165 LBS	20"x25"x2" (8)	348 FPM	14	2155 LBS	30"x36"x12"	1067 FPM	28
E4-920	15 Ton	15 Ton	15 Ton	3475 LBS	16"x20"x2" (15)	572 FPM	24	3445 LBS	38"x43"x12"	1322 FPM	35

ADD CONDENSING UNIT WEIGHT TO WEIGHT IN TABLE ABOVE *** MAX EVAP WATER PRESSURE = 50 PSI @ 70 DEG F

MODEL	CONDENSER INFORMATION			CC	DD	EE
	WEIGHT#	#1	#2			
15 TON-G18/S91	LBS	5 TON	5 TON	32-13/16	76-3/16	70-7/8
15 TON-920/S91	LBS	5 TON	5 TON	32-13/16	97-3/16	91-5/16

MAX. WATER PRESSURE