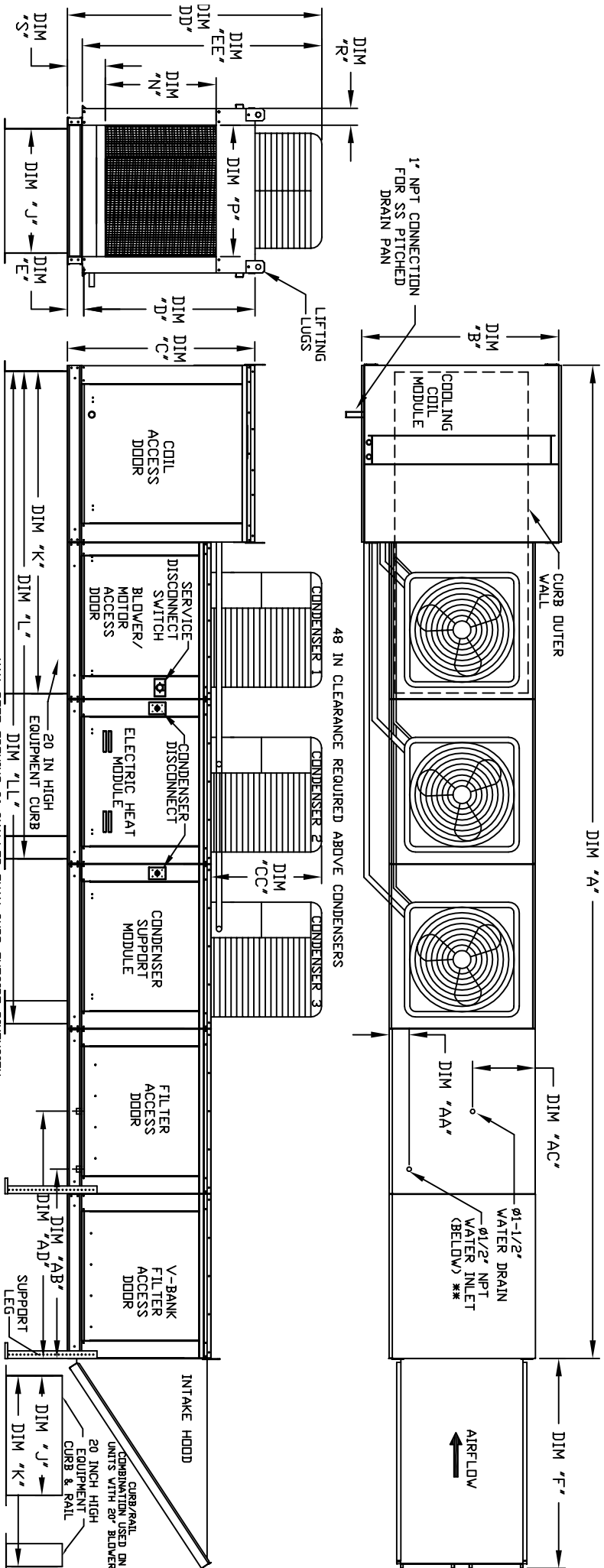


MODULAR OUTDOOR SIDE DISCHARGE ELECTRIC HEATER PACKAGED UNIT WITH COOLING, EVAPORATIVE COOLER INTAKE, V-BANK AND INTAKE HOOD

1HVBECHSAHC-RW-15  
REV. A2 06/15/2015



ALL DIMENSIONS ARE NOMINAL AND GIVEN IN INCHES.

MODEL	UNIT DIMENSIONS				CURB/RAIL				DISCHARGE OPENING				WATER INLET DRAIN OPENING				MAX. FILTER VELOCITY			
	A	B	C	D	E	F	J	K	L	LL	N	P	R	S	AA	AB		AC	AD	
E3-G18	248-3/8	54-3/8	56-3/8	51-1/8	5-1/4	51-5/8	35	64	126-1/4	128-1/2	29-5/8	30	11-1/2	7-3/8	4-1/2	44	20	57-1/4	20"x25"x2" (8)	8000 CFM = 348 FPM
E4-920	297-7/8	60-7/16	64-3/8	59-1/8	5-1/4	76-3/8	42	115-3/16	169-1/2	223-13/16	36-3/4	34	12-1/2	7-3/8	4-1/2	44	20	57-1/4	20"x25"x2" (8)	13000 CFM = 495 FPM

UNIT INFORMATION:

MODEL	TONNAGE RANGE		STANDARD EVAPORATIVE COOLING UNIT				CELDER EVAPORATIVE COOLING UNIT					
	MIN	MAX	TOT. WEIGHT	HEIDA SIZE & QTY	VEL. @ MAX. CFM	NOZZLES	MAX. FLOW RATE	TOT. WEIGHT	HEIDA SIZE & QTY	VEL. @ MAX. CFM	NOZZLES	MAX. FLOW RATE
E3-G18	15 Ton	15 Ton	1895 LBS	20"x25"x2" (8)	348 FPM	14	7 GPH	1885 LBS	30"x36"x12"	1067 FPM	28	8.4 GPH
E4-920	15 Ton	15 Ton	3015 LBS	16"x20"x2" (15)	572 FPM	24	12 GPH	2985 LBS	38"x43"x12"	1322 FPM	35	10.15 GPH

\*ADD CONDENSING UNIT WEIGHT TO WEIGHT IN TABLE ABOVE \*\* MAX EVAP WATER PRESSURE = 50 PSI @ 70 DEG F

MODEL	CONDENSER INFORMATION			TONNAGE			CC	DD	EE
	WEIGHT*	#1	#2	#1	#2	#3			
15 TON-G18	591 LBS	5	5	5	5	5	32-13/16	76-3/16	70-7/8
15 TON-920	591 LBS	5	5	5	5	5	32-13/16	97-3/16	91-15/16