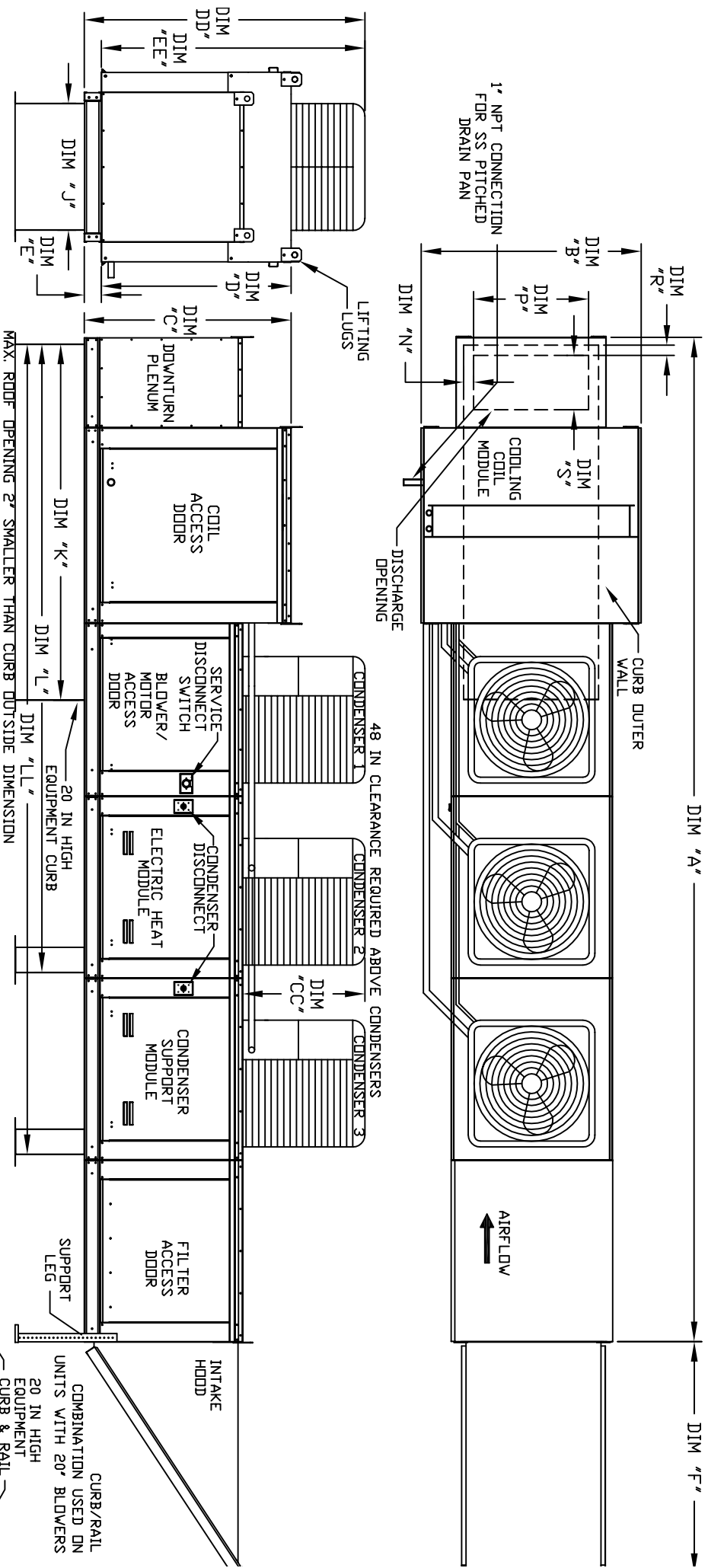


MODULAR OUTDOOR DOWN DISCHARGE ELECTRIC HEATER PACKAGED UNIT WITH COOLING, V-BANK AND INTAKE HOOD

IHV/REHSAHCDP-MRU-15
REV. A.3 06/15/2015



ALL DIMENSIONS ARE NOMINAL AND GIVEN IN INCHES.

MAX. ROOF OPENING 2\"/>

MODEL	WEIGHT	UNIT DIMENSIONS											CURB/RAIL		DISCHARGE OPENING				
		A	B	C	D	E	F	J	K	L	LL	N	P	R	S				
E3-G18	1795 LBS	234-1/2	54-3/8	56-3/8	51-1/8	51-1/4	51-5/8	35	84	150-5/8	192-7/8	8-7/8	22-3/8	3	18				
E4-920	2875 LBS	292-7/8	60-7/16	64-3/8	59-1/8	51-1/4	76-3/8	42	115-3/16	199-13/16	254-1/8	7-7/8	31-1/2	3-1/4	23-1/2				

UNIT INFORMATION:

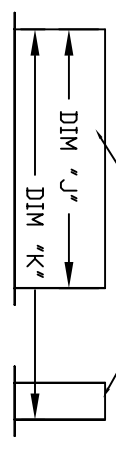
MODEL	TONNAGE RANGE			FILTERS	
	MIN	MAX	FILTER SIZE & QTY	MAX. FILTER VELOCITY	
E3-G18	15 Ton	15 Ton	20"x25"x2" (8)	@8000 CFM = 348 FPM	
E4-920	15 Ton	15 Ton	16"x20"x2" (15)	@13000 CFM = 495 FPM	

*ADD CONDENSING UNIT WEIGHT TO WEIGHT IN TABLE ABOVE

CONDENSER INFORMATION

MODEL	WEIGHT*	TONNAGE			CC	DD	EE
		#1	#2	#3			
15 TON-G18	591 LBS	5 TON	5 TON	5 TON	32-13/16	76-3/16	70-7/8
15 TON-920	591 LBS	5 TON	5 TON	5 TON	32-13/16	97-3/16	91-15/16

DATA DERIVED FROM



COMBINATION USED ON UNITS WITH 20\"/>