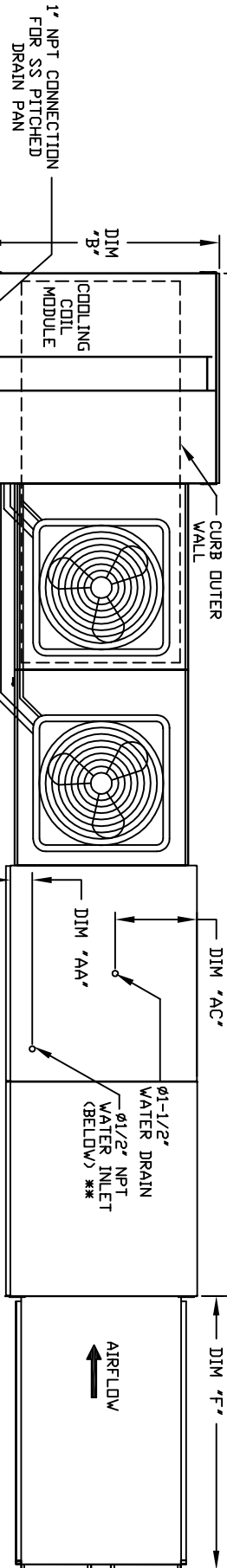




MODULAR OUTDOOR SIDE DISCHARGE DIRECT FIRED HEATER PACKAGED UNIT WITH COOLING, LPD EVAPORATIVE COOLER INTAKE, V-BANK AND INTAKE HOOD

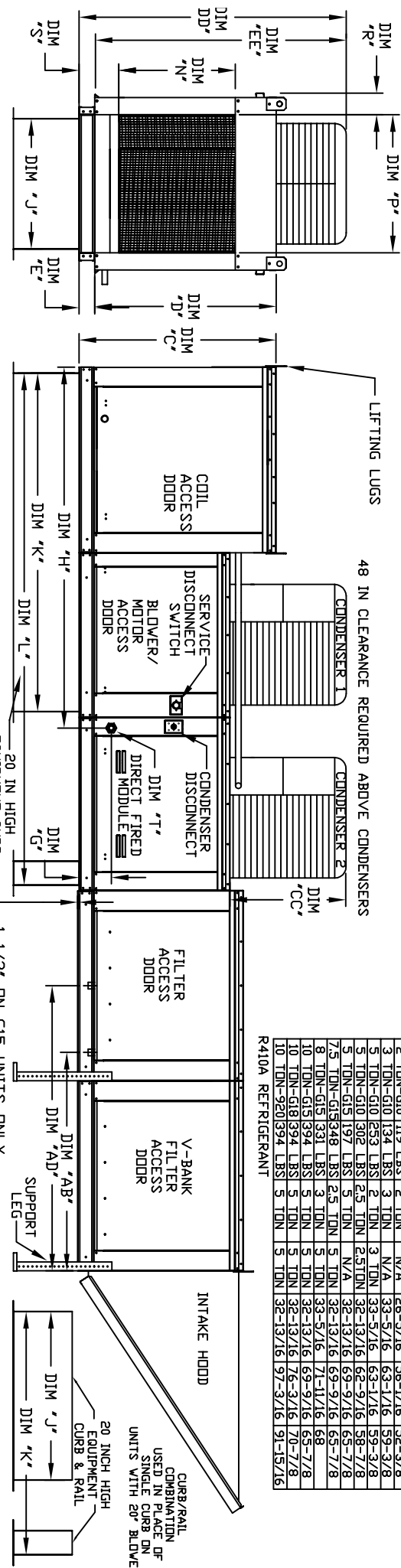
HW/ALP/RCDF-SMCC-HEU
REV/A3 06/15/2015



48 IN CLEARANCE REQUIRED ABOVE CONDENSERS

CONDENSER INFORMATION		TONNAGE		CC	DD	EE
MODEL	WEIGHT*	#1	#2			
2 TON-G10	119 LBS	2 TON	N/A	26-5/16	56-1/16	52-3/8
3 TON-G10	134 LBS	3 TON	N/A	33-5/16	63-1/16	59-3/8
5 TON-G10	253 LBS	2 TON	3 TON	33-5/16	63-1/16	59-3/8
5 TON-G10	502 LBS	2.5 TON	2.5 TON	32-13/16	62-9/16	58-7/8
5 TON-G10	197 LBS	5 TON	N/A	32-13/16	62-9/16	58-7/8
7.5 TON-G15	348 LBS	2.5 TON	5 TON	32-13/16	62-9/16	58-7/8
8 TON-G15	331 LBS	3 TON	5 TON	33-5/16	63-1/16	59-3/8
10 TON-G15	394 LBS	5 TON	5 TON	32-13/16	62-9/16	58-7/8
10 TON-G18	394 LBS	5 TON	5 TON	32-13/16	62-9/16	58-7/8
10 TON-G20	394 LBS	5 TON	5 TON	32-13/16	62-9/16	58-7/8
10 TON-G20	394 LBS	5 TON	5 TON	32-13/16	62-9/16	58-7/8

R410A REFRIGERANT



ALL DIMENSIONS ARE NOMINAL AND GIVEN IN INCHES.

20 INCH HIGH EQUIPMENT CURB

1-1/2" DN G15 UNITS ONLY

FILTER ACCESS DOOR

INTAKE HOOD

MODEL	A		B		C		D		E		F		G		H		J		K		L		N		P		R		S		AA		AB		AD		AE				
	MIN	MAX	MIN	MAX	MIN	MAX	MIN	MAX	MIN	MAX	MIN	MAX	MIN	MAX	MIN	MAX	MIN	MAX	MIN	MAX	MIN	MAX	MIN	MAX	MIN	MAX	MIN	MAX	MIN	MAX	MIN	MAX	MIN	MAX	MIN	MAX					
D1250-G10	181-1/8	181-1/8	39-3/8	42-3/4	39	3-3/4	53-5/8	7-13/16	77-1/16	21	71	113-1/4	17-1/2	16	11	5-3/4	4-1/2	38-1/2	18	48-1/4	16	16	16	16	16	16	16	16	16	16	16	16	16	16	16	16	16	16	16	16	
D500-G10	181-1/8	181-1/8	39-3/8	42-3/4	39	3-3/4	53-5/8	7-13/16	77-1/16	21	71	113-1/4	17-1/2	16	11	5-3/4	4-1/2	38-1/2	18	48-1/4	16	16	16	16	16	16	16	16	16	16	16	16	16	16	16	16	16	16	16	16	16
D250-G15	201-1/8	201-1/8	49-3/8	47-3/4	44	3-3/4	51-5/8	7-13/16	85-1/16	31	79	121-1/4	29-3/4	22-3/4	12-5/8	5-3/4	4-1/2	44	20	57-1/4	20	20	20	20	20	20	20	20	20	20	20	20	20	20	20	20	20	20	20	20	20
D500-G15	201-1/8	201-1/8	49-3/8	47-3/4	44	3-3/4	51-5/8	7-13/16	85-1/16	31	79	121-1/4	29-3/4	22-3/4	12-5/8	5-3/4	4-1/2	44	20	57-1/4	20	20	20	20	20	20	20	20	20	20	20	20	20	20	20	20	20	20	20	20	20
D750-G15	201-1/8	201-1/8	49-3/8	47-3/4	44	3-3/4	51-5/8	7-13/16	85-1/16	31	79	121-1/4	29-3/4	22-3/4	12-5/8	5-3/4	4-1/2	44	20	57-1/4	20	20	20	20	20	20	20	20	20	20	20	20	20	20	20	20	20	20	20	20	20
D1000-G18	243-9/16	243-9/16	60-7/16	64-3/8	55-1/8	5-1/4	76-3/8	9-1/2	90-1/16	35	84	126-1/4	29-5/8	30	11-1/2	7-3/8	4-1/2	41-1/8	23-1/2	52-7/8	16	16	16	16	16	16	16	16	16	16	16	16	16	16	16	16	16	16	16	16	
D1500-G20	243-9/16	243-9/16	60-7/16	64-3/8	55-1/8	5-1/4	76-3/8	9-1/2	90-1/16	35	84	126-1/4	29-5/8	30	11-1/2	7-3/8	4-1/2	41-1/8	23-1/2	52-7/8	16	16	16	16	16	16	16	16	16	16	16	16	16	16	16	16	16	16	16	16	16

MODEL	A		B		C		D		E		F		G		H		J		K		L		N		P		R		S		AA		AB		AD		AE	
	MIN	MAX	MIN	MAX	MIN	MAX	MIN	MAX	MIN	MAX	MIN	MAX	MIN	MAX	MIN	MAX	MIN	MAX	MIN	MAX	MIN	MAX	MIN	MAX	MIN	MAX	MIN	MAX	MIN	MAX	MIN	MAX	MIN	MAX	MIN	MAX		
D1250-G10	18	27.5	7"	7"	14"	14"	3/4"	3/4"	2	2	5	5	5	5	5	5	5	5	5	5	5	5	5	5	5	5	5	5	5	5	5	5	5	5	5	5	5	5
D250-G15	18	27.5	7"	7"	14"	14"	3/4"	3/4"	2	2	5	5	5	5	5	5	5	5	5	5	5	5	5	5	5	5	5	5	5	5	5	5	5	5	5	5	5	5
D500-G15	18	27.5	7"	7"	14"	14"	3/4"	3/4"	2	2	5	5	5	5	5	5	5	5	5	5	5	5	5	5	5	5	5	5	5	5	5	5	5	5	5	5	5	5
D750-G15	18	27.5	7"	7"	14"	14"	3/4"	3/4"	2	2	5	5	5	5	5	5	5	5	5	5	5	5	5	5	5	5	5	5	5	5	5	5	5	5	5	5	5	5
D1000-G18	18	27.5	7"	7"	14"	14"	3/4"	3/4"	2	2	5	5	5	5	5	5	5	5	5	5	5	5	5	5	5	5	5	5	5	5	5	5	5	5	5	5	5	5
D1500-G20	18	27.5	7"	7"	14"	14"	3/4"	3/4"	2	2	5	5	5	5	5	5	5	5	5	5	5	5	5	5	5	5	5	5	5	5	5	5	5	5	5	5	5	

UNIT INFORMATION

BURNER BTU RANGE (KMB) GAS PRESSURE GAS CONNECTION TONNAGE RANGE

LENGTH BTU LOW BTU HIGH MIN MAX

MODEL A B C D E F G H J K L N P R S AA AB AD AE

CELDEK EVAPORATIVE COOLING UNIT

TOT WEIGHT MEDIA SIZE & QTY NOZZLES MAX FLOW RATE

1280 LBS 25"X32"X12" 20 6.5 GPH

1285 LBS 25"X32"X12" 20 6.5 GPH

1635 LBS 30"X36"X12" 28 8.4 GPH

1650 LBS 30"X36"X12" 28 8.4 GPH

1700 LBS 30"X36"X12" 28 8.4 GPH

2130 LBS 38"X43"X12" 35 10.15 GPH

2150 LBS 38"X43"X12" 35 10.15 GPH

2140 LBS 38"X43"X12" 35 10.15 GPH

3090 LBS 45"X54"X12" 42 12.6 GPH

3105 LBS 45"X54"X12" 42 12.6 GPH

Direct Fired Profile Plate Specifications

Direct fired burners shall have patented (US Patent No. US6695323B3), self-adjusting profile plates designed to ensure proper air velocity and pressure drop across the burner. Profile plates shall be fabricated from 304 stainless steel. Burner orifices shall be laser cut and shall be 0.003" thick.

Application: Profile plates are engineered to automatically react to the momentum of a fresh air stream, without the need for any motors or actuators to mechanically adjust them. With this feature, all DF units are designed for demand control ventilation (DCV) requirements.

Certifications: All profile plate assemblies shall be included in the DF unit's ETL listing and comply with combined gas and electrical code requirements.

General Construction: Profile plates shall be formed from 304 galvanized steel.

Profile plates shall vary in size per unit.

Profile plates shall be mounted along the same plane as the discharge of the burner.

Design shall incorporate proprietary torqued, permanently mounted spring hinges.

Spring tension shall be made from stainless steel.

