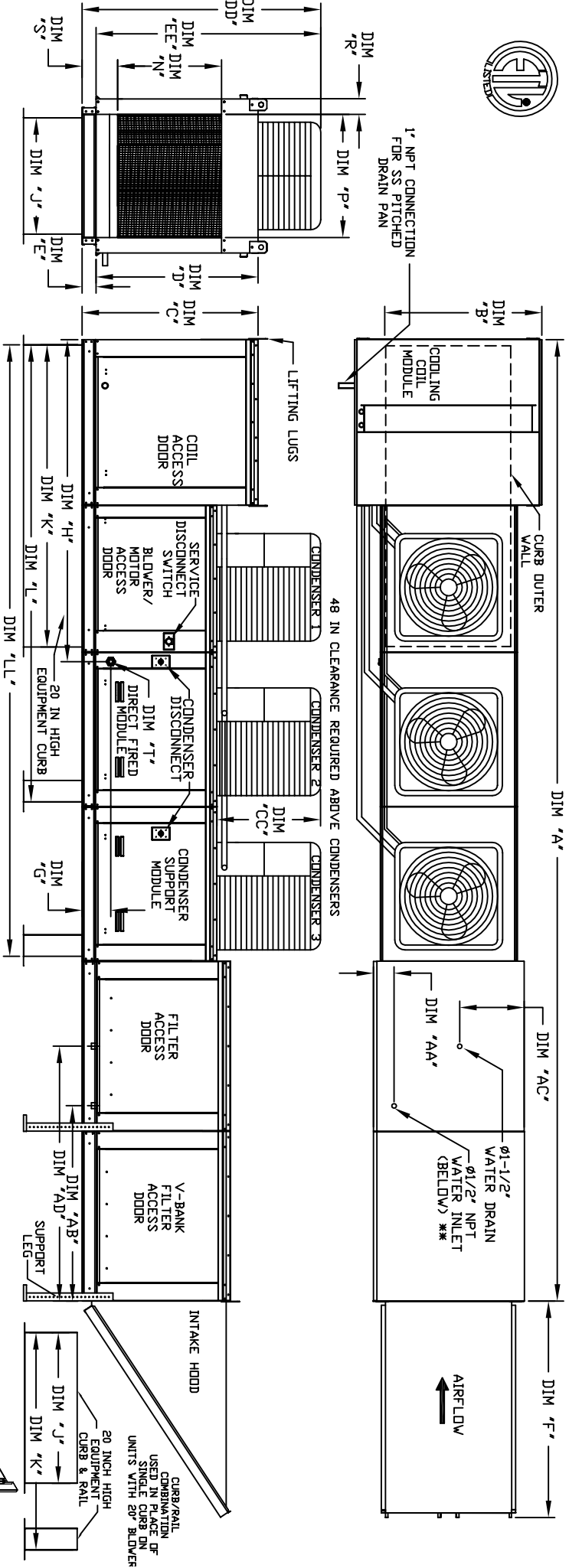


MODULAR OUTDOOR SIDE DISCHARGE DIRECT FIRED HEATER PACKAGED UNIT WITH COOLING, LPD EVAPORATIVE COOLER INTAKE, V-BANK AND INTAKE HOOD



ALL DIMENSIONS ARE NOMINAL AND GIVEN IN INCHES.

MODEL	UNIT DIMENSIONS											
	A	B	C	D	E	F	G	H	I	J	K	L
D-500-G18	24.2	57/8	54-3/8	56-3/8	51-1/8	5-1/4	76-3/8	9-1/2	90-1/16	35	84	126-1/4
D-750-G18	24.2	57/8	54-3/8	56-3/8	51-1/8	5-1/4	76-3/8	9-1/2	90-1/16	35	84	126-1/4
D-1000-G18	24.2	57/8	54-3/8	56-3/8	51-1/8	5-1/4	76-3/8	9-1/2	90-1/16	35	84	126-1/4
D-1500-G18	24.2	57/8	54-3/8	56-3/8	51-1/8	5-1/4	76-3/8	9-1/2	90-1/16	35	84	126-1/4
D-1000-920	24.2	57/8	54-3/8	56-3/8	51-1/8	5-1/4	76-3/8	9-1/2	90-1/16	35	84	126-1/4
D-1500-920	24.2	57/8	54-3/8	56-3/8	51-1/8	5-1/4	76-3/8	9-1/2	90-1/16	35	84	126-1/4

MODEL	UNIT INF ORAVATION												
	BURNER	BTU RANGE	QMBH	GAS PRESSURE			GAS CONNECTION			TONNAGE RANGE			
	LENGTH	BTU LOW	BTU HIGH	MIN	MAX	"I" (NPT)	"J" (NPT)	MIN	MAX	MIN	MAX		
D-500-G18	18"	550	77	VC 14"	WC	1	15	10N	15	TON	15	TON	
D-750-G18	18"	825	77	VC 14"	WC	1	15	10N	15	TON	15	TON	
D-1000-G18	24"	36.6	1100	77	VC 14"	WC	1	15	10N	15	TON	15	TON
D-1500-920	30"	45.8	1375	77	VC 5	PSI	1-1/4	15	10N	15	TON	15	TON

MODEL	CONDENSER INFORMATION			CC	DD	EE
	WEIGHT #1	TUNNAGE	#3			
15 TON-G18	591	5 TON	5 TON	32-13/16	76-3/16	70-7/8
15 TON-920	591	5 TON	5 TON	32-13/16	97-3/16	91-15/16

MODEL	CONDENSER INFORMATION											
	TON	WEIGHT	MEDIA SIZE	QTY	NOZZLES	MAX. FLOW RATE						
D-500-G18	1.4	1.4	38"x43"x12"	35	10.15	GPH						
D-750-G18	2.1	2.1	38"x43"x12"	35	10.15	GPH						
D-1000-G18	3.1	3.1	38"x43"x12"	35	10.15	GPH						
D-1500-920	4.5	4.5	38"x43"x12"	42	12.6	GPH						

MODEL	CONDENSING UNIT WEIGHT TO WEIGHT IN TABLE ABOVE											
	TON	WEIGHT	MEDIA SIZE	QTY	NOZZLES	MAX. FLOW RATE						
D-500-G18	1.4	1.4	38"x43"x12"	35	10.15	GPH						
D-750-G18	2.1	2.1	38"x43"x12"	35	10.15	GPH						
D-1000-G18	3.1	3.1	38"x43"x12"	35	10.15	GPH						
D-1500-920	4.5	4.5	38"x43"x12"	42	12.6	GPH						

MODEL	CONDENSING UNIT WEIGHT TO WEIGHT IN TABLE ABOVE											
	TON	WEIGHT	MEDIA SIZE	QTY	NOZZLES	MAX. FLOW RATE						
D-500-G18	1.4	1.4	38"x43"x12"	35	10.15	GPH						
D-750-G18	2.1	2.1	38"x43"x12"	35	10.15	GPH						
D-1000-G18	3.1	3.1	38"x43"x12"	35	10.15	GPH						
D-1500-920	4.5	4.5	38"x43"x12"	42	12.6	GPH						

MODEL	CONDENSING UNIT WEIGHT TO WEIGHT IN TABLE ABOVE											
	TON	WEIGHT	MEDIA SIZE	QTY	NOZZLES	MAX. FLOW RATE						
D-500-G18	1.4	1.4	38"x43"x12"	35	10.15	GPH						
D-750-G18	2.1	2.1	38"x43"x12"	35	10.15	GPH						
D-1000-G18	3.1	3.1	38"x43"x12"	35	10.15	GPH						
D-1500-920	4.5	4.5	38"x43"x12"	42	12.6	GPH						

MODEL	CONDENSING UNIT WEIGHT TO WEIGHT IN TABLE ABOVE											
	TON	WEIGHT	MEDIA SIZE	QTY	NOZZLES	MAX. FLOW RATE						
D-500-G18	1.4	1.4	38"x43"x12"	35	10.15	GPH						
D-750-G18	2.1	2.1	38"x43"x12"	35	10.15	GPH						
D-1000-G18	3.1	3.1	38"x43"x12"	35	10.15	GPH						
D-1500-920	4.5	4.5	38"x43"x12"	42	12.6	GPH						

MODEL	CONDENSING UNIT WEIGHT TO WEIGHT IN TABLE ABOVE											
	TON	WEIGHT	MEDIA SIZE	QTY	NOZZLES	MAX. FLOW RATE						
D-500-G18	1.4	1.4	38"x43"x12"	35	10.15	GPH						
D-750-G18	2.1	2.1	38"x43"x12"	35	10.15	GPH						
D-1000-G18	3.1	3.1	38"x43"x12"	35	10.15	GPH						
D-1500-920	4.5	4.5	38"x43"x12"	42	12.6	GPH						

MODEL	CONDENSING UNIT WEIGHT TO WEIGHT IN TABLE ABOVE											
	TON	WEIGHT	MEDIA SIZE	QTY	NOZZLES	MAX. FLOW RATE						
D-500-G18	1.4	1.4	38"x43"x12"	35	10.15	GPH						
D-750-G18	2.1	2.1	38"x43"x12"	35	10.15	GPH						
D-1000-G18	3.1	3.1	38"x43"x12"	35	10.15	GPH						
D-1500-920	4.5	4.5	38"x43"x12"	42	12.6	GPH						

MODEL	CONDENSING UNIT WEIGHT TO WEIGHT IN TABLE ABOVE											
	TON	WEIGHT	MEDIA SIZE	QTY	NOZZLES	MAX. FLOW RATE						
D-500-G18	1.4	1.4	38"x43"x12"	35	10.15	GPH						
D-750-G18	2.1	2.1	38"x43"x12"	35	10.15	GPH						
D-1000-G18	3.1	3.1	38"x43"x12"	35	10.15	GPH						
D-1500-920	4.5	4.5	38"x43"x12"	42	12.6	GPH						