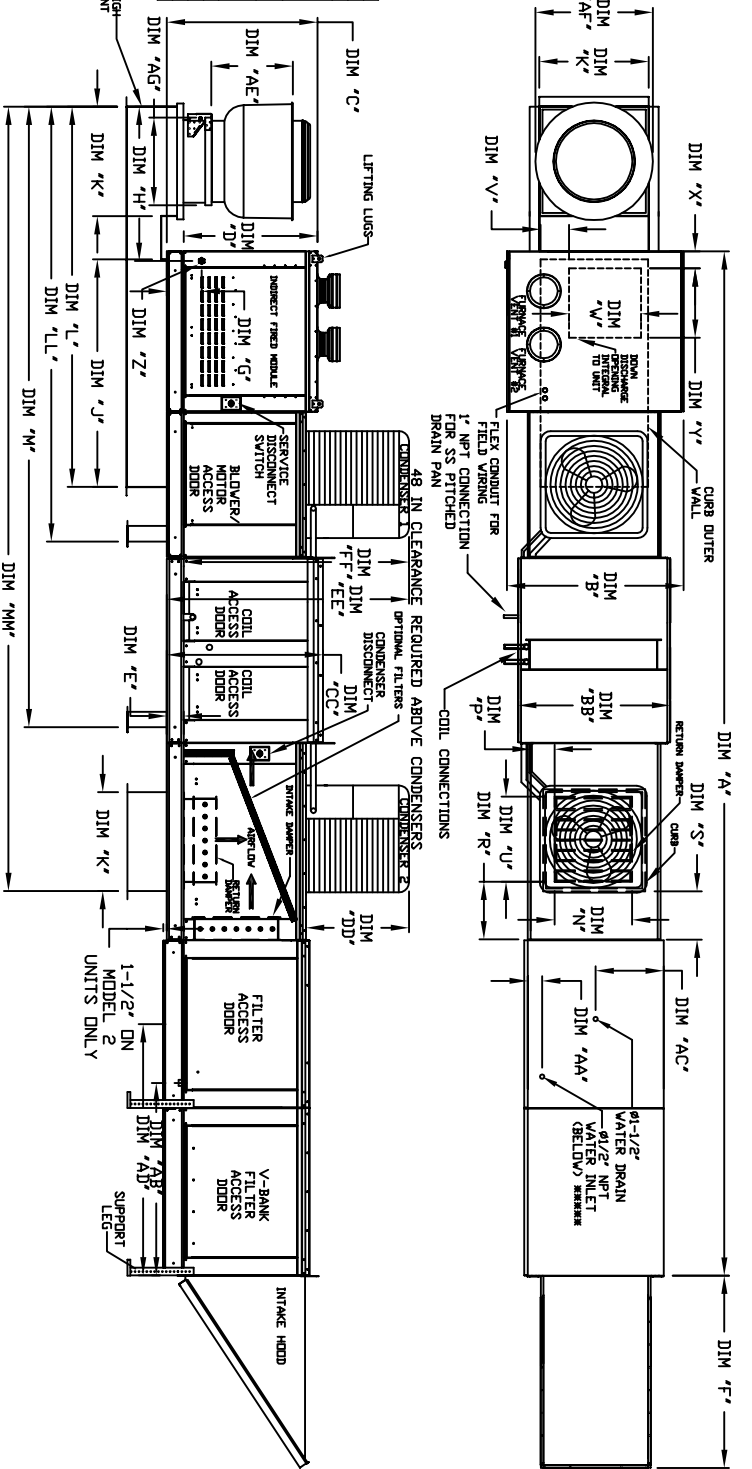




ENVIRONMENTAL & ENERGY DIVISION
REV. 10/80 607578003

MODEL #	AE	AF	AG	BE
1-1/2" DN	22	22	19	19
MODEL #	AE	AF	AG <td>BE</td>	BE
1-1/2" DN	21	21	18	18
2" DN	21-1/4	27-1/4	21	21
3" DN	21-1/2	30-1/4	21	21
4" DN	23	33-3/4	24-3/4	24-3/4
5" DN	23-1/2	39-3/8	28	28
6" DN	23-1/2	38-7/8	28	28
7" DN	30-5/8	43-3/8	33	33
8" DN	30-5/8	43-3/8	33	33
9" DN	33-1/2	50-3/4	40	40



ALL DIMENSIONS ARE NOMINAL AND GIVEN IN INCHES.

MAX. ROOF OPENING 2" SMALLER THAN CURB OUTSIDE DIMENSION

MODEL	UNIT DIMENSIONS		CURB EXTERIOR HEIGHT		CURB EXTERIOR WIDTH		CURB EXTERIOR DEPTH		CURB EXTERIOR WEIGHT	
	A	B	C	D	E	F	G	H	I	J
1-1/2" DN	22	22	19	19	22	22	19	19	33	33
2" DN	21	21	18	18	21	21	18	18	40	40
3" DN	21-1/4	27-1/4	21	21	21-1/4	27-1/4	21	21	50-3/4	50-3/4
4" DN	23	33-3/4	24-3/4	24-3/4	23	33-3/4	24-3/4	24-3/4	65-7/8	65-7/8
5" DN	23-1/2	39-3/8	28	28	23-1/2	39-3/8	28	28	81-1/8	81-1/8
6" DN	23-1/2	38-7/8	28	28	23-1/2	38-7/8	28	28	81-1/8	81-1/8
7" DN	30-5/8	43-3/8	33	33	30-5/8	43-3/8	33	33	105-1/2	105-1/2
8" DN	30-5/8	43-3/8	33	33	30-5/8	43-3/8	33	33	105-1/2	105-1/2
9" DN	33-1/2	50-3/4	40	40	33-1/2	50-3/4	40	40	133	133

MODEL	BURNER	VENT	TURNDOWN	COMBUSTION	GAS PRESSURE	INPUT	OUTPUT	EFFICIENCY	NET WEIGHT	NET WEIGHT
1-1/2" DN	1.0	1.0	6.0	LOW	5.0	6.5	8.5	80%	33	43
2" DN	1.0	1.0	6.0	LOW	5.0	6.5	8.5	80%	40	50
3" DN	1.0	1.0	6.0	LOW	5.0	6.5	8.5	80%	50-3/4	65-7/8
4" DN	1.0	1.0	6.0	LOW	5.0	6.5	8.5	80%	65-7/8	81-1/8
5" DN	1.0	1.0	6.0	LOW	5.0	6.5	8.5	80%	81-1/8	97-1/8
6" DN	1.0	1.0	6.0	LOW	5.0	6.5	8.5	80%	81-1/8	97-1/8
7" DN	1.0	1.0	6.0	LOW	5.0	6.5	8.5	80%	105-1/2	121-1/2
8" DN	1.0	1.0	6.0	LOW	5.0	6.5	8.5	80%	105-1/2	121-1/2
9" DN	1.0	1.0	6.0	LOW	5.0	6.5	8.5	80%	133	149

MODEL	WATER INLET	WATER OUTLET	WATER INLET	WATER OUTLET	WATER INLET	WATER OUTLET
1-1/2" DN	1/2"	1/2"	1/2"	1/2"	1/2"	1/2"
2" DN	1/2"	1/2"	1/2"	1/2"	1/2"	1/2"
3" DN	1/2"	1/2"	1/2"	1/2"	1/2"	1/2"
4" DN	1/2"	1/2"	1/2"	1/2"	1/2"	1/2"
5" DN	1/2"	1/2"	1/2"	1/2"	1/2"	1/2"
6" DN	1/2"	1/2"	1/2"	1/2"	1/2"	1/2"
7" DN	1/2"	1/2"	1/2"	1/2"	1/2"	1/2"
8" DN	1/2"	1/2"	1/2"	1/2"	1/2"	1/2"
9" DN	1/2"	1/2"	1/2"	1/2"	1/2"	1/2"

* ADD CONDENSING UNIT WEIGHT TO WEIGHT IN TABLE ABOVE
 ** ALL MODELS ARE FULLY ELECTRONICALLY MODULATING
 *** COMBUSTION EFFICIENCY OF EVERY UNIT IS 80% DVEF THE ENTIRE GAS FIRING RANGE.
 ***** GAS PRESSURES IN TABLE ARE FOR NATURAL GAS. LP MINIMUM GAS INLET PRESSURE = 11" W.C.
 ***** MAX. EVAP WATER PRESSURE = 50 PSI @ 70 DEG. F
 ***** 9 INCH HIGH EXHAUST ADAPTER