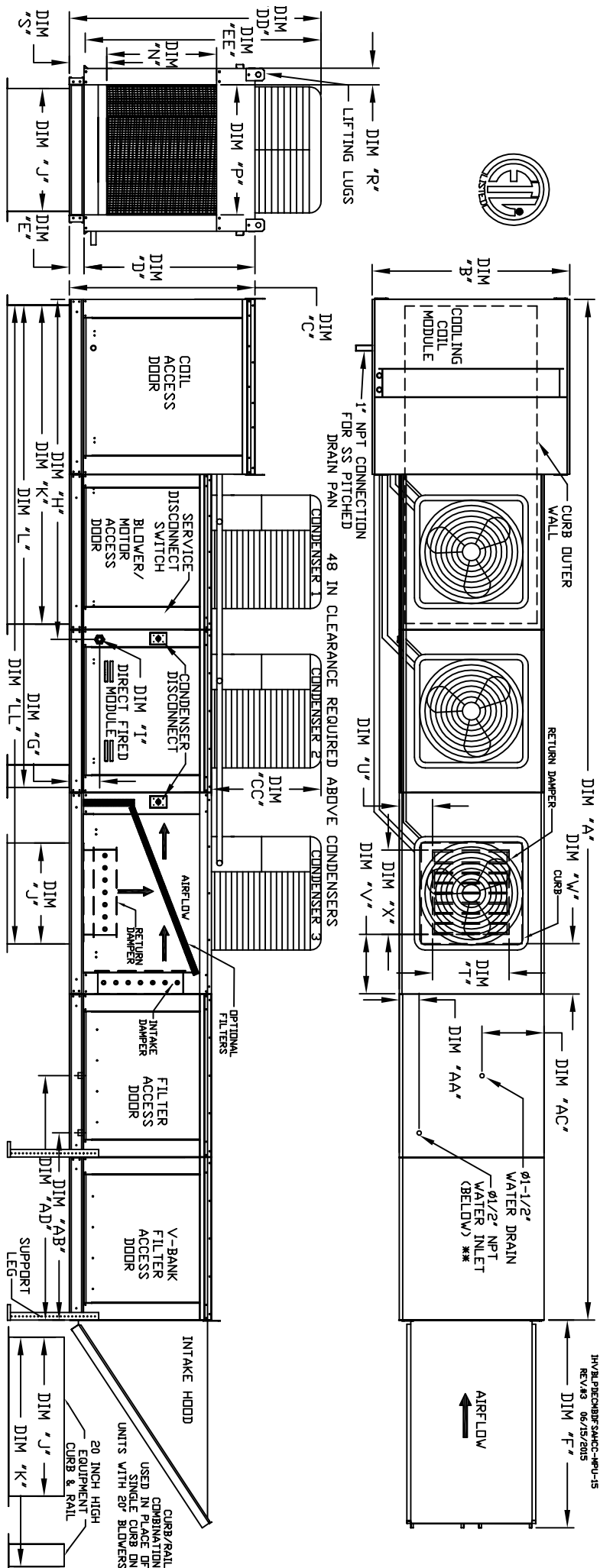


MODULAR OUTDOOR SIDE DISCHARGE DIRECT FIRED RECIRCULATING HEATER WITH COOLING, LPD EVAPORATIVE COOLER INTAKE, V-BANK AND INTAKE HOOD

1/4" BOLT CONNECTIONS
REV. 03 06/15/2015



ALL DIMENSIONS ARE NOMINAL AND GIVEN IN INCHES.

MODEL	UNIT DIMENSIONS																								
	A	B	C	D	E	F	G	H	J	K	L	N	P	R	S	T	U	V	X	AA	AB	AC	AD		
D-500-G18	242	5-7/8	54-3/8	56-3/8	51-1/8	5-1/4	76-3/8	9-1/2	90-1/16	35	84	126-1/4	203-15/16	29-5/8	30	11-1/2	7-3/8	28	8	7	30	4-1/2	41-1/8	23-1/2	52-7/8
D-750-G18	242	5-7/8	54-3/8	56-3/8	51-1/8	5-1/4	76-3/8	9-1/2	90-1/16	35	84	126-1/4	203-15/16	29-5/8	30	11-1/2	7-3/8	28	8	7	30	4-1/2	41-1/8	23-1/2	52-7/8
D-1000-G18	242	5-7/8	54-3/8	56-3/8	51-1/8	5-1/4	76-3/8	9-1/2	90-1/16	35	84	126-1/4	203-15/16	29-5/8	30	11-1/2	7-3/8	28	8	7	30	4-1/2	41-1/8	23-1/2	52-7/8
D-1000-920	297	7-7/8	60-7/16	64-3/8	59-1/8	5-1/4	71-3/8	13-9/16	120-5/8	42	115-3/16	169-1/2	252-7/8	36-3/4	34	12-1/2	7-3/8	33	10	11	36	4-1/2	41-1/8	28-7/8	52-7/8
D-1500-920	297	7-7/8	60-7/16	64-3/8	59-1/8	5-1/4	71-3/8	13-9/16	120-5/8	42	115-3/16	169-1/2	252-7/8	36-3/4	34	12-1/2	7-3/8	33	10	11	36	4-1/2	41-1/8	28-7/8	52-7/8

MODEL	BURNER BTU RANGE (GBH)		GAS PRESSURE		GAS CONNECTION		TONNAGE RANGE	
	BTU LOW	BTU HIGH	MIN	MAX	"r" (NPT)	MIN	MAX	
D-500-G18	12"	18"	5.50	7"	1/4"	15 TON	15 TON	
D-750-G18	18"	27.5"	8.25	7"	1/4"	15 TON	15 TON	
D-1000-G18	24"	36.6"	11.00	7"	1/4"	15 TON	15 TON	
D-1000-920	30"	43.8"	13.75	7"	1/4"	15 TON	15 TON	

MODEL	CONDENSER INFORMATION			CC	DD	EE	
	WEIGHT*	#1 TONNAGE	#2 TONNAGE				#3 TONNAGE
15 TON-G18	151	5 TON	5 TON	5 TON	32-13/16	76-3/16	70-7/8
15 TON-920	159	5 TON	5 TON	5 TON	32-13/16	97-3/16	91-15/16

2410A REFRIGERANT

MODEL	CELDEK EVAPORATIVE COOLING UNIT	
	TOT. WEIGHT	MEAN SIZE & QTY
D-500-G18	2410 LBS	38"x43"x12" 35
D-750-G18	2420 LBS	38"x43"x12" 35
D-1000-G18	2420 LBS	38"x43"x12" 35
D-1000-920	3565 LBS	45"x54"x12" 42
D-1500-920	3580 LBS	45"x54"x12" 42

MODEL	FILTERS		OPTIONAL MIXING BOX FILTERS	
	FILTER SIZE & QTY	FILTER SIZE & QTY	FILTER SIZE & QTY	FILTER SIZE & QTY
D-500-G18	16"x20"x2" (15)	15"x20"x2" (4), 15"x15"x2" (2)	16"x20"x2" (15)	15"x20"x2" (4), 15"x15"x2" (2)
D-750-G18	16"x20"x2" (15)	15"x20"x2" (4), 15"x15"x2" (2)	16"x20"x2" (15)	15"x20"x2" (4), 15"x15"x2" (2)
D-1000-G18	16"x20"x2" (15)	15"x20"x2" (4), 15"x15"x2" (2)	16"x20"x2" (15)	15"x20"x2" (4), 15"x15"x2" (2)
D-1000-920	20"x25"x2" (12)	18"x25"x2" (4), 16"x20"x2" (2)	20"x25"x2" (12)	18"x25"x2" (4), 16"x20"x2" (2)
D-1500-920	20"x25"x2" (12)	18"x25"x2" (4), 16"x20"x2" (2)	20"x25"x2" (12)	18"x25"x2" (4), 16"x20"x2" (2)



MAX. ROOF OPENING 2" SMALLER THAN CURB OUTSIDE DIMENSION

MAX. RAIL OPENING 2" SMALLER THAN CURB OUTSIDE DIMENSION

*MAX. EVAP WATER PRESSURE = 50 PSI @ 70 DEG. F

**MAX. EVAP WATER PRESSURE = 50 PSI @ 70 DEG. F

20 INCH HIGH CURB/RAIL CONNECTION WITH LIFTING LUGS USED IN PLACE OF SINGLE CURB ON UNITS WITH 20" BLOWERS

General Construction: Profile plates shall be formed from G90 galvanized steel. Profile plates shall vary in size per unit. Profile plates shall be mounted along the same plane as the discharge of the burner. Design shall incorporate proper torque, permanently mounted spring hinges.

Direct Fired (DP) Profile Plate Assembly