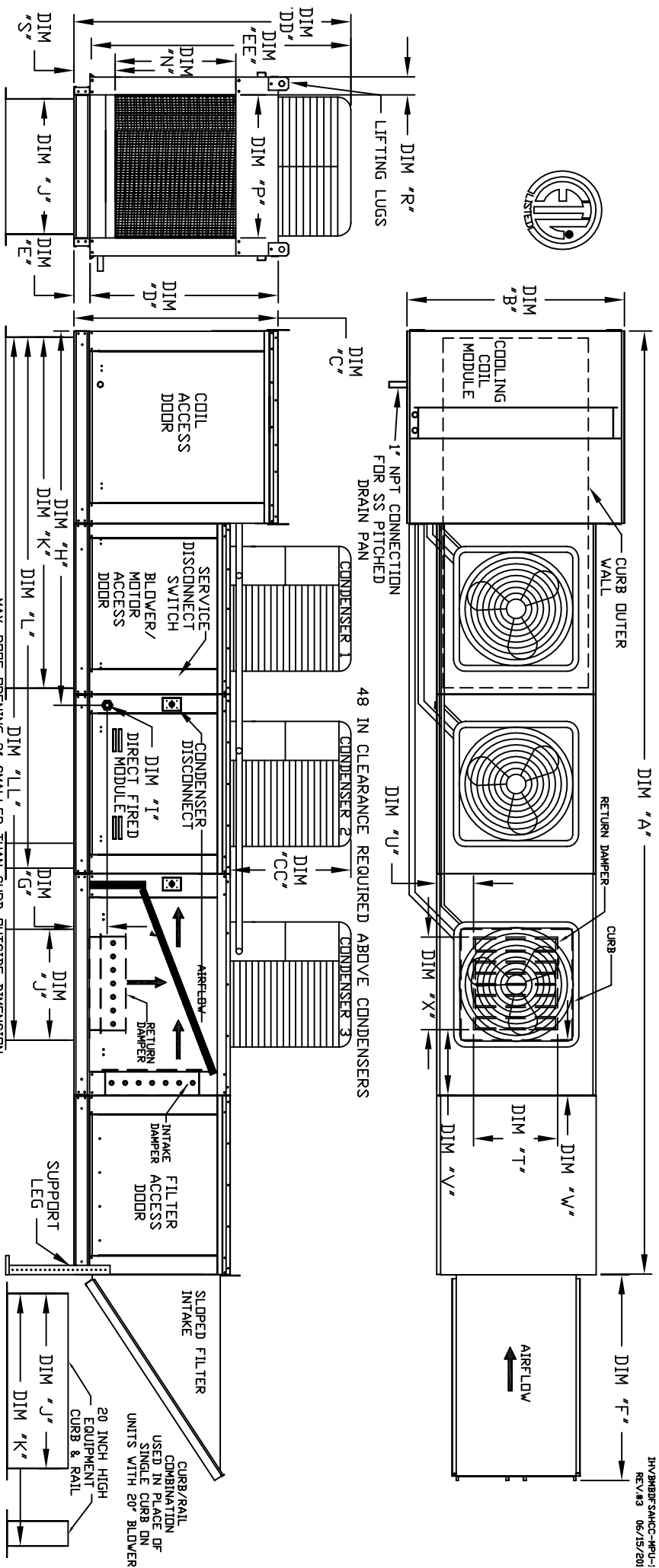


MODULAR OUTDOOR SIDE DISCHARGE DIRECT FIRED RECIRCULATING HEATER WITH COOLING, V-BANK AND INTAKE HOOD

IHV2B8B/S4HC-PPU-1  
REV. #3 06/15/2010



ALL DIMENSIONS ARE NOMINAL AND GIVEN IN INCHES.

MODEL	WEIGHT	UNIT DIMENSIONS										CURB/RAIL		DISCHARGE OPENING		RETURN OPENING					
		A	B	C	D	E	F	G	H	J	K	L	N	P	R	S	T	U	V	X	
D.500-G18	1920 LBS	210-1/8	54-3/8	56-3/8	51-1/8	51-5/8	9-1/2	90-1/16	35	84	126-1/4	165-11/16	29-5/8	30	11-1/2	7-3/8	28	8	7	4-1/2	30
D.750-G18	1925 LBS	210-1/8	54-3/8	56-3/8	51-1/8	51-5/8	9-1/2	90-1/16	35	84	126-1/4	165-11/16	29-5/8	30	11-1/2	7-3/8	28	8	7	4-1/2	30
D.1000-G18	1930 LBS	210-1/8	54-3/8	56-3/8	51-1/8	51-5/8	9-1/2	90-1/16	35	84	126-1/4	165-11/16	29-5/8	30	11-1/2	7-3/8	28	8	7	4-1/2	30
D.1000-920	3125 LBS	262-1/2	60-7/16	64-3/8	59-1/8	5-1/4	76-3/8	13-9/16	120-5/8	42	115-3/16	169-1/2	27-1/2	34	12-1/2	7-3/8	33	10	11	8	36
D.1500-920	3140 LBS	262-1/2	60-7/16	64-3/8	59-1/8	5-1/4	76-3/8	13-9/16	120-5/8	42	115-3/16	169-1/2	27-1/2	34	12-1/2	7-3/8	33	10	11	8	36

MODEL	BTU RANGE (MBH)	GAS PRESSURE		GAS CONNECTION		TONNAGE RANGE		FILTER SIZE & QTY		MAX. FILTER VELOCITY		OPTIONAL MIXING BOX FILTERS	
		MIN	MAX	1" (NPT)	1" (NPT)	MIN	MAX	MIN	MAX	MIN	MAX	MIN	MAX
D.500-G18	BURNER LENGTH	12"	18	550	7" WC	14" WC	15 Ton	15 Ton	20"x25"x2" (8)	@800 CFM = 348 FPM	15"x20"x2" (4)	15"x15"x2" (2)	
D.750-G18		18"	27.5	825	7" WC	14" WC	15 Ton	15 Ton	20"x25"x2" (8)	@800 CFM = 348 FPM	15"x20"x2" (4)	15"x15"x2" (2)	
D.1000-G18		24"	36.6	1100	7" WC	14" WC	15 Ton	15 Ton	20"x25"x2" (8)	@800 CFM = 348 FPM	15"x20"x2" (4)	15"x15"x2" (2)	
D.1000-920		24"	36.6	1100	7" WC	5 PSI	15 Ton	15 Ton	16"x20"x2" (15)	@1300 CFM = 495 FPM	18"x25"x2" (4)	16"x20"x2" (2)	
D.1500-920		30"	45.8	1375	7" WC	5 PSI	15 Ton	15 Ton	16"x20"x2" (15)	@1300 CFM = 495 FPM	18"x25"x2" (4)	16"x20"x2" (2)	

**CONDENSER INFORMATION**

**BTU RANGE (MBH)**

**GAS PRESSURE**

**GAS CONNECTION**

**TONNAGE RANGE**

**FILTER SIZE & QTY**

**MAX. FILTER VELOCITY**

**OPTIONAL MIXING BOX FILTERS**

**Direct Fired Profile Plate Specifications:**

Direct fired burners shall have patented (US Patent No. US6629238B2), self-adjusting profile plates designed to ensure proper air velocity and pressure drop across the burner. Profile plates shall allow burners to achieve clean combustion by limiting by-product levels to a maximum of 50ppm of carbon monoxide (CO), and 50ppm of nitrogen dioxide (NO2).

**Application:**

Spring-loaded burner profile plates are engineered to automatically react to the momentum of a fresh air stream, without the need for any motors or actuators to mechanically adjust them. With this feature, all DF units are designed for demand control ventilation (DCV) requirements.

**Certifications:**

All profile plate assemblies shall be included in the DF unit's ETL listing and comply with combined safety standards ANSI Z89.4 and CSA 3.7 (non-recirculating DF heaters) and ANSI Z83.18 (recirculating DF heaters).

**General Construction:**

- Profile plates shall be formed from 690 galvanized steel.
- Profile plates shall vary in size per unit.
- Profile plates shall be mounted along the same plane as the discharge of the burner.
- Design shall incorporate properly torqued, permanently mounted spring hinges.

**Direct Fired (DF) Profile Plate Assembly**

