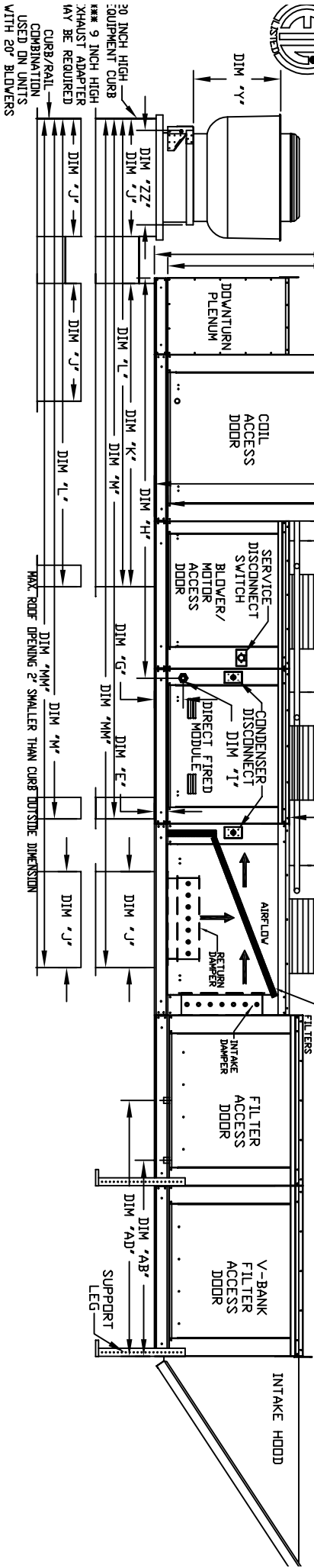
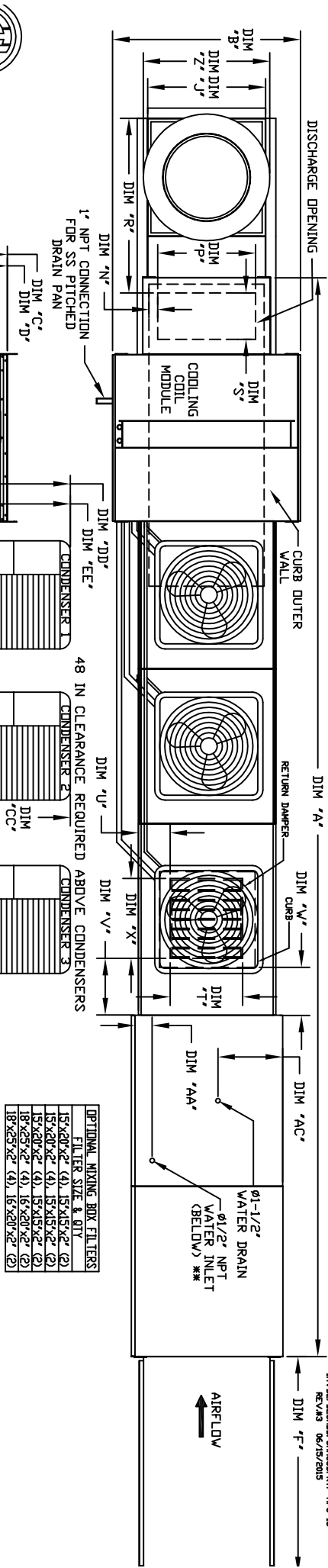


MODULAR OUTDOOR DOWN DISCHARGE DIRECT FIRED RECIRCULATING HEATER-ROOF TOP PACKAGE WITH COOLING, LPD EVAPORATIVE COOLER INTAKE, V-BANK AND INTAKE HOOD

1/16" DISCRETE SPACING 1/16" 40-1/8"
REV. A/B 5/01/2015

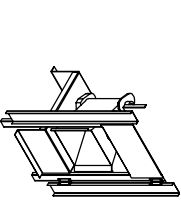


20 INCH HIGH EQUIPMENT CURB
9 INCH HIGH EXHAUST ADAPTER MAY BE REQUIRED PER CURB/RAIL COMBINATION USED ON UNITS WITH 20" BLOWERS

MODEL	A	B	C	D	E	F	G	H	J	K	L	M	N	P	R	S	T	U	V	W	X	AA	AB	AC	AD	
D2500-G18	267	54-3/8	56-3/8	51-1/8	5-1/4	76-3/8	9-1/2	114-7/16	35	84	133	199-5/8	239-1/16	5-5/16	22-3/8	49-1/2	18	28	8	7	4-1/2	30	4-1/2	41-1/8	23-1/2	52-7/8
D1750-G18	267	54-3/8	56-3/8	51-1/8	5-1/4	76-3/8	9-1/2	114-7/16	35	84	133	199-5/8	239-1/16	5-5/16	22-3/8	49-1/2	18	28	8	7	4-1/2	30	4-1/2	41-1/8	23-1/2	52-7/8
D1000-G18	267	54-3/8	56-3/8	51-1/8	5-1/4	76-3/8	9-1/2	114-7/16	35	84	133	199-5/8	239-1/16	5-5/16	22-3/8	49-1/2	18	28	8	7	4-1/2	30	4-1/2	41-1/8	23-1/2	52-7/8
D750-G18	267	54-3/8	56-3/8	51-1/8	5-1/4	76-3/8	9-1/2	114-7/16	35	84	133	199-5/8	239-1/16	5-5/16	22-3/8	49-1/2	18	28	8	7	4-1/2	30	4-1/2	41-1/8	23-1/2	52-7/8
D500-G18	267	54-3/8	56-3/8	51-1/8	5-1/4	76-3/8	9-1/2	114-7/16	35	84	133	199-5/8	239-1/16	5-5/16	22-3/8	49-1/2	18	28	8	7	4-1/2	30	4-1/2	41-1/8	23-1/2	52-7/8
D2500-G20	267	60-7/16	64-3/8	62-3/8	5-1/4	71-3/8	13-9/16	131	42	115-3/16	171-3/16	255-7/8	303-7/8	5-1/4	3-1/2	56-1/8	23-1/2	33	10	11	8	36	4-1/2	41-1/8	28-7/8	52-7/8
D1750-G20	267	60-7/16	64-3/8	62-3/8	5-1/4	71-3/8	13-9/16	131	42	115-3/16	171-3/16	255-7/8	303-7/8	5-1/4	3-1/2	56-1/8	23-1/2	33	10	11	8	36	4-1/2	41-1/8	28-7/8	52-7/8
D1000-G20	267	60-7/16	64-3/8	62-3/8	5-1/4	71-3/8	13-9/16	131	42	115-3/16	171-3/16	255-7/8	303-7/8	5-1/4	3-1/2	56-1/8	23-1/2	33	10	11	8	36	4-1/2	41-1/8	28-7/8	52-7/8
D750-G20	267	60-7/16	64-3/8	62-3/8	5-1/4	71-3/8	13-9/16	131	42	115-3/16	171-3/16	255-7/8	303-7/8	5-1/4	3-1/2	56-1/8	23-1/2	33	10	11	8	36	4-1/2	41-1/8	28-7/8	52-7/8
D500-G20	267	60-7/16	64-3/8	62-3/8	5-1/4	71-3/8	13-9/16	131	42	115-3/16	171-3/16	255-7/8	303-7/8	5-1/4	3-1/2	56-1/8	23-1/2	33	10	11	8	36	4-1/2	41-1/8	28-7/8	52-7/8

CONDENSER INFORMATION							CURB/RAIL							DISCHARGE OPENING							RETURN DAMPER OPENING							WATER INLET DRAIN OPENING							EXHAUST UNIT DIMENSIONS						
MODEL	WEIGHT #	#1	#2	#3	CC	DD	EE	MIN	MAX	MIN	MAX	MIN	MAX	MIN	MAX	MIN	MAX	MIN	MAX	MIN	MAX	MIN	MAX	MIN	MAX																
D2500-G18	18	18	18	18	32-13/16	76-3/16	70-7/8	15	15	15	15	15	15	15	15	15	15	15	15	15	15	15	15	15	15																
D1750-G18	24	24	24	24	32-13/16	76-3/16	70-7/8	15	15	15	15	15	15	15	15	15	15	15	15	15	15	15	15	15	15																
D1000-G18	24	24	24	24	32-13/16	76-3/16	70-7/8	15	15	15	15	15	15	15	15	15	15	15	15	15	15	15	15	15	15																
D750-G18	24	24	24	24	32-13/16	76-3/16	70-7/8	15	15	15	15	15	15	15	15	15	15	15	15	15	15	15	15	15	15																
D500-G18	30	30	30	30	32-13/16	76-3/16	70-7/8	15	15	15	15	15	15	15	15	15	15	15	15	15	15	15	15	15	15																
D2500-G20	18	18	18	18	32-13/16	76-3/16	70-7/8	15	15	15	15	15	15	15	15	15	15	15	15	15	15	15	15	15	15																
D1750-G20	24	24	24	24	32-13/16	76-3/16	70-7/8	15	15	15	15	15	15	15	15	15	15	15	15	15	15	15	15	15	15																
D1000-G20	24	24	24	24	32-13/16	76-3/16	70-7/8	15	15	15	15	15	15	15	15	15	15	15	15	15	15	15	15	15	15																
D750-G20	24	24	24	24	32-13/16	76-3/16	70-7/8	15	15	15	15	15	15	15	15	15	15	15	15	15	15	15	15	15	15																
D500-G20	30	30	30	30	32-13/16	76-3/16	70-7/8	15	15	15	15	15	15	15	15	15	15	15	15	15	15	15	15	15	15																

Direct Fired Profile Plate Specifications:
 Direct fired burners shall have patented QIS Patent No. US6626332B, self-adjusting profile plates designed to ensure proper air velocity and pressure drop across the burner. Profile plates shall allow burners to achieve clean combustion by limiting by-product levels to a maximum of 50ppm of carbon monoxide (CO), and 150ppm of nitrogen dioxide (NO2).
 Application: Burner profile plates are engineered to automatically react to the operation of burner air stream, without the need for any motors or actuators to mechanically adjust them. With this feature, all DF units are designed for demand control ventilation (DCV) requirements.
 Certifications:
 All profile plate assemblies shall be included in the DF unit's ETL listing and comply with combined safety standards ANSI Z89.4 and CSA 37 (non-recirculating DF heaters) and ANSI Z83.18 (recirculating DF heaters).
General Construction:
 Profile plates shall be formed from G90 galvanized steel.
 Profile plates shall be mounted to the burner housing.
 Profile plates shall be mounted along the same plane as the discharge of the burner.
 Design shall incorporate properly torqued, permanently mounted spring hinges.



Direct Fired (DF) Profile Plate Assembly

MODEL #	Y	Z	ZZ ***
DU281A	14-1/2	22	19
DU282A	18-1/2	27-1/4	21
DU283A	21-1/2	30-1/4	21
DU284A	23-1/2	33-3/4	24-3/4
NCA161A	29-1/2	39-7/8	28
NCA181A	30-5/8	43-3/8	33
NCA241A	33-1/2	52-3/4	40