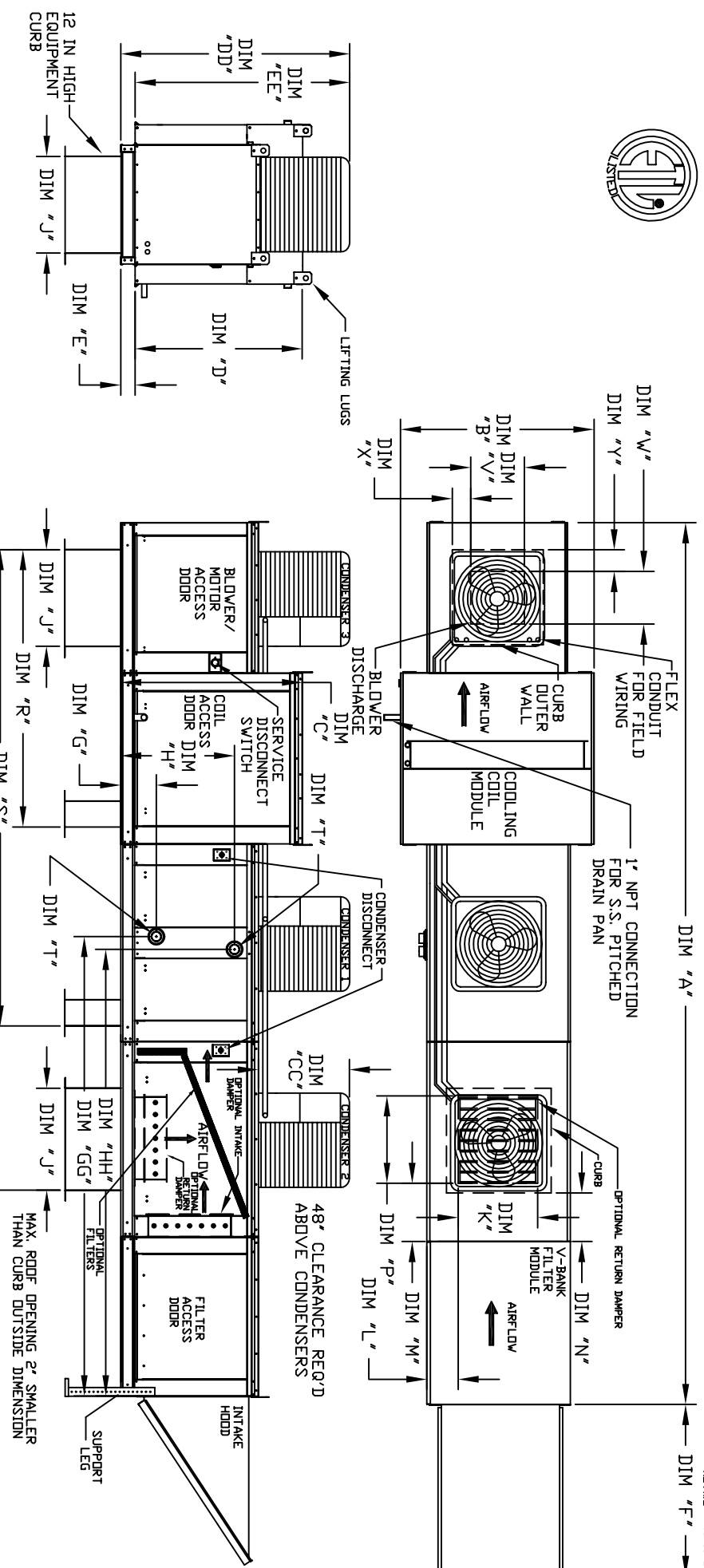


OUTSIDE DOWN DISCHARGE UNIT, HEATING COIL, V-BANK FILTER, INTAKE HOOD AND OPTIONAL MIXING BOX



ALL DIMENSIONS ARE NOMINAL AND GIVEN IN INCHES.

MODEL	UNIT DIMENSIONS				RETURN OPENING								DISCHARGE OPENING				TONNAGE RANGE				
	A	B	C	D	E	F	J	K	L	M	N	P	R	S	U	V	W	X	Y	MIN	MAX
G18	214-1/8	54-3/8	56-3/8	51-1/8	51-1/4	51-5/8	35	28	8	7	4-1/2	30	79-3/16	121-5/16	162-3/8	22	19	6-1/2	7	15 Ton	15 Ton
920	281-7/16	60-7/16	64-3/8	59-1/8	5-1/4	76-3/8	42	33	10	11	8	36	104-9/32	158-15/32	208	24	7/8	24-7/8	7/8	15 Ton	15 Ton

MODEL	TOTAL CAPACITY		PIPE CONNECTION		STEAM	
	(MBH)	(KMPH)	"T" (KMPH)	"PST"	G	GG
G18	1735	514.97	1-1/2	2-1/2	10-1/4	101-9/16
920	2870	831.87	2-1/2	2-1/2	10-1/4	116-25/32

MODEL	TOTAL CAPACITY		PIPE CONNECTION		STEAM	
	(MBH)	(KMPH)	"T" (KMPH)	"PST"	G	GG
G18	1730	505.64	2-1/2	2-1/2	5	10-1/4
920	2845	812.24	2-1/2	2-1/2	5	10-1/4

*ADD CONDENSING UNIT WEIGHT TO WEIGHT IN TABLE ABOVE

V-BANK FILTER

MODEL	FILTER SIZE & QTY MAX. FILTER VELOCITY	OPTIONAL MIXING BOX FILTERS
G18	20"x25"x2" (8) @8000 CFM = 348 FPM	15"x20"x2" (4), 15"x15"x2" (2)
920	16"x20"x2" (15) @15000 CFM = 572 FPM	18"x25"x2" (4), 16"x20"x2" (2)

CONDENSER INFORMATION

MODEL	WEIGHT*	#1	#2	#3	CC	DD	EE
15 TON-G18	591 LBS	5 TON	5 TON	5 TON	32-13/16	76-3/16	70-7/8
15 TON-920	591 LBS	5 TON	5 TON	5 TON	32-13/16	97-3/16	91-15/16