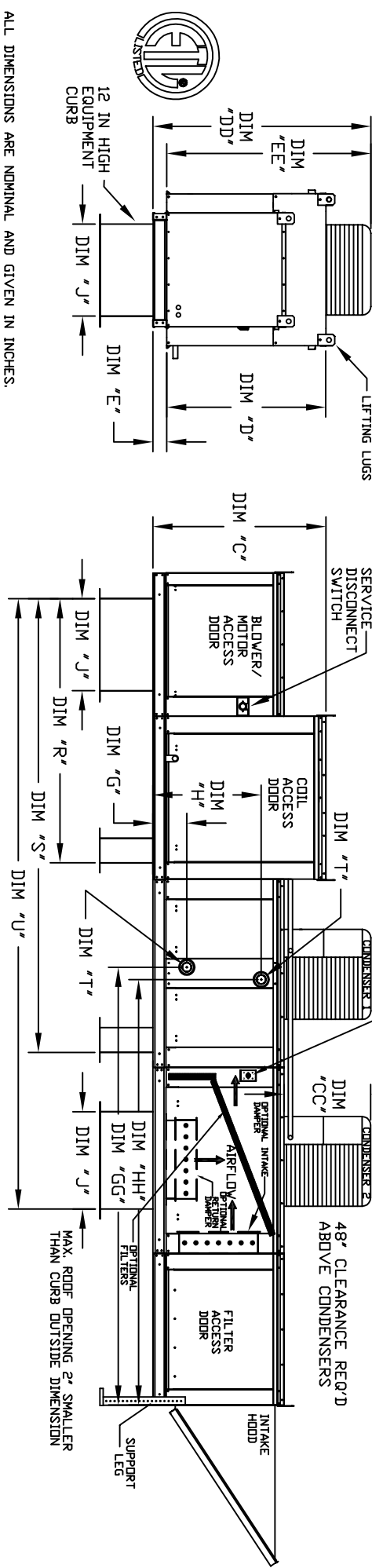
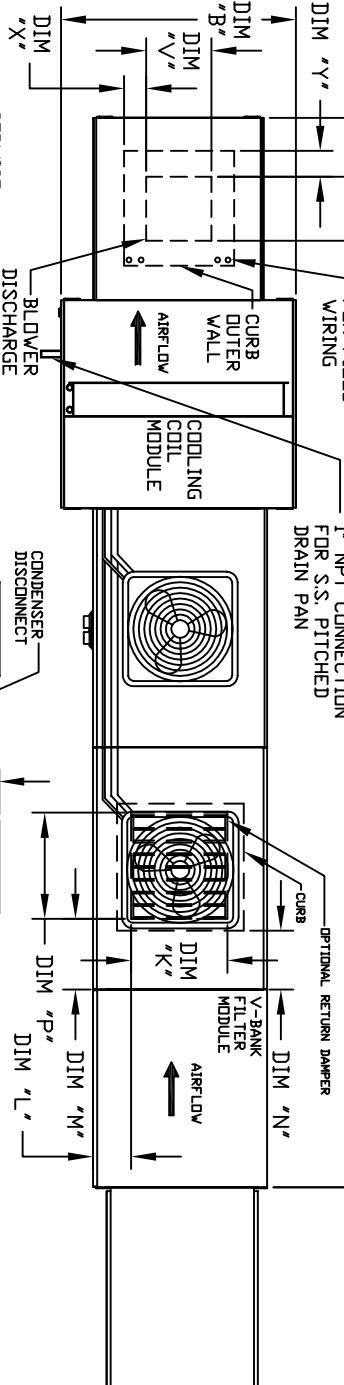


OUTSIDE DOWN DISCHARGE MOD PACKAGE UNIT, HEATING COIL, V-BANK FILTER, INTAKE HOOD AND OPTIONAL MIXING BOX

JHVBHCC04H-4PU
REV. #2 06/15/2015

CONDENSER INFORMATION

MODEL	WEIGHT*	#1 TONNAGE	#2 TONNAGE	CC	DD	EE
2 TON-G10	119 LBS	2 TON	N/A	26-5/16	56-1/16	52-3/8
3 TON-G10	134 LBS	3 TON	N/A	33-5/16	63-1/16	59-3/8
5 TON-G10	253 LBS	2 TON	N/A	33-5/16	63-1/16	59-3/8
5 TON-G10	302 LBS	2.5 TON	N/A	32-13/16	62-9/16	58-7/8
5 TON-G12	197 LBS	5 TON	N/A	32-13/16	69-9/16	65-7/8
7.5 TON-G12	348 LBS	2.5 TON	N/A	32-13/16	69-9/16	65-7/8
10 TON-G12	394 LBS	5 TON	N/A	32-13/16	69-9/16	65-7/8
5 TON-G15	197 LBS	5 TON	N/A	32-13/16	69-9/16	65-7/8
7.5 TON-G15	302 LBS	2.5 TON	N/A	32-13/16	69-9/16	65-7/8
8 TON-G15	331 LBS	3 TON	N/A	32-13/16	71-11/16	68
10 TON-G15	394 LBS	5 TON	N/A	32-13/16	69-9/16	65-7/8
10 TON-G18	394 LBS	5 TON	N/A	32-13/16	76-3/16	70-7/8
10 TON-G20	394 LBS	5 TON	N/A	32-13/16	97-3/16	91-15/16

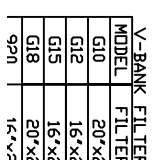


ALL DIMENSIONS ARE NOMINAL AND GIVEN IN INCHES.

MODEL	UNIT DIMENSIONS											RETURN OPENING											DISCHARGE OPENING											TONNAGE RANGE	
	A	B	C	D	E	F	G	H	I	J	K	L	M	N	O	P	Q	R	S	T	U	V	W	X	Y	Z	MIN	MAX							
G10	191-1/8	39-3/8	42-3/4	39	3-3/4	44-3/8	8-1/4	24-3/4	18	65-13/16	107-15/16	140-7/8	13-1/4	11-1/2	3-7/8	1-3/4	2	16-15/16	16-15/16	16-15/16	2-1/2	2-1/2	5	8-3/4	95-9/16	16-15/16	18-3/8	95-9/16							
G12	199-1/8	49-3/8	47-3/4	44	3-3/4	53-5/8	8-1/4	28-3/4	8	74-5/8	116-3/4	154-7/8	15-3/4	13-9/16	7-5/8	7-15/16	5	10	10	10	2	2	5	8-3/4	95-9/16	18-3/8	18-3/8	95-9/16							
G15	199-1/8	49-3/8	47-3/4	44	3-3/4	53-5/8	8-1/4	28-3/4	8	74-5/8	116-3/4	154-7/8	15-3/4	13-9/16	7-5/8	7-15/16	5	10	10	10	2	2	5	8-3/4	95-9/16	18-3/8	18-3/8	95-9/16							
G18	214-1/8	54-3/8	56-3/8	51-1/8	5-1/4	51-5/8	9-1/2	102-11/16	38	100-7/16	100-7/16	100-7/16	10-1/2	10-1/2	10-1/2	10-1/2	10-1/2	10-1/2	10-1/2	10-1/2	2-1/2	2-1/2	5	10-1/4	101-9/16	23-5/8	101-9/16								
920	281-7/16	60-7/16	64-3/8	59-1/8	5-1/4	76-3/8	10	118-1/4	45-1/2	114-5/8	114-5/8	114-5/8	11-1/2	11-1/2	11-1/2	11-1/2	11-1/2	11-1/2	11-1/2	11-1/2	2-1/2	2-1/2	5	10-1/4	116-25/32	28-5/8	116-25/32								

MODEL	TOTAL CAPACITY			PIPE CONNECTION			STEAM					
	WEIGHT*	(AMBH)	'T' (MPRT)	G	GG	H	HH	PSI	G	GG	H	HH
G10	1015 LBS	165.63	2	8-1/4	96-15/16	24-3/4	94-3/16	5	8-3/4	95-9/16	16-15/16	95-9/16
G12	1415 LBS	320.88	2	8-1/4	96-15/16	28-3/4	94-3/16	5	8-3/4	95-9/16	18-3/8	95-9/16
G15	1425 LBS	320.88	2	8-1/4	96-15/16	28-3/4	94-3/16	5	8-3/4	95-9/16	18-3/8	95-9/16
G18	1735 LBS	514.97	1-1/2	9-1/2	102-11/16	38	100-7/16	5	10-1/4	101-9/16	23-5/8	101-9/16
920	2870 LBS	831.87	2-1/2	10	118-1/4	45-1/2	114-5/8	5	10-1/4	116-25/32	28-5/8	116-25/32

V-BANK FILTER
 FILTER SIZE & QTY
 MAX. FILTER VELOCITY
 OPTIONAL MIXING BOX FILTERS



12 IN HIGH EQUIPMENT CURB
 LIFTING LUGS
 SERVICE DISCONNECT SWITCH
 BLOWER/MOTOR ACCESS DOOR
 COIL ACCESS DOOR
 CONDENSER DISCONNECT
 CONDENSER DISCONNECT
 CURB
 V-BANK FILTER MODULE
 INTAKE HOOD
 SUPPORT LEG

MAX. ROOF OPENING 2" SMALLER THAN CURB OUTSIDE DIMENSION

*ADD CONDENSING UNIT WEIGHT TO WEIGHT IN TABLE ABOVE