

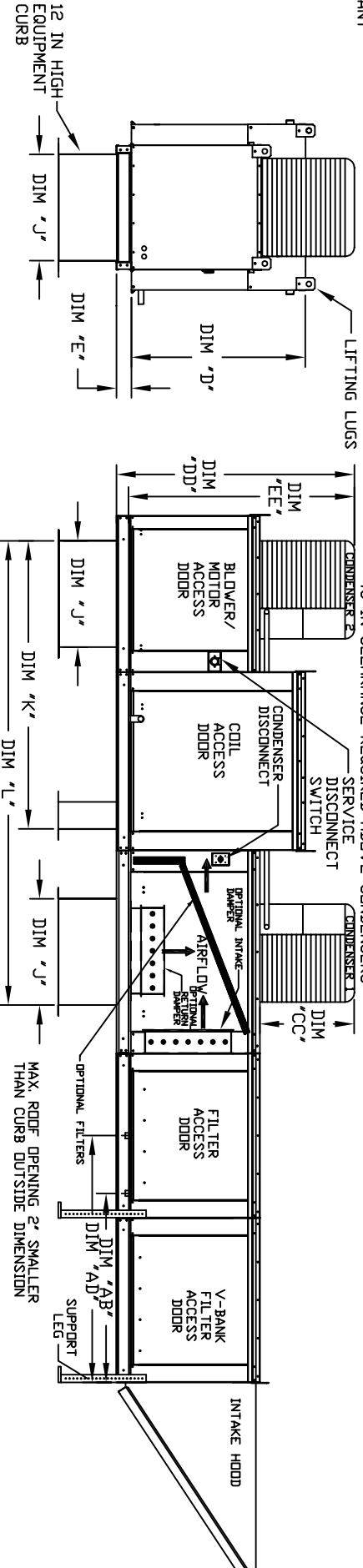
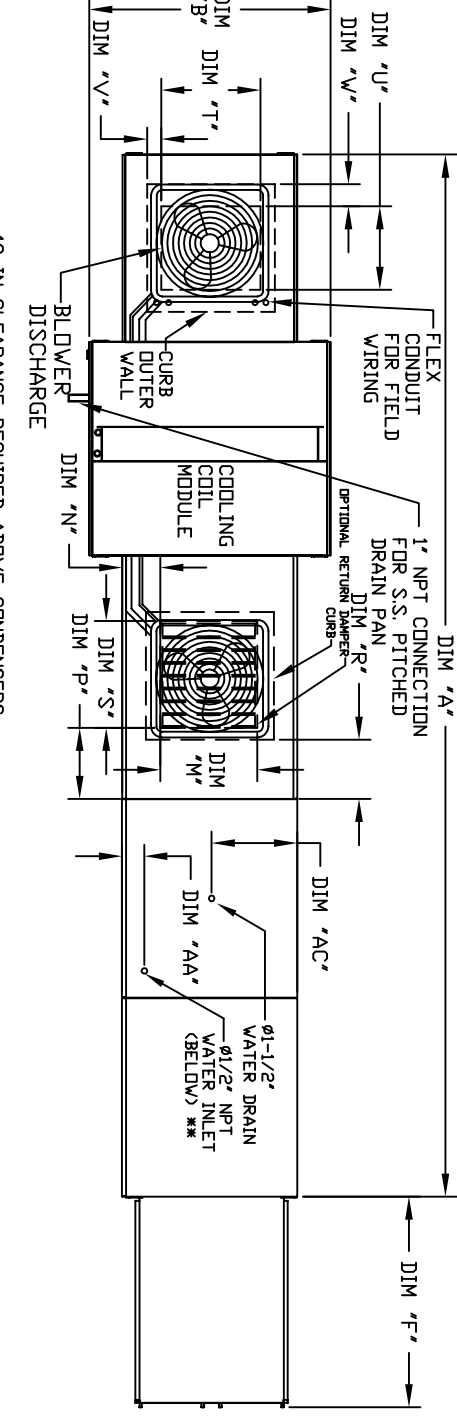
OUTDOOR DOWN DISCHARGE MOD PACKAGE UNIT, V-BANK, EVAPORATIVE COOLER INTAKE, INTAKE HOOD AND OPTIONAL MIXING BOX

INVERTER/CDM-4P/4U
REV#02 06/15/2015



CONDENSER INFORMATION

MODEL	WEIGHT*	#1	#2	CC	DD	EE
2 TON-G10	119 LBS	2 TON	N/A	26-5/16	56-1/16	52-3/8
3 TON-G10	134 LBS	2 TON	N/A	33-5/16	63-1/16	59-3/8
3 TON-G10	253 LBS	2 TON	N/A	33-5/16	63-1/16	59-3/8
3 TON-G10	302 LBS	2.5 TON	2.5 TON	32-13/16	62-9/16	58-7/8
5 TON-G12	197 LBS	5 TON	N/A	32-13/16	69-9/16	65-7/8
5 TON-G12	394 LBS	5 TON	5 TON	32-13/16	69-9/16	65-7/8
5 TON-G12	394 LBS	5 TON	5 TON	32-13/16	69-9/16	65-7/8
5 TON-G12	394 LBS	5 TON	5 TON	32-13/16	69-9/16	65-7/8
5 TON-G12	394 LBS	5 TON	5 TON	32-13/16	69-9/16	65-7/8
7.5 TON-G15	197 LBS	5 TON	N/A	32-13/16	69-9/16	65-7/8
7.5 TON-G15	302 LBS	5 TON	5 TON	32-13/16	69-9/16	65-7/8
8 TON-G15	331 LBS	5 TON	5 TON	33-5/16	71-11/16	68
8 TON-G15	394 LBS	5 TON	5 TON	32-13/16	69-9/16	65-7/8
10 TON-G18	394 LBS	5 TON	5 TON	32-13/16	76-3/16	70-7/8
10 TON-G18	394 LBS	5 TON	5 TON	32-13/16	76-3/16	70-7/8
10 TON-G18	394 LBS	5 TON	5 TON	32-13/16	76-3/16	70-7/8
10 TON-G18	394 LBS	5 TON	5 TON	32-13/16	76-3/16	70-7/8



ALL DIMENSIONS ARE NOMINAL AND GIVEN IN INCHES.

MODEL	A	B	C	D	E	F	J	K	L	M	N	O	P	Q	R	S	T	U	V	W	MIN	MAX	WATER INLET	DRAIN OPENING
G10	181-1/8	39-3/8	42-3/4	39	3-3/4	44-3/8	21	65-13/16	98-5/8	14	8	14	14	12-1/2	18	13-1/4	11-1/2	3-7/8	1-3/4	2	5 Ton	5 Ton	4-1/2	38-1/2
G12	189-1/8	49-3/8	47-3/4	44	3-3/4	53-5/8	31	74-5/8	112-5/8	8	11	11	11	7-1/2	24	15-3/4	13-9/16	7-5/8	1-5/16	5	5 Ton	5 Ton	4-1/2	38-1/2
G15	189-1/8	49-3/8	47-3/4	44	3-3/4	53-5/8	31	74-5/8	112-5/8	8	11	11	11	7-1/2	24	15-3/4	13-9/16	7-5/8	1-5/16	5	5 Ton	5 Ton	4-1/2	38-1/2
G18	206-1/8	54-3/8	56-3/8	51-1/8	5-1/4	51-5/8	35	79-3/16	120-1/8	28	8	7	7	4-1/2	30	22	19	6-1/2	7	10	10 Ton	10 Ton	4-1/2	57-1/4
920	243-9/16	60-7/16	64-3/8	59-1/8	5-1/4	76-3/8	42	104-9/32	153-15/16	33	10	11	11	8	36	24-7/8	24-7/8	8-9/16	1-1/8	10	10 Ton	10 Ton	4-1/2	52-7/8

MODEL	FILTER SIZE & QTY	MAX. FILTER VELOCITY	TOT. WEIGHT MEDIA SIZE & QTY VEL. @ MAX. CFM/DZ/LES	MAX. FLOW RATE	TOT. WEIGHT MEDIA SIZE & QTY VEL. @ MAX. CFM/DZ/LES	MAX. FLOW RATE
G10	20"x25"x2" (3)	2350 CFM = 406 FPM	985 LBS	6	990 LBS	12
G12	16"x20"x2" (8)	2500 CFM = 358 FPM	1375 LBS	10	1370 LBS	20
G15	16"x20"x2" (8)	2500 CFM = 358 FPM	1385 LBS	10	1380 LBS	20
G18	20"x25"x2" (8)	2800 CFM = 348 FPM	1715 LBS	14	1705 LBS	28
920	16"x20"x2" (15)	21500 CFM = 572 FPM	2765 LBS	24	2735 LBS	35

OPTIONAL MIXING BOX FILTERS

10"x16"x2" (5)
20"x25"x2" (2), 16"x25"x2" (1)
20"x25"x2" (2), 16"x25"x2" (1)
15"x20"x2" (4), 15"x15"x2" (2)
18"x25"x2" (4), 16"x20"x2" (2)