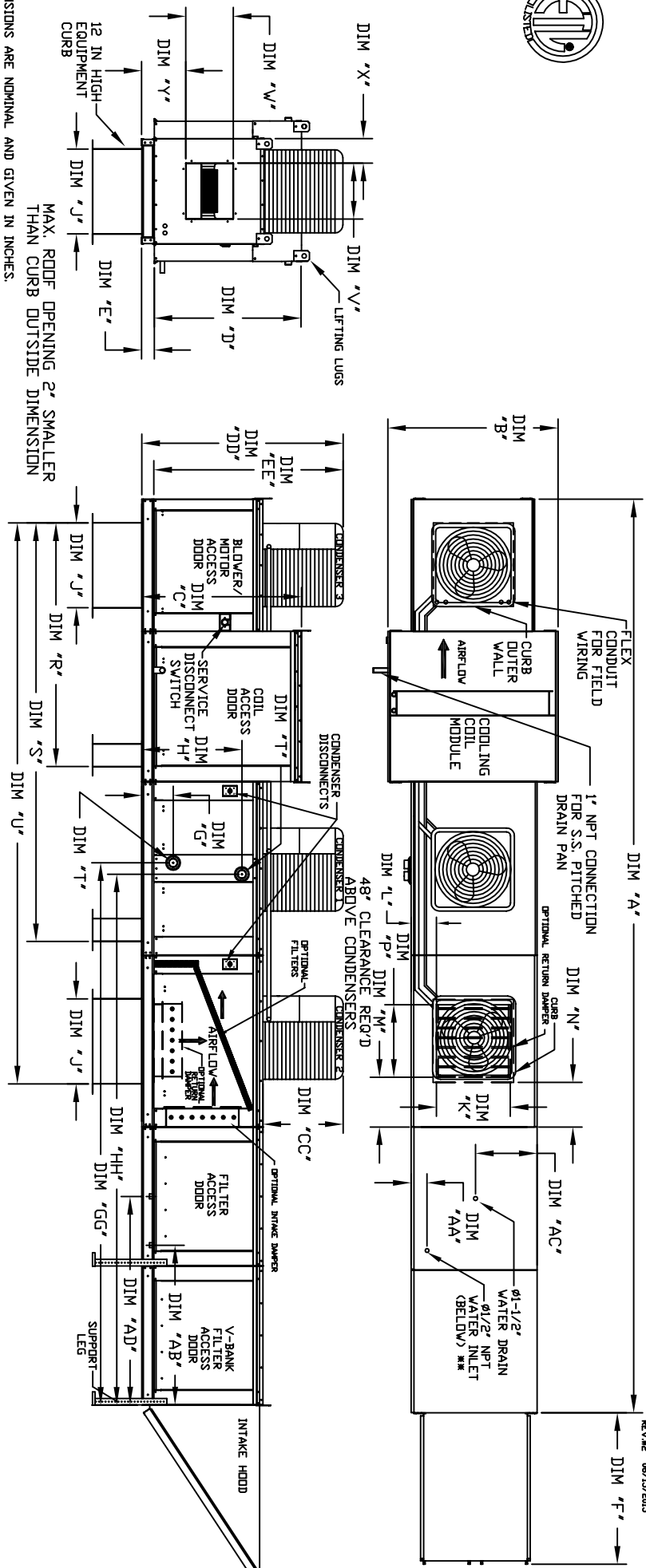




OUTSIDE SIDE DISCHARGE MOD PACKAGE UNIT, HEATING COIL, V-BANK FILTER, EVAPORATIVE COOLER INTAKE, INTAKE HOOD AND OPTIONAL MIXING BOX

DATE: 08/20/2015
REV: 08/20/2015



ALL DIMENSIONS ARE NOMINAL AND GIVEN IN INCHES.

MAX. ROOF OPENING 2" SMALLER THAN CURB OUTSIDE DIMENSION

MODEL	UNIT DIMENSIONS											DISCHARGE OPENING											TONNAGE RANGE				WATER INLET DRAIN OPENING			
	A	B	C	D	E	F	J	K	L	M	N	P	R	S	U	V	W	X	Y	MIN	MAX	AA	AB	AC	AD	AA	AB	AC	AD	
G18	64-3/8	54-3/8	56-3/8	51-1/8	5-1/4	51-5/8	35	28	8	7	4-1/2	30	79-3/16	121-5/16	162-3/8	22	19	9	17-7/8	15	15	15	15	4-1/2	44	20	57-1/4			
920	80-7/16	64-3/8	64-3/8	59-1/8	5-1/4	76-3/8	42	33	10	11	8	36	104-9/32	158-15/32	208	24-7/8	24-7/8	11-1/16	19-1/8	15	15	15	15	4-1/2	41-1/8	23-1/2	152-7/8			

MODEL	TOTAL CAPACITY		PIPE CONNECTION		STEAM COIL MODULE		STEAM		DISCHARGE OPENING		TONNAGE RANGE		WATER INLET DRAIN OPENING				
	(KMBH)	(KMP1)	(KMP1)	(KMP2)	(KMP1)	(KMP2)	(KMP1)	(KMP2)	(KMP1)	(KMP2)	(KMP1)	(KMP2)	(KMP1)	(KMP2)			
G18	514.97	1-1/2	9-1/2	140-15/16	38	138-11/16	5	10-1/4	139-13/16	23-5/8	139-13/16	15	15	4-1/2	44	20	57-1/4
920	831.87	2-1/2	10	153-5/8	45-1/2	150	5	10-1/4	152-3/16	28-5/8	152-3/16	15	15	4-1/2	41-1/8	23-1/2	152-7/8

MODEL	TOTAL CAPACITY		PIPE CONNECTION		STEAM		DISCHARGE OPENING		TONNAGE RANGE		WATER INLET DRAIN OPENING						
	(KMBH)	(KMP1)	(KMP1)	(KMP2)	(KMP1)	(KMP2)	(KMP1)	(KMP2)	(KMP1)	(KMP2)	(KMP1)	(KMP2)					
G18	514.97	1-1/2	9-1/2	140-15/16	38	138-11/16	5	10-1/4	139-13/16	23-5/8	139-13/16	15	15	4-1/2	44	20	57-1/4
920	831.87	2-1/2	10	153-5/8	45-1/2	150	5	10-1/4	152-3/16	28-5/8	152-3/16	15	15	4-1/2	41-1/8	23-1/2	152-7/8

MODEL	TOTAL CAPACITY		PIPE CONNECTION		STEAM		DISCHARGE OPENING		TONNAGE RANGE		WATER INLET DRAIN OPENING						
	(KMBH)	(KMP1)	(KMP1)	(KMP2)	(KMP1)	(KMP2)	(KMP1)	(KMP2)	(KMP1)	(KMP2)	(KMP1)	(KMP2)					
G18	514.97	1-1/2	9-1/2	140-15/16	38	138-11/16	5	10-1/4	139-13/16	23-5/8	139-13/16	15	15	4-1/2	44	20	57-1/4
920	831.87	2-1/2	10	153-5/8	45-1/2	150	5	10-1/4	152-3/16	28-5/8	152-3/16	15	15	4-1/2	41-1/8	23-1/2	152-7/8