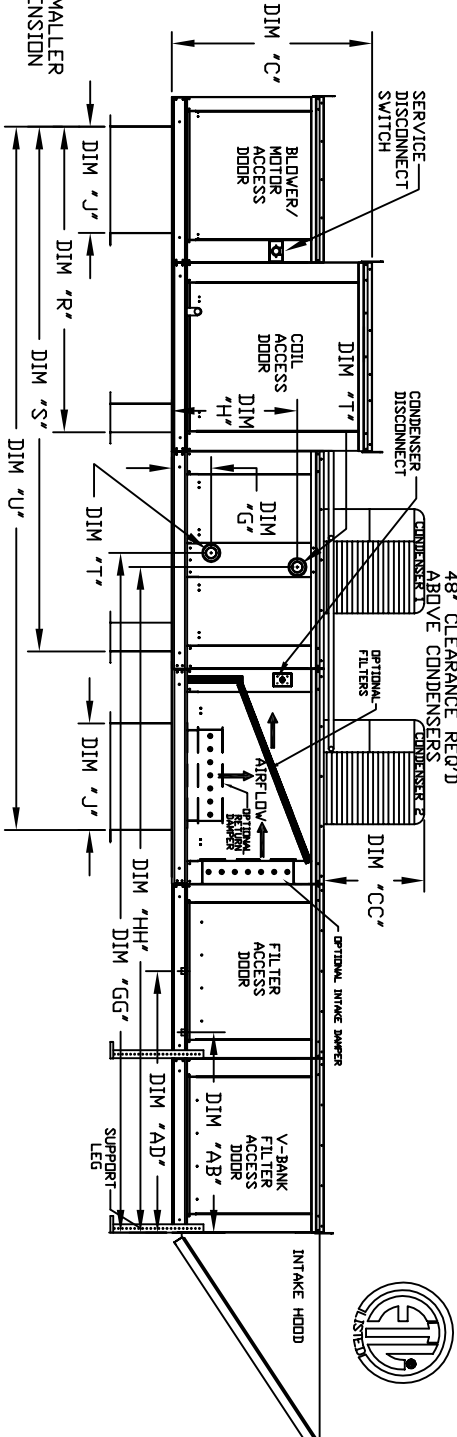
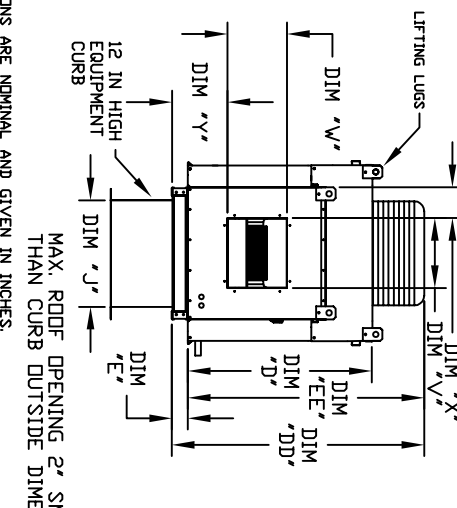
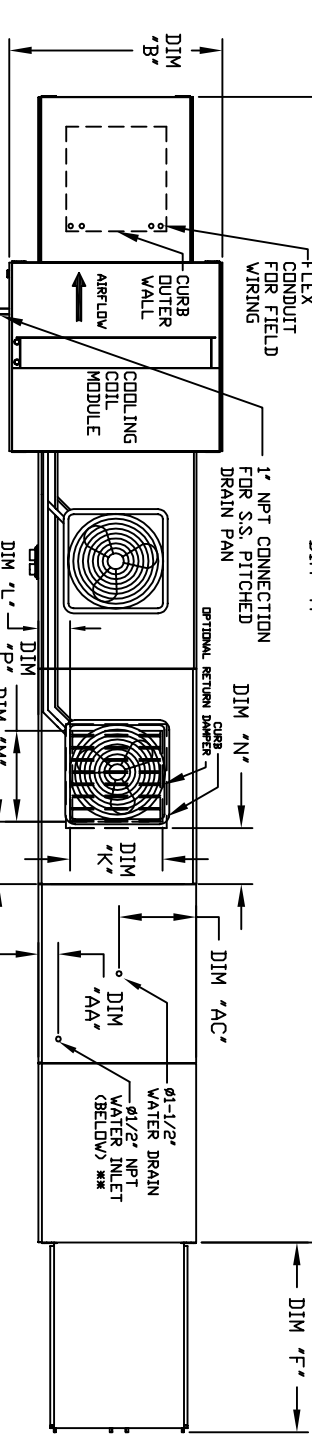


OUTSIDE SIDE DISCHARGE MOD PACKAGE UNIT, HEATING COIL, V-BANK FILTER, EVAPORATIVE COOLER INTAKE, INTAKE HOOD AND OPTIONAL MIXING BOX

HW/CH/BC/CS/AM-HPU
REV/1/2 06/15/2015

CONDENSER INFORMATION

MODEL	WEIGHT*	#1	#2	CC	DD	EE
2 TON-G10	119 LBS	2 TON	N/A	26-5/16	56-1/16	52-3/8
3 TON-G10	134 LBS	3 TON	N/A	33-5/16	63-1/16	59-3/8
5 TON-G10	253 LBS	2 TON	N/A	33-5/16	63-1/16	59-3/8
5 TON-G10	902 LBS	2.5 TON	2.5 TON	32-13/16	62-9/16	58-7/8
5 TON-G12	197 LBS	5 TON	N/A	32-13/16	69-9/16	65-7/8
7.5 TON-G12	348 LBS	2.5 TON	5 TON	32-13/16	69-9/16	65-7/8
10 TON-G12	394 LBS	5 TON	N/A	32-13/16	69-9/16	65-7/8
5 TON-G15	197 LBS	5 TON	N/A	32-13/16	69-9/16	65-7/8
7.5 TON-G15	302 LBS	2.5 TON	5 TON	32-13/16	69-9/16	65-7/8
10 TON-G15	331 LBS	3 TON	5 TON	33-5/16	71-11/16	68
8 TON-G15	1394 LBS	5 TON	5 TON	32-13/16	69-9/16	65-7/8
10 TON-G18	1894 LBS	5 TON	5 TON	32-13/16	76-3/16	70-7/8
10 TON-G20	1934 LBS	5 TON	5 TON	32-13/16	76-3/16	70-7/8
10 TON-G20	1934 LBS	5 TON	5 TON	32-13/16	76-3/16	70-7/8



LL DIMENSIONS ARE NOMINAL AND GIVEN IN INCHES.

MODEL	UNIT DIMENSIONS											DISCHARGE OPENING											TONNAGE RANGE				WATER INLET DRAIN OPENING			
	A	B	C	D	E	F	G	H	I	J	K	L	M	N	P	R	S	U	V	W	X	Y	MIN	MAX	AA	AB	AC	AD		
G10	223-3/8	39-3/8	42-3/4	39	3-3/4	44-3/8	21	14	8	14	12-1/2	18	65-13/16	107-15/16	140-7/8	13-1/4	11-1/2	6-3/8	11-7/8	2	5	5	5	5	4-1/2	38-1/2	13	48-1/4		
G12	231-3/8	49-3/8	47-3/4	44	3-3/4	53-5/8	31	22-3/4	8	11	7-1/2	24	74-5/8	116-3/4	154-7/8	15-3/4	13-9/16	10-1/8	13-1/16	5	10	10	10	10	4-1/2	38-1/2	18	48-1/4		
G15	231-3/8	49-3/8	47-3/4	44	3-3/4	53-5/8	31	22-3/4	8	11	7-1/2	24	74-5/8	116-3/4	154-7/8	15-3/4	13-9/16	10-1/8	13-1/16	5	10	10	10	10	4-1/2	38-1/2	18	48-1/4		
G18	248-3/8	54-3/8	56-3/8	51-1/8	5-1/4	51-5/8	35	28	8	7	4-1/2	30	79-3/16	121-5/16	162-3/8	22	22	9	19	9	10	10	10	10	4-1/2	44	20	57-1/4		
G20	297-7/8	60-7/16	64-3/8	59-1/8	5-1/4	76-3/8	42	33	10	11	8	36	104-9/32	158-15/32	208	24-7/8	24-7/8	11-1/16	19-1/8	10	10	10	10	10	4-1/2	41-1/8	23-1/2	52-7/8		

STANDARD EVAPORATIVE COOLING UNIT V/

MODEL	TOT. WEIGHT	HEAVY DUTY	MAX. CFM	MIN. FLOW RATE	MAX. FLOW RATE
G10	1145 LBS	20"x25"x2" (3)	406 FPM	6	3 GPH
G12	1595 LBS	20"x25"x2" (3)	358 FPM	10	5 GPH
G15	1605 LBS	20"x25"x2" (3)	429 FPM	10	5 GPH
G18	1975 LBS	20"x25"x2" (3)	348 FPM	14	7 GPH
G20	3200 LBS	31.75"x31.75"x2" (3)	572 FPM	24	12 GPH

CELDEK EVAPORATIVE COOLING UNIT V/

MODEL	TOT. WEIGHT	HEAVY DUTY	MAX. CFM	MIN. FLOW RATE	MAX. FLOW RATE
G10	1150 LBS	20"x24"x12"	1050 FPM	12	3.9 GPH
G12	1590 LBS	25"x24"x12"	900 FPM	20	6.5 GPH
G15	1600 LBS	25"x24"x12"	1080 FPM	20	6.5 GPH
G18	1965 LBS	30"x24"x12"	1067 FPM	28	8.4 GPH
G20	3170 LBS	38"x24"x12"	1322 FPM	35	10.5 GPH

OPTIONAL MIXING BOX FILTERS

MODEL	FILTER SIZE & QTY	MAX. FILTER VELOCITY
G10	20"x25"x2" (3)	@3500 CFM = 406 FPM
G12	16"x20"x2" (8)	@5000 CFM = 358 FPM
G15	16"x20"x2" (8)	@5000 CFM = 429 FPM
G18	20"x25"x2" (8)	@6000 CFM = 348 FPM
G20	16"x20"x2" (15)	@15000 CFM = 572 FPM