



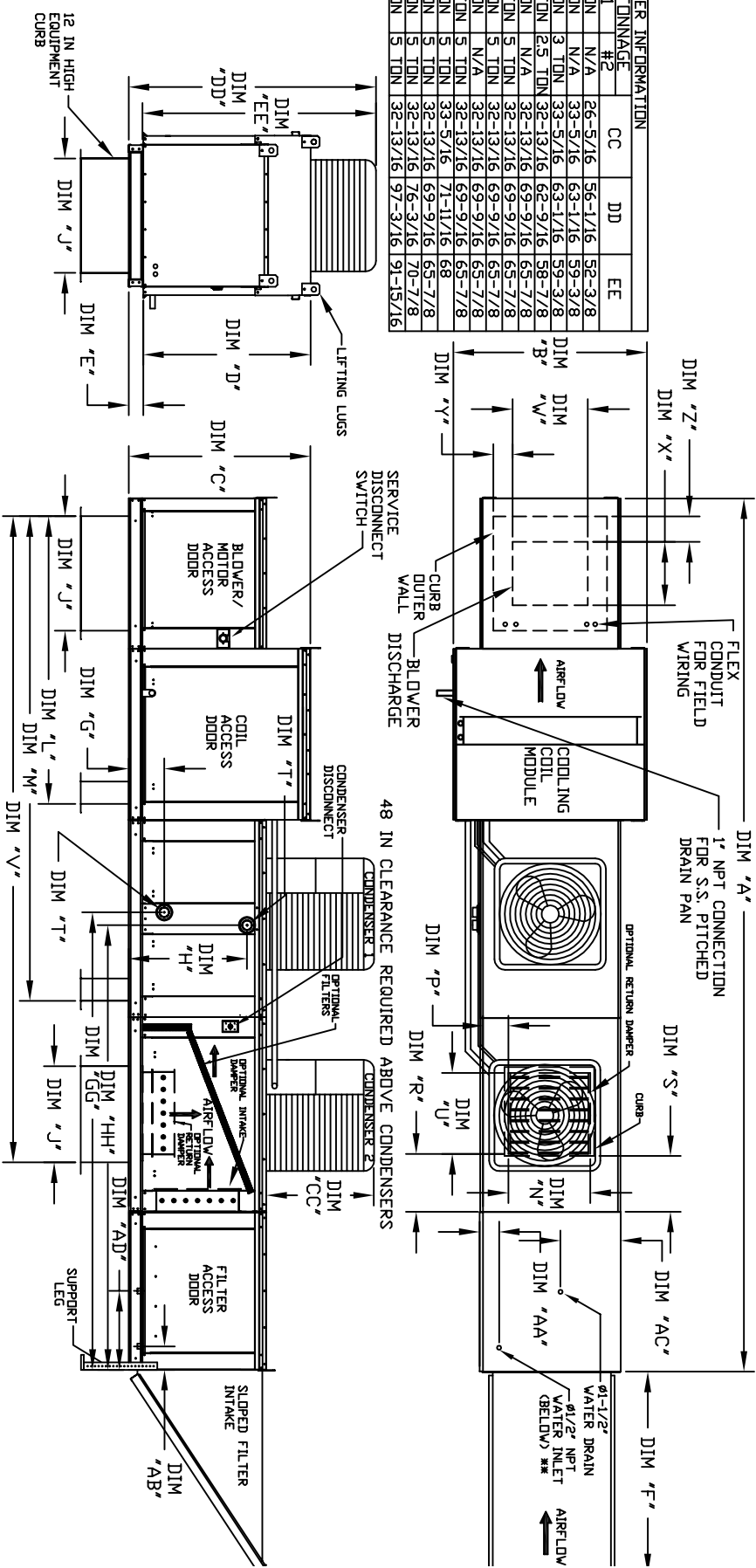
OUTDOOR DOWN DISCHARGE MOD PACKAGE UNIT, HEATING COIL, EVAPORATIVE COOLER INTAKE, INTAKE HOOD AND OPTIONAL MIXING BOX

RECORDS/CD/WH-REV
REV. 06/15/2015

CONDENSER INFORMATION

MODEL	WEIGHT*	#1	#2	CC	DD	EE
2 TON-G10	119 LBS	2 TON	N/A	26-5/16	56-1/16	52-3/8
3 TON-G10	134 LBS	3 TON	N/A	33-5/16	63-1/16	59-3/8
5 TON-G10	253 LBS	5 TON	3 TON	33-5/16	63-1/16	59-3/8
5 TON-G10	302 LBS	5 TON	2.5 TON	32-13/16	62-9/16	58-7/8
5 TON-G10	197 LBS	5 TON	N/A	32-13/16	62-9/16	58-7/8
7.5 TON-G12	348 LBS	2.5 TON	5 TON	32-13/16	69-9/16	65-7/8
10 TON-G12	394 LBS	5 TON	5 TON	32-13/16	69-9/16	65-7/8
5 TON-G15	197 LBS	5 TON	N/A	32-13/16	69-9/16	65-7/8
7.5 TON-G15	302 LBS	5 TON	5 TON	32-13/16	69-9/16	65-7/8
8 TON-G15	331 LBS	5 TON	5 TON	33-5/16	71-11/16	68
10 TON-G15	394 LBS	5 TON	5 TON	32-13/16	69-9/16	65-7/8
10 TON-G18	394 LBS	5 TON	5 TON	32-13/16	76-3/16	70-7/8
10 TON-G20	394 LBS	5 TON	5 TON	32-13/16	97-3/16	91-15/16

R410A REFRIGERANT



ALL DIMENSIONS ARE NOMINAL AND GIVEN IN INCHES.

MAX. ROOF OPENING 2" SMALLER THAN CURB OUTSIDE DIMENSION

UNIT DIMENSIONS											
MODEL	A	B	C	D	E	F	G	H	I	J	K
G10	191-1/8	33-3/8	42-3/4	39	3-3/4	44-3/8	21	65-13/16	107-15/16	14	8
G12	199-1/8	49-3/8	47-3/4	44	3-3/4	53-5/8	31	74-5/8	116-3/4	22-3/4	8
G15	199-1/8	49-3/8	47-3/4	44	3-3/4	53-5/8	31	74-5/8	116-3/4	22-3/4	8
G18	210-1/8	64-3/8	56-3/8	51-1/8	5-1/8	64-3/8	35	79-3/16	121-5/16	28	11
G20	262-1/2	80-7/16	64-3/8	59-1/8	5-1/4	76-3/8	42	104-9/32	158-15/32	33	10
DISCHARGE OPENING											
MODEL	V	X	Y	Z	AA	AB	AC	AD	AE	AF	AG
G10	12-1/2	18	140-7/8	13-1/4	11-1/2	3-7/8	4-1/2	13	16	16	16
G12	7-1/2	24	154-7/8	15-3/4	13-9/16	4-1/2	5-1/4	18	16	16	16
G15	7-1/2	24	154-7/8	15-3/4	13-9/16	4-1/2	5-1/4	18	16	16	16
G18	4-1/2	30	162-3/8	22	19	5-1/2	7	20	19	19	19
G20	8	36	208	24-7/8	24-7/8	8-9/16	1-1/8	4-1/2	5-3/4	23-1/2	17-1/2
WATER INLET DRAIN OPENING											
MODEL	H	HH	AA	AB	AC	AD	AE	AF	AG	AH	AI
G10	95-9/16	95-9/16	16-15/16	6-1/4	13	16	16	16	16	16	16
G12	95-9/16	95-9/16	18-3/8	6-1/4	18	16	16	16	16	16	16
G15	95-9/16	95-9/16	18-3/8	6-1/4	18	16	16	16	16	16	16
G18	101-9/16	101-9/16	23-5/8	6-1/4	18	16	16	16	16	16	16
G20	116-13/16	116-13/16	28-5/8	6-1/4	19	16	16	16	16	16	16
STEAM COIL MODULE											
MODEL	GG	GG	GG	GG	GG	GG	GG	GG	GG	GG	GG
G10	8-1/4	96-15/16	24-3/4	94-3/16	10	10	10	10	10	10	10
G12	8-1/4	96-15/16	28-3/4	94-3/16	10	10	10	10	10	10	10
G15	8-1/4	96-15/16	28-3/4	94-3/16	10	10	10	10	10	10	10
G18	9-1/2	102-11/16	38	100-7/16	10	10	10	10	10	10	10
G20	10	118-1/4	45-1/2	114-5/8	10	10	10	10	10	10	10
TOTAL CAPACITY PIPE CONNECTION											
MODEL	PSI	G	GG	H	HH	MIN	MAX	MIN	MAX	MIN	MAX
G10	176/49	3	8-3/4	95-9/16	16-15/16	2	10	2	10	2	10
G12	328/19	3	8-3/4	95-9/16	18-3/8	2	10	2	10	2	10
G15	328/19	3	8-3/4	95-9/16	18-3/8	2	10	2	10	2	10
G18	505/64	5	10-1/4	101-9/16	23-5/8	5	10	5	10	5	10
G20	812/24	5	10-1/4	116-13/16	28-5/8	5	10	5	10	5	10
STANDARD EVAPORATIVE COOLING UNIT V/											
MODEL	TOT. WEIGHT	STEAM	WATER	COIL	MODULE	MAX. FLOW RATE					
G10	1050 LBS	20"x24"x12"	3	406 FPM	6	3 GPH					
G12	1460 LBS	25"x32"x12"	3	358 FPM	10	5 GPH					
G15	1470 LBS	25"x32"x12"	3	429 FPM	10	5 GPH					
G18	1810 LBS	30"x36"x12"	3	348 FPM	14	7 GPH					
G20	2965 LBS	38"x43"x12"	3	572 FPM	24	12 GPH					
OPTIONAL MIXING BOX FILTERS											
MODEL	TOT. WEIGHT	STEAM	WATER	COIL	MODULE	MAX. FLOW RATE					
G10	1055 LBS	20"x24"x12"	3	390 FPM	12	3.9 GPH					
G12	1455 LBS	25"x32"x12"	3	350 FPM	20	6.5 GPH					
G15	1465 LBS	25"x32"x12"	3	408 FPM	20	6.5 GPH					
G18	1800 LBS	30"x36"x12"	3	312 FPM	28	8.4 GPH					
G20	2935 LBS	38"x43"x12"	3	515 FPM	35	10.15 GPH					