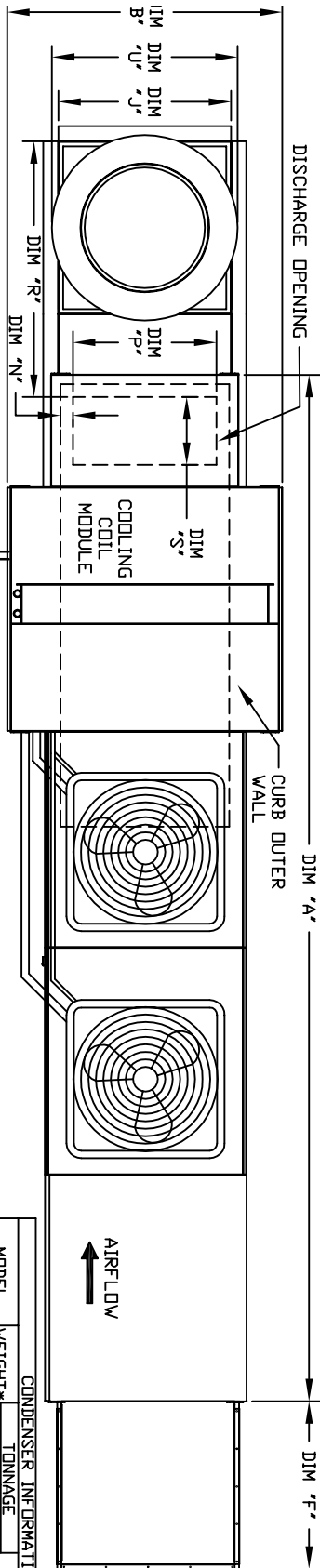
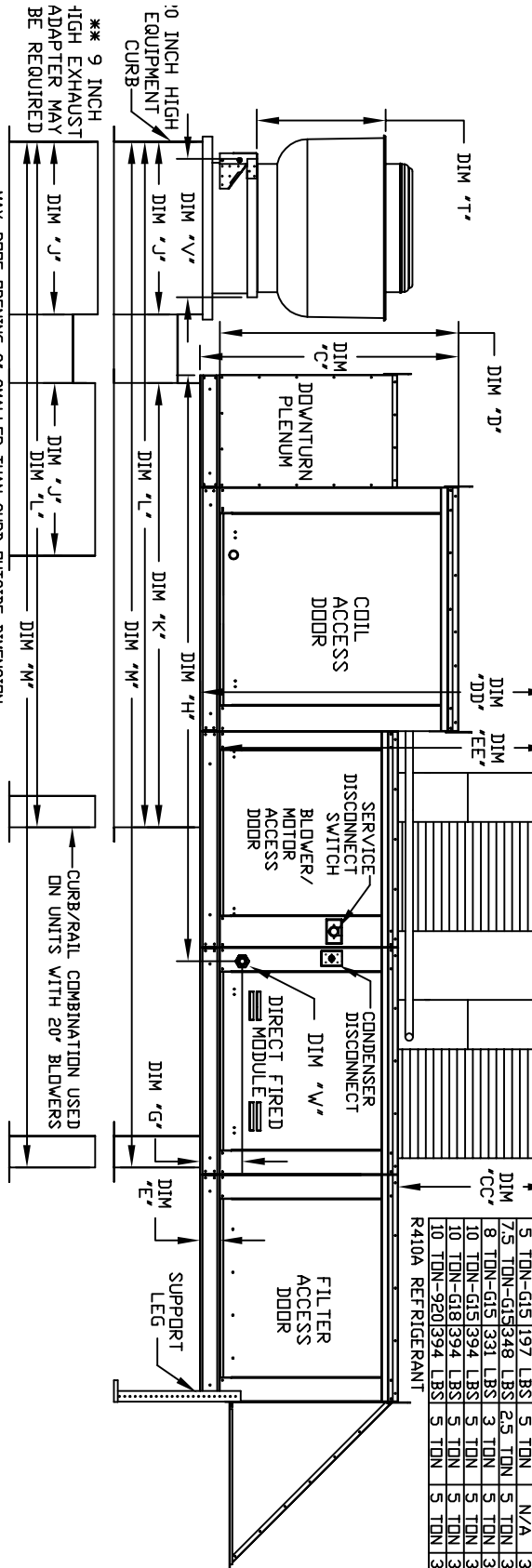


MODULAR OUTDOOR DOWN DISCHARGE DIRECT FIRED HEATER-ROOF TOP PACKAGE WITH COOLING, V-BANK AND SCREEN INTAKE

S1V B07 SAHCHDRTRP-440U
REV. A9 06/15/2015



1" NPT CONNECTION FOR SS PITCHED DRAIN PAN



CONDENSER INFORMATION

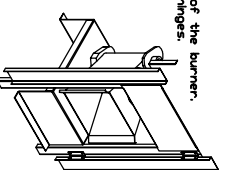
MODEL	WEIGHT*	#1 TONNAGE	#2 TONNAGE	CC	DD	EE
2 TON-G10	119 LBS	2 TON	N/A	26-5/16	56-1/16	52-3/8
3 TON-G10	134 LBS	3 TON	N/A	33-5/16	63-1/16	59-3/8
5 TON-G10	233 LBS	2 TON	3 TON	63-1/16	63-1/16	59-3/8
5 TON-G10	302 LBS	2.5 TON	2.5 TON	32-13/16	62-9/16	58-7/8
5 TON-G15	197 LBS	5 TON	N/A	32-13/16	69-9/16	65-7/8
7.5 TON-G15	348 LBS	2.5 TON	5 TON	32-13/16	69-9/16	65-7/8
8 TON-G15	331 LBS	3 TON	5 TON	33-5/16	71-11/16	68
10 TON-G18	394 LBS	5 TON	5 TON	32-13/16	69-9/16	65-7/8
10 TON-G18	394 LBS	5 TON	5 TON	32-13/16	76-3/16	70-7/8
10 TON-G20	394 LBS	5 TON	5 TON	32-13/16	97-3/16	91-15/16

R410A REFRIGERANT

EXHAUST UNIT DIMENSIONS

MODEL #	T	U	V	W
BU12	14-1/2	22	19	
BU11				
BU10	18-1/2	27-1/4	21	
BU09				
BU08				
BU07				
BU06	21-1/2	30-1/4	21	
BU05				
BU04				
BU03				
BU02	23-1/2	33-3/4	24-3/4	
BU01				
BU20	23-1/2	39-3/8	28	
BU12	29-1/2	38-7/8	28	
BU14	30-5/8	43-3/8	33	
BU30	33-1/2	52-3/4	40	

Impact Fired Profile Plate Specifications:
Impact fired burners shall have patented US Patent No. US6692823B2, self-adjusting profile plates designed to ensure proper air velocity and pressure drop across the burner. Profile plates shall allow burners to achieve clean combustion by limiting by-product levels to a maximum of 50ppm of carbon monoxide (CO), and 50ppm of nitrogen dioxide (NO2).
Applications:
Impact fired burner profile plates are engineered to automatically react to the momentum of a fresh air stream, without the need for any motors or actuators to mechanically adjust them. In this feature, all DF units are designed for demand control ventilation (DCV) requirements. All profile plate assemblies shall be included in the DF unit's ETL listing and comply with combined safety standards ANSI Z83.4 and CSA 3.7 (non-recirculating DF heaters) and ANSI Z83.18 (recirculating DF heaters).
General Construction:
Profile plates shall be formed from G90 galvanized steel. Profile plates shall vary in size per unit. Profile plates shall be mounted along the same plane as the discharge of the burner. Design shall incorporate proper torque, permanently mounted spring hinges. Spring hinges shall be made from plated steel.



UNIT DIMENSIONS

MODEL	WEIGHT#	A	B	C	D	E	F	G	H	I	J	K	L	M	N	P	R	S
D250-G10	110S LBS	16-1/4	39-3/8	42-3/4	39	3-3/4	22-3/8	7-13/16	95-7/16	21	71	106	166-5/8	3-9/16	13-7/8	36-13/16	11-1/2	
D500-G10	110 LBS	16-1/4	39-3/8	42-3/4	39	3-3/4	22-3/8	7-13/16	95-7/16	21	71	106	166-5/8	3-9/16	13-7/8	36-13/16	11-1/2	
D1250-G15	1490 LBS	18-1/4	49-3/8	47-3/4	44	3-3/4	30-5/16	7-13/16	109-7/16	31	79	124	190-5/8	4-5/16	22-3/8	46-9/16	18	
D1500-G15	1500 LBS	18-1/4	49-3/8	47-3/4	44	3-3/4	30-5/16	7-13/16	109-7/16	31	79	124	190-5/8	4-5/16	22-3/8	46-9/16	18	
D750-G18	1740 LBS	19-1/4	54-3/8	51-1/8	44	3-3/4	30-5/16	7-13/16	109-7/16	31	79	124	190-5/8	4-5/16	22-3/8	46-9/16	18	
D1000-G18	1745 LBS	19-1/4	54-3/8	51-1/8	44	3-3/4	30-5/16	7-13/16	109-7/16	31	79	124	190-5/8	4-5/16	22-3/8	46-9/16	18	
D1100-G18	192 LBS	19-1/4	54-3/8	51-1/8	44	3-3/4	30-5/16	7-13/16	109-7/16	31	79	124	190-5/8	4-5/16	22-3/8	46-9/16	18	
D1100-G18	192 LBS	19-1/4	54-3/8	51-1/8	44	3-3/4	30-5/16	7-13/16	109-7/16	31	79	124	190-5/8	4-5/16	22-3/8	46-9/16	18	
D1100-G18	192 LBS	19-1/4	54-3/8	51-1/8	44	3-3/4	30-5/16	7-13/16	109-7/16	31	79	124	190-5/8	4-5/16	22-3/8	46-9/16	18	
D1100-G18	192 LBS	19-1/4	54-3/8	51-1/8	44	3-3/4	30-5/16	7-13/16	109-7/16	31	79	124	190-5/8	4-5/16	22-3/8	46-9/16	18	
D1100-G18	192 LBS	19-1/4	54-3/8	51-1/8	44	3-3/4	30-5/16	7-13/16	109-7/16	31	79	124	190-5/8	4-5/16	22-3/8	46-9/16	18	
D1100-G18	192 LBS	19-1/4	54-3/8	51-1/8	44	3-3/4	30-5/16	7-13/16	109-7/16	31	79	124	190-5/8	4-5/16	22-3/8	46-9/16	18	
D1100-G18	192 LBS	19-1/4	54-3/8	51-1/8	44	3-3/4	30-5/16	7-13/16	109-7/16	31	79	124	190-5/8	4-5/16	22-3/8	46-9/16	18	
D1100-G18	192 LBS	19-1/4	54-3/8	51-1/8	44	3-3/4	30-5/16	7-13/16	109-7/16	31	79	124	190-5/8	4-5/16	22-3/8	46-9/16	18	
D1100-G18	192 LBS	19-1/4	54-3/8	51-1/8	44	3-3/4	30-5/16	7-13/16	109-7/16	31	79	124	190-5/8	4-5/16	22-3/8	46-9/16	18	
D1100-G18	192 LBS	19-1/4	54-3/8	51-1/8	44	3-3/4	30-5/16	7-13/16	109-7/16	31	79	124	190-5/8	4-5/16	22-3/8	46-9/16	18	
D1100-G18	192 LBS	19-1/4	54-3/8	51-1/8	44	3-3/4	30-5/16	7-13/16	109-7/16	31	79	124	190-5/8	4-5/16	22-3/8	46-9/16	18	
D1100-G18	192 LBS	19-1/4	54-3/8	51-1/8	44	3-3/4	30-5/16	7-13/16	109-7/16	31	79	124	190-5/8	4-5/16	22-3/8	46-9/16	18	
D1100-G18	192 LBS	19-1/4	54-3/8	51-1/8	44	3-3/4	30-5/16	7-13/16	109-7/16	31	79	124	190-5/8	4-5/16	22-3/8	46-9/16	18	
D1100-G18	192 LBS	19-1/4	54-3/8	51-1/8	44	3-3/4	30-5/16	7-13/16	109-7/16	31	79	124	190-5/8	4-5/16	22-3/8	46-9/16	18	
D1100-G18	192 LBS	19-1/4	54-3/8	51-1/8	44	3-3/4	30-5/16	7-13/16	109-7/16	31	79	124	190-5/8	4-5/16	22-3/8	46-9/16	18	
D1100-G18	192 LBS	19-1/4	54-3/8	51-1/8	44	3-3/4	30-5/16	7-13/16	109-7/16	31	79	124	190-5/8	4-5/16	22-3/8	46-9/16	18	
D1100-G18	192 LBS	19-1/4	54-3/8	51-1/8	44	3-3/4	30-5/16	7-13/16	109-7/16	31	79	124	190-5/8	4-5/16	22-3/8	46-9/16	18	
D1100-G18	192 LBS	19-1/4	54-3/8	51-1/8	44	3-3/4	30-5/16	7-13/16	109-7/16	31	79	124	190-5/8	4-5/16	22-3/8	46-9/16	18	
D1100-G18	192 LBS	19-1/4	54-3/8	51-1/8	44	3-3/4	30-5/16	7-13/16	109-7/16	31	79	124	190-5/8	4-5/16	22-3/8	46-9/16	18	
D1100-G18	192 LBS	19-1/4	54-3/8	51-1/8	44	3-3/4	30-5/16	7-13/16	109-7/16	31	79	124	190-5/8	4-5/16	22-3/8	46-9/16	18	
D1100-G18	192 LBS	19-1/4	54-3/8	51-1/8	44	3-3/4	30-5/16	7-13/16	109-7/16	31	79	124	190-5/8	4-5/16	22-3/8	46-9/16	18	
D1100-G18	192 LBS	19-1/4	54-3/8	51-1/8	44	3-3/4	30-5/16	7-13/16	109-7/16	31	79	124	190-5/8	4-5/16	22-3/8	46-9/16	18	
D1100-G18	192 LBS	19-1/4	54-3/8	51-1/8	44	3-3/4	30-5/16	7-13/16	109-7/16	31	79	124	190-5/8	4-5/16	22-3/8	46-9/16	18	
D1100-G18	192 LBS	19-1/4	54-3/8	51-1/8	44	3-3/4	30-5/16	7-13/16	109-7/16	31	79	124	190-5/8	4-5/16	22-3/8	46-9/16	18	
D1100-G18	192 LBS	19-1/4	54-3/8	51-1/8	44	3-3/4	30-5/16	7-13/16	109-7/16	31	79	124	190-5/8	4-5/16	22-3/8	46-9/16	18	
D1100-G18	192 LBS	19-1/4	54-3/8	51-1/8	44	3-3/4	30-5/16	7-13/16	109-7/16	31	79	124	190-5/8	4-5/16	22-3/8	46-9/16	18	
D1100-G18	192 LBS	19-1/4	54-3/8	51-1/8	44	3-3/4	30-5/16	7-13/16	109-7/16	31	79	124	190-5/8	4-5/16	22-3/8	46-9/16	18	
D1100-G18	192 LBS	19-1/4	54-3/8	51-1/8	44	3-3/4	30-5/16	7-13/16	109-7/16	31	79	124	190-5/8	4-5/16	22-3/8	46-9/16	18	
D1100-G18	192 LBS	19-1/4	54-3/8	51-1/8	44	3-3/4	30-5/16	7-13/16	109-7/16	31	79	124	190-5/8	4-5/16	22-3/8	46-9/16	18	
D1100-G18	192 LBS	19-1/4	54-3/8	51-1/8	44	3-3/4	30-5/16	7-13/16	109-7/16	31	79	124	190-5/8	4-5/16	22-3/8	46-9/16	18	
D1100-G18	192 LBS	19-1/4	54-3/8	51-1/8	44	3-3/4	30-5/16	7-13/16	109-7/16	31	79	124	190-5/8	4-5/16	22-3/8	46-9/16	18	
D1100-G18	192 LBS	19-1/4	54-3/8	51-1/8	44	3-3/4	30-5/16	7-13/16	109-7/16	31	79	124	190-5/8	4-5/16	22-3/8	46-9/16	18	
D1100-G18	192 LBS	19-1/4	54-3/8	51-1/8	44	3-3/4	30-5/16	7-13/16	109-7/16	31	79	124	190-5/8	4-5/16	22-3/8	46-9/16	18	
D1100-G18	192 LBS	19-1/4	54-3/8	51-1/8	44	3-3/4	30-5/16	7-13/16	109-7/16	31	79	124	190-5/8	4-5/16	22-3/8	46-9/16	18	
D1100-G18	192 LBS	19-1/4	54-3/8	51-1/8	44	3-3/4	30-5/16	7-13/16	109-7/16	31	79	124	190-5/8	4-5/16	22-3/8	46-9/16	18	
D1100-G18	192 LBS	19-1/4	54-3/8	51-1/8	44	3-3/4	30-5/16	7-13/16	109-7/16	31	79	124	190-5/8	4-5/16	22-3/8	46-9/16	18	
D1100-G18	192 LBS	19-1/4	54-3/8	51-1/8	44	3-3/4	30-5/16	7-13/16	109-7/16	31	79	124	190-5/8	4-5/16	22-3/8	46-9/16	18	
D1100-G18	192 LBS	19-1/4	54-3/8	51-1/8	44	3-3/4	30-5/16</											