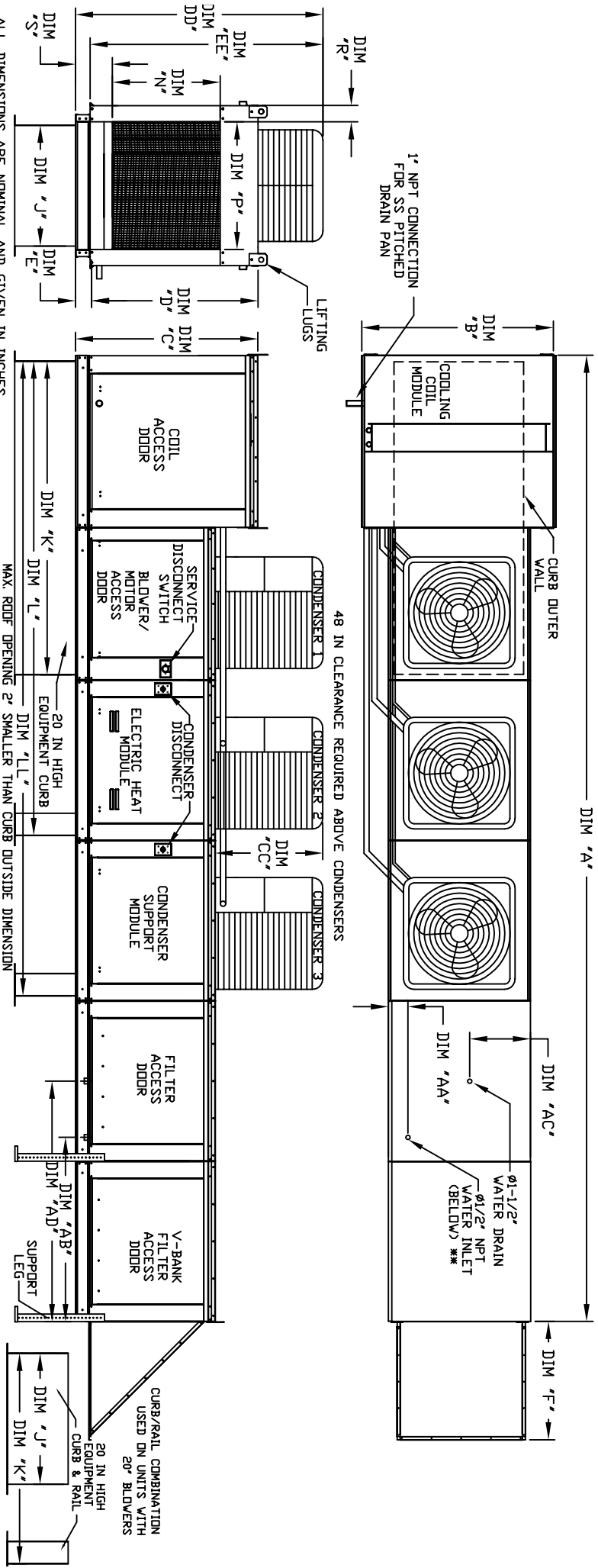


MODULAR OUTDOOR SIDE DISCHARGE ELECTRIC HEATER PACKAGED UNIT WITH COOLING, EVAPORATIVE COOLER INTAKE, V-BANK AND SCREEN INTAKE

STVEBCE3SMHC-RH-15  
REV#2 06/15/2015



ALL DIMENSIONS ARE NOMINAL AND GIVEN IN INCHES.

MODEL		UNIT DIMENSIONS		CURB/RAIL		DISCHARGE OPENING		WATER INLET DRAIN OPENING		FILTER SIZE & QTY		MAX. FILTER VELOCITY								
A	B	C	D	E	F	J	K	L	LL	N	P	R	S	AA	AB	AC	AD	AE		
E3-G18	248-3/8	54-3/8	56-3/8	51-1/8	5-1/4	34-3/16	35	84	126-1/4	168-1/2	29-5/8	30	11-1/2	7-3/8	4-1/2	244	20	57-1/4	20"x25"x2" (8)	88000 CFM = 348 FPM
E4-920	297-7/8	60-7/16	64-3/8	59-1/8	5-1/4	47-1/4	42	115-3/16	169-1/2	223-13/16	36-3/4	34	12-1/2	7-3/8	4-1/2	241-1/8	23-1/2	52-7/8	16"x20"x2" (5)	130000 CFM = 495 FPM

MAX. ROOF OPENING 2' SMALLER THAN CURB OUTSIDE DIMENSION

20 IN HIGH EQUIPMENT CURB

20 IN HIGH EQUIPMENT CURB & RAIL

CURB/RAIL COMBINATION USED ON UNITS WITH 20' BLOWERS

UNIT INFORMATION

MODEL	TONNAGE RANGE	MIN	MAX	TOT. WEIGHT	MEDIA SIZE & QTY	VEL. @ MAX CFM	NOZZLES	MAX. FLOW RATE
E3-G18	15 Ton	15 Ton	15 Ton	1855 LBS	20"x25"x2" (8)	348 FPM	14	7 GPH
E4-920	15 Ton	15 Ton	15 Ton	2905 LBS	16"x20"x2" (5)	572 FPM	24	12 GPH

STANDARD EVAPORATIVE COOLING UNIT

MODEL	WEIGHT#	#1	#2	#3	CC	DD	EE
15 TON-G18	591 LBS	5 TON	5 TON	5 TON	32-13/16	76-3/16	70-7/8
15 TON-920	591 LBS	5 TON	5 TON	5 TON	32-13/16	97-3/16	91-15/16

CONDENSER INFORMATION

MODEL	WEIGHT#	#1	#2	#3	CC	DD	EE
15 TON-G18	591 LBS	5 TON	5 TON	5 TON	32-13/16	76-3/16	70-7/8
15 TON-920	591 LBS	5 TON	5 TON	5 TON	32-13/16	97-3/16	91-15/16

CELDK EVAPORATIVE COOLING UNIT

MODEL	WEIGHT#	#1	#2	#3	CC	DD	EE
15 TON-G18	591 LBS	5 TON	5 TON	5 TON	32-13/16	76-3/16	70-7/8
15 TON-920	591 LBS	5 TON	5 TON	5 TON	32-13/16	97-3/16	91-15/16

\*ADD CONDENSING UNIT WEIGHT TO WEIGHT IN TABLE ABOVE

\*\* MAX EVAP WATER PRESSURE = 50 PSI @ 70 DEG F