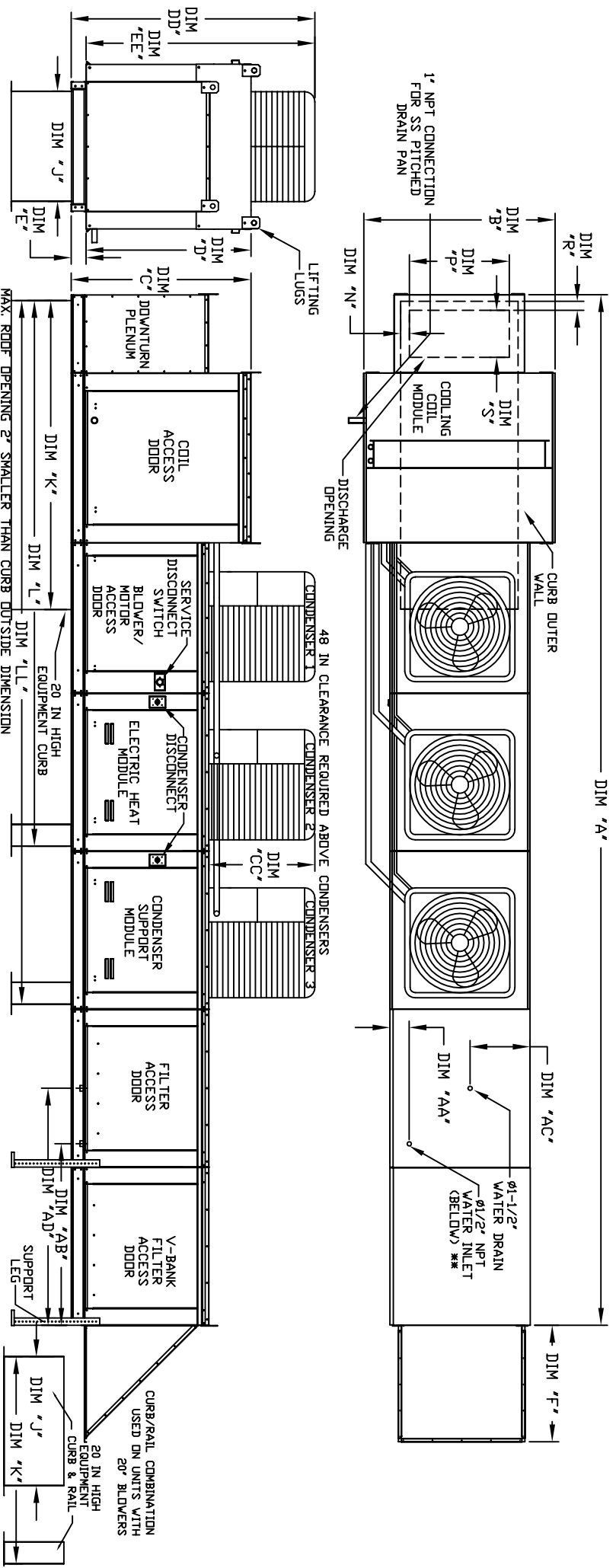


MODULAR OUTDOOR DOWN DISCHARGE ELECTRIC HEATER PACKAGED UNIT WITH COOLING, EVAPORATIVE COOLER INTAKE, V-BANK AND SCREEN INTAKE

STANDARD MODEL 48-40-15
REV. A/E 08/15/2010



ALL DIMENSIONS ARE NOMINAL AND GIVEN IN INCHES.

MODEL	A	B	C	D	E	F	J	K	L	LL	N	P	R	S	AA	AB	AC	AD	AE
E3-G18	27-2-3/4	54-3-8	56-3-8	51-1-8	5-1/4	51-5/8	35	84	150-5/8	192-7/8	8-7/8	22-3/8	3	18	4-1/2	44	20	57-1/4	20"x25"x2" (8)
E4-920	388-1/4	60-7/16	64-3/8	59-1/8	5-1/4	76-3/8	42	115-3/16	199-13/16	254-1/8	7-7/8	31-1/2	3-1/4	23-1/2	41-1/2	41-1/8	23-1/2	52-7/8	16"x20"x2" (15)

UNIT INFORMATION:

MODEL	TONNAGE RANGE	TOT. WEIGHT	MEDIA SIZE & QTY	VEL. @ MAX CFM	NOZZLES	MAX. FLOW RATE
E3-G18	15 Ton	15 Ton	1995 LBS	20"x25"x2" (8)	348 FPM	7 GPH
E4-920	15 Ton	15 Ton	3095 LBS	16"x20"x2" (15)	572 FPM	12 GPH

STANDARD EVAPORATIVE COOLING UNIT:

MODEL	TONNAGE RANGE	TOT. WEIGHT	MEDIA SIZE & QTY	VEL. @ MAX CFM	NOZZLES	MAX. FLOW RATE
E3-G18	15 Ton	15 Ton	1995 LBS	20"x25"x2" (8)	348 FPM	7 GPH
E4-920	15 Ton	15 Ton	3095 LBS	16"x20"x2" (15)	572 FPM	12 GPH

CELDEK EVAPORATIVE COOLING UNIT:

MODEL	TONNAGE RANGE	TOT. WEIGHT	MEDIA SIZE & QTY	VEL. @ MAX CFM	NOZZLES	MAX. FLOW RATE
E3-G18	15 Ton	15 Ton	1985 LBS	30"x36"x12"	1067 FPM	28
E4-920	15 Ton	15 Ton	3065 LBS	38"x43"x12"	1322 FPM	35

CONDENSER INFORMATION:

MODEL	WEIGHT*	#1	#2	#3	CC	DD	EE
15 TON-G18/1591	5 TON	5 TON	5 TON	5 TON	32-13/16	76-3/16	70-7/8
15 TON-920/1591	5 TON	5 TON	5 TON	5 TON	32-13/16	97-3/16	91-15/16

*MAX EVAP WATER PRESSURE = 50 PSI @ 70 DEG F