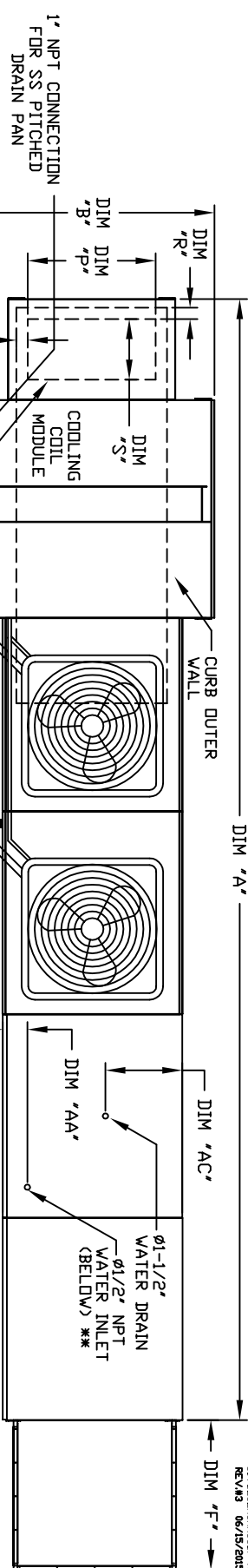


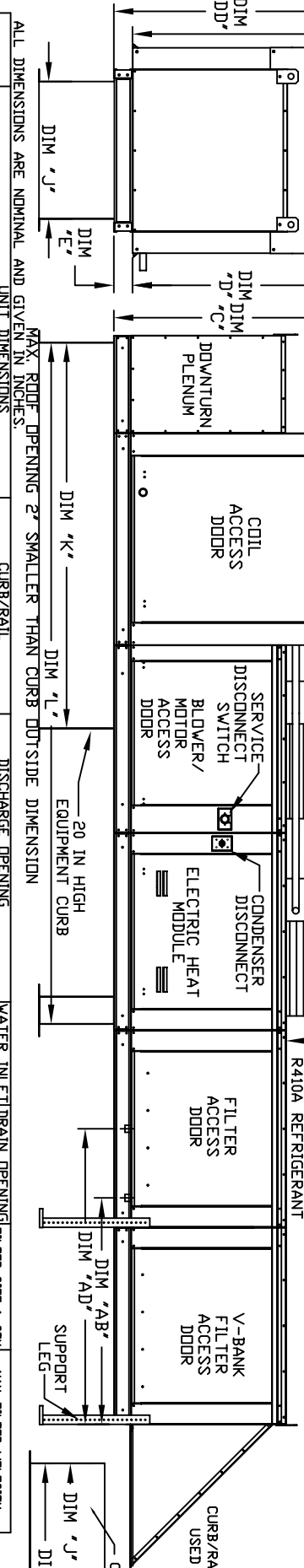
MODULAR OUTDOOR DOWN DISCHARGE ELECTRIC HEATER PACKAGED UNIT WITH COOLING, EVAPORATIVE COOLER INTAKE, V-BANK AND SCREEN INTAKE



CONDENSER INFORMATION

MODEL	WEIGHT*	#1 TONNAGE	#2 TONNAGE	CC	DD	EE
2 TON-G10	119 LBS	2 TON	N/A	26-5/16	56-1/16	52-3/8
3 TON-G10	134 LBS	3 TON	N/A	33-5/16	63-1/16	59-3/8
5 TON-G10	253 LBS	2 TON	3 TON	33-5/16	63-1/16	59-3/8
5 TON-G10	302 LBS	2.5 TON	2.5 TON	32-13/16	62-9/16	58-7/8
5 TON-G15	197 LBS	5 TON	N/A	32-13/16	62-9/16	58-7/8
5 TON-G15	348 LBS	2.5 TON	5 TON	32-13/16	62-9/16	58-7/8
8 TON-G15	331 LBS	3 TON	5 TON	33-5/16	71-1/16	68
10 TON-G18	394 LBS	5 TON	5 TON	32-13/16	69-9/16	65-7/8
10 TON-G18	394 LBS	5 TON	5 TON	32-13/16	76-3/16	70-7/8
10 TON-G20	394 LBS	5 TON	5 TON	32-13/16	97-3/16	91-15/16

R410A REFRIGERANT



ALL DIMENSIONS ARE NOMINAL AND GIVEN IN INCHES.

MAX. ROOF OPENING 2\"/>

20 IN HIGH EQUIPMENT CURB

20 IN HIGH EQUIPMENT CURB & RAIL

20 IN HIGH EQUIPMENT CURB & RAIL USED ON UNITS WITH 20\"/>

UNIT INFORMATION

MODEL	A	B	C	D	E	F	J	K	L	N	P	R	S	AA	AB	AC	AD	MAX. FILTER VELOCITY
E1-G10	199-1/2	39-3/8	42-3/4	39	3-3/4	22-3/8	21	71	131-5/8	6-1/8	13-7/8	3-1/4	11-1/2	4-1/2	138-1/2	13	48-1/4	3650 CFM = 418 FPM
E2-G15	213-1/2	49-3/8	47-3/4	44	3-3/4	30-5/16	31	79	145-5/8	6-7/8	22-3/8	3	18	4-1/2	188-1/2	18	48-1/4	6500 CFM = 464 FPM
E3-G18	230-1/2	54-3/8	56-3/8	51-1/8	5-1/4	34-3/16	35	84	150-5/8	8-7/8	22-3/8	3	18	4-1/2	214	20	57-1/4	8000 CFM = 348 FPM
E4-G20	273-15/16	60-7/16	64-3/8	59-1/8	5-1/4	41-1/4	42	115-3/16	199-1/8	7-7/8	31-1/2	3	23-1/2	4-1/2	241-1/8	23-1/2	16x20x2\"/>	

STANDARD EVAPORATIVE COOLING UNIT

MODEL	TONNAGE RANGE	TOT. WEIGHT	MEDIA SIZE & QTY	VEL. @ MAX. CFM (NOZZLES)	MAX. FLOW RATE
E1-G10	2 Ton	1190 LBS	20"x25"x2\"/>		

GELDEK EVAPORATIVE COOLING UNIT

MODEL	TONNAGE RANGE	TOT. WEIGHT	MEDIA SIZE & QTY	VEL. @ MAX. CFM (NOZZLES)	MAX. FLOW RATE
E1-G10	2 Ton	1195 LBS	20"x24"x12\"/>		

WATER INLET DRAIN OPENING

MODEL	WATER INLET DRAIN OPENING	FILTER SIZE & QTY	MAX. FILTER VELOCITY
E1-G10	2\"/>		