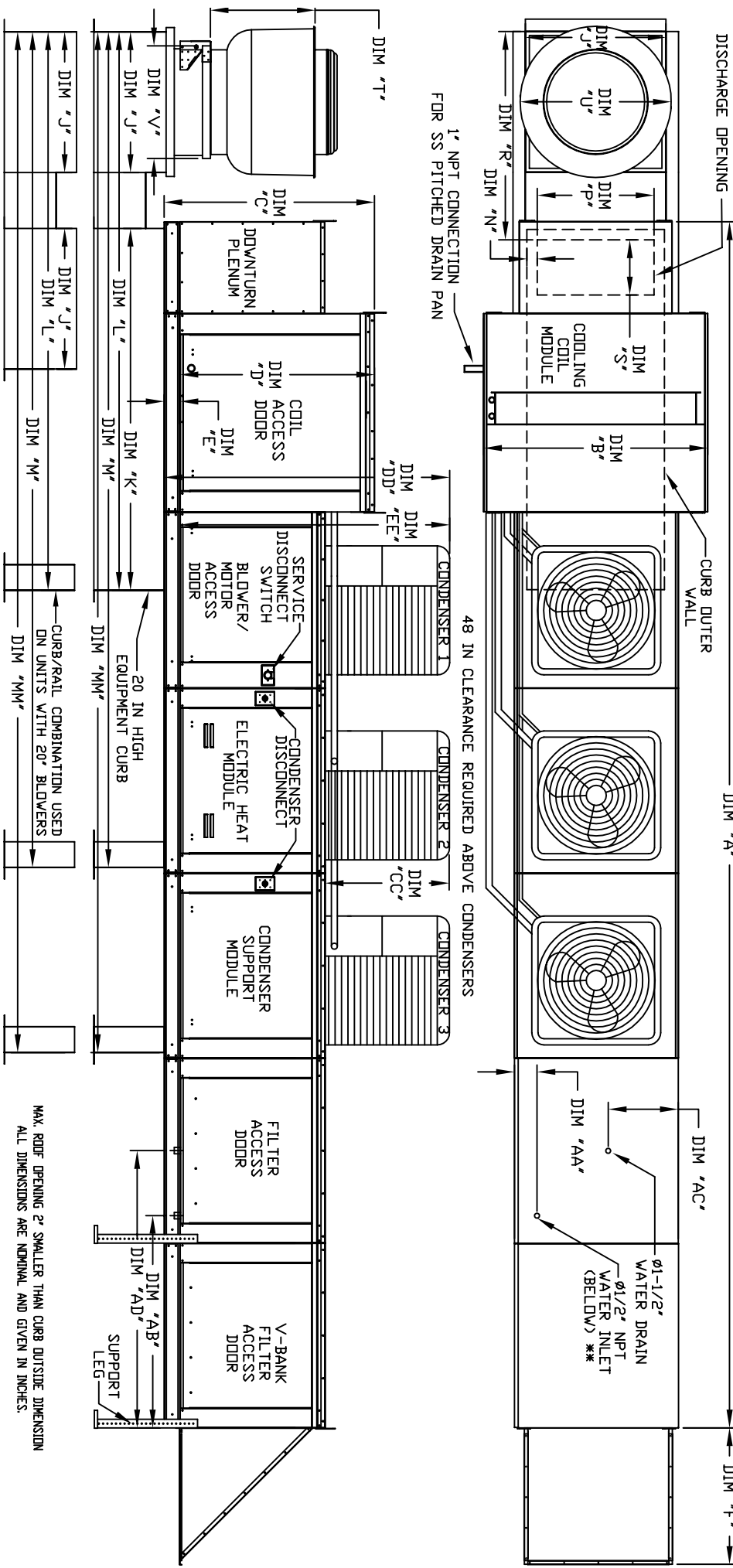


MODULAR OUTDOOR DOWN DISCHARGE ELECTRIC HEATER-ROOF TOP PACKAGE WITH COOLING, EVAPORATIVE COOLER INTAKE, V-BANK AND SCREEN INTAKE

SYR/ECHEACC0PRTF-4PL-15
REV#2 06/15/2015



EXHAUST UNIT DIMENSIONS

MODEL #	T	U	V	W
DU12	14-1/2	22	19	
DU11	18-1/2	27-1/4	21	
DU10	21-1/2	30-1/4	21	
DU9	23	33-3/4	24-3/4	
DU8	23-1/2	39-3/8	28	
DU120	29-1/2	38-7/8	28	
DU124	30-5/8	43-3/8	33	
DU130	33-1/2	52-3/4	40	

UNIT DIMENSIONS

MODEL	A	B	C	D	E	F	G	H	I	J	K	L	M	N	O	P	Q	R	S	T	
E3-618	27-2/4	54-3/8	56-3/8	51-1/8	5-1/4	34-3/16	35	84	133	199-5/8	241-7/8	6-5/16	22-3/8	49-1/2	18	4-1/2	44	20	57-1/4	20*25*2 (8)	8800 CFM = 348 FPM
E4-920	328-1/4	60-7/16	64-3/8	59-1/8	5-1/4	47-1/4	42	115-3/16	171-3/16	255-7/8	30-3/16	5-1/4	31-1/2	56-13/16	123-1/2	4-1/2	41-1/8	23-1/2	16*20*2 (15)	81300 CFM = 495 FPM	

UNIT INFORMATION

MODEL	MIN	MAX	TOT. WEIGHT	MEDIA SIZE & QTY	VEL. @ MAX. CFM	INDUZZLES	MAX. FLOW RATE
E3-618	15 ton	15 ton	1999 LBS	20"x20"x2 (8)	348 FPM	14	7 GPH
E4-920	15 ton	15 ton	3095 LBS	16"x20"x2 (15)	572 FPM	24	12 GPH

CONDENSER INFORMATION

MODEL	WEIGHT*	#1	#2	#3	CC	DD	EE
15 TON-G181591	5 TON	5 TON	5 TON	5 TON	32-13/16	76-3/16	70-7/8
15 TON-G181591	5 TON	5 TON	5 TON	5 TON	32-13/16	76-3/16	70-7/8

STANDARD EVAPORATIVE COOLING UNIT

MODEL	MIN	MAX	TOT. WEIGHT	MEDIA SIZE & QTY	VEL. @ MAX. CFM	INDUZZLES	MAX. FLOW RATE
E3-618	15 ton	15 ton	1999 LBS	20"x20"x2 (8)	348 FPM	14	7 GPH
E4-920	15 ton	15 ton	3095 LBS	16"x20"x2 (15)	572 FPM	24	12 GPH

CELEB EVAPORATIVE COOLING UNIT

MODEL	MIN	MAX	TOT. WEIGHT	MEDIA SIZE & QTY	VEL. @ MAX. CFM	INDUZZLES	MAX. FLOW RATE
E3-618	15 ton	15 ton	1985 LBS	30"x36"x12	1067 FPM	28	8.4 GPH
E4-920	15 ton	15 ton	3065 LBS	38"x43"x12	1322 FPM	35	10.15 GPH

MAX. ROOF OPENING 2" SMALLER THAN CURB OUTSIDE DIMENSION
ALL DIMENSIONS ARE NOMINAL AND GIVEN IN INCHES.

***9 INCH HIGH EXHAUST ADAPTER MAY BE REQUIRED