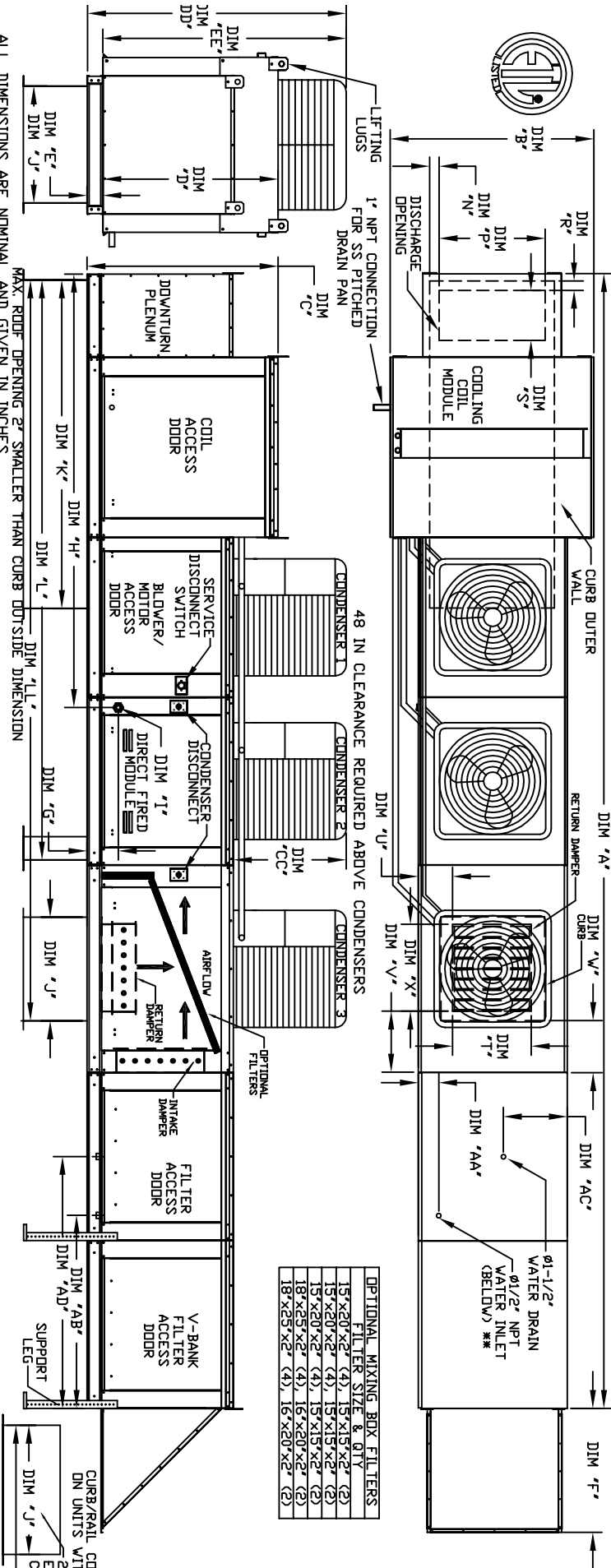


MODULAR OUTDOOR DOWN DISCHARGE DIRECT FIRED RECIRCULATING HEATER WITH COOLING, EVAPORATIVE COOLER INTAKE, V-BANK AND SCREEN INTAKE

STV/ECB/MS/AC/CP-490-15
REV 06/15/2015



OPTIONAL MIXING BOX FILTERS

FILTER SIZE & QTY	(1)	(2)	(3)	(4)
15'x20'x2" (4)	15'	15'	15'	15'
15'x20'x2" (4)	15'	15'	15'	15'
15'x20'x2" (4)	15'	15'	15'	15'
15'x20'x2" (4)	15'	15'	15'	15'
15'x20'x2" (4)	15'	15'	15'	15'
15'x20'x2" (4)	15'	15'	15'	15'
15'x20'x2" (4)	15'	15'	15'	15'
15'x20'x2" (4)	15'	15'	15'	15'

ALL DIMENSIONS ARE NOMINAL AND GIVEN IN INCHES.

UNIT DIMENSIONS

MODEL	A	B	C	D	E	F	G	H	J	K	L	N	P	R	S	T	U	V	X	AA	AB	AC	AD
D.500-G18	272-3/4	54-3/8	56-3/8	51-1/8	5-1/4	34-3/16	9-1/2	114-7/16	35	84	150-5/8	130-1/16	6-5/16	22-3/8	1-1/2	18	8	7	30	4-1/2	44	20	57-1/4
D.750-G18	272-3/4	54-3/8	56-3/8	51-1/8	5-1/4	34-3/16	9-1/2	114-7/16	35	84	150-5/8	130-1/16	6-5/16	22-3/8	1-1/2	18	8	7	30	4-1/2	44	20	57-1/4
D.1000-G18	272-3/4	54-3/8	56-3/8	51-1/8	5-1/4	34-3/16	9-1/2	114-7/16	35	84	150-5/8	130-1/16	6-5/16	22-3/8	1-1/2	18	8	7	30	4-1/2	44	20	57-1/4
D.1000-920	328-1/4	60-7/16	64-3/8	59-1/8	5-1/4	47-1/4	13-9/16	151	42	115-3/16	199-7/8	247-7/8	5-1/4	31-1/2	23-1/2	10	11	36	4-1/2	41-1/8	23-1/2	52-7/8	
D.1500-920	328-1/4	60-7/16	64-3/8	59-1/8	5-1/4	47-1/4	13-9/16	151	42	115-3/16	199-7/8	247-7/8	5-1/4	31-1/2	23-1/2	10	11	36	4-1/2	41-1/8	23-1/2	52-7/8	

UNIT INFORMATION

MODEL	BURNER BTU RANGE (MBH)	GAS PRESSURE (PSI)	GAS CONNECTION	TONNAGE RANGE	STANDARD EVAPORATIVE COOLING UNIT	CELEDEK EVAPORATIVE COOLING UNIT	
	LENGTH	BTU LOW	BTU HIGH	MIN	MAX	MIN	MAX
D.500-G18	12"	350	7" VC 14" WC	15 Ton	2660 LBS	20"x25"x2" (8)	348 FPM
D.750-G18	18"	525	7" VC 14" WC	15 Ton	2665 LBS	20"x25"x2" (8)	348 FPM
D.1000-G18	24"	800	7" VC 14" WC	15 Ton	2670 LBS	20"x25"x2" (8)	348 FPM
D.1000-920	24"	1100	7" VC 14" WC	15 Ton	3535 LBS	16"x20"x2" (15)	572 FPM
D.1500-920	30"	1375	7" VC 15" WC	15 Ton	3550 LBS	16"x20"x2" (15)	572 FPM

CONDENSER INFORMATION

MODEL	WEIGHT #1	TONNAGE #2	CC #3	DD	EE
15 TON-G18	591 LBS	5 TON	32-13/16	76-3/16	70-7/8
15 TON-920	591 LBS	5 TON	32-13/16	97-3/16	91-15/16

R410A REFRIGERANT

CONDENSER INFORMATION

MODEL	WEIGHT #1	TONNAGE #2	CC #3	DD	EE
15 TON-G18	591 LBS	5 TON	32-13/16	76-3/16	70-7/8
15 TON-920	591 LBS	5 TON	32-13/16	97-3/16	91-15/16

R410A REFRIGERANT

CONDENSER INFORMATION

MODEL	WEIGHT #1	TONNAGE #2	CC #3	DD	EE
15 TON-G18	591 LBS	5 TON	32-13/16	76-3/16	70-7/8
15 TON-920	591 LBS	5 TON	32-13/16	97-3/16	91-15/16

R410A REFRIGERANT

CONDENSER INFORMATION

MODEL	WEIGHT #1	TONNAGE #2	CC #3	DD	EE
15 TON-G18	591 LBS	5 TON	32-13/16	76-3/16	70-7/8
15 TON-920	591 LBS	5 TON	32-13/16	97-3/16	91-15/16

R410A REFRIGERANT

CONDENSER INFORMATION

MODEL	WEIGHT #1	TONNAGE #2	CC #3	DD	EE
15 TON-G18	591 LBS	5 TON	32-13/16	76-3/16	70-7/8
15 TON-920	591 LBS	5 TON	32-13/16	97-3/16	91-15/16

R410A REFRIGERANT

CONDENSER INFORMATION

MODEL	WEIGHT #1	TONNAGE #2	CC #3	DD	EE
15 TON-G18	591 LBS	5 TON	32-13/16	76-3/16	70-7/8
15 TON-920	591 LBS	5 TON	32-13/16	97-3/16	91-15/16

R410A REFRIGERANT

CONDENSER INFORMATION

MODEL	WEIGHT #1	TONNAGE #2	CC #3	DD	EE
15 TON-G18	591 LBS	5 TON	32-13/16	76-3/16	70-7/8
15 TON-920	591 LBS	5 TON	32-13/16	97-3/16	91-15/16

R410A REFRIGERANT

CONDENSER INFORMATION

MODEL	WEIGHT #1	TONNAGE #2	CC #3	DD	EE
15 TON-G18	591 LBS	5 TON	32-13/16	76-3/16	70-7/8
15 TON-920	591 LBS	5 TON	32-13/16	97-3/16	91-15/16

R410A REFRIGERANT

CONDENSER INFORMATION

MODEL	WEIGHT #1	TONNAGE #2	CC #3	DD	EE
15 TON-G18	591 LBS	5 TON	32-13/16	76-3/16	70-7/8
15 TON-920	591 LBS	5 TON	32-13/16	97-3/16	91-15/16

R410A REFRIGERANT

CONDENSER INFORMATION

MODEL	WEIGHT #1	TONNAGE #2	CC #3	DD	EE
15 TON-G18	591 LBS	5 TON	32-13/16	76-3/16	70-7/8
15 TON-920	591 LBS	5 TON	32-13/16	97-3/16	91-15/16

R410A REFRIGERANT

CONDENSER INFORMATION

MODEL	WEIGHT #1	TONNAGE #2	CC #3	DD	EE
15 TON-G18	591 LBS	5 TON	32-13/16	76-3/16	70-7/8
15 TON-920	591 LBS	5 TON	32-13/16	97-3/16	91-15/16

R410A REFRIGERANT

CONDENSER INFORMATION

MODEL	WEIGHT #1	TONNAGE #2	CC #3	DD	EE
15 TON-G18	591 LBS	5 TON	32-13/16	76-3/16	70-7/8
15 TON-920	591 LBS	5 TON	32-13/16	97-3/16	91-15/16

R410A REFRIGERANT

CONDENSER INFORMATION

MODEL	WEIGHT #1	TONNAGE #2	CC #3	DD	EE
15 TON-G18	591 LBS	5 TON	32-13/16	76-3/16	70-7/8
15 TON-920	591 LBS	5 TON	32-13/16	97-3/16	91-15/16

R410A REFRIGERANT

CONDENSER INFORMATION

MODEL	WEIGHT #1	TONNAGE #2	CC #3	DD	EE
15 TON-G18	591 LBS	5 TON	32-13/16	76-3/16	70-7/8
15 TON-920	591 LBS	5 TON	32-13/16	97-3/16	91-15/16

R410A REFRIGERANT

CONDENSER INFORMATION

MODEL	WEIGHT #1	TONNAGE #2	CC #3	DD	EE
15 TON-G18	591 LBS	5 TON	32-13/16	76-3/16	70-7/8
15 TON-920	591 LBS	5 TON	32-13/16	97-3/16	91-15/16

R410A REFRIGERANT

CONDENSER INFORMATION

MODEL	WEIGHT #1	TONNAGE #2	CC #3	DD	EE
15 TON-G18	591 LBS	5 TON	32-13/16	76-3/16	70-7/8
15 TON-920	591 LBS	5 TON	32-13/16	97-3/16	91-15/16

R410A REFRIGERANT

CONDENSER INFORMATION

MODEL	WEIGHT #1	TONNAGE #2	CC #3	DD	EE
15 TON-G18	591 LBS	5 TON	32-13/16	76-3/16	70-7/8
15 TON-920	591 LBS	5 TON	32-13/16	97-3/16	91-15/16

R410A REFRIGERANT

CONDENSER INFORMATION

MODEL	WEIGHT #1	TONNAGE #2	CC #3	DD	EE
15 TON-G18	591 LBS	5 TON	32-13/16	76-3/16	70-7/8
15 TON-920	591 LBS	5 TON	32-13/16	97-3/16	91-15/16

R410A REFRIGERANT

CONDENSER INFORMATION

MODEL	WEIGHT #1	TONNAGE #2	CC #3	DD	EE
15 TON-G18	591 LBS	5 TON	32-13/16	76-3/16	70-7/8
15 TON-920	591 LBS	5 TON	32-13/16	97-3/16	91-15/16

R410A REFRIGERANT

CONDENSER INFORMATION

MODEL	WEIGHT #1	TONNAGE #2	CC #3	DD	EE
15 TON-G18	591 LBS	5 TON	32-13/16	76-3/16	70-7/8
15 TON-920	591 LBS	5 TON	32-13/16	97-3/16	91-15/16

R410A REFRIGERANT

CONDENSER INFORMATION

MODEL	WEIGHT #1	TONNAGE #2	CC #3	DD	EE
15 TON-G18	591 LBS	5 TON	32-13/16	76-3/16	70-7/8
15 TON-920	591 LBS	5 TON	32-13/16	97-3/16	91-15/16

R410A REFRIGERANT

CONDENSER INFORMATION

MODEL	WEIGHT #1	TONNAGE #2	CC #3	DD	EE
15 TON-G18	591 LBS	5 TON	32-13/16	76-3/16	70-7/8
15 TON-920	591 LBS	5 TON	32-13/16	97-3/16	91-15/16

R410A REFRIGERANT

CONDENSER INFORMATION

MODEL	WEIGHT #1	TONNAGE #2	CC #3	DD	EE
15 TON-G18	591 LBS	5 TON	32-13/16	76-3/16	70-7/8
15 TON-920	591 LBS	5 TON	32-13/16	97-3/16	91-15/16

R410A REFRIGERANT

CONDENSER INFORMATION

MODEL	WEIGHT #1	TONNAGE #2	CC #3	DD	EE
15 TON-G18	591 LBS	5 TON	32-13/16	76-3/16	70-7/8
15 TON-920	591 LBS	5 TON	32-13/16	97-3/16	91-15/16

R410A REFRIGERANT

CONDENSER INFORMATION

MODEL	WEIGHT #1	TONNAGE #2	CC #3	DD	EE
15 TON-G18	591 LBS	5 TON	32-13/16	76-3/16	70-7/8
15 TON-920	591 LBS	5 TON	32-13/16	97-3/16	91-15/16

R410A REFRIGERANT

CONDENSER INFORMATION

MODEL	WEIGHT #1	TONNAGE #2	CC #3	DD	EE
15 TON-G18	591 LBS	5 TON	32-13/16	76-3/16	70-7/8
15 TON-920	591 LBS	5 TON	32-13/16	97-3/16	91-15/16

R410A REFRIGERANT

CONDENSER INFORMATION

MODEL	WEIGHT #1	TONNAGE #2	CC #3	DD	EE
15 TON-G18	591 LBS	5 TON	32-13/16	76-3/16	70-7/8
15 TON-920	591 LBS	5 TON	32-13/16	97-3/16	91-15/16

R410A REFRIGERANT

CONDENSER INFORMATION

MODEL	WEIGHT #1	TONNAGE #2	CC #3	DD	EE
15 TON-G18	591 LBS	5 TON	32-13/16	76-3/16	70-7/8
15 TON-920	591 LBS	5 TON	32-13/16	97-3/16	91-15/16

R410A REFRIGERANT

CONDENSER INFORMATION

MODEL	WEIGHT #1	TONNAGE #2	CC #3	DD	EE
15 TON-G18	591 LBS	5 TON	32-13/16	76-3/16	70-7/8
15 TON-920	591 LBS	5 TON	32-13/16	97-3/16	91-15/16

R410A REFRIGERANT

CONDENSER INFORMATION

MODEL	WEIGHT #1	TONNAGE #2	CC #3	DD	EE
15 TON-G18	591 LBS	5 TON	32-13/16	76-3/16	70-7/8
15 TON-920	591 LBS	5 TON	32-13/16	97-3/16	91-15/16

R410A REFRIGERANT

CONDENSER INFORMATION

MODEL	WEIGHT #1	TONNAGE #2	CC #3	DD	EE
15 TON-G18	591 LBS	5 TON	32-13/16	76-3/16	70-7/8
15 TON-920	591 LBS	5 TON	32-13/16	97-3/16	91-15/16

R410A REFRIGERANT

CONDENSER INFORMATION

MODEL	WEIGHT #1	TONNAGE #2	CC #3	DD	EE
15 TON-G18	591 LBS	5 TON	32-13/16	76-3/16	70-7/8
15 TON-920	591 LBS	5 TON	32-13/16	97-3/16	91-15/16

R410A REFRIGERANT

CONDENSER INFORMATION

MODEL	WEIGHT #1	TONNAGE #2	CC #3	DD	EE
15 TON-G18	591 LBS	5 TON	32-13/16	76-3/16	70-7/8
15 TON-920	591 LBS	5 TON	32-13/16	97-3/16	91-15/16

R410A REFRIGERANT

CONDENSER INFORMATION

MODEL	WEIGHT #1	TONNAGE #2	CC #3	DD	EE
15 TON-G18	591 LBS	5 TON	32-13/16	76-3/16	70-7/8
15 TON-920	591 LBS	5 TON	32-13/16	97-3/16	91-15/16

R410A REFRIGERANT

CONDENSER INFORMATION

MODEL	WEIGHT #1	TONNAGE #2	CC #3	DD	EE
-------	-----------	------------	-------	----	----